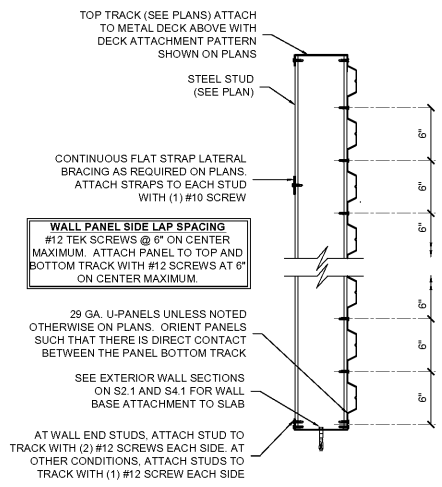
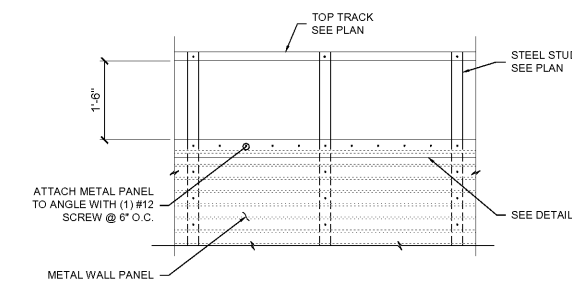


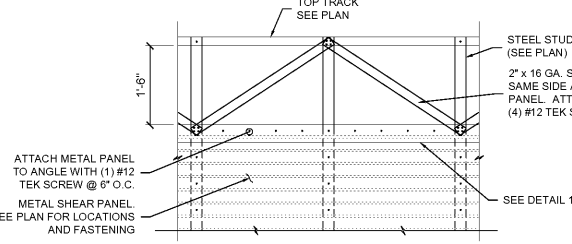
DETAIL 1 OF WALL PANEL FASTENING PATTERN AT INTERIOR WALL
SCALE: 1/2" = 1'-0" SS.1



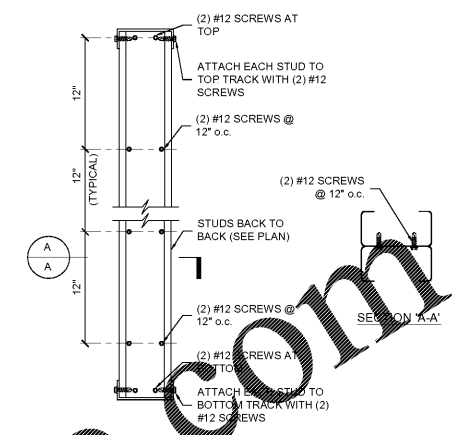
DETAIL 2 OF WALL PANEL FASTENING PATTERN AT EXTERIOR SHEAR WALL
SCALE: 1/2" = 1'-0" SS.1



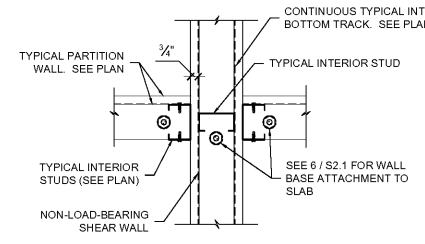
DETAIL 3A OF SHEAR WALL CONSTRUCTION
SCALE: 1/2" = 1'-0" SS.1



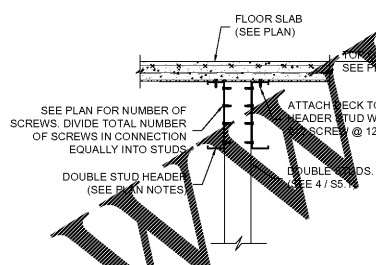
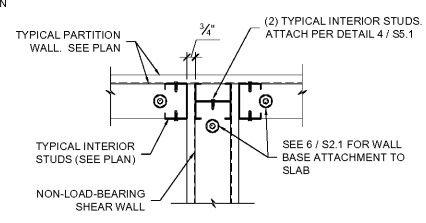
DETAIL 3B OF SHEAR WALL PANEL WITH STRAP BRACING
SCALE: 1/2" = 1'-0" SS.1



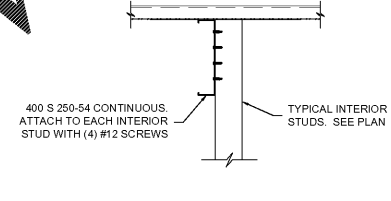
DETAIL 4 OF BACK TO BACK STUDS
SCALE: NONE SS.1



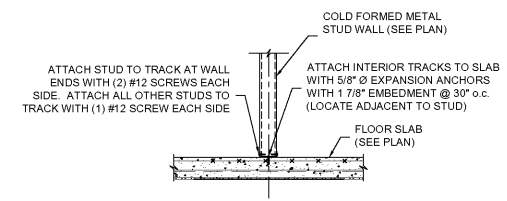
PLAN DETAIL 5 OF NON-LOAD-BEARING SHEAR WALL INTERSECTION WITH LOAD-BEARING WALL
SCALE: 1/2" = 1'-0" SS.1



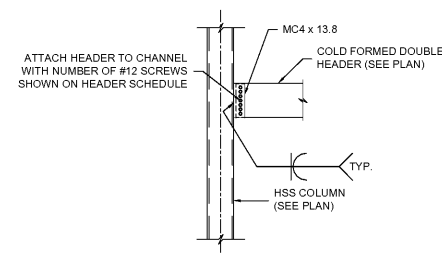
SECTION 6 THRU DOUBLE HEADER
SCALE: 1/2" = 1'-0" SS.1



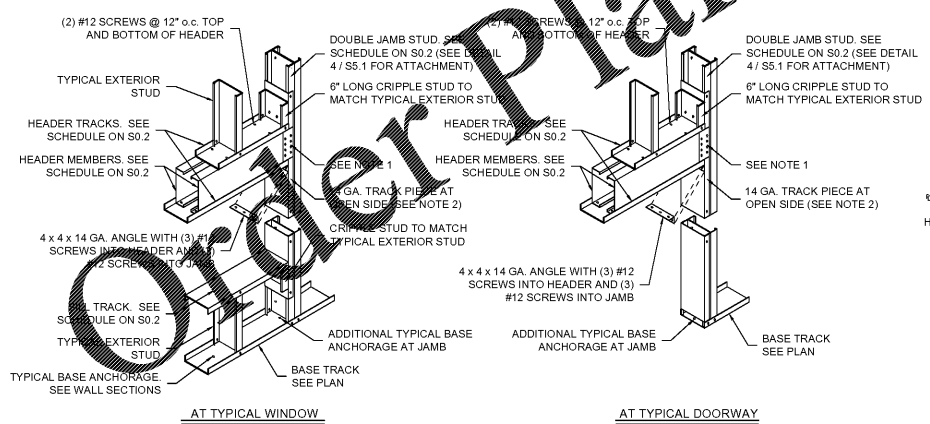
SECTION 7 THRU TYPICAL ROOF DECK SUPPORT MEMBER
SCALE: 1/2" = 1'-0" SS.1



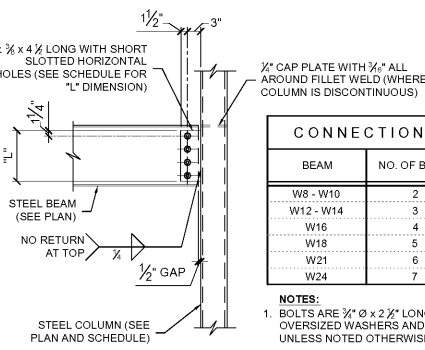
DETAIL 8 OF TYPICAL TRACK TO ELEVATED SLAB CONNECTION AT TYPICAL INTERIOR STUDS
SCALE: 1/2" = 1'-0" SS.1



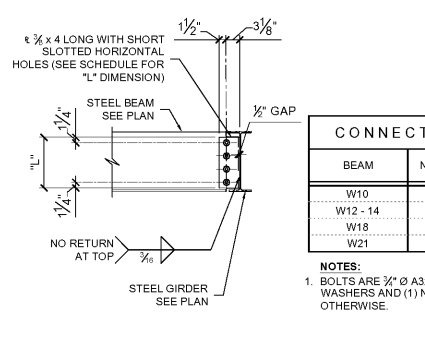
DETAIL 12 OF HEADER TO COLUMN CONNECTION
SCALE: 3/4" = 1'-0" SS.1



DETAIL 9 OF EXTERIOR HEADER CONNECTION
SCALE: NONE SS.1



DETAIL 10 OF SINGLE PLATE CONNECTION AT COLUMN
SCALE: NONE SS.1



DETAIL 11 OF SINGLE PLATE CONNECTION AT BEAM
SCALE: NONE SS.1

BEAM	NO. OF BOLTS	LENGTH ("L")
W8 - W10	2	5 1/2"
W12 - W14	3	8 1/2"
W16	4	11 1/2"
W18	5	14 1/2"
W21	6	17 1/2"
W24	7	20 1/2"

NOTES:
1. BOLTS ARE 3/4" Ø x 2 1/2" LONG A325 BOLTS WITH (2) OVERSIZED WASHERS AND (1) NUT. TYPICAL UNLESS NOTED OTHERWISE.

BEAM	NO. OF BOLTS	LENGTH ("L")
W10	2	5 1/2"
W12 - 14	3	8 1/2"
W18	5	14 1/2"
W21	6	17 1/2"

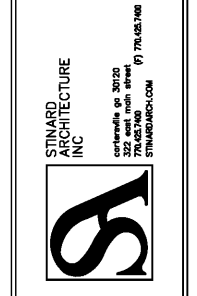
NOTES:
1. BOLTS ARE 3/4" Ø A325 BOLTS WITH (2) OVERSIZED WASHERS AND (1) NUT. TYPICAL UNLESS NOTED OTHERWISE.

- NOTES:**
1. 6" WIDE, 14 GAGE GUSSET PLATE TO MATCH DEPTH OF HEADER MEMBERS. ATTACH USING NUMBER OF #12 SCREWS SHOWN ON SCHEDULE ON S0.2 (SPLIT NUMBER OF SCREWS EVENLY BETWEEN HEADER MEMBERS AND JAMB)
2. TRACK PIECE TO BE CONTINUOUS FOR HEIGHT OF OPENING AND EXTEND 8" ABOVE TOP OF HEADER MEMBERS. WHERE SILL TRACK IS REQUIRED, TRACK PIECE TO EXTEND 8" BELOW SILL TRACK.
3. # INDICATES #12 SCREW, UNLESS NOTED OTHERWISE.

WWW.LDILine.com

Order Plans @

Life Storage #354
2020 South College St
Auburn, AL 36832



ISSUE FOR CONSTRUCTION REVISIONS:

PROJECT NUMBER: 201839
DATE: 03-15-2019

SHEET NUMBER: S5.1

bennett&piess
Experience Structural Expertise
Atlanta, Boca Raton, Charlotte, Chattanooga, Orlando
1964 - 2019 Celebrating 55 Years of Structural Excellence
47 Perimeter Center East, Suite 500
Atlanta, Georgia 30346
Tel. 678.990.8700 Fax. 678.990.8701
Copyright 2019 - Bennett & Pless, Inc.
All Rights Reserved
B & P Job Number 18168