

THESE DRAWINGS AND DESIGNS ARE THE PROPERTY OF STINARD ARCHITECTURE, INC. AND SHALL NOT BE REPRODUCED OR TRANSMITTED IN ANY FORM OR BY ANY MEANS, ELECTRONIC OR MECHANICAL, INCLUDING PHOTOCOPYING, RECORDING, OR BY ANY INFORMATION STORAGE AND RETRIEVAL SYSTEM, WITHOUT THE WRITTEN PERMISSION OF STINARD ARCHITECTURE, INC. THESE DRAWINGS ARE PREPARED FOR USE ON THIS SPECIFIC PROJECT AND ARE NOT SUITABLE FOR USE ON ANY OTHER PROJECT. ALL DIMENSIONS MUST BE VERIFIED BY THE CONTRACTOR AND DISCREPANCIES BEFORE PROCEEDING WITH CONSTRUCTION. DO NOT SCALE DRAWINGS.

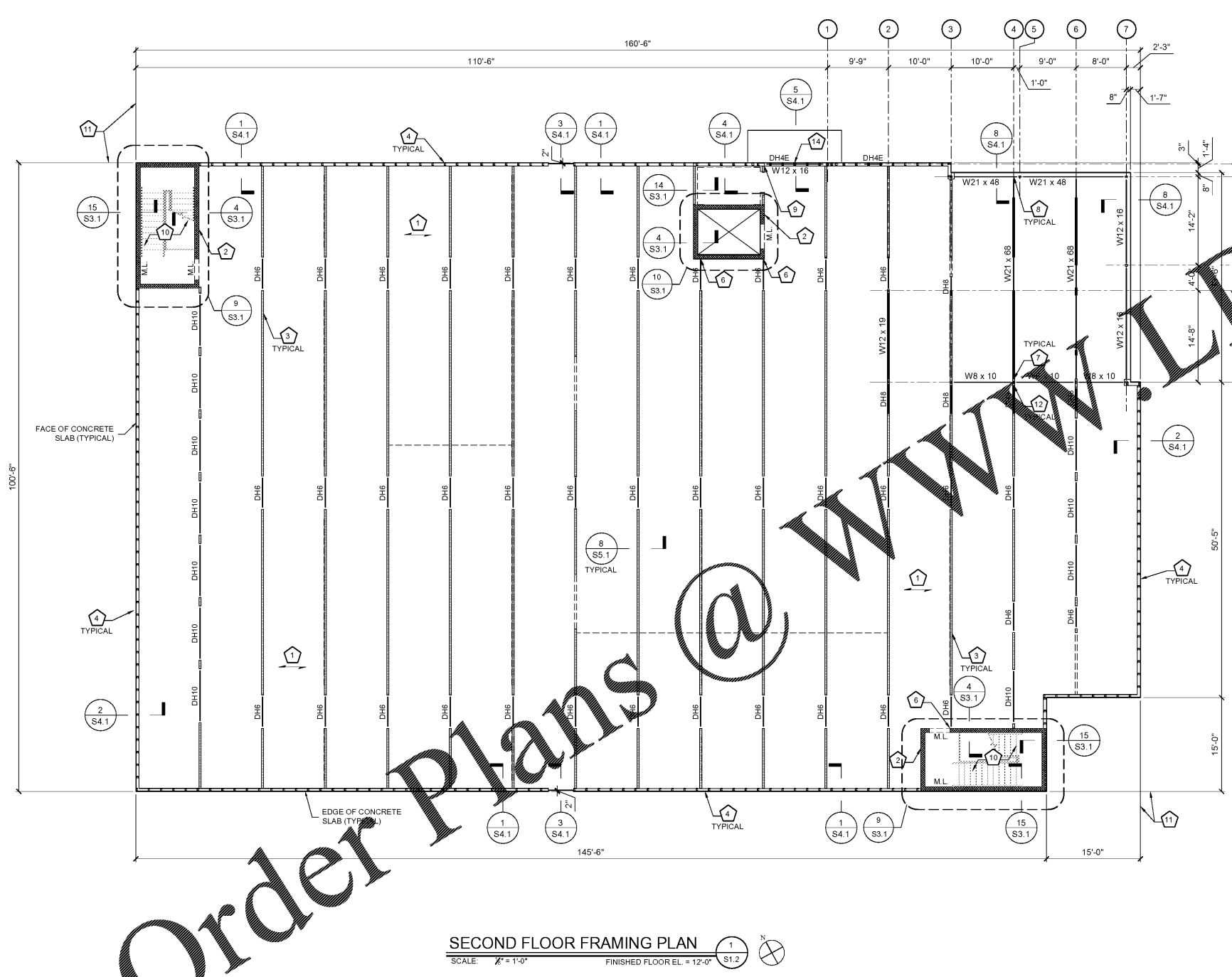
Life Storage #354
 2020 South College St
 Auburn, AL 36832

STINARD ARCHITECTURE INC.
 2020 South College St, Auburn, AL 36832
 (205) 827-1100
 stinard@stinc.com
 stinardinc.com

ISSUE FOR CONSTRUCTION REVISIONS:

PROJECT NUMBER: 201839
 DATE: 03-15-2019

SHEET NUMBER: **S1.2**



SECOND FLOOR FRAMING PLAN LEGEND:

- ① INDICATES NOTE REFERRAL. SEE CORRESPONDING PLAN NOTE.
- [Hatched Box] INDICATES 4" INTERIOR STUD WALLS. SEE NOTE 1.
- [Dashed Box] INDICATES 6" EXTERIOR STUD WALLS. SEE NOTE 4.
- [Cross-hatched Box] INDICATES CMU WALLS. SEE NOTE 1.
- M.L. INDICATES MASONRY LINTEL OVER WALL OPENING BELOW. SEE SCHEDULE ON SHEET S3.1.
- D.H. INDICATES HEADER OVER WALL OPENING BELOW. SEE HEADER SCHEDULE ON SHEET S0.2.
- [Dotted Box] INDICATES INTERIOR WALLS BELOW.
- [Wavy Box] INDICATES SPAN OF FLOOR SLAB SYSTEM. SEE NOTE 1.

- SECOND FLOOR FRAMING PLAN NOTES:**
- FLOOR SLAB SYSTEM:
 - A. SLAB: 2 1/2" NORMAL WEIGHT CONCRETE.
 - B. DECK: 2" - 18 GAGE COMPOSITE STEEL DECK (TOTAL SLAB DEPTH = 4 1/2").
 - C. REINFORCEMENT: 6 x 6 - W1.4 x W1.4 WELDED WIRE REINFORCEMENT LOCATED 1 1/2" BELOW TOP OF SLAB.
 - D. ATTACHMENT TO SUPPORTS: #12 SCREWS IN 36 / 4 FASTENER PATTERN.
 - E. SIDE LAP CONNECTION: (3) #10 SCREWS PER SPAN.
 - F. PERIMETER CONNECTION: #12 SCREWS @ 12" ON CENTER.
 - G. INSTALLATION CONFIGURATION: TWO SPAN MINIMUM.
 - 8" MASONRY WALLS:
 - A. WALL: 8" CMU.
 - B. WALL REINFORCEMENT: #5 @ 32" ON CENTER.
 - C. REINFORCEMENT POSITION: CENTER IN MASONRY UNIT CELL IN EACH DIRECTION, UNLESS NOTED OTHERWISE ON THE DRAWINGS.
 - D. HORIZONTAL REINFORCEMENT: #9 WIRE LADDER TYPE @ 16" ON CENTER.
 - E. SEE DETAILS ON SHEET S3.1 FOR ADDITIONAL REINFORCEMENT REQUIREMENTS.
 - 4" INTERIOR COLD FORMED STEEL WALLS:
 - A. STUDS: 400 S 250 - 54 STUDS @ 5'-0" ON CENTER IN 400 T 200 - 54 BOTTOM TRACK.
 - B. SHEATHING: 29 GAGE U-PANELS ONE SIDE UNLESS NOTED OTHERWISE. SEE SHEAR WALL SCHEDULE FOR U-PANEL SECTION PROPERTIES.
 - C. SEE DETAILS 1 / S5.1 AND 3A / S5.1 FOR TYPICAL INTERIOR WALL CONSTRUCTION.
 - D. HAT CHANNEL BRACING: INSTALL CONTINUOUS 20 GA. HAT CHANNELS ON OPPOSITE SIDE OF STUDS AT THIRD-POINTS OF SPAN. SEE 1 / S5.1 FOR HAT CHANNEL SECTION PROPERTIES.
 - 6" EXTERIOR COLD FORMED STEEL WALLS:
 - A. STUDS: 600 S 250 - 54 STUDS @ 2'-0" ON CENTER IN 600 T 250 - 68 TOP TRACK AND 600 T 200-54 BOTTOM TRACK.
 - B. SHEATHING: SHEATH INTERIOR FACE WITH WITH 29 GAGE U-PANELS. SEE SHEAR WALL SCHEDULE FOR U-PANEL SECTION PROPERTIES.
 - C. SEE DETAIL 2 / S5.1 FOR TYPICAL EXTERIOR WALL CONSTRUCTION.
 - D. FLAT STRAP BRACING: INSTALL 2" x 18 GA. FLAT STRAP ON EXTERIOR FACE OF STUDS AT MID-POINT OF SPAN.
 - DOUBLE STUDS UNDER ALL DOUBLE STUDS FROM LEVEL ABOVE. SEE DETAIL 4 / S5.1 FOR BACK TO BACK FASTENING REQUIRES OF DOUBLE STUDS.
 - SEE DETAIL 12 / S3.1 FOR HEADER CONNECTION TO MASONRY WALL.
 - SEE DETAIL 10 / S5.1 FOR STEEL BEAM TO STEEL COLUMN CONNECTION.
 - SEE DETAIL 11 / S5.1 FOR STEEL BEAM TO STEEL BEAM CONNECTION.
 - SEE DETAIL 13 / S3.1 FOR STEEL BEAM CONNECTION TO MASONRY WALL.
 - STAIR DESIGN BY SPECIALTY ENGINEER. PROVIDE FULLY GROUTED CELLS AT ALL STAIR HANDRAIL LOCATIONS.
 - ALL EXTERIOR DIMENSIONS ARE TO THE NOMINAL FACE OF CMU OR SLAB.
 - SEE DETAIL 12 / S5.1 FOR HEADER ATTACHMENT TO STEEL COLUMN.
 - SEE ARCHITECTURAL DRAWINGS FOR INTERIOR WALLS, DOOR, DOOR SIZES AND LOCATIONS.
 - SEE ARCHITECTURAL DRAWINGS FOR CANOPY SUPPORT COLUMN LOCATIONS.

Order Plans @ WWW.DIline.com

SECOND FLOOR FRAMING PLAN ① S1.2
 SCALE: 1/4" = 1'-0" FINISHED FLOOR EL. = 12'-0"