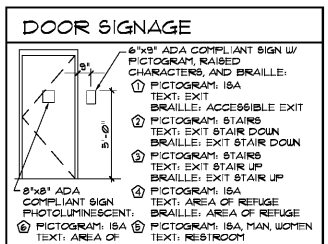
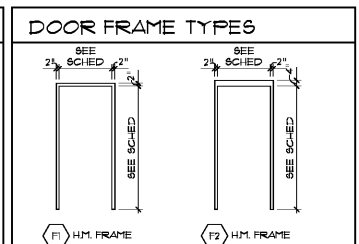
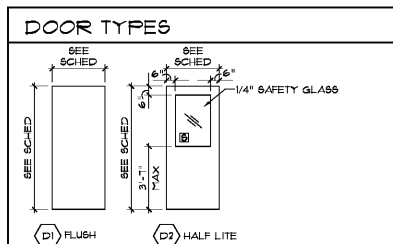


DOOR SCHEDULE

DOOR		DIMENSIONS			FRAME			DETAILS			LABEL	HARDWARE	REMARKS			
NO.	DESCRIPTION	TYPE	WIDTH	HEIGHT	THICK	MATERIAL	FINISH	TYPE	MATERIAL	FINISH				HEAD	JAMB	SILL
1ST FLOOR																
101A	SALES (EXT)	W1	3'-0"	7'-0"	1-3/4"	ALUM	PREFIN	W1	ALUM	PREFIN	1/AB1	---	1/AB1	---	HARDWARE BY DOOR MFR	
101B	SALES	D2	3'-0"	7'-0"	1-3/4"	HM	FNT	F1	HM	FNT	H-1	J-1	---	---	H-1, L-3, C-2, DS-1, S-1, KP-1	
102A	BREAK	D1	3'-0"	7'-0"	1-3/4"	HM	FNT	F1	HM	FNT	H-1	J-1	---	---	H-1, L-3, C-1, DS-1, S-1, KP-1	
103A	UTILITY	D1	3'-0"	7'-0"	1-3/4"	HM	FNT	F1	HM	FNT	H-1	J-1	---	---	H-1, L-4, C-2, DS-1, S-1	
104A	TOILET	D1	3'-0"	7'-0"	1-3/4"	HM	FNT	F1	HM	FNT	H-1	J-1	---	---	H-1, L-2, C-1, DS-1, S-1, KP-1	SIGN (S)
105A	TOILET	D1	3'-0"	7'-0"	1-3/4"	HM	FNT	F1	HM	FNT	H-1	J-1	---	---	H-1, L-2, C-1, DS-1, S-1, KP-1	SIGN (S)
106A	ELECTRICAL	D1	3'-0"	7'-0"	1-3/4"	HM	FNT	F1	HM	FNT	H-1	J-1	---	---	H-1, L-2, C-1, DS-1, S-1, KP-1	
107A	SPRINKLER (EXT)	D1	3'-0"	7'-0"	1-3/4"	INSUL HM	FNT	F2	HM	FNT	H-3	J-3	S-1	---	H-2, L-4, C-3, T-1, US-1	
108A	LOADING (EXT)	W3	5'-0"	7'-3"	1-3/4"	ALUM	PREFIN	W3	ALUM	PREFIN	5/A52	---	5/A52	---	HARDWARE BY DOOR MFR	AUTO SLIDING DOOR-COORD W/ ELEC
109A	ELEVATOR EQUIP	D1	3'-0"	7'-0"	1-3/4"	HM	FNT	F2	HM	FNT	H-2	J-2	---	1 HR	H-1, L-4, C-2, DS-1, US-2	
110A	STAIR 1	D1	3'-0"	7'-0"	1-3/4"	HM	FNT	F2	HM	FNT	H-2	J-2	---	---	H-1, L-1, C-1, DS-1, US-2	SIGN (S)
110B	STAIR 1 (EXT)	D1	3'-0"	7'-0"	1-3/4"	INSUL HM	FNT	F2	HM	FNT	H-5	J-5	S-1	---	H-2, L-4, C-3, T-1, US-1	SIGN (S)
111A	STAIR 2	D1	3'-0"	7'-0"	1-3/4"	HM	FNT	F2	HM	FNT	H-2	J-2	---	1 HR	H-1, L-1, C-1, DS-1, US-2	SIGN (S)
111B	STAIR 2 (EXT)	D1	3'-0"	7'-0"	1-3/4"	INSUL HM	FNT	F2	HM	FNT	H-4	J-4	S-1	---	H-2, L-4, C-3, T-1, US-1	SIGN (S)
2ND FLOOR																
202A	STAIR 1	D1	3'-0"	7'-0"	1-3/4"	HM	FNT	F2	HM	FNT	H-2	J-2	---	1 HR	H-1, L-1, C-1, DS-1, US-2	SIGN (S)
203A	STAIR 2	D1	3'-0"	7'-0"	1-3/4"	HM	FNT	F2	HM	FNT	H-2	J-2	---	1 HR	H-1, L-1, C-1, DS-1, US-2	SIGN (S)

HARDWARE LEGEND - INDICATED MANUFACTURERS ARE BASIS OF DESIGN

H-1	HAGER BB179 HINGE 1-1/2 FR 4-1/2x4-1/2	652 (26D)	C-1	LCN 4030, HINGE SIDE MTD, SNB	ALUM	T-1	NGP BUFFER SEAL THRESHOLD 8965	ALUM
H-2	HAGER BB181 NRP HINGE 1-1/2 FR 4-1/2x4-1/2	630 (32D)	C-2	LCN 4030 EDA, PARALLEL ARM, SNB	ALUM	T-2	THRESHOLD BY DOOR MFR	ALUM
H-3	OFFSET PIVOTS BY DOOR MFR	AND	C-3	LCN 4040XP SCUSH, PARALLEL ARM, SNB	ALUM	US-1	NGP 1005A WEATHERSTRIPPING, C621A SWEEP	ALUM
L-1	SCHLAGE PASSAGE LOCK AL100-SAT	626	C-4	SURFACE CLOSER W/ BACK-CHECK AND HOLD	AND	US-2	NGP 8050C HEAD AND JAMB SMOKE SEAL	BLACK
L-2	SCHLAGE PRIVACY LOCK AL400-SAT	626				US-3	WEATHERSTRIPPING AND BOTTOM SWEEP BY DOOR MFR	BLACK
L-3	SCHLAGE CLASSROOM LOCK AL100D-SAT	626	DS-1	HAGER 234U WALL MTD DOOR STOP	652 (26D)	S-1	SILENCERS: HAGER 50TD	GRAY
L-4	SCHLAGE STOREROOM LOCK AL80D-SAT	626	DS-2	HAGER 1200 CONCEALED HOLD OPEN	630 (32D)	KP-1	HAGER KICK PLATE 1845, 12" HGT	630 (32D)
L-5	PULL, PUSHBAR, DEADLOCK AND THUMBTURN BY DOOR MFR	AND						

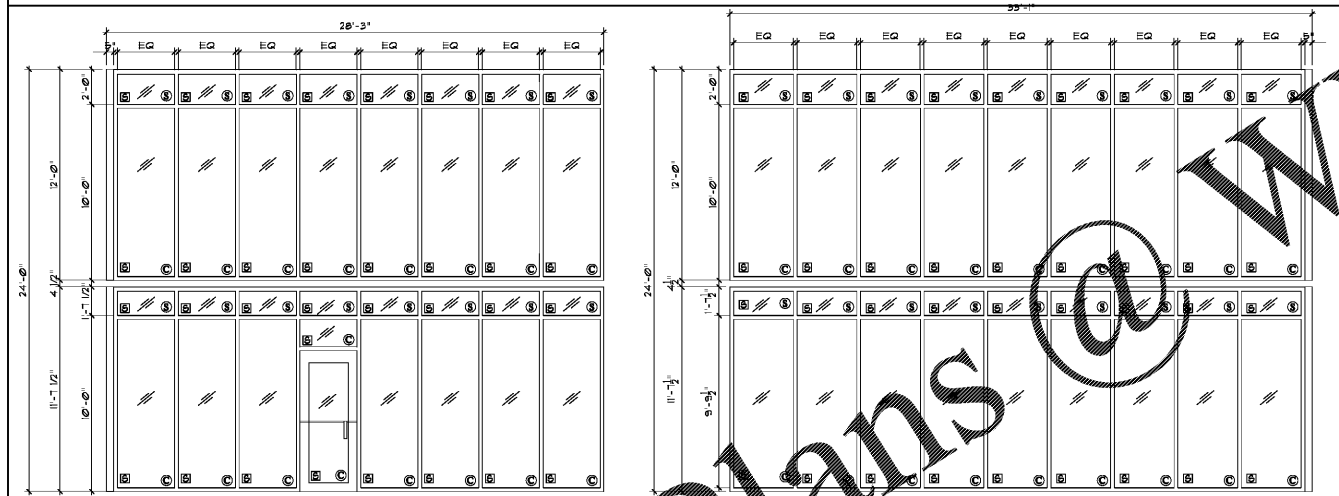


STORAGE UNIT DOORS

TYPE	DIMENSION	DESCRIPTION
A	8'-0"W x 7'-0"H	ROLL-UP
B	3'-0"W x 7'-0"H	ROLL-UP
C	8'-0"W x 7'-0"H	ROLL-UP
D	3'-0"W x 7'-0"H	ROLL-UP
E	7'-0"W x 7'-0"H	ROLL-UP
F	3'-0"W x 7'-0"H	FAUX
G	3'-0"W x 7'-0"H	SUING
H	8'-0"W x 7'-0"H	ADA MOTORIZED

NOTE: L STORAGE UNIT DOORS PROVIDED BY STORAGE UNIT SYSTEM MANUFACTURER

WINDOW TYPES



W1 ALUM ENTRANCE SYSTEM
 (C) DESIGN BASIS: TYCK YHS 50 FI FRAMING, 1" INSUL, LOW-E CLEAR SAFETY GLASS
 (S) DESIGN BASIS: KALNEER TRIFAB VG 45IT FRAMING, 1" INSUL SPANDREL SAFETY GLASS

W2 AL ENTRANCE SYSTEM
 (C) DESIGN BASIS: TYCK YHS 50 FI FRAMING, 1" INSUL, LOW-E CLEAR SAFETY GLASS
 (S) DESIGN BASIS: KALNEER TRIFAB VG 45IT FRAMING, 1" INSUL SPANDREL SAFETY GLASS

W3 AL ENTRANCE SYSTEM
 (C) DESIGN BASIS: TYCK YHS 50 FI FRAMING, 1" INSUL, LOW-E CLEAR SAFETY GLASS
 (S) DESIGN BASIS: KALNEER TRIFAB VG 45IT FRAMING, 1" INSUL SPANDREL SAFETY GLASS

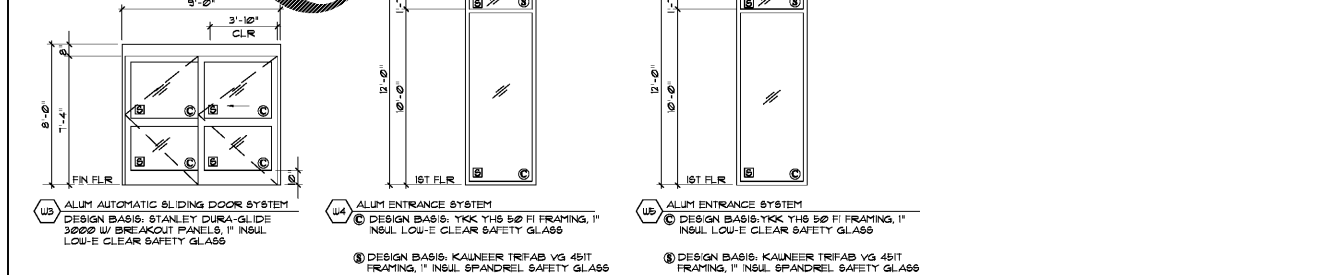
W4 ALUM ENTRANCE SYSTEM
 (C) DESIGN BASIS: TYCK YHS 50 FI FRAMING, 1" INSUL, LOW-E CLEAR SAFETY GLASS
 (S) DESIGN BASIS: KALNEER TRIFAB VG 45IT FRAMING, 1" INSUL SPANDREL SAFETY GLASS

W5 ALUM ENTRANCE SYSTEM
 (C) DESIGN BASIS: TYCK YHS 50 FI FRAMING, 1" INSUL, LOW-E CLEAR SAFETY GLASS
 (S) DESIGN BASIS: KALNEER TRIFAB VG 45IT FRAMING, 1" INSUL SPANDREL SAFETY GLASS

W6 ALUM AUTOMATIC SLIDING DOOR SYSTEM
 DESIGN BASIS: STANLEY DURA-GLIDE 3000P W/ BREAKOUT PANELS, 1" INSUL, LOW-E CLEAR SAFETY GLASS

Order Plans @

DOOR AND WINDOW NOTES:
 1. FIELD VERIFY ALL ROUGH OPENING DIMENSIONS.
 2. ON WINDOW AND DOOR TYPES INDICATED SAFETY GLASS LOCATIONS. PROVIDE SAFETY GLASS COMPLYING WITH CPSC 16 CFR 1201.



FINISH SCHEDULE

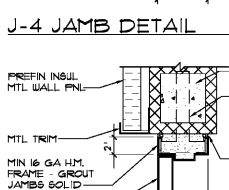
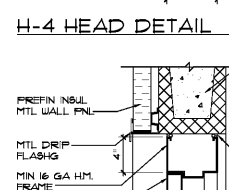
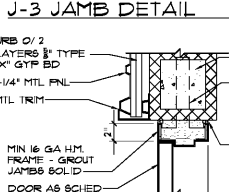
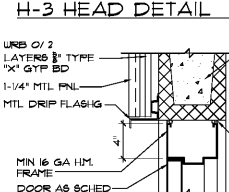
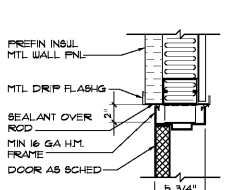
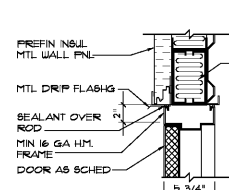
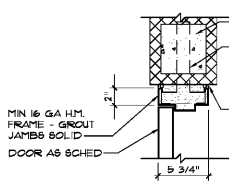
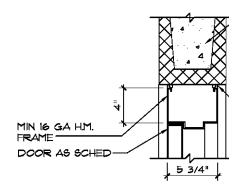
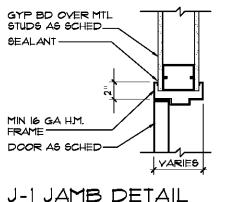
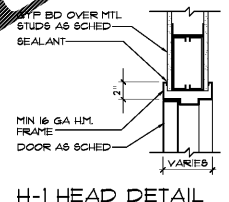
NO.	ROOM	FLOOR	BASE	WALLS	CLG	REMARKS
1ST FLOOR						
101	SALES	GT-1	CB-1	GB-F3	EXP-F6	FS AT HM, P4 AT ACCENT WALL
102	BREAK	GT-1	CB-1	GB-F3	AP-1	FS AT HM
103	UTILITY	CNC-S	---	EXP-F1	EXP	PI AT GB WALLS
104	TOILET	GT-1	CB-1	GB-F3	AP-1	FS AT HM, 48" FRP-1 WANSCOT
105	TOILET	GT-1	CB-1	GB-F3	AP-1	FS AT HM, 48" FRP-1 WANSCOT
106	ELECTRICAL	CNC-S	VB-1	GB-F1	EXP	
107	SPRINKLER	CNC-S	---	EXP-F1	EXP	PI AT GB WALLS
108	LOADING	CNC-S	---	EXP-F1	EXP	PI AT GB/CMU WALLS, US-1
109	ELEVATOR EQUIP	CNC-S	---	CMU	GB-F1	
110	STAIR 1	CNC-S	---	CMU	EXP	
111	STAIR 2	CNC-S	---	CMU	EXP	
112	UNITS	CNC-S	---	EXP-F1	EXP	PI AT GB/CMU WALLS, FS AT SF
2ND FLOOR						
201	LOBBY	CNC-S	---	EXP-F1	EXP	PI AT CMU WALLS, US-1
202	STAIR 1	CNC-S	---	CMU	EXP	
203	STAIR 2	CNC-S	---	CMU	EXP	
204	UNITS	CNC-S	---	EXP-F1	EXP	PI AT GB/CMU WALLS, FS AT SF

FINISH SCHEDULE NOTES

- FINISH UNSCHEDULED CLOSETS AND SPACES TO MATCH ADJOINING ROOMS.
- PAINT HOLLOW METAL DOORS AND FRAMES P2 UNO.
- PAINT STAIR RAILS, RISERS, CHANNLS, AND PANS FS.
- PROVIDE 6000"x4"x48" HIGH ALUM DIAMOND PLATE CORNER GUARDS AT ALL CORNERS/LOBBY OUTSIDE CORNERS.
- PROVIDE HALLWAY SYSTEM WITH FIERS, HEADERS AND PANELS PAINTED SEMI-GLOSS 'GLOSSY WHITE', AND COILING DOORS AND FRAMES PAINTED SEMI-GLOSS 'GLOSSY WHITE', UNO.
- COVER EXPOSED GYP BD IN LOBBIES AND CORRIDORS WITH HALLWAY PANELS TO THE HEIGHT OF THE HALLWAY SYSTEM.
- COVER EXPOSED GYP BD IN STORAGE UNITS WITH UNIT PARTITION PANELS TO THE HEIGHT OF THE UNIT PARTITIONS.
- PROVIDE FAUX COILING DOORS AND FRAMES IN OCCUPIED DISPLAYED AREAS AND CORRIDOR DOORS VISIBLE TO THE EXTERIOR PAINTED LIFE STORAGE YELLOW.

FINISH SCHEDULE LEGEND

AP-1	2"x2" SUSPENDED ACOUSTICAL PANEL CEILING - ARISTONS "FIBERED - 100" ANGLED REGULAR EDGE, WHITE, PRELUDE ML 19/16" SUSPENSION SYSTEM
CMU	CONCRETE MASONRY UNITS - NO FINISH
CMU-FX	CONCRETE MASONRY UNITS - PAINT IN COLOR/GLOSS INDICATED
CNC-S	CONCRETE SLAB - SEAL WITH CLEAR EPOXY COATING - 2 COATS IN ALL SPACES EXCEPT 1 COAT INSIDE STORAGE UNITS
GT-1	CERAMIC TILE - STYLE SELECTIONS SKYRGS GRAY 12"x12" PORCELAIN TILE WITH MAPEI "PEARL GRAY" SANDED GROUT
CB-1	CERAMIC BASE - STYLE SELECTIONS SKYRGS GRAY 2"x2" PORCELAIN TILE CUT TO 6" HEIGHT, WITH 3/8" ANODIZED ALUMINUM L-CHANNEL AND MAPEI "PEARL GRAY" SANDED GROUT
EXP	EXPOSED STRUCTURE - NO FINISH
EXP-FX	EXPOSED STRUCTURE - PAINT IN COLOR/GLOSS INDICATED
FRP-1	FIBERGLASS REINFORCED PLASTIC PANEL WANSCOT - MARLITE STANDARD FRP, SMOOTH SURFACE, 100% WHITE
GB	GYP/UM BOARD - NO FINISH
GB-FX	GYP/UM BOARD - PAINT IN COLOR/GLOSS INDICATED
F1	SHERWIN-WILLIAMS SW7028 "INCREDIBLE WHITE", EGG-SHELL
F2	SHERWIN-WILLIAMS SW7028 "INCREDIBLE WHITE", SEMI-GLOSS
F3	SHERWIN-WILLIAMS SW7026 "MATT MATTERS", EGG-SHELL
F4	SHERWIN WILLIAMS SW608 CONGRUOUS BLUE, EGG-SHELL
F5	SHERWIN WILLIAMS SW126 "LITTSCEAPE", SEMI-GLOSS
W	SHERWIN WILLIAMS - FLAT, TO BE DETERMINED
W1	WANSCOT - 2000"x48" HIGH ALUM DIAMOND PLATE
VB-1	VNTL BASE - 4" VNTL COVE BASE - JOHNSONITE 40 "BLACK"



S-1 SILL DETAIL
H-5 HEAD DETAIL
J-5 JAMB DETAIL
 HEAD, JAMB, AND SILL DETAILS
 SCALE: 1-1/2"=1'-0"



THESE DRAWINGS AND DESIGN ARE THE PROPERTY OF STANLEY DURA-GLIDE ARCHITECTURE, INC. AND SHALL NOT BE REPRODUCED, COPIED, OR TRANSMITTED IN ANY FORM OR BY ANY MEANS, ELECTRONIC OR MECHANICAL, WITHOUT THE WRITTEN PERMISSION OF STANLEY DURA-GLIDE ARCHITECTURE, INC. THESE DRAWINGS ARE NOT TO BE USED FOR CONSTRUCTION OF ANY TYPE, AND ARE NOT SUITABLE FOR ANY OTHER PURPOSE. ALL DIMENSIONS MUST BE VERIFIED BY THE CONTRACTOR AND DISCREPANCIES BEFORE PROCEEDING WITH CONSTRUCTION. CONTRACTOR SHALL BE RESPONSIBLE FOR OBTAINING ALL NECESSARY PERMITS AND APPROVALS. (SCALE: NOT SHOWN)

Life Storage #354
 2020 South College St
 Auburn, AL 36832



ISSUE FOR CONSTRUCTION REVISIONS:

NO.	DESCRIPTION

PROJECT NUMBER: 201839
 DATE: 3-15-19

SHEET NUMBER

A7.1