

THESE DRAWINGS AND DESIGNS ARE THE PROPERTY OF STANARD ARCHITECTURE, INC. AND SHALL NOT BE REPRODUCED, COPIED, OR TRANSMITTED IN ANY FORM OR BY ANY MEANS, ELECTRONIC OR MECHANICAL, WITHOUT THE WRITTEN PERMISSION OF STANARD ARCHITECTURE, INC. THEY ARE PREPARED FOR USE ON THIS SPECIFIC PROJECT AND ARE NOT VALID FOR ANY OTHER PROJECT. ALL DIMENSIONS MUST BE VERIFIED BY THE CONTRACTOR AND DISCREPANCIES BEFORE PROCEEDING WITH CONSTRUCTION. THESE DRAWINGS DO NOT SCALE.

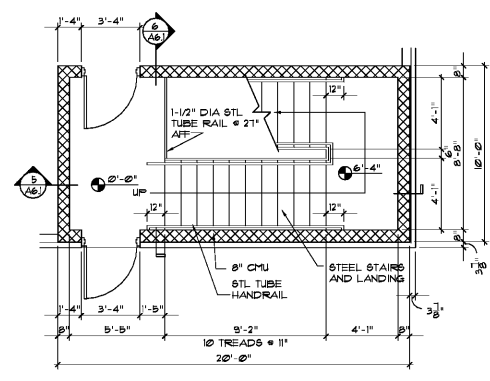
Life Storage #354
2020 South College St
Auburn, AL 36832



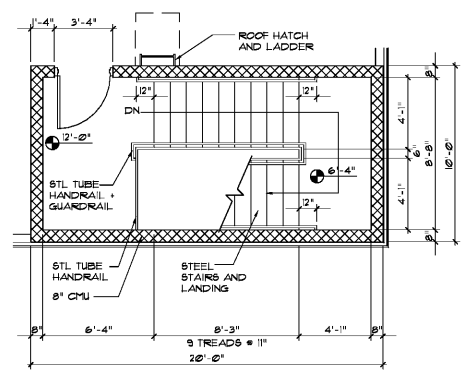
ISSUE FOR CONSTRUCTION REVISIONS:

PROJECT NUMBER
201839
DATE
3-15-19

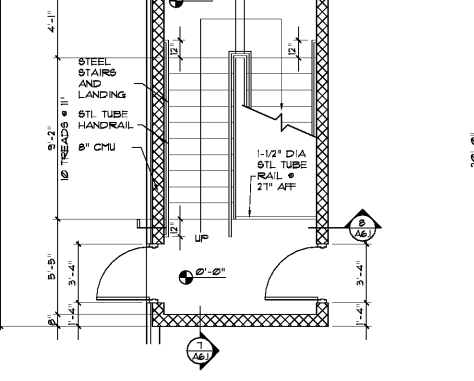
SHEET NUMBER
A6.1



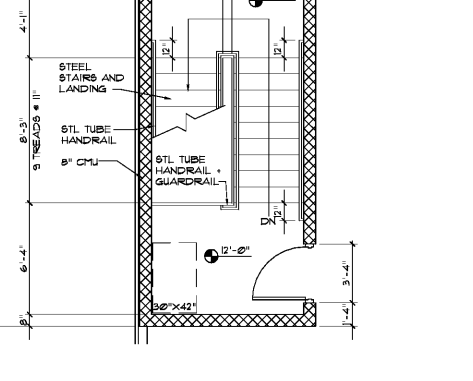
1 FIRST FLOOR PLAN - STAIR 1
A6.1 SCALE: 1/4"=1'-0"



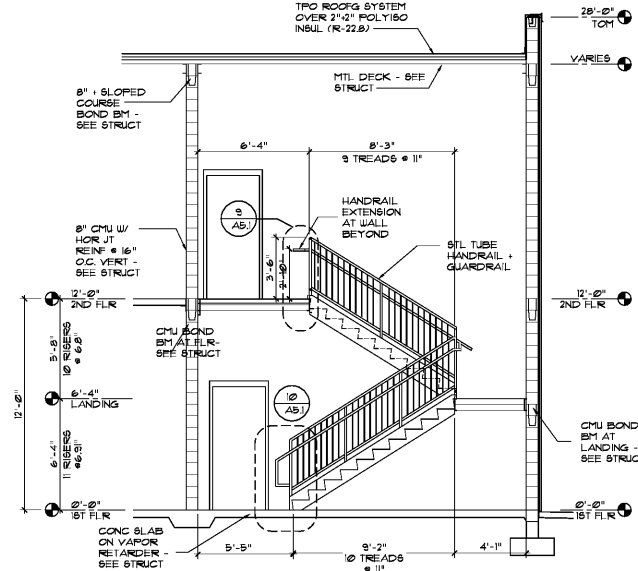
2 SECOND FLOOR PLAN - STAIR 1
A6.1 SCALE: 1/4"=1'-0"



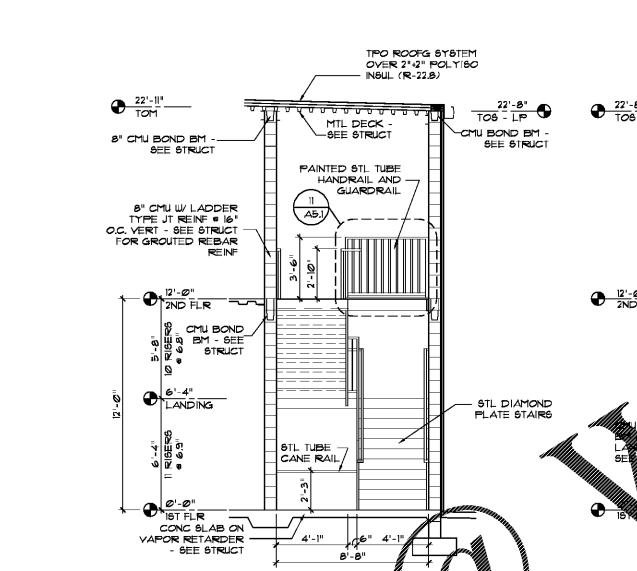
3 FIRST FLOOR PLAN - STAIR 2
A6.1 SCALE: 1/4"=1'-0"



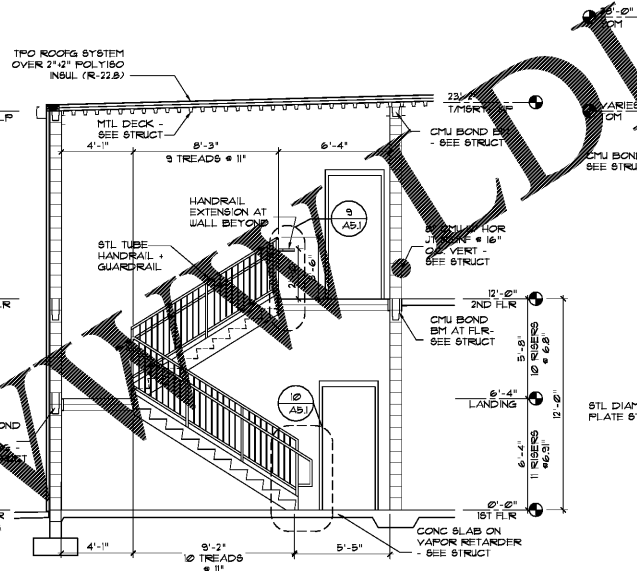
4 SECOND FLOOR PLAN - STAIR 2
A6.1 SCALE: 1/4"=1'-0"



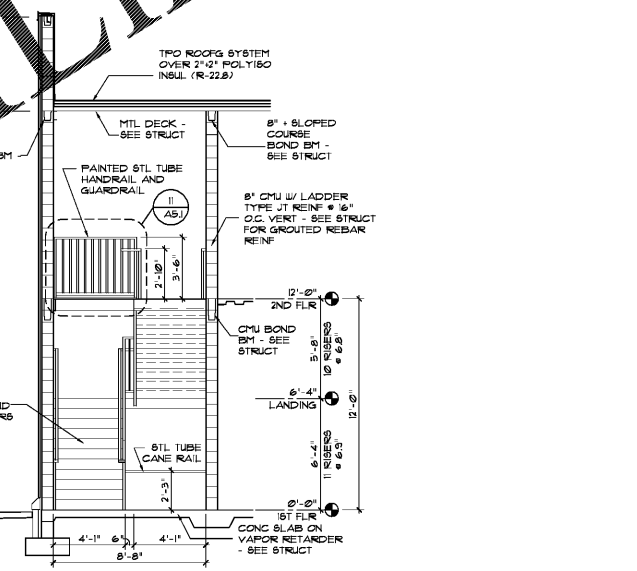
5 SECTION - STAIR 1
A6.1 SCALE: 1/4"=1'-0"



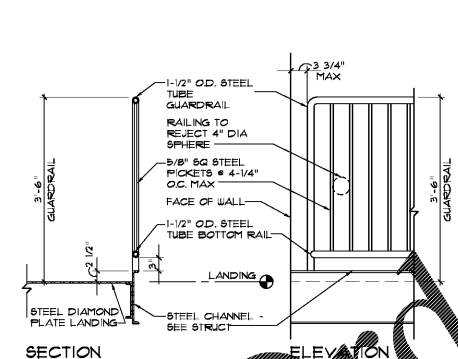
6 SECTION - STAIR 1
A6.1 SCALE: 1/4"=1'-0"



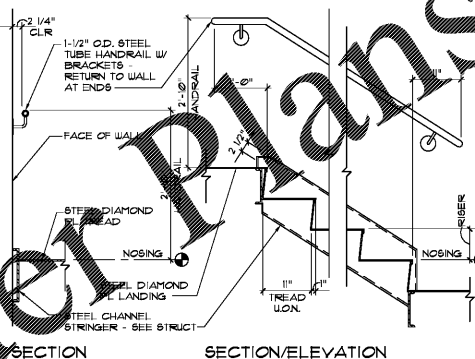
7 SECTION - STAIR 2
A6.1 SCALE: 1/4"=1'-0"



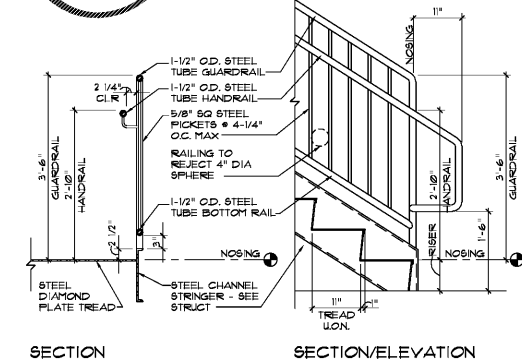
8 SECTION - STAIR 2
A6.1 SCALE: 1/4"=1'-0"



9 GUARDRAIL AND LANDING DETAIL
A6.1 SCALE: 3/4"=1'-0"

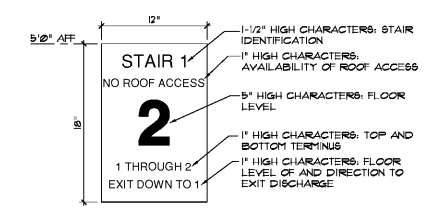


10 WALL RAIL AND STAIR DETAIL
A6.1 SCALE: 3/4"=1'-0"



11 GUARDRAIL AND STAIR DETAIL
A6.1 SCALE: 3/4"=1'-0"

STAIR SHAFT MASONRY IS DIMENSIONED TO FACE OF CMU UNLESS OTHERWISE INDICATED. MASONRY WALL THICKNESS DIMENSIONS ARE NOMINAL. HOLD OUTSIDE STAIR SHAFT DIMENSIONS.



12 STAIR SIGNAGE
A6.1 SCALE: 1-1/2"=1'-0"

Order Plans

WWW.DILine.com