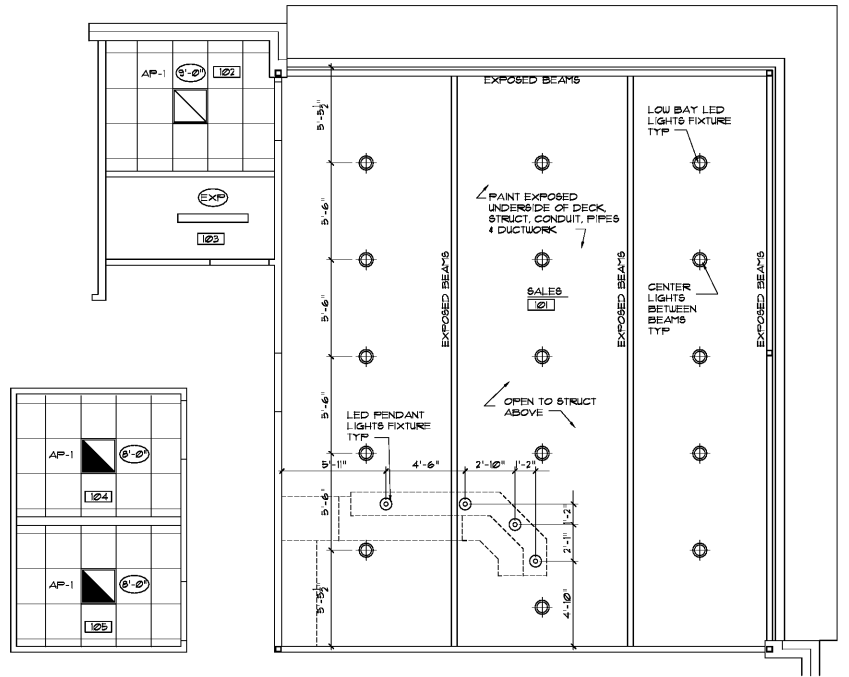


1 ENLARGED OFFICE PLAN
SCALE: 1/4"=1'-0"



2 OFFICE REFLECTED CEILING PLAN
SCALE: 1/4"=1'-0"

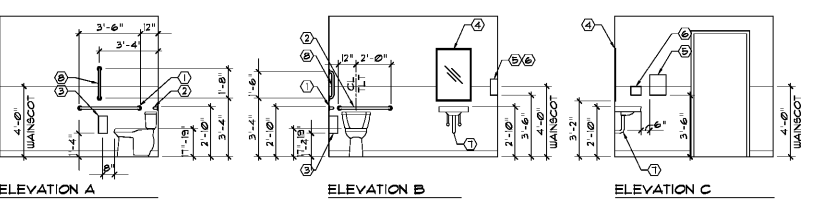
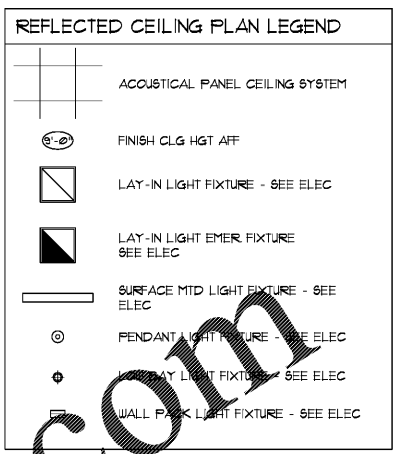
CASEWORK FINISH SCHEDULE		
MARK	DESCRIPTION	COMMENTS
FL-1	KENNINGTON MAPLE SURFACE WILSONART 9216	TIGHT FORM ROLLED EDGE
FL-2	WILSONART BALENTINO NERO 1864 HD FINISH	
B-1	3" x 4" FLAN SOLID BANDING 6092 ENGLISH STAINLESS STEEL	

HARDWARE:
3/8" DIA CENTER POLISHED CHROME WIRE PULL
STAND-OFF:
MOORETTI 4 COMPANY, INC.
1" DIA BARREL BATIN ALUM STAND-OFF MPB94-94
1" DIA LOW PROFILE STAND-OFF CAP MP92/CAP2-94 BATIN ALUM
1" DIA SCREW CONNECTOR MPB-HD-822
1" DIA TABLE TOP MOUNTING HARDWARE MPB-HD-115

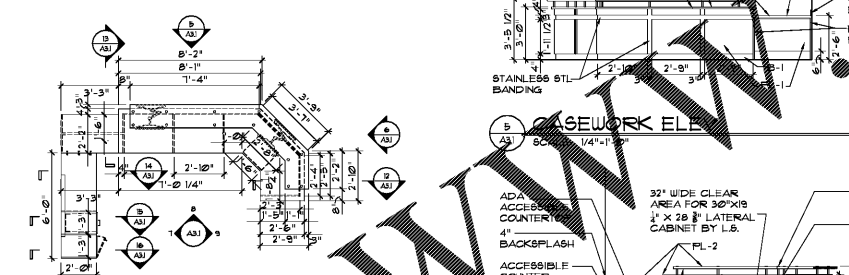
NOTE:
FILLWORK TO BE FURNISHED AND INSTALLED BY GC.

TOILET ACCESSORY SCHEDULE		
MARK	DESCRIPTION	SPECIFICATION
(1)	1-1/2" DIA x 42" GRAB BAR	BOBRICK B-6806x42"
(2)	1-1/2" DIA x 36" GRAB BAR	BOBRICK B-6806x36"
(3)	TOILET PAPER DISPENSER	BOBRICK B-4288
(4)	1-1/2" x 3-1/2" MIRROR	BOBRICK B-1658 24x36
(5)	TOILET DISPENSER	BOBRICK B-4262
(6)	SOAP DISPENSER	BOBRICK B-412
(7)	DRAIN & GUFFLY PIPE INSUL	TRIEBERO LAY GUARD 2
(8)	1-1/2" DIA x 18" GRAB BAR	BOBRICK B-6806x18"
(9)	TOILET SIGN	CAL-ROYAL HANDICAP BLUE

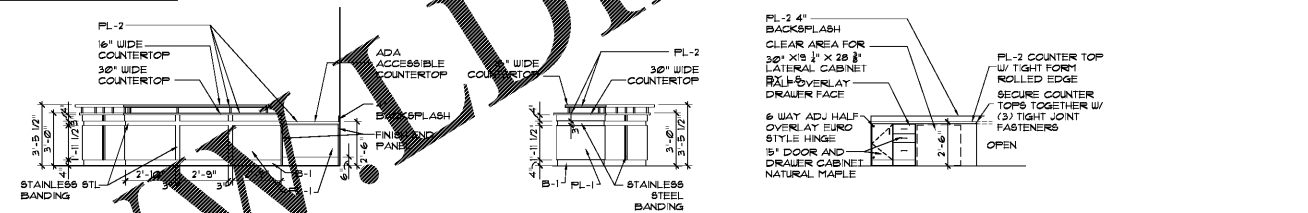
NOTE:
PROVIDE BLOCKING IN WALLS FOR ATTACHMENT OF TOILET ACCESSORIES



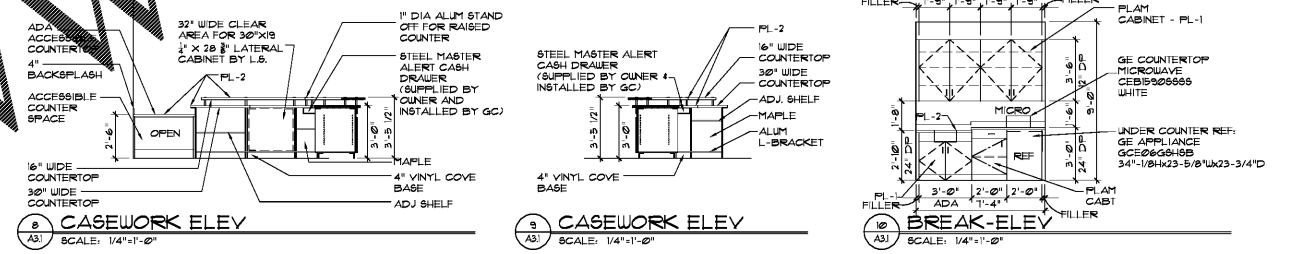
3 TOILET ELEVATIONS
SCALE: 1/4"=1'-0"



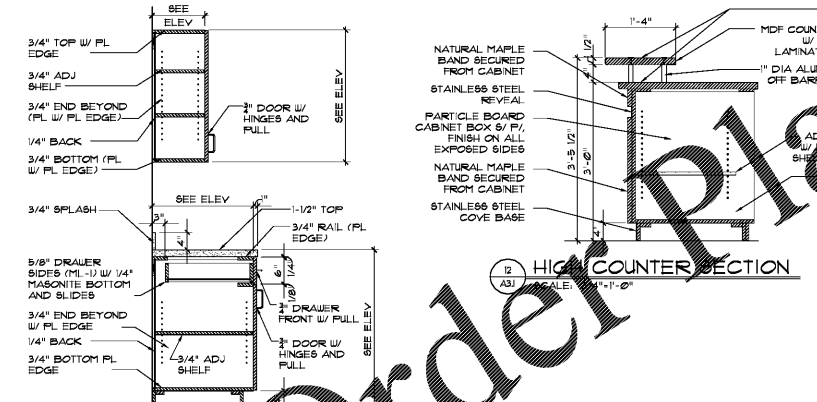
4 WORKSTATION PLAN
SCALE: 1/4"=1'-0"



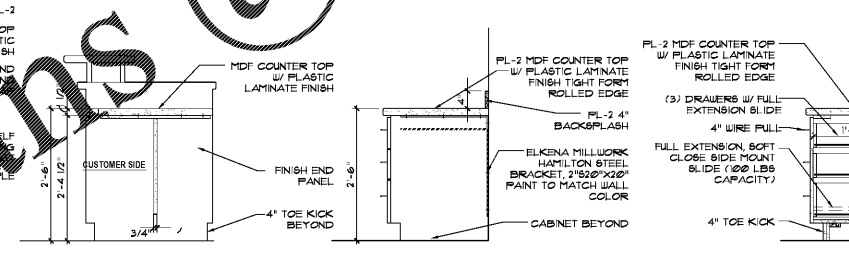
5 CASEWORK ELEV SCALE: 1/4"=1'-0"
6 CASEWORK ELEV SCALE: 1/4"=1'-0"
7 CASEWORK ELEV SCALE: 1/4"=1'-0"



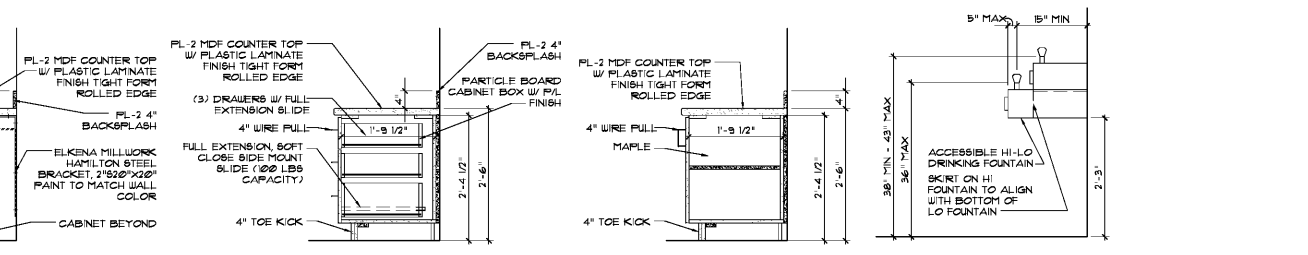
8 CASEWORK ELEV SCALE: 1/4"=1'-0"
9 CASEWORK ELEV SCALE: 1/4"=1'-0"
10 BREAK-ELEV SCALE: 1/4"=1'-0"



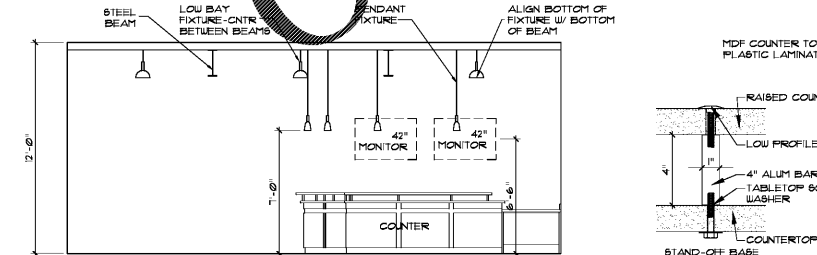
11 SECTION-WORK COUNTER
SCALE: 3/4"=1'-0"



12 HIGH COUNTER SECTION SCALE: 3/4"=1'-0"
13 LOW COUNTER SECTION SCALE: 3/4"=1'-0"



14 COUNTER SECTION SCALE: 3/4"=1'-0"
15 COUNTER SECTION SCALE: 3/4"=1'-0"
16 COUNTER SECTION SCALE: 3/4"=1'-0"



18 OFFICE -ELEV
SCALE: 1/4"=1'-0"



19 DESK DETAILS
SCALE: 3"=1'-0"



THESE DRAWINGS AND DESIGNS ARE THE PROPERTY OF STINSON ARCHITECTURE, INC. AND SHALL NOT BE REPRODUCED, COPIED, OR TRANSMITTED IN ANY FORM OR BY ANY MEANS, ELECTRONIC OR MECHANICAL, WITHOUT THE WRITTEN PERMISSION OF STINSON ARCHITECTURE, INC. ANY UNAUTHORIZED USE OF THESE DRAWINGS IS PROHIBITED. DATE AND ARE NOT SUITABLE FOR CONSTRUCTION. ALL DIMENSIONS MUST BE VERIFIED BY THE CONTRACTOR AND DISCREPANCIES BEFORE PROCEEDING WITH CONSTRUCTION. DRAWINGS DO NOT SCALE.

Life Storage #354
2020 South College St
Auburn, AL 36832



ISSUE FOR CONSTRUCTION REVISIONS	

PROJECT NUMBER
201839
DATE
3-15-19

SHEET NUMBER

A3.1