

- V1 (1) CAT 5e IN 1/2" CONDUIT
- V2 (2) CAT 5e IN 1/2" CONDUIT
- V3 (3) CAT 5e IN 1/2" CONDUIT
- V4 (4) CAT 5e IN 1" CONDUIT
- V6 (6) CAT 5e IN 1" CONDUIT
- V7 (7) CAT 5e IN 1 1/2" CONDUIT

**NOTE:**  
ALL CAT 5e CABLES TO BE LABELED NUMERICALLY AT EACH END. COORDINATE WITH TENANT'S REPRESENTATIVE PRIOR TO INSTALLATIONS.

**DATA SYSTEM LEGEND**

SYMBOL	DESCRIPTION
	DUPLEX RECEPTACLE - NEMA 5-20R U.N.O.
	EXISTING DUPLEX RECEPTACLE
	GROUND FAULT INTERRUPTER DUPLEX RECEPTACLE
	QUAD RECEPTACLE
	JUNCTION BOX
	DATA OUTLET
	PHONE OUTLET
+12	DISTANCE ABOVE FLOOR LINE OF AREA WHERE SHOWN
	PUSH BUTTON
	BLUZZER TRANSFORMER
	BLUZZER

1. ALL WORK SHALL BE PERFORMED IN STRICT COMPLIANCE WITH NATIONAL ELECTRICAL CODE (N.E.C.) AND ANY STATE/LOCAL CODES.
2. ALL CONDUIT SHALL BE GALVANIZED RIGID HEAVY WALL STEEL, OR EMT, SIZES SHALL BE DETERMINED PER N.E.C. WATERTIGHT FITTINGS SHALL BE PROVIDED. EMT CONDUITS SHALL HAVE COMPRESSION FITTINGS. FLEXIBLE CONDUITS (GALVANIZED STEEL) MAY BE USED FOR SHORT CONDITIONS TO VIBRATING EQUIPMENT, AND SHOWCASES, AS REQUIRED. 1/2" SIZE MINIMUM, WITH A MAXIMUM LENGTH OF 6 FEET.
3. ROMEX, BX, OR NON-METALLIC SHEATHED CABLE WILL NOT BE PERMITTED.
4. VOICE AND DATA JACKS ARE TO BE CONSOLIDATED AS NOTED AND SHOWN AT THE LOCATIONS OF THE FUTURE FRONT AND BACK CASHWRAPS (BY TENANT). LONG LINE CORDS AND PATCH CORD ROUTED THROUGH CHASES IN MILLWORK WILL BE USED TO ACCOMMODATE EQUIPMENT.
5. CABLE SUPPORTS, CONDUIT, BUSES, BUSING, AND WIRING BY ELECTRICAL CONTRACTOR.
6. ALL LOW VOLTAGE WIRING ABOVE CEILING SHALL BE PLENUM RATED OR INSTALLED IN METAL CONDUIT. IF PLENUM CABLE IS USED IT SHALL BE SUPPORTED PER TIA/EIA 568B STANDARDS.
7. TELEPHONE DATA CABLING VENDOR TO REFER TO INSTALLATION DETAILS PROVIDED IN JOBS PACKAGE FOR MORE SPECIFIC WIRING INFORMATION.
8. ELECTRICAL CONTRACTOR TO LEAVE 1'-0" OF CABLE COILED AT ROUTER.
9. ALL DATA WALL BOXES SHALL BE A SINGLE GANG BOX WITH SINGLE GANG PLASTER RING.
10. ALL DATA FLOOR BOXES SHALL BE A SINGLE GANG BOX WITH GROMMETED HOLE IN COVER PLATE.
11. ALL CABLES SHALL BE TERMINATED ON THE 'USER END' I.E. FUTURE TENANT MILLWORK LOCATIONS, INTO A CAT-5 JACK AND LABELED INDICATING THE CABLE NUMBER AFFIXED ABOVE EACH JACK. LABEL THE OPPOSITE END WITH THE SAME NUMBER ON A PIECE OF MASKING TAPE WRAPPED AROUND EACH CABLE. ALL DATA CABLES RUN TO CASHWRAP - TERMINATE WITH 8'-0" COIL.
12. OWNER TO BE RESPONSIBLE FOR FINAL TERMINATION OF CABLES TO ROUTER.
13. ANY EXPOSED CONDUIT TO BE PAINTED TO MATCH WALL U.N.O.
14. REPLACE DAMAGED OR MISSING SWITCH AND RECEPTACLE PLATES.

1. FURNISH AND INSTALL 30 AMP, 208V CIRCUIT IN CONDUIT ABOVE CEILING TO STUFFER LOCATION. ROUTE WIRE DOWN THROUGH 2x2 POWER POLE (PAINT (PT3)) AND MAKE FINAL ELECTRICAL CONNECTION TO STUFFING MACHINE. COORDINATE ALL REQUIREMENTS WITH EQUIPMENT MANUFACTURER PRIOR TO ROUGH-IN. PROVIDE WITH A PERMANENT LOCKABLE CIRCUIT BREAKER.
2. FURNISH AND INSTALL 30 AMP, 120V CIRCUIT IN CONDUIT ABOVE CEILING TO STUFFER LOCATION. ROUTE WIRE DOWN THROUGH POWER POLE (SEE KEY NOTE 1) AND CAP FOR FUTURE CONNECTION OF ALTERNATE STUFFING MACHINE. **DO NOT FULLY CONNECT THE 120V CIRCUIT AT THE STUFFER OR AT THE PANEL.**
3. FURNISH AND INSTALL 20 AMP, 120V CIRCUIT IN CONDUIT TO HEAR-ME/NAME-NAME STATION. FURNISH AND INSTALL DOUBLE DUPLEX DEDICATED GROUND RECEPTACLE IN BOTTOM OF FLOOR FIXTURE. COORDINATE FINAL LOCATION WITH CONSTRUCTION MANAGER.
4. FURNISH AND INSTALL (3) CAT5e CABLES AND ROUTE TO ROUTER IN FRONT CASHWRAP. LEAVE 8'-0" OF CABLE COILED AT BOTH ENDS.
5. FURNISH AND INSTALL DEDICATED GROUND DUPLEX RECEPTACLE IN CASHWRAP. WIRE GROUND WIRE (GREEN #12 THWN) FROM GROUND LUG ON DEDICATED RECEPTACLE TO EQUIPMENT GROUND BUS. DEDICATED GROUND RECEPTACLES ALSO TO HAVE SEPARATE WHITE NEUTRAL FROM AC COMMON LUG IN PANEL TO DEDICATED GROUND RECEPTACLE WITHIN CASHWRAP.
6. ROUTE CONDUIT THROUGH BASE OF CASHWRAP AND STUB UP INTO CHASE.
7. 1" CONDUIT FOR DATA/COMMUNICATION SHALL BE INSTALLED CONCEALED IN MILLWORK AND CONNECT TO OVER FLOOR RACEWAY. ELECTRICAL CONTRACTOR TO TERMINATE 1" CONDUIT UNDER FRONT CASHWRAP COUNTER WITH 4 1/2"x2 1/2"x2 1/2" JUNCTION BOX WITH FLAT SINGLE GANG COVER MOUNTED HORIZONTALLY. PROVIDE (2) CAT5e CABLES FROM BACK CASHWRAP TO ROUTER. REFER TO GENERAL NOTES FOR MORE INFORMATION.
8. FURNISH AND INSTALL (2) SECTIONS OF 'WIREMOLD' 3600 SERIES PANCAKE OVER FLOOR STEEL RACEWAY. PROVIDE SYSTEM WITH ALL ACCESSORIES AS NEEDED FOR A COMPLETE AND OPERATIONAL SYSTEM. INSTALL BETWEEN FRONT AND BACK CASHWRAP COUNTERS. ROUTE FRONT CASHWRAP POWER WIRING IN ONE RACEWAY AND ROUTE FRONT CASHWRAP DATA AND COMMUNICATION WIRING IN THE OTHER RACEWAY.
9. WIRE FOR CASHWRAP SHALL BE INSTALLED CONCEALED IN MILLWORK CONDUIT AND RUN OVER FLOOR RACEWAY.
10. FURNISH AND INSTALL CHILD SAFETY COVERS ON ANY EXPOSED RECEPTACLES IN SAME AREA.
11. FURNISH AND INSTALL DOUBLE DUPLEX DEDICATED GROUND RECEPTACLE IN BACK CASHWRAP.
12. FURNISH AND INSTALL 4 1/2"x2 1/2"x2 1/2" JUNCTION BOX WITH SINGLE GANG PLASTER RING MOUNTED FLUSH IN WALL BEHIND BACK CASHWRAP AND EXTEND 1" CONDUIT TO ABOVE ACCESSIBLE CEILING. SEE DATA SYSTEM LEGEND FOR MORE INFORMATION.

13. FURNISH AND INSTALL 1" CONDUIT TO CASHWRAP AND INSTALL PLASTIC BUSHING ON END OF CONDUIT. EXTEND 1" CONDUIT IN MILLWORK AND CONNECT TO OVER FLOOR RACEWAY AND TERMINATE AT JUNCTION BOX.
14. FURNISH AND INSTALL CONDUIT DOWN IN WALL TO 4 1/2"x2 1/2"x2 1/2" JUNCTION BOX IN WALL 18" A.F.F. BELOW MANAGER'S DESK. REFER TO DATA SYSTEM LEGEND FOR QUANTITY OF CAT5e AND CONDUIT SIZE.
15. FURNISH AND INSTALL DOUBLE DUPLEX RECEPTACLE AT +18" A.F.F.
16. FURNISH AND INSTALL GFCI DUPLEX RECEPTACLE AT +18" A.F.F. FOR MINI-FRIDGE.
17. FURNISH AND INSTALL GFCI DUPLEX RECEPTACLE AT +18" A.F.F. FOR MICROWAVE.
18. FURNISH AND INSTALL GFCI DUPLEX RECEPTACLE AT +18" A.F.F. FOR BOTTLED WATER COOLER.
19. FURNISH AND INSTALL CONDUIT ABOVE CEILING FROM CASHWRAP TO LOCATION OF WIRELESS ACCESS POINT (WAP). LEAVE 5'-0" OF CABLE COILED ABOVE CEILING DEVICE LOCATION. REFER TO DATA SYSTEM LEGEND FOR MORE INFORMATION. WAP FURNISHED AND INSTALLED BY OWNER.
20. FURNISH AND INSTALL CONDUIT ABOVE CEILING FROM CASHWRAP TO LOCATION OF SHOPPER TRACKER DEVICE. LEAVE 5'-0" OF CABLE COILED ABOVE CEILING AT DEVICE LOCATION. REFER TO DATA SYSTEM LEGEND FOR MORE INFORMATION. SHOPPER TRACKER FURNISHED AND INSTALLED BY OWNER.
21. INSTALL CEILING MOUNTED SPEAKER PROVIDED BY OWNER. PROVIDE (2) #18 AWG WIRES PER SPEAKER PAIR. LEAVE 8'-0" OF WIRE COILED AT MANAGER'S DESK. SEE WIRING DETAIL THIS SHEET. SEE REFLECTED CEILING PLAN FOR CONTACT LOCATION.
22. ELECTRICAL AND DATA DEVICES, CONDUIT, AND WIRE IN THIS AREA ARE EXISTING TO REMAIN UNLESS NOTED OTHERWISE.
23. EXIST. HVAC SENSOR/T-STAT AND ELECTRICAL SWITCHES TO REMAIN.

REMOVE EXIST. RECEPTACLES/WIRING AS NECESSARY FOR NEW RECEPTACLE LOCATIONS. PATCH/REPAIR GYP. BOARD'S REQUIRED FOR SMOOTH/FLUSH FINISH.

**10 SPEAKER DETAIL**  
SCALE: N/A

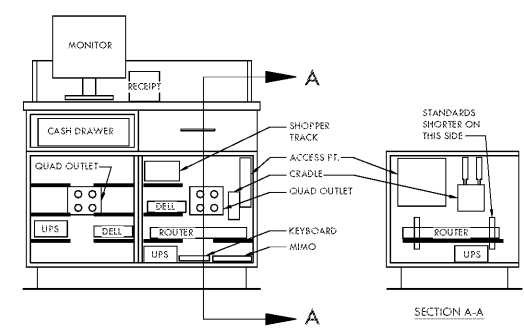
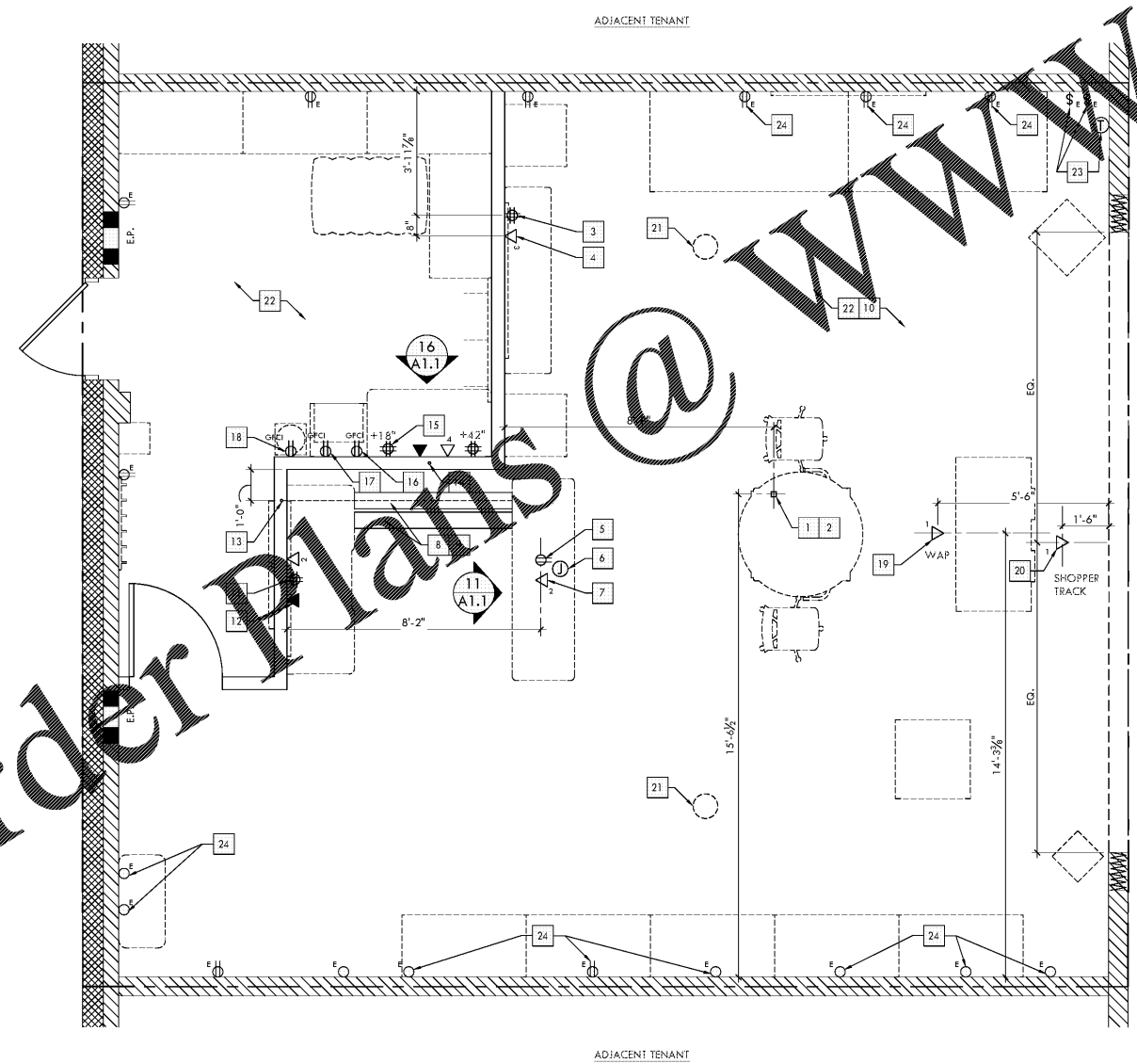
**ELECTRICAL SYMBOLS**

**ELECTRICAL/DATA GENERAL NOTES**

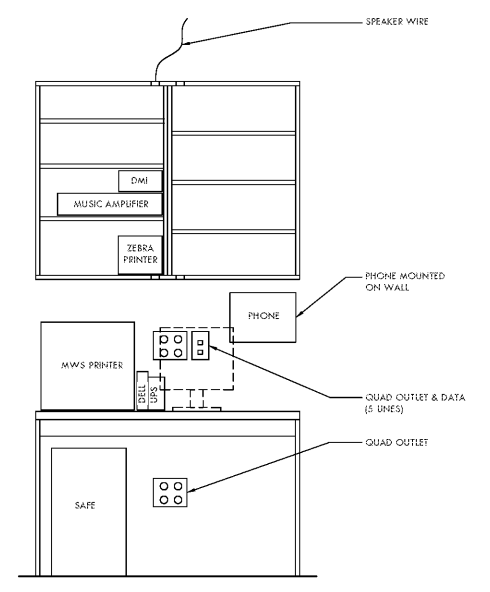
**ELECTRICAL AND DATA KEYNOTES** 1 2 3

Order Plans @

WWW.LDOnline.com



**11 CASHWRAP DETAIL**  
SCALE: 3/4" = 1'-0"



**16 MANAGER'S DESK**  
SCALE: 3/4" = 1'-0"

**20 POWER AND DATA PLAN**  
SCALE: 3/8" = 1'-0"

**Artifex**  
design studio  
architects

Artifex Design Studio, Inc.  
1215 Fern Ridge Pkwy  
Suite 210  
St Louis, MO 63141  
p. 314-390-1945

COPYRIGHT © 2019  
Artifex Design Studio, Inc.

PROFESSIONAL SEAL

CONSULTANTS:

PROJECT TITLE:  
BUILD-A-BEAR WORKSHOP  
WOODSTOCK WALMART #5275  
WOODSTOCK, GA



No.	Date	Revision Description
BY:		PCJ
DATE:	04/01/19	
PROJ. NO.:	19026	

SHEET TITLE:  
**POWER AND DATA PLAN**

SHEET NO.:  
**A1.1**

**BID SET**