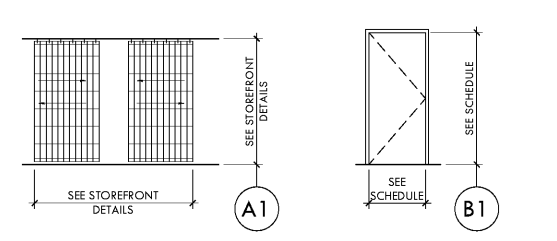


- ALL EGRESS HARDWARE SHALL BE OPERABLE FROM THE INSIDE WITHOUT ANY SPECIAL KNOWLEDGE OR EFFORT. DOOR HANDLES, PULLS, LATCHES, LOCKS AND OTHER OPERATING DEVICES REQUIRED TO BE ACCESSIBLE SHALL NOT REQUIRE TIGHT GRASPING, TIGHT PINCHING OR TWISTING OF THE WRIST TO OPERATE.
- THE OPENING FORCE FOR INTERIOR SIDE-SWINGING DOORS WITHOUT CLOSERS SHALL NOT EXCEED A 5 LB. FORCE. FOR OTHER SIDE-SWINGING, SLIDING AND FOLDING DOORS, THE DOOR LATCH SHALL RELEASE WHEN SUBJECTED TO A 5 LB. FORCE. THE DOOR SHALL BE SET IN MOTION WHEN SUBJECTED TO A 30 LB. FORCE. THE DOOR SHALL SWING TO A FULL-OPEN POSITION WHEN SUBJECTED TO A 15 LB. FORCE. FORCES SHALL BE APPLIED TO THE LATCH SIDE.
- HORIZONTAL SLIDING OR VERTICAL SECURITY GRILLES WHERE USED AT THE MAIN EXIT SHALL BE OPENABLE FROM THE INSIDE WITHOUT THE USE OF A KEY OR SPECIAL KNOWLEDGE OR EFFORT DURING PERIODS THAT THE SPACE IS OCCUPIED. THE GRILLE SHALL REMAIN SECURED IN THE FULL-OPEN POSITION DURING THE PERIOD OF OCCUPANCY BY THE GENERAL PUBLIC. ON OR ADJACENT TO THE GRILLE, THERE SHALL BE A READILY VISIBLE, DURABLE SIGN IN LETTERS NOT LESS THAN 1 INCH HIGH ON A CONTRASTING BACKGROUND THAT READS AS FOLLOWS: "THIS DOOR TO REMAIN OPEN WHEN THE BUILDING IS OCCUPIED."
- EGRESS DOOR OPERATING HARDWARE SHALL BE ACCESSIBILITY COMPLIANT AND MOUNTED BETWEEN 2'-10" AND 4'-0" A.F.F. TO CENTERLINE (DOOR HANDLES, PUSH PLATES AND PULLS SHALL BE MOUNTED 3'-3" A.F.F. TO THE CENTERLINE, U.N.O.).
- PROVIDE UL-TESTED AND LISTED HARDWARE FOR INSTALLATION WITHIN FIRE-RATED ASSEMBLIES.
- FURNISH ALL HARDWARE AS SPECIFIED IN THE HARDWARE GROUP AND AS NECESSARY TO RESULT IN A COMPLETE INSTALLATION.

- SIZE AND MOUNT HARDWARE IN ACCORDANCE WITH THE MANUFACTURER'S RECOMMENDATIONS; REINFORCE THE MOUNTING SUBSTRATE AS REQUIRED FOR PROPER INSTALLATION.
- ALL HARDWARE FINISHES SHALL BE BHMA 630 (SATIN STAINLESS STEEL) FINISH OR EQUIVALENT U.N.O.
- ALL HARDWARE SHALL BE FURNISHED AND INSTALLED BY THE GENERAL CONTRACTOR.

APPROVED HARDWARE MANUFACTURERS:

- RE-KEYABLE CYLINDERS: SECURITY SOLUTIONS "U-CHANGE #5" (NO SUBSTITUTIONS, U.N.O.)
- LEVERSETS AND LOCKSETS: SCHLAGE, YALE, CORBIN RUSSWIN, SARGENT, BEST
- PUSH PLATES AND PULL HANDLES, KICK PLATES, FLUSH BOLTS: ROCKWOOD, BALDWIN, IVES
- PANIC DEVICES: DETEX
- BUTT HINGES: HAGER, MCKINNEY, STANLEY
- CLOSERS: LCN, NORTON, YALE (WITH MATCHING COVERS)
- STOPS AND HOLD-OPEN DEVICES: IVES, GYLNK-JOHNSON
- THRESHOLDS: NATIONAL GUARD, PEMKO, ZERO
- SEALS AND WEATHERSTRIP: ZERO, REESE, PEMKO



- NOTES:**
- ALL KEYED CYLINDERS WILL BE OWNER FURNISHED, CONTRACTOR INSTALLED UNLESS NOTED OTHERWISE.
 - #5 U-CHANGE CYLINDER ONLY ON FRONT ROLLING/ FOLDING GRILLES/ GATES, GLASS DOORS AND REMOTE STORAGE DOORS.

- GROUP 1 - EACH TO RECEIVE: (STOREFRONT)**
- EA. #5 "U-CHANGE" DOUBLE KEYED CYLINDER LOCK (RE-KEY IF EXISTING)
- GROUP 2 - EACH TO RECEIVE: (STOCK ROOM)**
- SET PUSH PLATES/PULL HANDLES
 - EA. DOOR CLOSER - 4040 LCN
 - PR. HINGES, 4 1/2" X 4 1/2"
 - EA. DOOR STOP
 - EA. 3'-0" HIGH S.S. KICK PLATE (PUSH SIDE) - ROCKWOOD
- GROUP 3 - (REAR EXIT - EXIST.)**
- NO NEW HARDWARE NECESSARY
- EA. PANIC HARDWARE (EXIST.)
 - SET WEATHER SEAL (EXIST.)
 - PR. HINGES, 4 1/2" X 4 1/2" (EXIST.)
 - EA. ALUMINUM THRESHOLD (EXIST.)
 - EA. BOTTOM SWEEP (EXIST.)

DOOR HARDWARE NOTES

DOOR TYPES/HARDWARE SCHEDULE



DOOR NUMBER	LOCATION	DOOR SIZE	MAT'L	FINISH	TYPE	FRAME MAT'L	FRAME FINISH	DETAIL	HDWE. GROUP	SUPP. BY	INST. BY	REMARKS
1	MAIN ENTRY	SEE STOREFRONT DETAILS (EXIST.)	(EXIST.)	CLEAR ANODIZED ALUMINUM	A1 (EXIST.)	(EXIST.)	(EXIST.)	(EXIST.)	1	(EXIST.)	(EXIST.)	CLEAN EXIST. GRILLE TO 'LIKE-NEW' CONDITION
2	STOCKROOM	3'-0"x6'-8"x1 1/2"	HOLLOW METAL	PT1	B1	HOLLOW METAL	PT1	9/C3.0	2	G.C.	G.C.	SEE NOTE #2
3	REAR EXIT	3'-0"x7'-0"x1 1/2" (EXIST.)	(EXIST.)	SEE NOTE 1	B1 (EXIST.)	(EXIST.)	SEE NOTE 1	(EXIST.)	3	(EXIST.)	(EXIST.)	

- NOTES:**
- DOOR AND FRAME SURFACES FACING THE SALES FLOOR/STOCK ROOM TO BE PAINTED PT1.
 - DOOR CLOSERS SHALL BE ADJUSTED SO THAT FROM AN OPEN POSITION OF 90°, THE TIME REQUIRED TO MOVE THE DOOR TO A POSITION OF 12° FROM THE LATCH IS 5 SECONDS MINIMUM.

10 - SCALE: -

9 DOOR FRAME DETAIL SCALE: 3" = 1'-0"

DOOR SCHEDULE



15 - SCALE: -

14 - SCALE: -

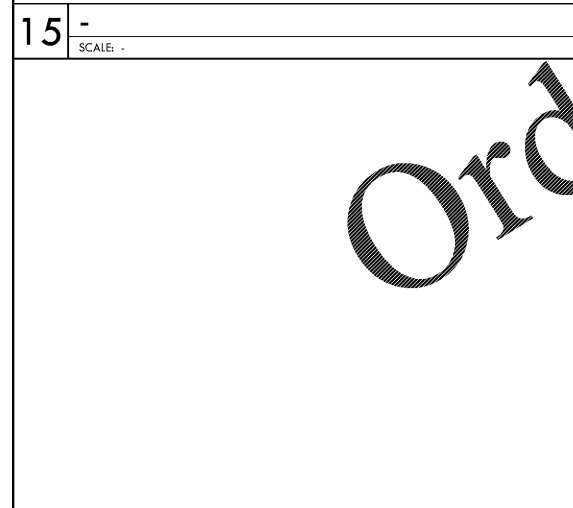
BUILD-A-BEAR WORKSHOP ORDER INSTRUCTIONS & PRICING

TO ORDER CONTACT:
 BENJAMIN MOORE
 NATIONAL ACCOUNTS ORDER DEPT.
 PHONE: 877-623-8484
 FAX: 862-432-4362
 EMAIL: CCP@BENJAMINMOORE.COM
 OFFICE HOURS: 7AM - 7PM ET

FOR QUESTIONS, PLEASE CONTACT PAUL BALLAS AT 651-500-3201

TO ENSURE THAT THE PAINT IS THE CORRECT PRODUCT AND COLOR, BUILD-A-BEAR REQUIRES THAT ALL ORDERS MUST BE PLACED THROUGH BENJAMIN MOORE'S NATIONAL ACCOUNTS PROGRAM. THIS CENTRALIZED ORDERING PROGRAM IS DESIGNED TO ASSURE BUILD-A-BEAR THAT BENJAMIN MOORE PRODUCTS WILL BE READILY AVAILABLE ON SPEC AND ON TIME WITH CONSISTENT PRICING UTILIZING 5,000+ LOCALLY-OWNED BENJAMIN MOORE RETAIL AND COMMERCIAL OUTLETS THROUGHOUT NORTH AMERICA.

ITEM	DESCRIPTION	SPECIFICATION	MANUFACTURER	SUPP. BY	INST. BY	REMARKS
ACT1	2x4 ACOUSTIC CEILING TILE FOR SALES AREA AND STOCK ROOM	MODEL #922 - FINE FISSURED 24" X 28" (OR APPROVED EQUAL)	ARMSTRONG	G.C.	G.C.	-WITH "HOLD-DOWN" CLIPS - 1 HOUR RATED IF REQUIRED BY CODE (SEE A2.0 FOR RATING REQTS) -CONFIRM SPECIFICATION IS COMPATIBLE WITH EXISTING GRID SYSTEM PRIOR TO PURCHASE AND INSTALLATION (IF APPLICABLE FOR PROJECT)
CG1	CORNERGUARD - 3/2"x3/2"x48"	SNOW WHITE VBG-01-8	JOHNSONITE	G.C.	G.C.	ADHESIVE SUPPLIED BY G.C.
FRP1	FIBER REINFORCED TOILET ROOM WALL PANELS	STANDARD FRP WITH PEBBLE SURFACE COLOR; NATURAL ALMOND	MARLITE	G.C.	G.C.	
PT1	PAINT	ULTRA SPEC SCUFF-X, EGG-SHELL / SATIN COLOR; EVENING WHITE 907	BENJAMIN MOORE	G.C.	G.C.	PT COLORS ARE AVAILABLE FROM BENJAMIN MOORE SUPPLIERS PER BUILD-A-BEAR WORKSHOP NATIONAL ACCOUNT FORMULA. SUBSTITUTIONS WILL NOT BE ACCEPTED.
PT2	PAINT	ULTRA SPEC SCUFF-X, EGG-SHELL COLOR; EVENING BLUE 2066-20	BENJAMIN MOORE	G.C.	G.C.	
PT3	PAINT	ULTRA SPEC 500, EGG-SHELL / FLAT NS36 COLOR; SUPER WHITE PM-1	BENJAMIN MOORE	G.C.	G.C.	
TS1	TRANSITION STRIP	RRS-28-C MEDIUM GREY	JOHNSONITE	G.C.	G.C.	FIELD CUT TO FIT DOOR WIDTH ADHESIVE SUPPLIED BY G.C.
TS2	TRANSITION STRIP	CRS-28-B MEDIUM GRAY	JOHNSONITE	G.C.	G.C.	
VCT1	VINYL COMPOSITION TILE 12x12	COLOR #S1861	ARMSTRONG IMPERIAL TEXTURE	G.C.	G.C.	CLEAN AND APPLY TWO COATS OF WAX PRIOR TO TURN-OVER - ADHESIVE SUPPLIED BY G.C.
VF1	PLANK FLOORING	DARK WOODGRAIN (CONFIRM WITH WALMART PROJECT MANAGER)	HAINES, JONES & CADBURY (HJC)	G.C.	G.C.	ENCAPSEAL SLAB SEALER, FLOORING, AND ADHESIVE SUPPLIED BY G.C. INSTALL PER MANUFACTURER'S RECOMMENDATIONS AND SPECS.
WB1	5" WALL BASE	DURA-TUFF BASE - COLOR: BLACK (CONFIRM WITH WALMART PROJECT MANAGER)	HAINES, JONES & CADBURY (HJC)	G.C.	G.C.	ADHESIVE SUPPLIED BY G.C.



BUILD-A-BEAR BENJAMIN MOORE PAINT PRICING*

BENJAMIN MOORE PRODUCT & FINISH	COLOR	1 GAL.	5 GAL.
485 ULTRA SPEC SCUFF-X EGG-SHELL	EVENING WHITE 907	\$39.99	\$199.95
485 ULTRA SPEC SCUFF-X SATIN	EVENING WHITE 907	\$39.99	\$199.95
486 ULTRA SPEC SCUFF-X EGG-SHELL	EVENING BLUE 2066-20	\$39.99	\$199.95
N536 ULTRA SPEC 500 EGG-SHELL NS36	SUPER WHITE PM-1	\$21.82	\$96.93
N536 ULTRA SPEC 500 FLAT NS36	SUPER WHITE PM-1	\$21.82	\$96.93
N534 ULTRA SPEC 500 PRIMER	WHITE	\$16.57	\$81.60

*PRICES SUBJECT TO CHANGE

ORDER INSTRUCTIONS

FOR THIS PROJECT, PAINT MUST BE PURCHASED THROUGH BENJAMIN MOORE'S NATIONAL ACCOUNTS PROGRAM. TO ORDER, PLEASE CONTACT THE BENJAMIN MOORE NATIONAL ACCOUNTS ORDER DEPARTMENT. THE ORDER WILL THEN BE FULFILLED BY YOUR LOCAL BENJAMIN MOORE DEALER. PLEASE PROVIDE THE FOLLOWING INFORMATION WHEN ORDERING:

- x BUILD-A-BEAR STORE LOCATION
- x PAINT SELECTION
- x PREFERRED BENJAMIN MOORE DEALER
- x INDICATE STORE DELIVERY OR PICK-UP BY CONTRACTOR FROM BENJAMIN MOORE STORE.

JOB PRICING

PLEASE USE THESE NATIONAL NEGOTIATED PRICES ON THE SPECIFIED PRODUCTS WHEN BIDDING. THE SPECIFICATION IS CLOSED WITH NO SUBSTITUTIONS.

FINISH SCHEDULE NOTES

- ALL FLOOR FINISHES AND FLOOR COVERINGS SHALL COMPLY WITH IBC SECTION 804.4.
- THE SMOKE DEVELOPMENT RATING FOR ALL FINISHES SHALL BE LESS THAN 450 IN ACCORDANCE WITH IBC SECTION 803.1.
- ALL WALL AND CEILING FINISHES SHALL MEET OR EXCEED CLASS 'B' RATING IN ACCORDANCE WITH IBC TABLE 803.9.
- INTERIOR TRIM NOT IN EXCESS OF 10% OF THE AGGREGATE SURFACE AREA SHALL BE MINIMUM CLASS 'C' IN ACCORDANCE WITH IBC SECTION 806.5.
- WHEN PRODUCT DATA IS READILY AVAILABLE, FLOOR FINISHES SHALL HAVE A MINIMUM 0.5 STATIC COEFFICIENT OF FRICTION AS RECOMMENDED BY OSHA, THE ACCESSIBLE ROUTE SHALL HAVE A MINIMUM 0.6 COEFFICIENT, AND RAMPS SHALL HAVE A MINIMUM 0.8 COEFFICIENT AS RECOMMENDED BY THE ATCB (ACCESS BOARD).
- ALL PAINTED SALES AREA SOFFIT AND CEILING SURFACES (INCLUDING ACCESS PANELS) SHALL RECEIVE EGG-SHELL FINISH U.N.O. - ALL PAINTED WALL SURFACES SHALL RECEIVE EGG-SHELL FINISH U.N.O., ALL PAINTED DOOR AND DOOR FRAME SURFACES SHALL RECEIVE SATIN FINISH U.N.O. - ALL PAINTED EXTERIOR AND INTERIOR STOREFRONT SURFACES SHALL RECEIVE SATIN FINISH U.N.O.

20 - SCALE: -

19 - SCALE: -

PAINT ORDER INFORMATION

FINISH SCHEDULE

Artifex design studio
 architects

Artifex Design Studio, Inc.
 1215 Fern Ridge Pkwy
 Suite 210
 St Louis, MO 63141
 p. 314-390-1945

COPYRIGHT © 2019
 Artifex Design Studio, Inc.

PROFESSIONAL SEAL

CONSULTANTS:

PROJECT TITLE:
 BUILD-A-BEAR WORKSHOP
 WOODSTOCK WALMART #5275
 WOODSTOCK, GA

BID SET

No.	Date	Revision	Description
BY:			PCJ
DATE:			04/01/19
PROJ. NO.:			19026
SHEET TITLE:			SCHEDULES AND DETAILS
SHEET NO.:			C3.0

NOT ALL FINISHES MAY BE USED ON THIS PROJECT