



PANDA EXPRESS, INC.  
1683 Walnut Grove Ave.  
Rosemead, California  
91770  
Telephone: 626.799.9898  
Facsimile: 626.372.8288

All ideas, designs, arrangement and plans indicated or represented by this drawing are the property of Panda Express Inc. and were created for use on this specific project. None of these ideas, designs, arrangements or plans may be used by or disclosed to any person, firm, or corporation without the written permission of Panda Express Inc.

REVISIONS:


ISSUE DATE:

1st	ISSUE FOR PERMIT	11-30-18
-----	------------------	----------

DRAWN BY: RR

PANDA PROJECT # S8-19-D6559  
ARCH PROJECT # 1805

Project No.  
PE1805  
**Kurzynske & Associates**  
CONSULTING ENGINEERS  
2900 Lebanon Pike  
Suite 201  
Nashville, Tennessee 37214



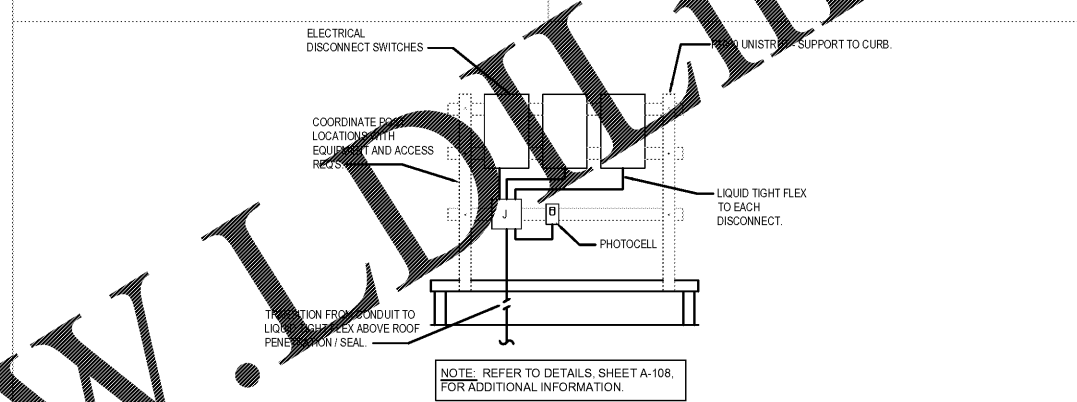
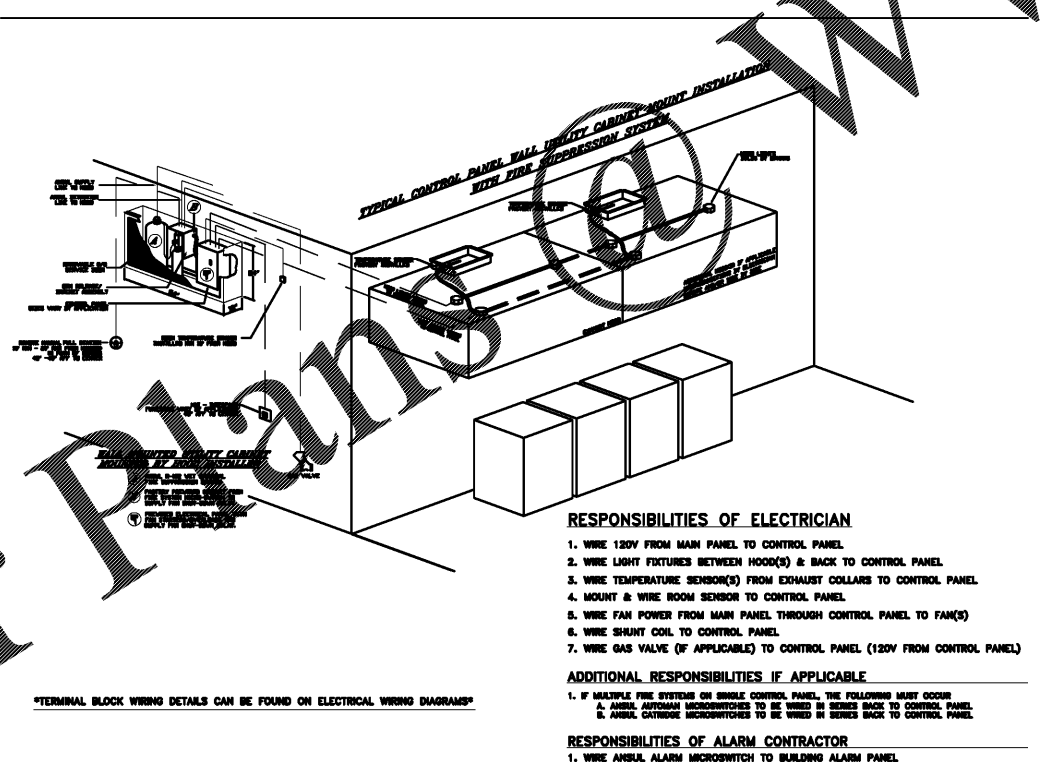
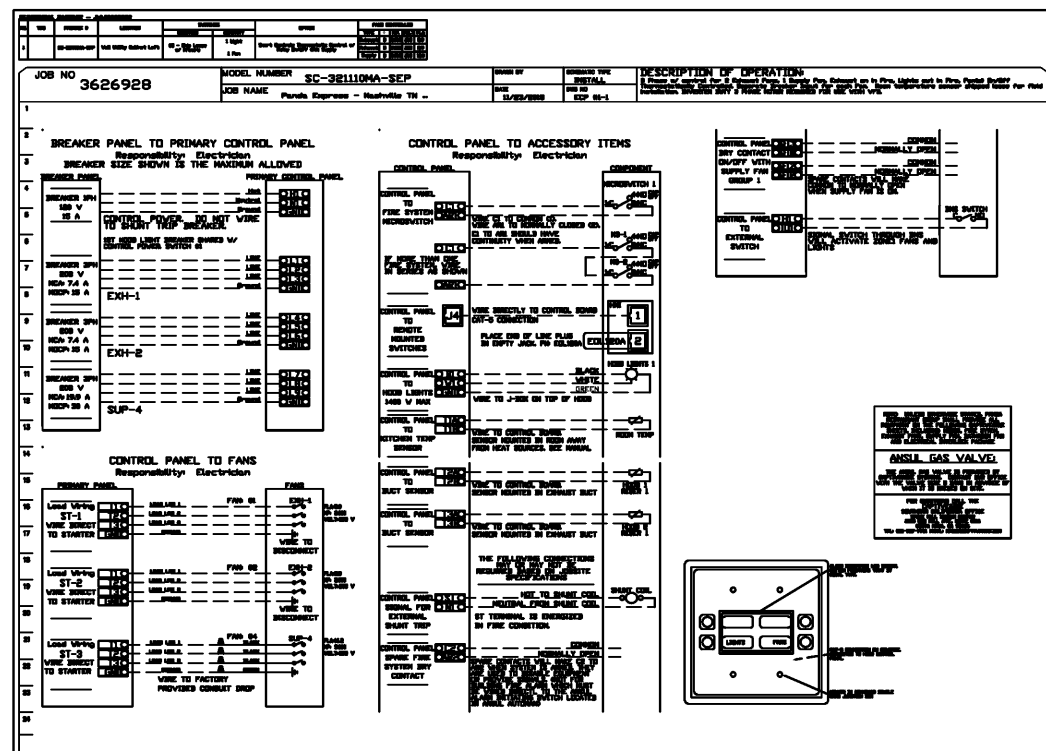
11-30-18

**PANDA EXPRESS**  
ELM HILL PIKE AT DONELSON PIKE  
2740 ELM HILL PIKE  
NASHVILLE, TN 37214

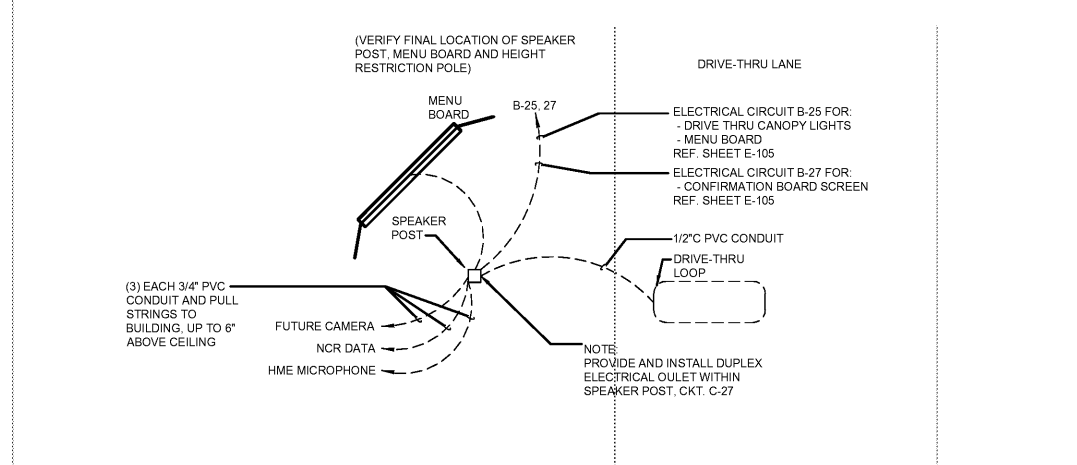
2200 TRUE R1 (DAB 013)

**E-401**

ELECTRICAL DETAILS, DIAGRAMS



EQUIPMENT DISCONNECT SWITCH SUPPORT 2  
NOT TO SCALE E-401



MENU BOARD & SENSOR LOOP 1  
NOT TO SCALE E-401

KITCHEN EXHAUST SYSTEM DIAGRAM 3  
NOT TO SCALE E-401

Order Plans

WWW.IDIline.com