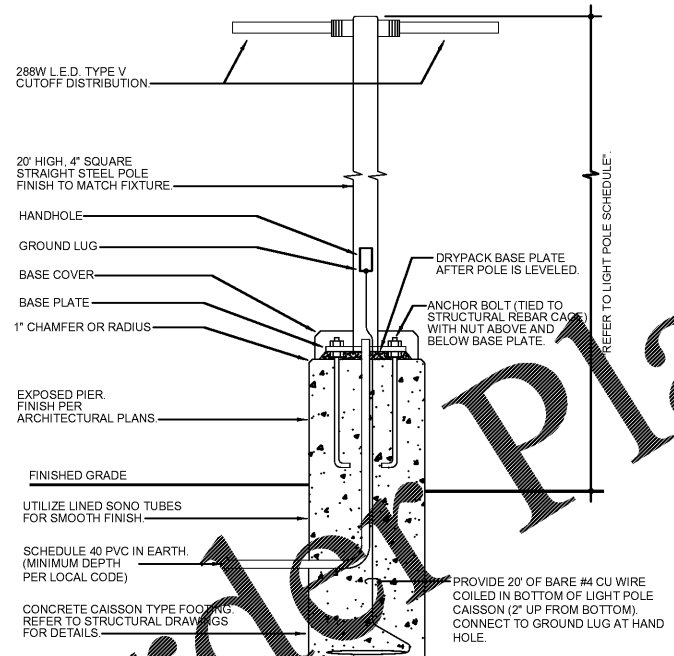


- COORDINATE SERVICE ENTRANCE SECTION, TRANSFORMER, PRIMARY SERVICE, SECONDARY SERVICE, AND SWITCHING CABINET OR POWER POLE LOCATIONS WITH SERVING UTILITY COMPANY AND COMPLY AS REQUIRED.
- CONTRACTOR TO BE RESPONSIBLE FOR COORDINATING AND PROVIDING REQUIRED WORK FOR SUPPLYING ELECTRICAL POWER AND TELEPHONE UTILITIES TO THE BUILDING.
- CONTRACTOR TO PROVIDE ALL TRENCHING, BACKFILL, CONDUIT, PAD, ETC. PER THE SERVING UTILITY COMPANY SHOP DRAWINGS AND SPECIFICATIONS.
- NOT USED.
- MINIMUM CIRCUITRY THIS SHEET TO BE #10, 3/4" CONDUIT.

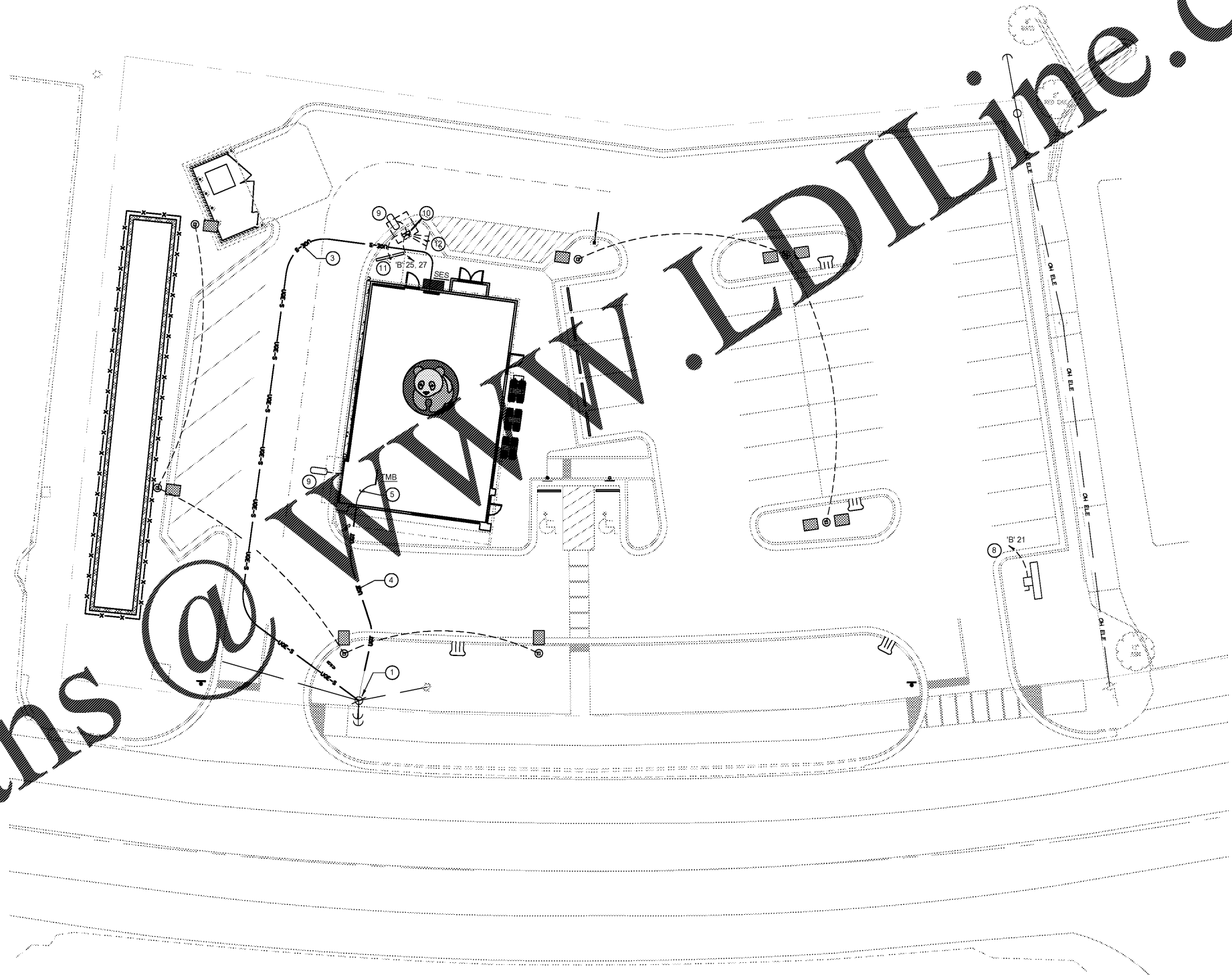
SITE PLAN GENERAL NOTES 2
E-105

- UTILITY CO. POLE MOUNT TRANSFORMER, FIELD VERIFY EXACT LOCATION.
- NOT USED.
- UTILITY CO. SECONDARY, PROVIDE (2) 3" CONDUITS OR AS DIRECTED BY THE UTILITY COMPANY REQUIREMENTS. SEE SINGLE LINE DIAGRAM.
- UNDERGROUND TELCO. SERVICE, PROVIDE CONDUITS BASED ON TELEPHONE COMPANY REQUIREMENTS. CONNECT TO TELCO. PRIMARY SERVICE. COORDINATE EXACT ROUTING AND CONNECTION IN FIELD.
- TELEPHONE CONDUIT TO TURN UP IN FURRED WALL TO ABOVE CEILING AND OVER TO THE TMB ABOVE THE MANAGER STATION.
- COMBINE MULTIPLE HOMERUNS IN J-BOX ADJACENT PANEL. FEED THROUGH LIGHTING CONTACTOR. REF. 11/E-400.
- NOT USED.
- STUB UP LOCATION FOR PYLON SIGN OR MONUMENT SIGN. ELECTRICAL CONTRACTOR TO PROVIDE DISCONNECT AT BASE OF SIGN. COORDINATE EXACT LOCATION WITH ARCHITECT/OWNER. CONNECT TO EXTERIOR BUILDING SIGN TIMER CONTROL.
- DRIVE-THRU SENSOR LOOP. COORDINATE LOCATION. REFER TO DETAIL 1 / E-401.
- STUB-UP FOR DRIVE-THRU ORDER CONFIRMATION MONITOR. COORDINATE LOCATION WITH ARCHITECT / OWNER.
- STUB-UP LOCATION FOR MENU BOARD. SIGN DISCONNECT PROVIDED BY SIGN CONTRACTOR. COORDINATE PRECISE LOCATION WITH ARCHITECT / OWNER.
- STUB-UP LOCATION FOR (3) 3/4" CONDUITS & PULL STRINGS, TO ENTER BUILDING & UP TO 6" ABOVE CEILING. REFER TO SHEET 1 / E-401.

SITE PLAN KEYED NOTES 3
E-105



POLE MOUNTING DETAILS 4
NO SCALE E-106



SITE & EXTERIOR LIGHTING PLAN 1
1" = 16'-0" E-105



PANDA EXPRESS, INC.
1683 Walnut Grove Ave.
Rosemead, California
91770
Telephone: 626.799.9898
Facsimile: 626.372.8288

All ideas, designs, arrangement and plans indicated or represented by this drawing are the property of Panda Express Inc. and were created for use on this specific project. None of these ideas, designs, arrangements or plans may be used by or disclosed to any person, firm, or corporation without the written permission of Panda Express Inc.

REVISIONS:

ISSUE DATE:
1st ISSUE FOR PERMIT 11-30-18

DRAWN BY: RR
PANDA PROJECT # S8-19-D6559
ARCH PROJECT # 1805

Project No.
PE1805
Kurzynske & Associates
CONSULTING ENGINEERS
2900 Lebanon Pike
Suite 201
Nashville, Tennessee 37214



11-30-18

PANDA EXPRESS
ELM HILL PIKE AT DONELSON PIKE
2740 ELM HILL PIKE
NASHVILLE, TN 37214
2200 TRUE R1 (DAB 013)

E-105
HOT - MEDIUM
SITE & EXTERIOR LIGHTING PLAN