

NO.	TAG	PACKAGE #	LOCATION	SWITCHES		OPTION	FANS CONTROLLED				
				LOCATION	QUANTITY		TYPE	HP	VOLTS	FLA	
1		SC-32110MA-SEP	Wall Utility Cabinet Left	08 - Ship Loose w/ Prewire	1 Light 1 Fan	Smart Controls Thermostatic Control w/ Relay On/Off with Supply	Exhaust	3	5,000	208	5.9
							Supply	3	5,000	208	15.0

JOB NO
3626928

MODEL NUMBER
SC-32110MA-SEP

DRAWN BY
DATE
11/23/2018

SCHEMATIC TYPE
INSTALL
DWG NO
ECP #1-1

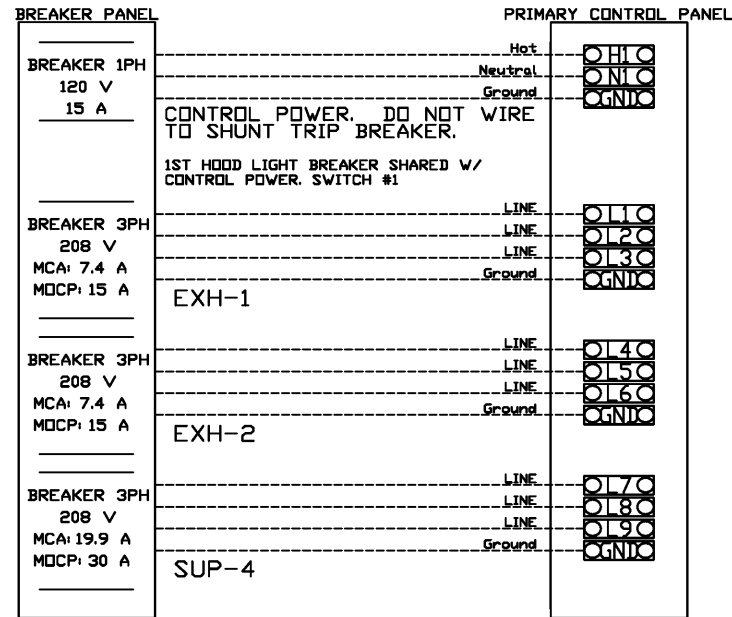
DESCRIPTION OF OPERATION:
3 Phase w/ control for 2 Exhaust Fans, 1 Supply Fan, Exhaust on in Fire, Lights out in Fire, Fan(s) On/Off Thermostatically Controlled. Separate Breaker Input for each Fan. Room temperature sensor shipped loose for field installation. INVERTER DUTY 3 PHASE MOTOR REQUIRED FOR USE WITH VFD.

JOB NAME
Panda Express - Nashville TN ...

BREAKER PANEL TO PRIMARY CONTROL PANEL

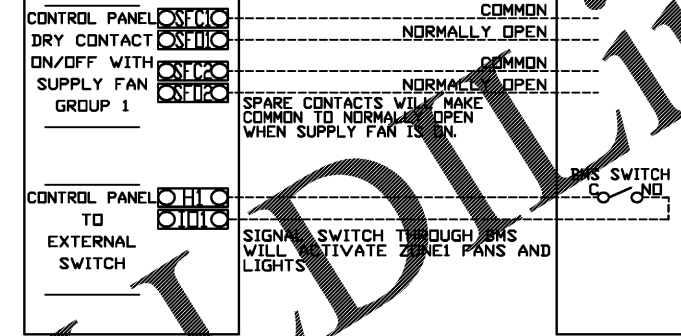
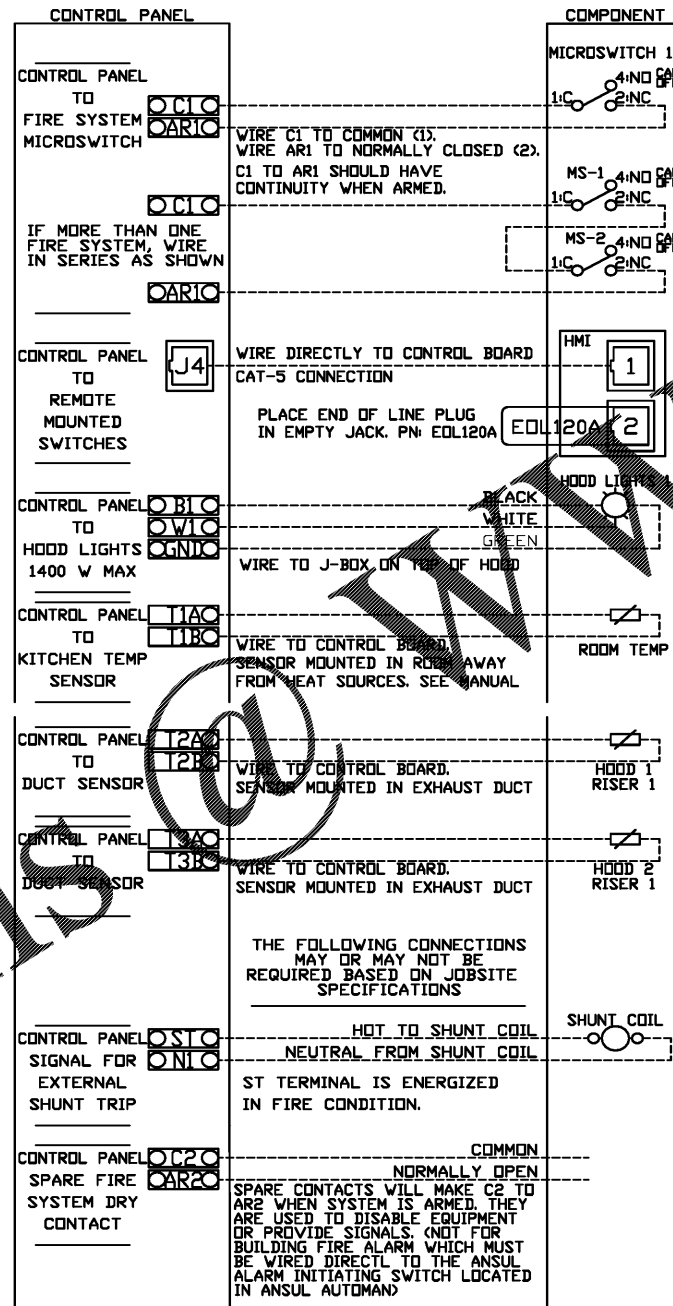
Responsibility: Electrician

BREAKER SIZE SHOWN IS THE MAXIMUM ALLOWED



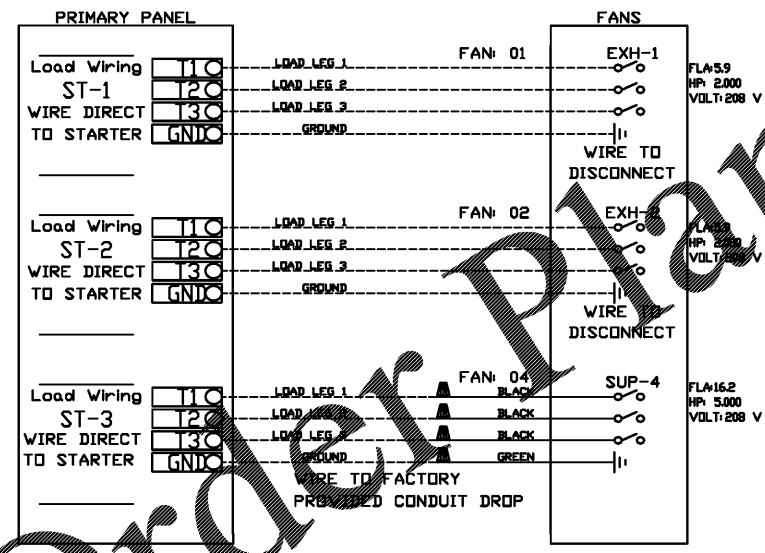
CONTROL PANEL TO ACCESSORY ITEMS

Responsibility: Electrician



CONTROL PANEL TO FANS

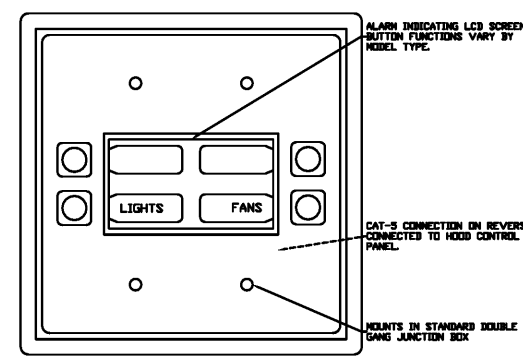
Responsibility: Electrician



NOTE: UNLESS OTHERWISE STATED, PANDA RESTAURANT GROUP SHALL PROVIDE ALL EQUIPMENT ON THE FOLLOWING CAPTIVEAIRE SHEETS, INCLUDING: HOODS, FIRE SYSTEM, EXHAUST FANS, SUPPLY FAN, BATHROOM FAN AND ELECTRICAL INTERLOCK PACKAGE.

ANSUL GAS VALVE:
THE ANSUL GAS VALVE IS PROVIDED BY CAPTIVEAIRE SYSTEMS. CONTACT OUR OFFICE WITH THE VALVE SIZE 3 DAYS IN ADVANCE OF WHEN IT IS NEEDED ON SITE.

FOR QUESTIONS CALL THE CAPTIVEAIRE SOUTHERN CALIFORNIA OFFICE STONE HILL DESIGN CENTER 2915 RED HILL AVE, SUITE C106 COSTA MESA, CA 92626 TEL: 800-967-7771 EMAIL: RES@CAPTIVEAIRE.COM



REVISIONS

DATE: 11/23/2018

NO. 0

DESCRIPTION: 3626928

DRAWN BY: AHJ-86

SCALE: 3/4" = 1'-0"

MASTER DRAWING

SHEET NO. 6



PANDA EXPRESS, INC.
1683 Walnut Grove Ave.
Rosemead, California 91770
Telephone: 626.799.9898
Facsimile: 626.372.8288

All ideas, designs, arrangement and plans indicated or represented by this drawing are the property of Panda Express Inc. and were created for use on this specific project. None of these ideas, designs, arrangements or plans may be used by or disclosed to any person, firm, or corporation without the written permission of Panda Express Inc.

REVISIONS:

NO.	DESCRIPTION	DATE
1	COORDINATION	11-28-18

ISSUE DATE:

COORDINATION 11-28-18

Project No. PE1805

Kurzynske & Associates
CONSULTING ENGINEERS
2900 Lakeside Pkwy Suite 201
Nashville, Tennessee 37214

DATE: 11/23/2018

NO. 0

DESCRIPTION: 3626928

DRAWN BY: AHJ-86

SCALE: 3/4" = 1'-0"

MASTER DRAWING

SHEET NO. 6

PANDA EXPRESS
ELM HILL PIKE AT DONELSON PIKE
2740 ELM HILL PIKE
NASHVILLE, TN 37214
2200 TRUE R1 (DAB 013)

M-405
HOOD DETAIL PLAN