



PANDA EXPRESS, INC.  
1683 Walnut Grove Ave.  
Rosemead, California  
91770  
Telephone: 626.799.9898  
Facsimile: 626.372.8288

All ideas, designs, arrangement and plans indicated or represented by this drawing are the property of Panda Express Inc. and were created for use on this specific project. None of these ideas, designs, arrangements or plans may be used by or disclosed to any person, firm, or corporation without the written permission of Panda Express Inc.

REVISIONS:

NO.	DESCRIPTION	DATE

ISSUE DATE:

NO.	DESCRIPTION	DATE
1st	COORDINATION	11-28-18

DRAWN BY: RR

PANDA PROJECT # S8-19-D6559  
ARCH PROJECT # 1805

Project No. PE1805

**Kurzynske & Associates**  
CONSULTING ENGINEERS  
2900 Lebanon Pike  
Suite 201  
Nashville, Tennessee 37214



**PANDA EXPRESS**  
ELM HILL PIKE AT DONELSON PIKE  
2740 ELM HILL PIKE  
NASHVILLE, TN 37214  
2200 TRUE R1 (DAB 013)

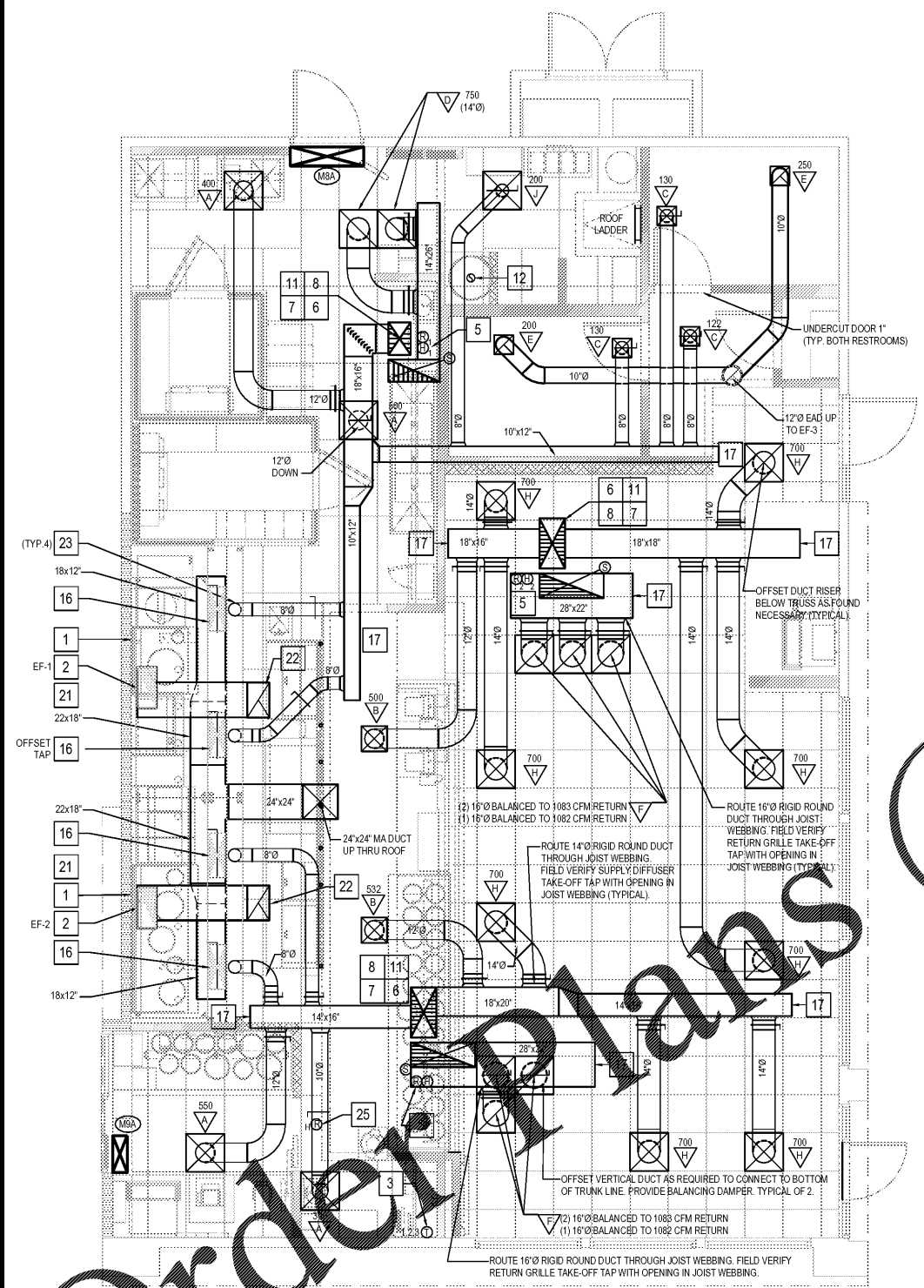
**M-100**  
H.V.A.C. FLOOR PLAN &  
H.V.A.C. ROOF PLAN

**MECHANICAL KEY NOTES:**

- 1 INSTALL GREASE EXHAUST HOODS FURNISHED BY PANDA. HOOD SHALL BE ONE CAPTIVEAIRE 48"X48" HOOD EXHAUSTING 3,450 CFM SUPPORT FROM STRUCTURE ABOVE WITH UNISTRUT AND ALL THREAD ROD MOUNT HOOD PER LOCAL CODE REQUIREMENTS. REFER TO PLAN FOR HOOD CONNECTIONS. SEE CODE COMPLIANCE DRAWINGS ON SHEET M-500 AND CAPTIVEAIRE HOOD DRAWINGS FOR ADDITIONAL REQUIREMENTS. (TWO SECTIONS TOTAL).
- 2 PROVIDE AND INSTALL GREASE EXHAUST DUCT, ROUTE ON TOP OF MAKE UP AIR FROM INLET OF ROOF MOUNTED GREASE EXHAUST FAN, TRANSITION TO 22"x14" BETWEEN ROOF JOIST, CONNECT TO EXHAUST HOOD COLLAR, FIELD VERIFY, WRAP WITH THERMAL CERAMIC FIREMASTER DUCT WRAP OR EQUAL. FABRICATE DUCT FROM 16 GAUGE STEEL WITH WELDED SEAM CONSTRUCTION SEAL TO THE ROOF CURB WITH FIRE CAULKING. SEE HOOD DETAIL DRAWINGS ON SHEET M-500 AND CAPTIVEAIRE DRAWINGS. TRANSITION TO 26"x12" DUCT COLLAR SIZE. TRANSITION TO 26"x12" DUCT COLLAR SIZE.
- 3 MOUNT THERMOSTAT AT MANAGER STATION. REFER TO DETAIL #1 ON SHEET M-200. SEE DWG FOR EXACT LOCATION OF REMOTE SENSOR. REFER TO DETAIL #1 ON SHEET M-200. SEE TEMPERATURE CONTROL DIAGRAM DETAIL 5 ON SHEET M-201 FOR ADDITIONAL INFORMATION.
- 4 INSTALL GREASE EXHAUST CURB (EF-1 AND EF-2) AND MAKE UP AIR (MA-1) FURNISHED BY PANDA. COORDINATE LOCATION WITH ARCHITECTURAL AND STRUCTURAL DRAWINGS.
- 5 PROVIDE AND INSTALL A REMOTE TEMPERATURE SENSOR AND REMOTE HUMIDISTAT FOR ROOFTOP UNIT. THIS LOCATION UNLESS NOTED OTHERWISE. MOUNT REMOTE SENSORS ON WALL OF RETURN AIR DUCT WITH BRACKET. SEE TEMPERATURE CONTROL DIAGRAM ON SHEET M-501 FOR ADDITIONAL INFORMATION. SENSORS SHALL BE ACCESSIBLE IN SOME FASHION, (ACCESS PANELS MAY BE REQ'D).
- 6 PROVIDE AND INSTALL DUCT MOUNTED SMOKE DETECTOR AT MAIN SUPPLY AIR DUCT PER MANUFACTURER 859 OR AT RETURN AIR DUCT PER IMC SECTION 606.2.1. DETECTORS SHALL BE INTERLOCKED TO SHUT DOWN ROOFTOP UNITS UPON DETECTION OF SMOKE. PROVIDE ALL CONTROL WIRING NECESSARY TO PERFORM THIS OPERATION.
- 7 PROVIDE FLEXIBLE CONNECTION BETWEEN UNIT, ROUTE DUCT THRU ROOF CURB AND TRUSS.
- 8 FOR GAS OR WATER CONNECTION, SEE PLUMBING DRAWINGS.
- 9 PROVIDE FABRICATED CURB PER MANUFACTURER'S REQUIREMENTS AND COORDINATE EXACT LOCATION OF UNIT IN FIELD. SHIM ROOF CURB LEVEL FOR PROPER CONDENSATE DRAINAGE.
- 10 FURNISH AND INSTALL ALL TEMPERATURE CONTROL WIRING FROM THE UNIT TO THE THERMOSTAT OR OTHER CONTROL DEVICES.
- 11 FULL SIZE SA AND RA UP TO RTU. TRANSITION AS REQUIRED TO RTU INLET/OUTLET SIZE.
- 12 5" TYPE 'B' VENT WITH BRIERT CAP PROVIDED AND INSTALLED BY PLUMBING FOR WATER HEATER. REFER TO PLUMBING PLANS.
- 13 WATER HEATER EXHAUST VENT WITH BRIERT CAP. REFER TO PLUMBING PLANS. OFFSET AS REQUIRED FOR CLEARANCE FROM AIR INTAKES.
- 14 ROOF HYDRANT. REFER TO PLUMBING DRAWINGS.
- 15 ROUTE CONDENSATE DRAIN IN CEILING SPACE OVER AND DOWN IN WALL. SLOPE 1/4" PER FOOT. STUB-OUT AND ELBOW DOWN OVER MOP SINK. TERMINATE WITH MINIMUM 2" AIR GAP.
- 16 MA DUCT (BELOW MAKE UP AIR) CONNECT TO 28"x10" RISER FROM SUPPLY PLENUM. 1,380 CFM
- 17 PROVIDE DUCT EXTERNAL INSULATION WRAP AT TRUNK, TYPICAL.
- 18 NOT USED.
- 19 1" CONDENSATE DRAIN LINE DOWN THRU ROOF. REFER TO DETAIL 16P-500.
- 20 NOT USED.
- 21 PROVIDE AND INSTALL ALL EQUIPMENT WITH MANUFACTURER'S RECOMMENDED CLEARANCES FOR MAINTENANCE. MAINTAIN MINIMUM CLEARANCES TO ELECTRICAL AND SERVICE ACCESS PANELS AND DISCONNECTS.
- 22 GREASE DUCT CLEANOUT LOCATION. PROVIDE ACCESS TO CLEANOUT ABOVE CEILING. REFER TO MECHANICAL SPECIFICATIONS SHEET M-000.
- 23 8" CONNECTION TO HOOD RTU SUPPLY PLENUM COLLAR. BALANCE TO 259 CFM. CONNECTION SHALL BE COMPOSED OF ROUND RIGID DUCTWORK. PER IMC 506.3.1.2. PROVIDE AND INSTALL NONCOMBUSTIBLE FIRE MASTER DUCT WRAP ON INDICATED MAKEUP AIR DUCTWORK WITHIN 18" OF HOOD. SEE SPECIFICATION NOTE #9 ON M-000 FOR INDICATED MAKEUP AIR DUCT INSULATION CONTINUING OUTSIDE OF 18" OF HOOD.
- 24 PROVIDE AND INSTALL ACR TUBING, SIZED AND ROUTED PER MANUFACTURER'S INSTRUCTIONS, FROM REMOTE REFRIGERANT CONDENSERS TO WALK-IN COOLER AND FREEZER FAN COILS, AND ICE MAKER. TEST, PURGE, EVACUATE AND CHARGE LINES AS REQUIRED BY MANUFACTURER. (START-UP FOR ICE MAKER IS BY OWNER'S REPRESENTATIVE). ROUTE REFRIGERANT LINES THROUGH "A TR HUB" PROVIDED AND INSTALLED BY GC (REFER TO ARCH. ISO 3 AND 4, SHEET A-108).
- 25 ROOM AIR SENSOR FROM CAPTIVEAIRE HOOD ON BACK OF MENU BOARD WALL, AS CLOSE TO CEILING AS POSSIBLE.

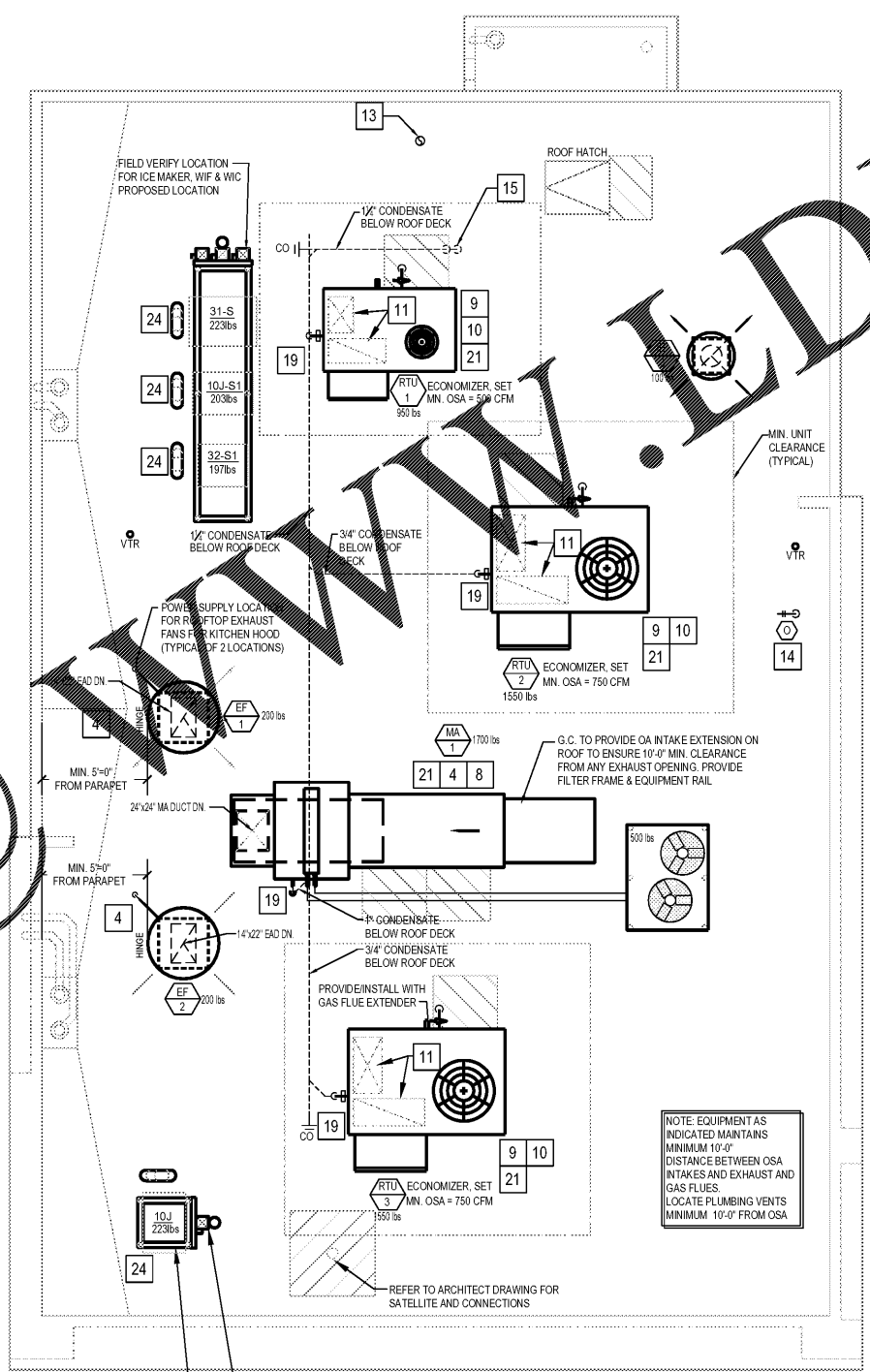
**GENERAL NOTES**

- MAXIMUM FLEXIBLE DUCT LENGTH ALLOWED SHALL BE 4 FEET. SEE DETAIL #6 ON SHEET M-501.
- ALL THERMOSTATS WILL BE LABELED WITH RTU # AND ROOM LOCATION WITH BLACK LETTERS ON CLEAR TAPE. (i.e. RTU-1 KITCHEN). SEE HVAC CONTROL SETTINGS ON SHEET M-000.
- PROVIDE LABELS ON ALL RTU, HVAC, MUA, CONDENSERS, EXHAUST FANS, DISCONNECTS, i.e. RTU-1, RTU-2, MUA, MUA COOLING, EF-1, EF-2, EF-3, ICE-DRIVE THRU, ICE-DINING ROOM, COOLER, FREEZER. (ON MALL OR MULTI TENANT BUILDINGS ADD FX IN FRONT OF EACH LABEL).



HVAC FLOOR PLAN 2

Scale: 1/4"=1'-0" M-100



HVAC ROOF PLAN 1

Scale: 1/4"=1'-0" M-100

Order Plans @