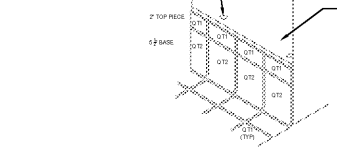


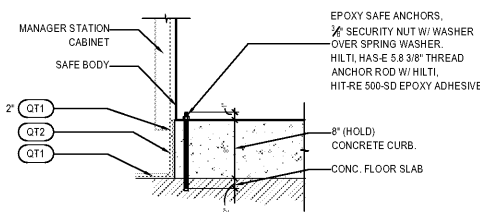
MANAGER CABINET STATION CURB SIZE REFER FLR. PLAN FOR LOCATION

8" H X 24" W (CONCRETE CURB ONLY, NOT INCLUDE TILE BASE); INSTALL TILE TO EXPOSED FACE

DRILL 1/2" HOLES THRU CURB INTO FLOOR SLAB. REFER SECTION DETAIL BELOW. HOLE LOCATIONS VARIES DEPEND ON SAFE MODEL. CHECK PANDA PM FOR SAFE MODEL.

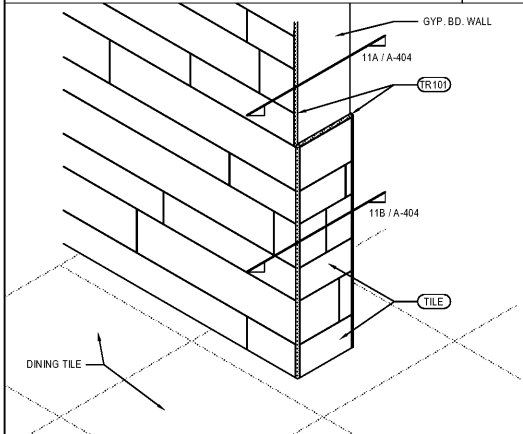


MANAGER STATION CABINET ENCLOSED BY 3 SIDE OF WALLS, TILE ONLY FRONT FACE OF CURB; NO TILE ON TOP OF CURB



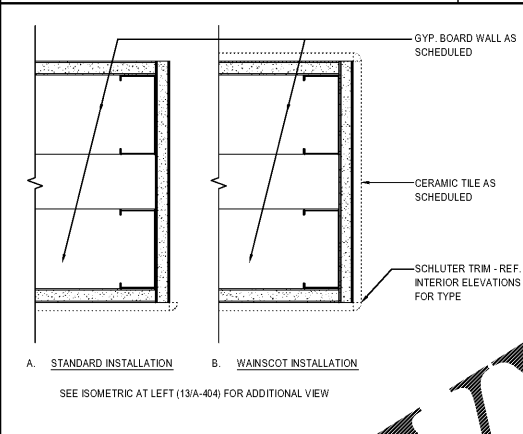
MGR. STATION & SAFE CURB 20  
Scale= 1 1/2" = 1'-0" A-404

NOT USED 14  
Scale= 3/4" = 1'-0" A-404



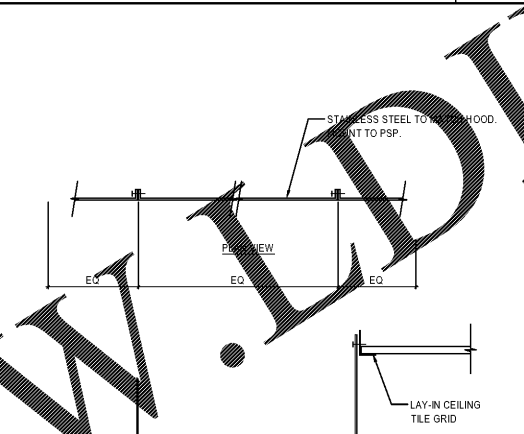
OUTSIDE CORNER ISOMETRIC 13  
Scale= 3/4" = 1'-0" A-404

15" CURB DETAIL (AT MOP SINK) 12  
Scale= 1 1/2" = 1'-0" A-404



PLAN SECTION WALL DETAIL 11  
Scale= 3" = 1'-0" A-404

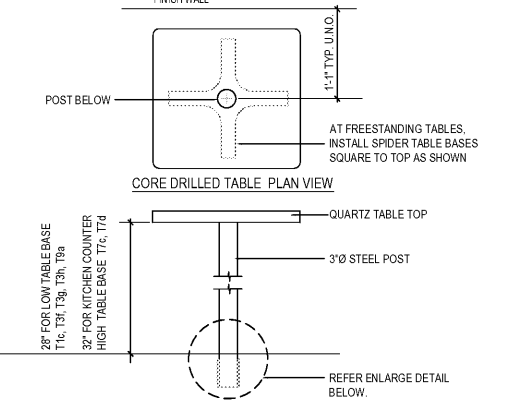
S.S. DETAIL @ COOLER / FREEZER 8  
Scale= 1/2" = 1'-0" A-404



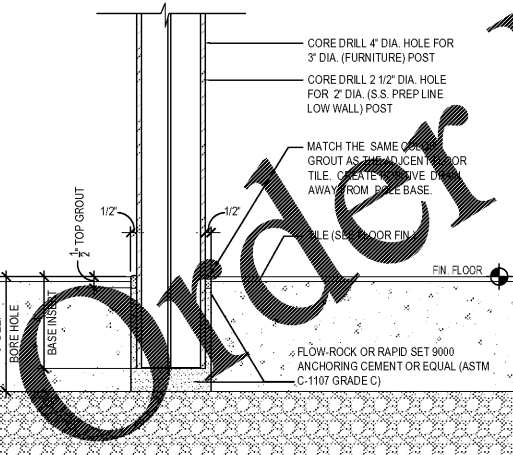
5 1/2" CURB DETAIL (COZ TANK) 4  
Scale= 1 1/2" = 1'-0" A-404



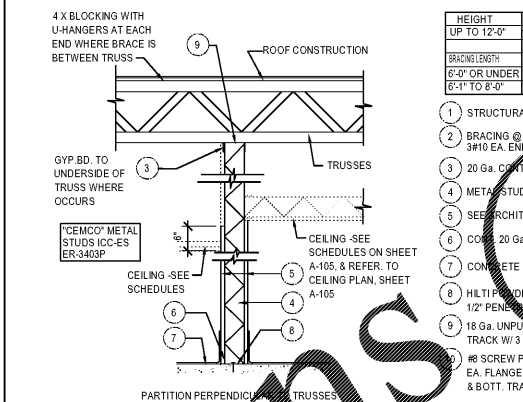
NOT USED 3  
Scale= 1 1/2" = 1'-0" A-404



NOTE:  
G.C. TO REFER CORE DRILL LOCATION ON SHEET A-109

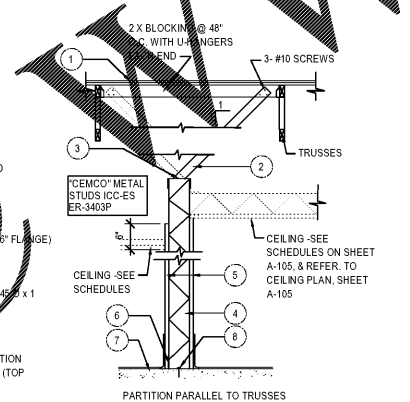


STANDARD CORE DRILL TABLE 17  
NTS A-404

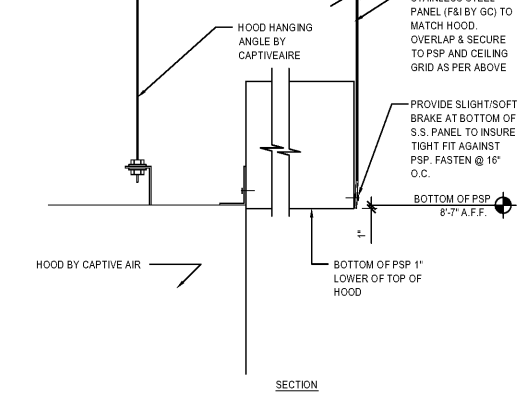


HEIGHT	METAL STUD SIZE & SPACING
UP TO 12'-0"	1/2" X 3/4" @ 20G @ 16" O.C.
BRACING LENGTH	SIZE
6'-0" OR UNDER	3/4" X 20G @ 4" X 20G @
6'-3" TO 8'-0"	4" X 20G @

- STRUCTURAL MEMBER ABOVE
- BRACING @ 4'-0" O.C. @ 16" O.C. END
- 20 GA. CONT. TRACK W/ 8# SCREW STUD
- METAL STUDS (SEE TABLE)
- SEE ARCHITECTURAL FOR FINISH
- CONC. 20 GA. UNFINISHED TRACK (1 1/2" FLANGE)
- CONCRETE SLAB
- HULTI UNDER LATCH FASTENER 1/2" X 1 1/2" PENETRATION @ 32" O.C. OR EQUIV.
- 18 GA. UNFINISHED 3" DEEP LEG TRACK W/ 3 #10 SCREWS
- #8 SCREW PER STUD TYPICAL CONNECTION EA. FLANGE OF STUD TO STEEL TRACK (TOP & BOTT. TRACK)



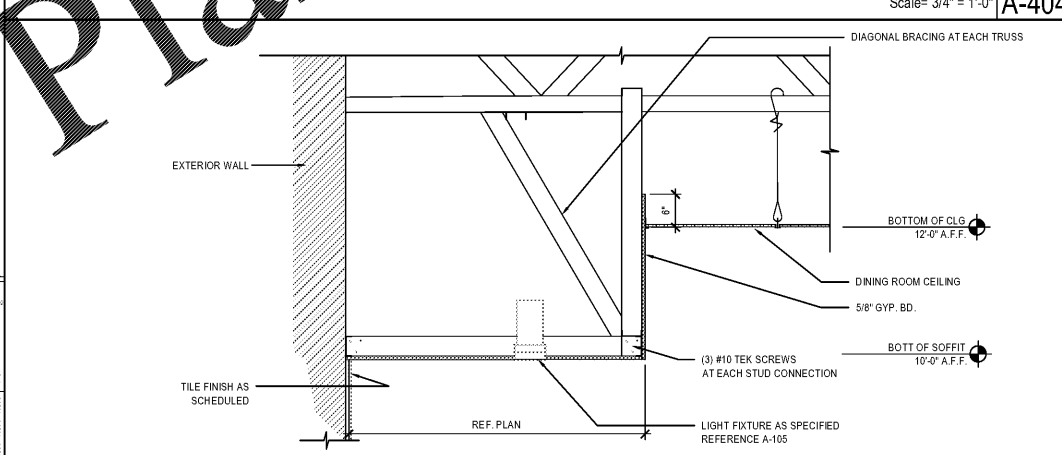
PARTITION DETAILS 10  
Scale= 3/4" = 1'-0" A-404



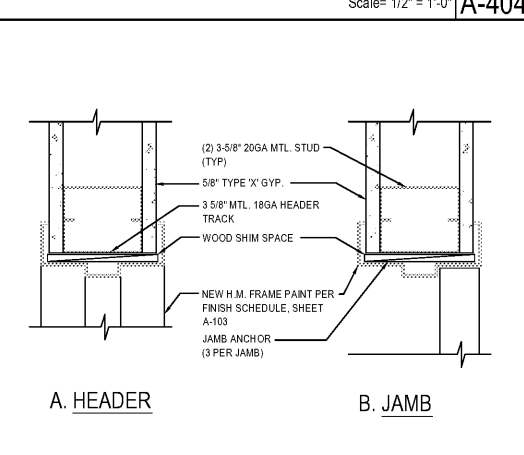
S.S. DETAIL @ EXHAUST HOOD 6  
Scale= 1/2" = 1'-0" A-404



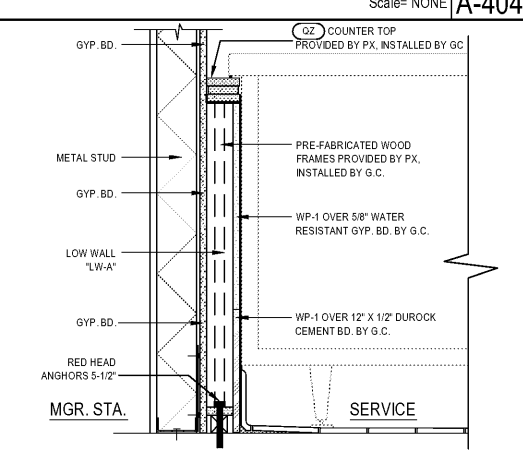
NOT USED 2  
Scale= NONE A-404



SOFFIT @ BEVERAGE COUNTER 9  
Scale= 3/4" = 1'-0" A-404



INTERIOR DOOR HEADER/JAMB 5  
Scale= 3" = 1'-0" A-404



SERVICE COUNTER END DETAIL 1  
Scale= 1 1/2" = 1'-0" A-404



PANDA EXPRESS, INC.  
1683 Walnut Grove Ave.  
Rosemead, California  
91770  
Telephone: 626.799.9898  
Facsimile: 626.372.8288

All ideas, designs, arrangement and plans indicated or represented by this drawing are the property of Panda Express Inc. and were created for use on this specific project. None of these ideas, designs, arrangements or plans may be used by or disclosed to any person, firm, or corporation without the written permission of Panda Express Inc.

REVISIONS:

NO.	DESCRIPTION	DATE

ISSUE DATE:

NO.	ISSUE FOR PERMIT	DATE
1st		11-30-18

DRAWN BY: RR  
PANDA PROJECT # S8-19-D6559  
ARCH PROJECT # 1805



315 WALTER ROBERTS ST • FRANKLIN, TN 37064  
PHONE (615) 496-8750 • FAX (666) 584-1225



PANDA EXPRESS  
2740 ELM HILL PIKE  
NASHVILLE, TN 37214

2200 TRUE R1 (DAB 013)

A-404  
ARCHITECTURAL  
DETAILS