



PANDA EXPRESS, INC.
1683 Walnut Grove Ave.
Rosemead, California
91770
Telephone: 626.799.9898
Facsimile: 626.372.8288

All ideas, designs, arrangement and plans indicated or represented by this drawing are the property of Panda Express Inc. and were created for use on this specific project. None of these ideas, designs, arrangements or plans may be used by or disclosed to any person, firm, or corporation without the written permission of Panda Express Inc.

REVISIONS:

ISSUE DATE:

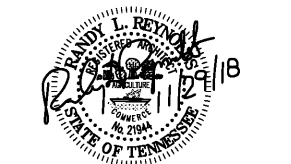
101	ISSUE FOR PERMIT 11-30-18

DRAWN BY: RR

PANDA PROJECT # S8-19-D6559
ARCH PROJECT # 1805



315 WALTER ROBERTS ST • FRANKLIN, TN 37064
PHONE (615) 496-8750 • FAX (666) 584-1285

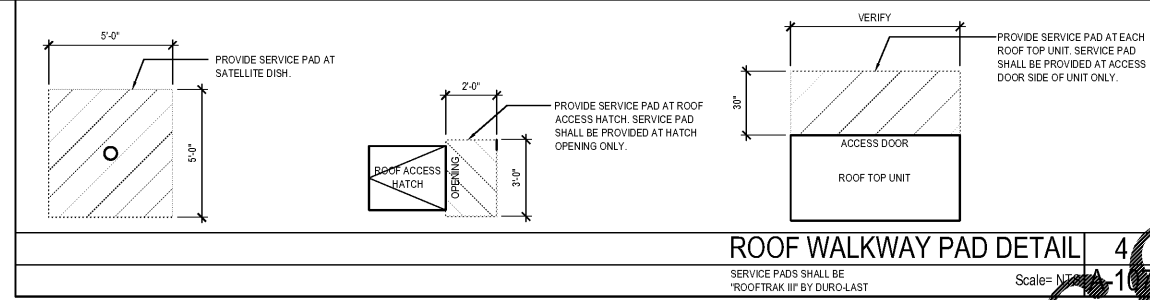


PANDA EXPRESS
ELM HILL PIKE AT DONELSON PIKE
2740 ELM HILL PIKE
NASHVILLE, TN 37214

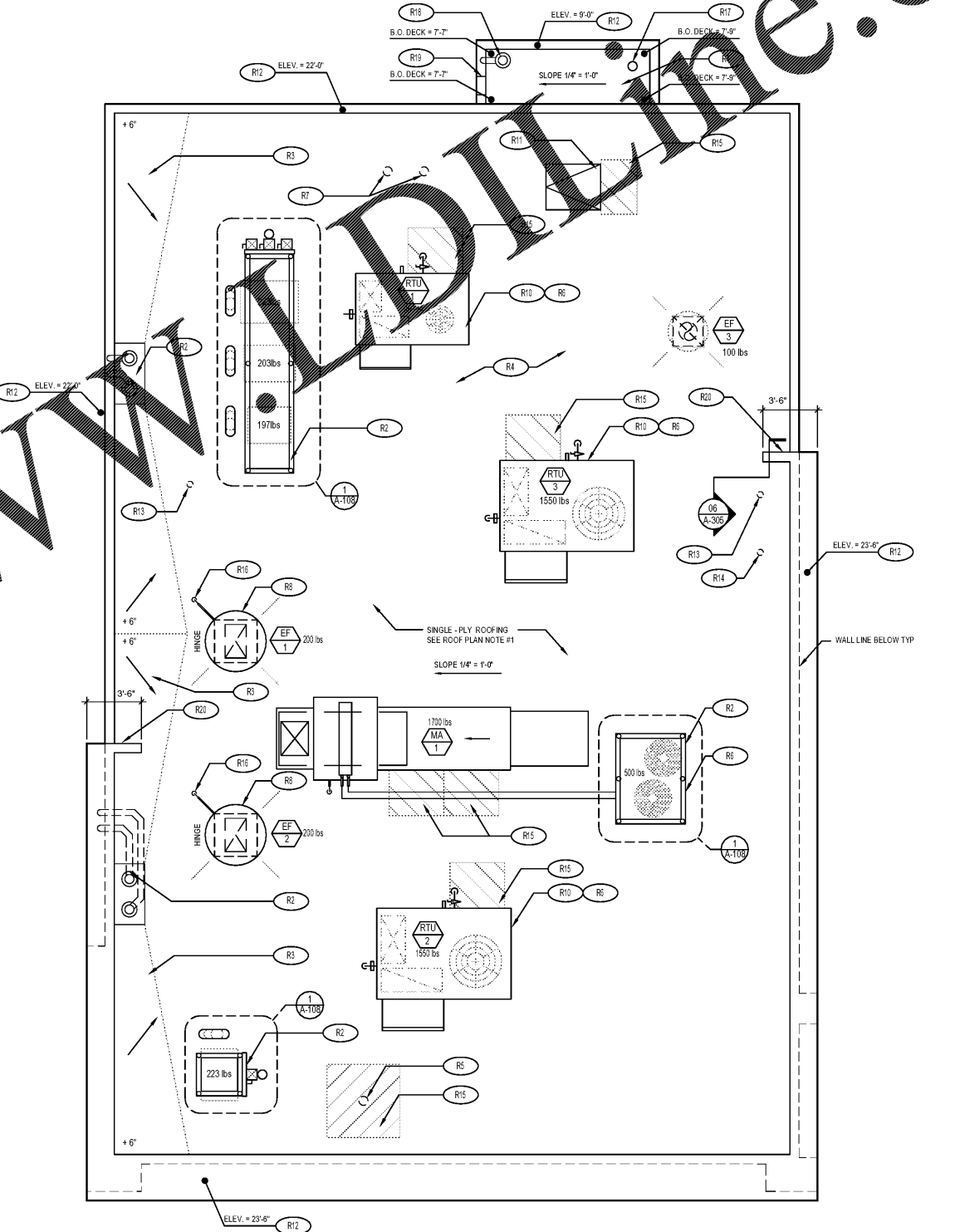
2200 TRUE R1 (DAB 013)

A-107

ROOF PLAN



ROOF WALKWAY PAD DETAIL 4
Scale: NTS A-107
SERVICE PADS SHALL BE "ROOFTRAK III" BY DURO-LAST

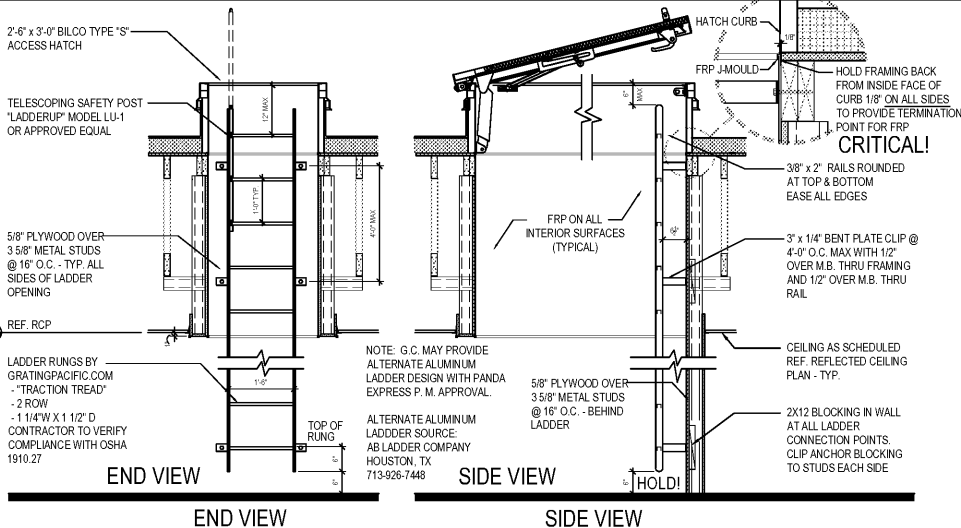


ROOF PLAN NOTES:

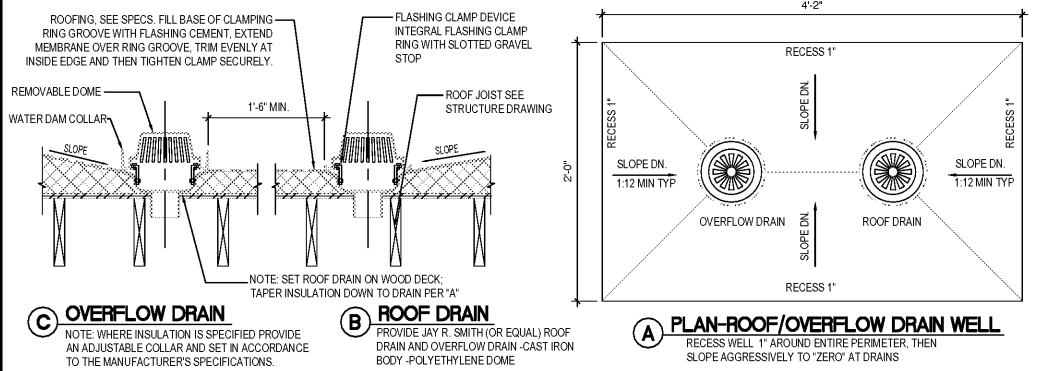
- WHITE, SINGLE-PLY, PVC 40MIL MECHANICALLY FASTENED ROOF MEMBRANE, AS MANUFACTURED BY DURO-LAST ROOFING, INC. NO ALTERNATES WILL BE ACCEPTED. PROVIDE STANDARD 15 YEAR WARRANTY.
- 4'6" INDICATES APPROXIMATE ELEVATION OF THE TOP OF ROOF PLYWOOD SHEATHING AT PLYWOOD CRICKET. SEE TRUSS DRAWINGS FOR ACTUAL ROOF SLOPE. ALL ROOF ELEVATIONS ARE GIVEN FROM TOP OF INTERIOR CONCRETE FLOOR SLAB (U.O.N.).
- ANY PROJECTION THROUGH ROOF SHALL BE DETAILED PER THE SINGLE PLY ROOFING MANUFACTURER'S RECOMMENDED DETAILS.
- ALL EXHAUST FANS AND AIR CONDITIONING EQUIPMENT DESIGNATIONS ARE TAKEN FROM MECHANICAL DRAWINGS.
- NOT USED.
- CONTRACTOR SHALL CONFIRM THAT ALL AREAS OF ROOF ARE PROVIDED WITH POSITIVE DRAINAGE.
- ALL ROOF PENETRATIONS FOR PLUMBING VENTS, POWER CONDUITS, ETC. SHALL BE FLASHED PER BUILDING SPECIFICATIONS AND DETAILS. VENTS SHALL BE AT LEAST 10'-0" HORIZONTAL OR 3'-0" ABOVE OUTSIDE AIR INTAKES (AC UNITS, MAKE-UP AIR).
- CONTRACTOR BE RESPONSIBLE FOR COORDINATION OF SIZES AND LOCATIONS OF ROOF OPENINGS (VENTS, DUCTS, ETC.). SPECIFICATIONS AND DETAILS. COORDINATE SIZES OF MECHANICAL EQUIPMENT PLATFORMS, BASES, ROOF EQUIPMENT PLATFORMS AND OPENINGS SHOWN ON DRAWINGS WITH EQUIPMENT BEING SUPPLIED. SEE TYPICAL DETAILS ON THIS SHEET ALSO COORDINATE INSTALLATION OF LIGHTING, POWER, CONVENIENCE OUTLETS ETC.
- FOR ALL STRUCTURAL FRAMING MEMBERS, SIZES, AND ADDITIONAL INFORMATION, SEE STRUCTURAL DRAWINGS.
- PROVIDE ROOF CRICKET AT MECHANICAL EQUIPMENT TO ASSURE POSITIVE ROOF DRAIN.
- ALL ROOF EQUIPMENT TO BE SCREENED FROM PUBLIC VIEW.
- ROOFTOP EQUIPMENT TO BE LOCATED AT LEAST MINIMUM FROM TOWERS FOR SERVICING.
- PROVIDE SERVICE PAD AT EACH UNIT ONLY AT SERVICE ACCESS DOOR.
- ALL GAS PIPING ON ROOF TO BE PAINTED POLY-YELLOW.
- ALL VENT STACKS SHALL BE PAINTED TO ALIQUOT WITH PARAPET TYPICAL.

ROOF PLAN KEYNOTES:

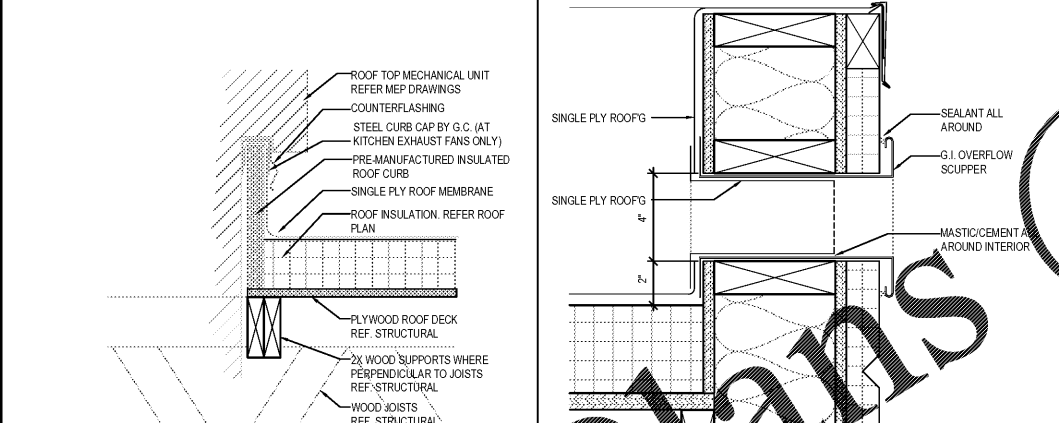
- R1 REF. EQUIPMENT TRACK (SEE SHEET A-108)
- R2 ROOF DRAIN AND OVERFLOW DRAIN (15 A-107)
- R3 PROVIDE CRICKET TO ASSURE POSITIVE ROOF DRAINAGE
- R4 SINGLE-PLY ROOFING SEE ROOF PLAN NOTE #1
- R5 GALV RIGID METAL CONDUIT & WEATHERHEAD AND PULL STRING FOR SATELLITE CABLE. EXACT LOCATION ON ROOF TO BE COORDINATED WITH PANDA PROJECT MANAGER AND SERVICE PROVIDER. REFER TO E-104A-108 FOR SIZE AND INSTALLATION.
- R6 ROOF TOP MECHANICAL UNIT SEE MECHANICAL DRAWING
- R7 WATER HEATER VENT - SEE MEP PLANS. OFFSET VENTS AS REQUIRED TO MAINTAIN MIN. 10'-0" AWAY FROM AIR INTAKE SYSTEMS ON EQUIPMENT.
- R8 EXHAUST FAN
- R9 MECHANICAL UNIT CURB. SEE DETAIL 18A-107 AND MECHANICAL DRAWINGS.
- R10 ROOF ACCESS HATCH LOCATE BETWEEN 2 ADJACENT TRUSSES (16 A-107)
- R11 TOP OF PARAPET. COPING IS PRE-FINISHED AND PURCHASED BY G.C. THROUGH DURO-LAST.
- R12 PLUMBING VENT (13 A-107)
- R13 WEATHER PROOF HYDRANT
- R14 PROVIDE WALK-WAY PAD AS SHOWN. REFERENCE DETAIL 4A-107
- R15 POWER SUPPLY LOCATION FOR ROOFTOP EXHAUST FANS FOR KITCHEN HOOD
- R16 ATTIC / ROOF CONVECTION VENT WITH WEATHER CAP AND INSECT SCREEN
- R17 4" ROOF DRAIN. REFERENCE PLUMBING DRAWINGS
- R18 OVERFLOW SCUPPER. REFERENCE DETAIL 14A-107
- R19 RETURN EXTERIOR FINISHES AROUND PARAPET RETURNS AND TERMINATE PER MANUFACTURER'S WRITTEN INSTRUCTIONS
- R20



ROOF ACCESS LADDER DETAIL 16
Scale: 1/4" = 1'-0" A-107

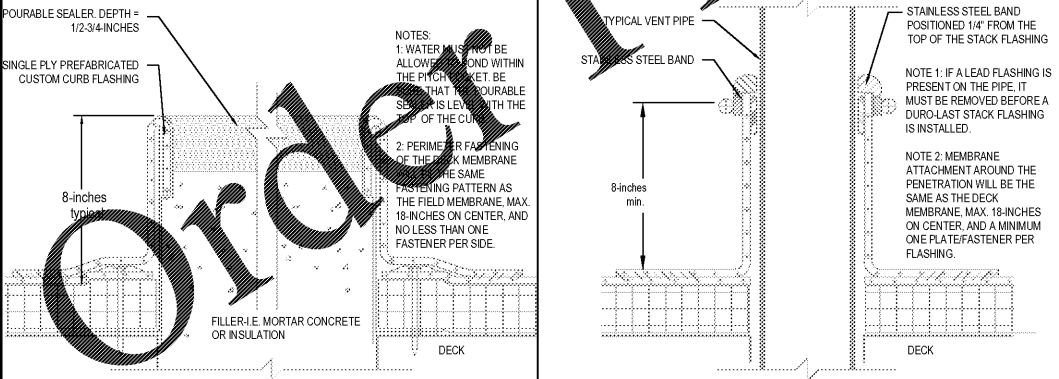


ROOF DRAIN DETAIL 15
Scale: NTS A-107



MECHANICAL CURB DETAIL 18
Scale: NTS A-107

SCUPPER DETAIL 14
Scale: 3" = 1'-0" A-107



PITCH POCKET DETAIL 17
Scale: NTS A-107

PLUMBING VENT DETAIL 13
Scale: NTS A-107

ROOF PLAN 1
Scale: 1/4" = 1'-0" A-107