

ROOM NAME	FLOOR	BASE	WALL	CEILING
100 DINING ROOM	T200 24" X 24" TILE	T109 6" X 48" TILE	P101 P104 T109 W102	C1 2' X 2' ARMSTRONG, SEPIA #N61311
101 SERVING AREA	QT 8" X 8" CONT. QUARRY TILE	QT2 6" X 12" CONT. 1/8" RAD. MIN (KITCHEN EQUIPMENT ON 6" NSF APPROVED LEGS)	T109 TILE	C3 GYP BOARD W/ PAINT P103
102 DRIVE-THRU STATION	QT 8" X 8" CONT. QUARRY TILE	QT2 6" X 12" CONT. 1/8" RAD. MIN (KITCHEN EQUIPMENT ON 6" NSF APPROVED LEGS)	WP1 FRP PANEL	C2 2' X 4' SUSPENDED GRID WASHABLE VINYL COATED GYP BOARD PANELS
103 KITCHEN	QT 8" X 8" CONT. QUARRY TILE	QT2 6" X 12" CONT. 1/8" RAD. MIN (KITCHEN EQUIPMENT ON 6" NSF APPROVED LEGS)	WP3 S.S. BEHIND COOK LINE	C2 2' X 4' SUSPENDED GRID WASHABLE VINYL COATED GYP BOARD PANELS
104 KITCHEN PREP.	QT 8" X 8" CONT. QUARRY TILE	QT2 6" X 12" CONT. 1/8" RAD. MIN (KITCHEN EQUIPMENT ON 6" NSF APPROVED LEGS)	WP1 FRP PANEL	C2 2' X 4' SUSPENDED GRID WASHABLE VINYL COATED GYP BOARD PANELS
105 WALK-IN COOLER	QT 8" X 8" CONT. QUARRY TILE	S.S. / ALUMINUM WITH 1/8" RADIUS	EXT S.S.	ALUMINUM GALVANIZED STAINLESS STEEL
105A WALK-IN FREEZER	QT 8" X 8" CONT. QUARRY TILE	S.S. / ALUMINUM WITH 1/8" RADIUS	EXT S.S.	ALUMINUM GALVANIZED STAINLESS STEEL
106 MEN'S ROOM	T200 24" X 24" TILE	SCHLUTER	T108 TILE	C3 GYP BOARD W/ P101 SMOOTH WASHABLE PAINT
107 WOMEN'S ROOM	T200 24" X 24" TILE	SCHLUTER	T108 TILE	C3 GYP BOARD W/ P101 SMOOTH WASHABLE PAINT
108 VESTIBULE	T200 24" X 24" TILE	T109 6" X 48" TILE	P104 PAINT GYP BOARD T109 TILE	C3 GYP BOARD W/ P101 SMOOTH WASHABLE PAINT
109 STORAGE ROOM	T200 24" X 24" TILE	T109 6" X 48" TILE	WP1 FRP PANEL	C3 GYP BOARD W/ P101 SMOOTH WASHABLE PAINT
110 EXTERIOR STORAGE	SEALED CONCRETE, SMOOTH FINISH	-	WP1 FRP PANEL	C3 GYP BOARD W/ P101 SMOOTH WASHABLE PAINT

DOOR & HARDWARE SCHEDULE INSTALLED AND FURNISHED BY G.C. UNLESS NOTED OTHERWISE

NO.	DESCRIPTION	NO.	DESCRIPTION
01	ALUMINUM STOREFRONT 3'-0" X 7'-0" ALUM. DARK BRONZE ANODIZED ALUM. 1/2" HOLLOW GLASS	07	18 GA. STAINLESS STEEL CORNER GUARD - FULL HT
02	ALUMINUM STOREFRONT 3'-6" X 7'-0" ALUM. DARK BRONZE ANODIZED ALUM. 1/2" HOLLOW GLASS	08	18 GA. STAINLESS STEEL CORNER GUARD - 4'-0" HIGH
03	S.C. WOOD 3'-0" X 7'-0" H. MTL. PLASTIC LAMINATE PRE-FINISHED 1/2" SOLID	09	18 GA. STAINLESS STEEL CORNER GUARD/FRAME - ALL AROUND PERIMETER OF OPENING - FRAME TO BE WELDED WITH MITERED CORNERS TO FORM SINGLE UNIT.
04	S.C. WOOD 3'-0" X 7'-0" H. MTL. PLASTIC LAMINATE PRE-FINISHED 1/2" SOLID	10	18 GA. STAINLESS STEEL WALL CAP
05	HOLLOW METAL 3'-6" X 7'-0" H. MTL. PAINTED 1/2" INSUL.	11	18 GA. STAINLESS STEEL INSIDE CORNER / CLOSURE - FROM TOP OF QT BASE TO UNDERSIDE OF CEILING, AT WALK-INS
06	HOLLOW METAL (2) 3'-0" X 7'-0" H. MTL. PAINTED 1/2" INSUL.	12	18 GA. STAINLESS STEEL INSIDE CORNER / CLOSURE - FROM TOP OF QT BASE TO UNDERSIDE OF CEILING, AT WALK-INS

WALL SCHEDULE INSTALLED AND FURNISHED BY G.C. UNLESS NOTED OTHERWISE

NO.	DESCRIPTION
01	3-5/8" 20GA. METAL STUD WALL W/ 1/2" TYPE "X" GYP. BOARD BOTH SIDES (SEE ARCHITECTURAL DETAILS & ELEVATIONS)
02	3-5/8" 20GA. METAL STUD WALL W/ 1/2" TYPE "X" GYP. BOARD ON ONE SIDE (SEE ARCHITECTURAL DETAILS & ELEVATIONS)
03	(2) 3-5/8" 20GA. METAL STUD WALLS W/ 1/2" TYPE "X" GYP. BOARD BOTH SIDES (SEE ARCHITECTURAL DETAILS & ELEVATIONS)
04	3-5/8" 20GA. METAL STUD LOW WALL W/ 1/2" TYPE "X" GYP. BD BOTH SIDES. PROVIDE 3/2" KNEE-WALL BRACE/POST @ CORNERS AND @ 48" O.C.
05	6" 20GA. METAL STUD WALL W/ 1/2" TYPE "X" GYP. BOARD BOTH SIDES (SEE ARCHITECTURAL DETAILS & ELEVATIONS)
06	6" 20GA. METAL STUD WALL W/ 1/2" TYPE "X" GYP. BOARD ONE SIDE (SEE ARCHITECTURAL DETAILS & ELEVATIONS)
07	6" 20GA. METAL STUD LOW WALL W/ 1/2" TYPE "X" GYP. BOARD BOTH SIDES. PROVIDE 3/2" KNEE-WALL BRACE/POST @ CORNERS AND @ 48" O.C.

WALL PANEL SCHEDULE INSTALLED AND FURNISHED BY G.C. UNLESS NOTED OTHERWISE

NO.	MANUFACTURER	DESCRIPTION	MFG #	COLOR FINISH	REMARK
01	CRANE COMPOSITES INC.	F.R.P. THICKNESS: .075	LBCS.14	#636 (GRAY), S/M/S	CONTACT: LINDA RUSE 310.857.9036
02	-	S.S. PANEL (22 GA)	-	BRUSHED FINISH	FURNISHED BY PX, INSTALLED BY G.C.
03	-	S.S. PANEL (22 GA)	-	DIAMOND PATTERN FINISH	FURNISHED BY PX, INSTALLED BY G.C.
04	NOT USED	-	-	-	-
05	NOT USED	-	-	-	-
06	NOT USED	-	-	-	-
07	WOLF GORDON	PRINT WALL COVERING	-	-	CONTACT: CATHY DY 310.770.1165 cathy.dy@wolfgordon.com

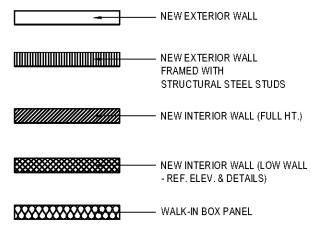
SPECIAL SURFACE SCHEDULE INSTALLED AND FURNISHED BY G.C. UNLESS NOTED OTHERWISE

NO.	MANUFACTURER	PRODUCT	MFG #	STAIN / COLOR	FINISH	REMARK
01	SELECTIVE STONE	ARTIFICIAL QUARTZ	-	BEACH SAND QUARTZ	POLISHED	SERVICE COUNTER, SERVICE LINE SOFFIT, DRIVE-THRU STATION
02	SAMSUNG RADIANTZ	ARTIFICIAL QUARTZ	UG-450	URAL GRAY	POLISHED	LAVATORY, UNDER MOUNT SINK CENTER PROVIDE 1/2" SINK, INSTALLATION BY G.C.

INTERIOR PAINT SCHEDULE INSTALLED AND FURNISHED BY G.C. UNLESS NOTED OTHERWISE

NO.	MANUFACTURER	MFG #	COLOR	FINISH	REMARK
01	SHERWIN-WILLIAMS	SW 7065	ARGOS	PROMAR 200, ZERO VOC, LATEX SEMI-GLOSS	RESTROOM SERVICE DOOR
02	NOT USED	-	-	-	-
03	SHERWIN-WILLIAMS	SW 6252	ICE CUBE	ALL-SURFACE ENAMEL SATIN	RESTROOM & RESTROOM VESTIBULE CEILING, SERVICE LINE SOFFIT
04	NOT USED	-	-	-	-
05	SHERWIN-WILLIAMS	SW 7032	WARM STONE	DRIVE-THRU SOFFITS	-
06	SHERWIN-WILLIAMS	SW 6155	RICE GRAY	PROMAR 200, ZERO VOC, LATEX EGG-SHELL	DINING RM. WALLS, RESTROOM VESTIBULE WALLS
07	NOT USED	-	-	-	-
08	SHERWIN-WILLIAMS	SW 7020	BLACK FAN	SEMIGLOSS, ZERO VOC	RESTROOM DOOR FRAMES & LCD NICHE (BACK WALL)
09	SHERWIN-WILLIAMS	SW 7675	SEALSKIN	ALL-SURFACE ENAMEL SATIN	FRONT & BACK & UNDERSIDE FACES OF SERVICE COUNTER SOFFIT

WALL LEGEND



NOTE: THE FOLLOWING STAINLESS STEEL PROVIDED BY PX - INSTALLED BY G.C.:

- PANEL DIVIDERS AT WP3
- INSIDE CORNER AT WP3 TO WP2
- FLASHINGS AT TOP OF BASE WP3
- WP2 PIECE AT LENGTH OF WALL

NOTE: THE FOLLOWING STAINLESS STEEL PROVIDED BY G.C. - INSTALLED BY G.C.:

- INSTALL 18 GA STAINLESS STEEL CORNER GUARD & WALL CAP INSIDE KITCHEN

- 18 GA. STAINLESS STEEL CORNER GUARD - FULL HT
- 18 GA. STAINLESS STEEL CORNER GUARD - 4'-0" HIGH
- 18 GA. STAINLESS STEEL CORNER GUARD/FRAME - ALL AROUND PERIMETER OF OPENING - FRAME TO BE WELDED WITH MITERED CORNERS TO FORM SINGLE UNIT.
- 18 GA. STAINLESS STEEL WALL CAP
- 18 GA. STAINLESS STEEL INSIDE CORNER / CLOSURE - FROM TOP OF QT BASE TO UNDERSIDE OF CEILING, AT WALK-INS

NOTE: ALL OTHER STAINLESS STEEL BY G.C.

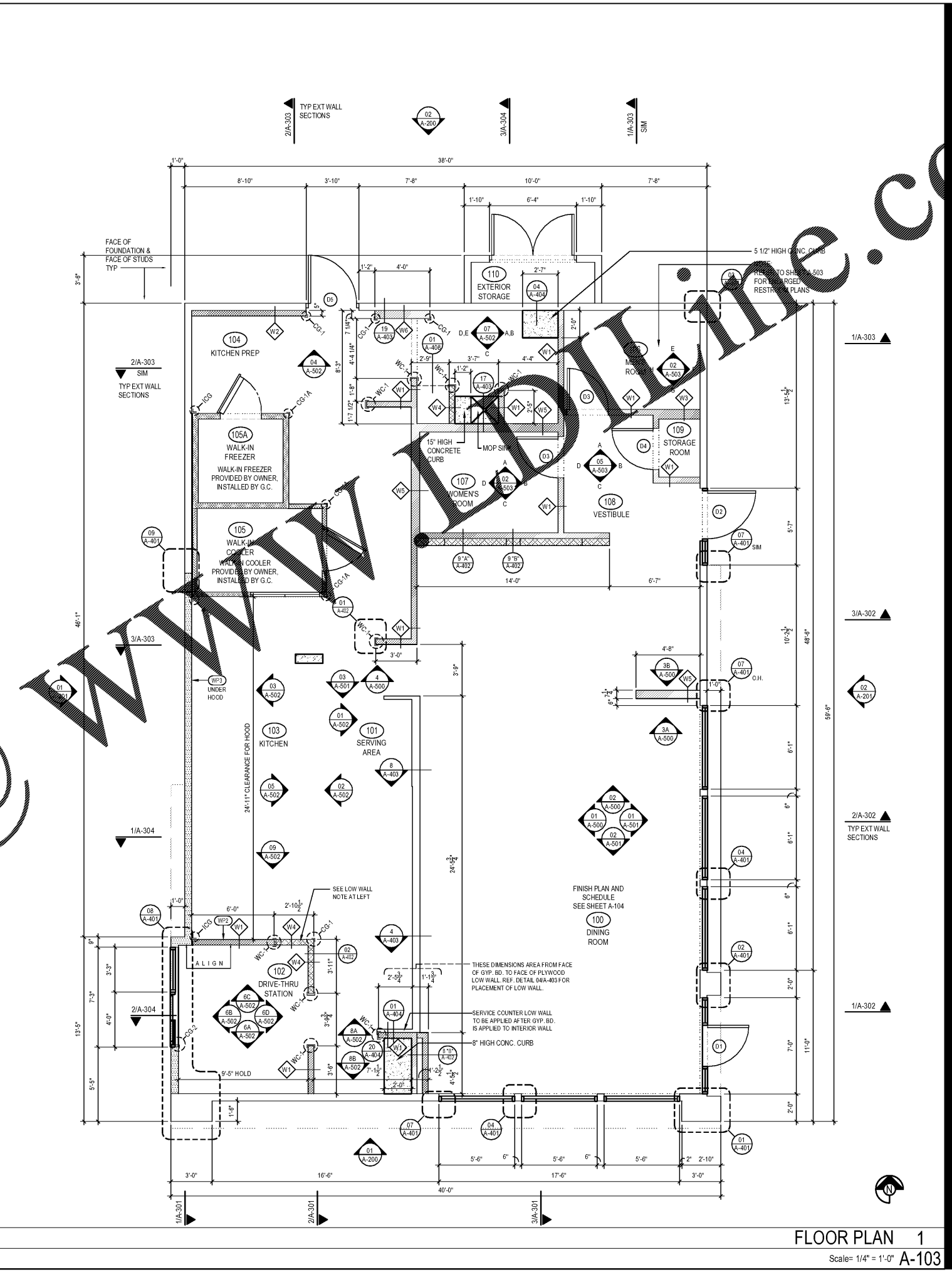
NOTE: ALL MISC STAINLESS (CAPS, CORNERS ETC) SHALL BE 18 GA TYPE 304 BRUSHED STAINLESS STEEL.

*ATL-SHAPED LOW WALL AT DRIVE-THRU, PROVIDE WELDED AND GROUND SMOOTH WALL CAP. SHOULD "APPEAR AS THOUGH ONE PIECE"

NOTE: *S.C. TO INSTALL MIN 3 1/2" NON-COMBUSTIBLE MINERAL FIBERGLASS BATTS SOUND INSULATION AT ALL RESTROOM PARTITIONS AND CEILING.

*ALL INTERIOR DIMENSIONS ARE FROM OUTSIDE FACE OF DRYWALL TO OUTSIDE FACE OF DRYWALL TYPE.

TILE SCHEDULE (SEE SHEET A-104)



PANDA EXPRESS, INC.
1683 Walnut Grove Ave.
Rosemead, California 91770
Telephone: 626.799.9898
Facsimile: 626.372.8288

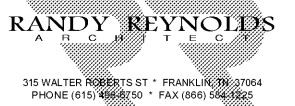
All ideas, designs, arrangement and plans indicated or represented by this drawing are the property of Panda Express Inc. and were created for use on this specific project. None of these ideas, designs, arrangements or plans may be used by or disclosed to any person, firm, or corporation without the written permission of Panda Express Inc.

REVISIONS:

NO.	DESCRIPTION

ISSUE DATE:
1st ISSUE FOR PERMIT 11-30-18

DRAWN BY: RR
PANDA PROJECT #: S8-19-D6559
ARCH PROJECT #: 1805



315 WALTER ROBERTS ST • FRANKLIN, TN 37064
PHONE (615) 496-8750 • FAX (666) 584-1325



PANDA EXPRESS
ELM HILL PIKE AT DONELSON PIKE
2740 ELM HILL PIKE
NASHVILLE, TN 37214
2200 TRUE R1 (DAB 013)

A-103
FLOOR PLAN

Order Plans @