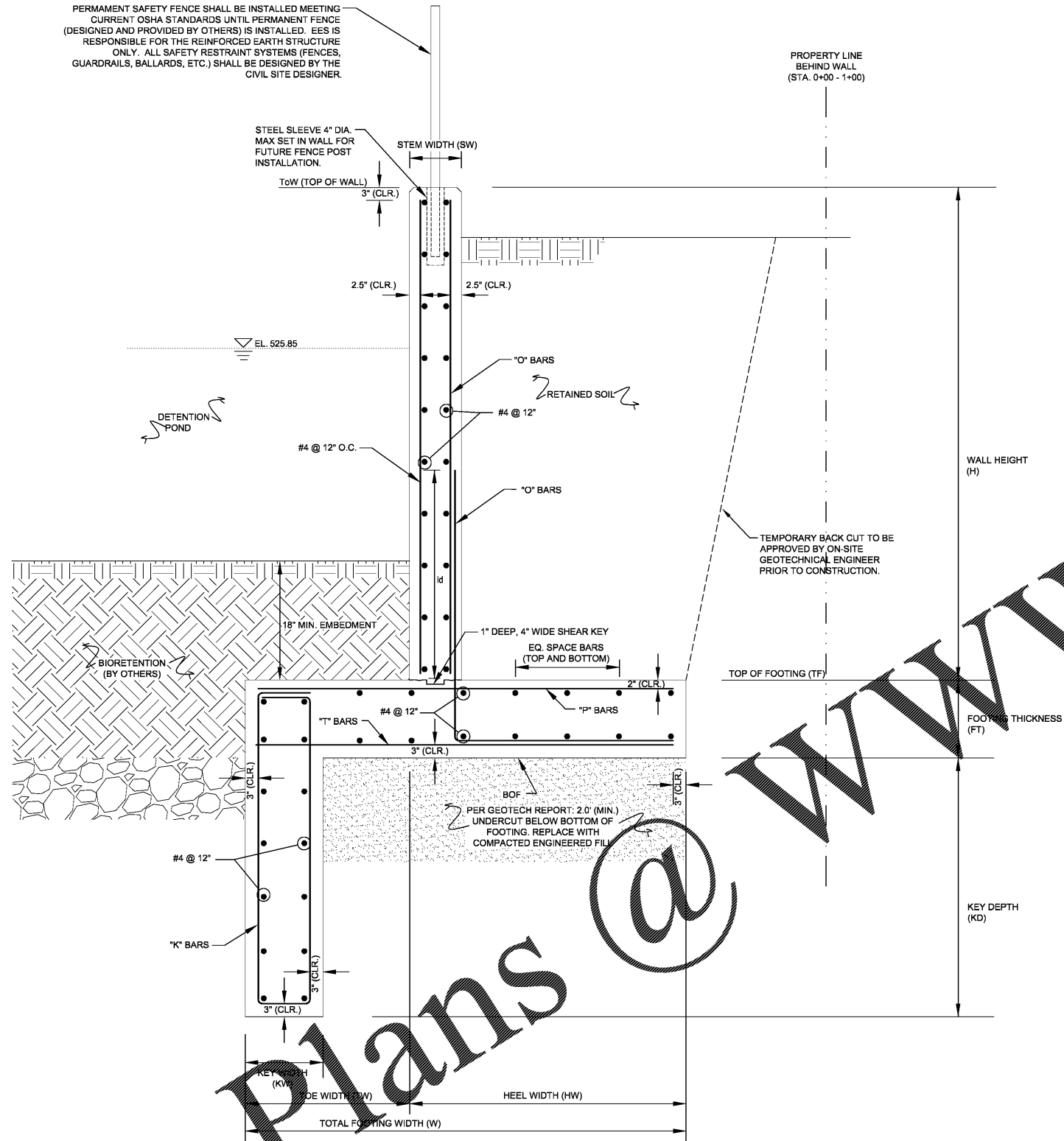
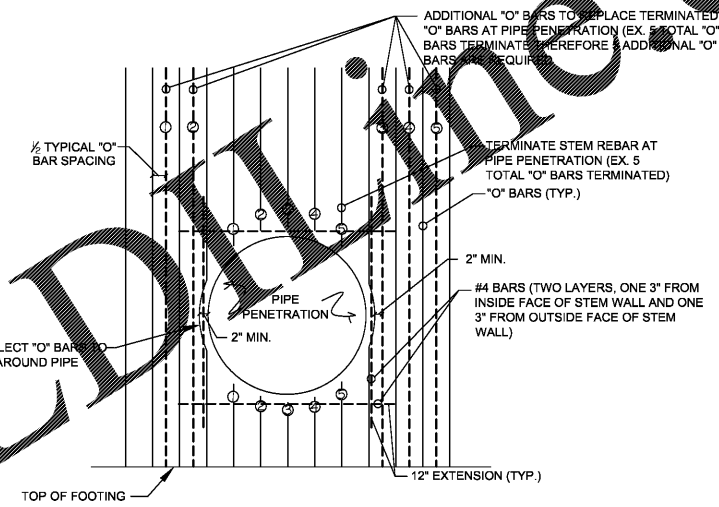


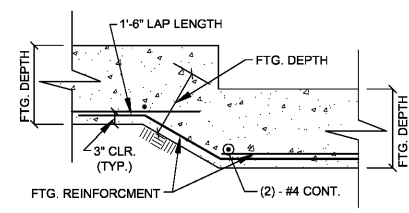
PERMANENT SAFETY FENCE SHALL BE INSTALLED MEETING CURRENT OSHA STANDARDS UNTIL PERMANENT FENCE (DESIGNED AND PROVIDED BY OTHERS) IS INSTALLED. EES IS RESPONSIBLE FOR THE REINFORCED EARTH STRUCTURE ONLY. ALL SAFETY RESTRAINT SYSTEMS (FENCES, GUARDRAILS, BALLARDS, ETC.) SHALL BE DESIGNED BY THE CIVIL SITE DESIGNER.



NOTE: CONSTRUCTION VERIFICATION OF THE WALL INSTALLATION BY AN ENGINEER IS REQUIRED BY THE LOCAL MUNICIPALITY AND MUST BE PROVIDED BY A KNOWLEDGEABLE GEOTECHNICAL ENGINEER FAMILIAR WITH CAST-IN-PLACE STRUCTURES.



PIPE PENETRATION DETAIL  
NOT TO SCALE



STEPPED FOOTING DETAIL  
NOT TO SCALE

BAR NO.	ld (DEVELOPMENT LENGTH - USED FOR SPLICING BARS)
4	29"
5	36"
6	43"

SEE CAST IN PLACE (CIP) RETAINING WALL SCHEDULE FOR REINFORCEMENT AND DIMENSIONS  
**TYPICAL CAST IN PLACE CROSS SECTION**  
NOT TO SCALE

CIP RETAINING WALL SCHEDULE												
Design Section	H	SW	FT	W	TW	HW	KW	KD	"O" (Dwis)	"T" (Bars)	"P" (Bars)	"K" (Bars)
<b>Cast-In-Place Sections</b>												
S10	10.2'	12"	20"	10'-6"	1'-9"	8'-9"	12"	4'-1"	#6 @ 9"	#5 @ 9"	#6 @ 9"	#4 @ 9"
S9	9.2'	12"	15"	7'-6"	2'-6"	5'-0"	12"	4'-6"	#5 @ 9"	#5 @ 9"	#5 @ 9"	#4 @ 9"

THIS DESIGN IS BASED UPON SPECIFIC PROPERTIES OF MATERIALS WHICH ARE PROPRIETARY. ANY SUBSTITUTION OF THE SPECIFIED PRODUCTS OR CHANGE IN STRUCTURE GEOMETRY WILL INVALIDATE THIS DESIGN. THIS DRAWING IS BEING FURNISHED FOR USE ON THIS SPECIFIC PROJECT ONLY. ANY PARTY ACCEPTING THIS DOCUMENT DOES SO IN CONFIDENCE AND AGREES THAT IT SHALL NOT BE DUPLICATED, IN WHOLE OR IN PART, NOR DISCLOSED TO OTHERS WITHOUT THE CONSENT OF ENGINEERED EARTH SOLUTIONS, LLC. THIS DRAWING, DESIGN NOTES, AND ASSOCIATED CALCULATIONS HAVE BEEN PREPARED BY ENGINEERED EARTH SOLUTIONS, LLC. FROM INFORMATION PROVIDED BY OTHERS. FINAL DETERMINATION OF THE SUITABILITY OF ANY INFORMATION CONTAINED HEREIN IS THE RESPONSIBILITY OF THE USER.

COPYRIGHT © 2018 ENGINEERED EARTH SOLUTIONS, LLC.

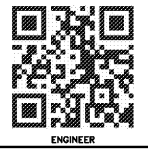
REVISION/ISSUE

NO.	DATE	DESCRIPTION
1	11/16/18	ISSUE FOR CONSTRUCTION

DRAWN BY: CWL  
DESIGNED BY: CWL  
CHECKED BY: LGP  
DATE: 11/16/18  
SCALE:  
AS NOTED

**INGENIUM ENTERPRISES, INC.**  
221 ROSWELL STREET, SUITE 100  
ALPHARETTA, GA 30009  
TEL: (770) 437-8850  
CLIENT

**ENGINEERED EARTH SOLUTIONS, LLC**  
441 CREEKSTONE RIDGE  
WOODSTOCK, GEORGIA 30188  
TEL: (770) 592-2850 FAX: (770) 592-2853  
EMAIL: ENGINEERING@EESOLS.COM  
ENGINEER@EARTH SOLUTIONS.COM



PANDA EXPRESS  
TENNESSEE  
NASHVILLE

DETAIL SHEET

SHEET  
**CIP3**  
OF 3

PROJECT NO.: M18-0979

Order Plans @