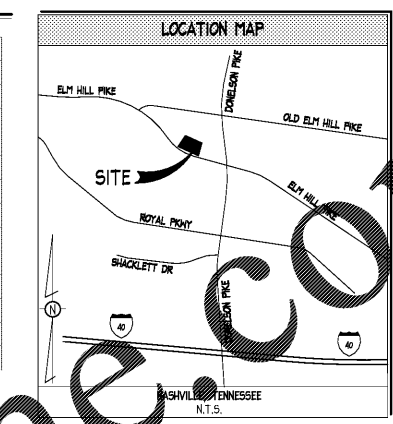


EROSION CONTROL LEGEND

ESPC BMP	LINETYPE/SYMBOL	REFERENCE
CE CONSTRUCTION EXIT		SHEET C06.3
SF SILT FENCE		SHEET C06.3
IP STORY DRAIN INLET PROTECTION		SHEET C06.4
OP STORY DRAIN OUTLET PROTECTION		SHEET C06.6
PS D.A.S. WITH PERMANENT VEGETATION		REFER TO LANDSCAPE SHEETS
SO D.A.S. WITH SOD		SHEET C06.5
TS D.A.S. WITH TEMPORARY VEGETATION		NOT APPLICABLE
MS D.A.S. WITH MULCH		SHEET C06.5
CH CONCRETE MASHOUT		SHEET C06.4
TH TUBES AND HATTLES		SHEET C06.5
RECP ROLLED EROSION CONTROL PRODUCT		SHEET C06.3
TD DIVERSION		NOT APPLICABLE
TREE PROTECTION FENCE		NOT APPLICABLE

D.A.S. = DISTURBED AREA STABILIZATION



ESPC NOTES

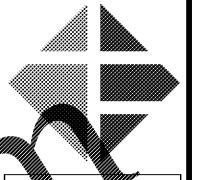
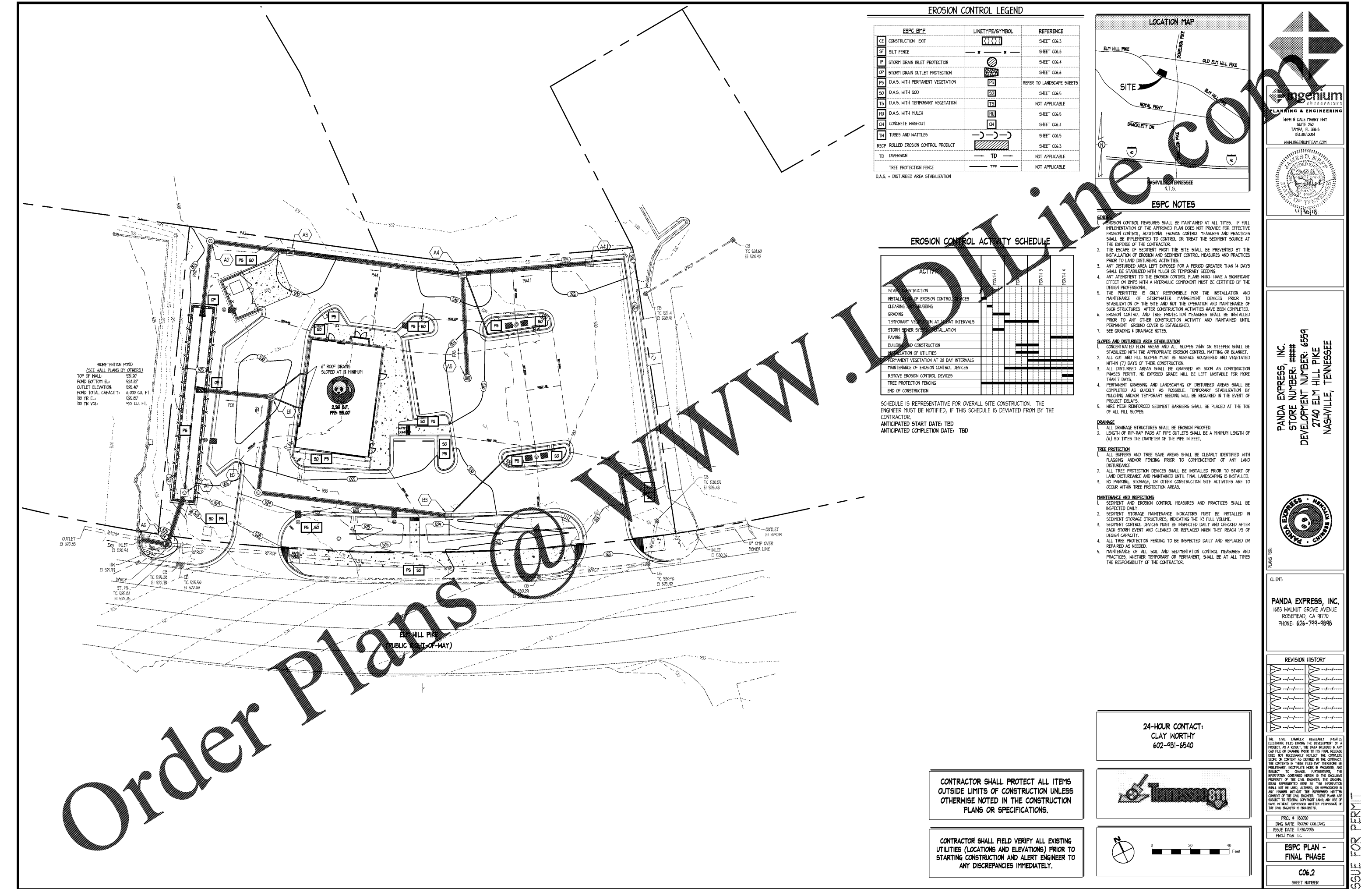
- GENERAL NOTES:
- EROSION CONTROL MEASURES SHALL BE MAINTAINED AT ALL TIMES. IF FULL IMPLEMENTATION OF THE APPROVED PLAN DOES NOT PROVIDE FOR EFFECTIVE EROSION CONTROL, ADDITIONAL EROSION CONTROL MEASURES AND PRACTICES SHALL BE IMPLEMENTED TO CONTROL OR TREAT THE SEDIMENT SOURCE AT THE EXPENSE OF THE CONTRACTOR.
  - THE ESCAPE OF SEDIMENT FROM THE SITE SHALL BE PREVENTED BY THE INSTALLATION OF EROSION AND SEDIMENT CONTROL MEASURES AND PRACTICES PRIOR TO LAND DISTURBING ACTIVITIES.
  - ANY DISTURBED AREA LEFT EXPOSED FOR A PERIOD GREATER THAN 14 DAYS SHALL BE STABILIZED WITH MULCH OR TEMPORARY SEEDING.
  - ANY ADDENDUM TO THE EROSION CONTROL PLANS WHICH HAVE A SIGNIFICANT EFFECT ON BMPs WITH A HYDRAULIC COMPONENT MUST BE CERTIFIED BY THE DESIGN PROFESSIONAL.
  - THE PERMITTEE IS ONLY RESPONSIBLE FOR THE INSTALLATION AND MAINTENANCE OF STORMWATER MANAGEMENT DEVICES PRIOR TO STABILIZATION OF THE SITE AND NOT THE OPERATION AND MAINTENANCE OF SUCH STRUCTURES AFTER CONSTRUCTION ACTIVITIES HAVE BEEN COMPLETED.
  - EROSION CONTROL AND TREE PROTECTION MEASURES SHALL BE INSTALLED PRIOR TO ANY OTHER CONSTRUCTION ACTIVITY AND MAINTAINED UNTIL PERMANENT GROUND COVER IS ESTABLISHED.
  - SEE GRADING & DRAINAGE NOTES.
- SLOPES AND DISTURBED AREA STABILIZATION**
- CONCENTRATED FLOW AREAS AND ALL SLOPES 2H:1V OR STEEPER SHALL BE STABILIZED WITH THE APPROPRIATE EROSION CONTROL MATTING OR BLANKET.
  - ALL CUT AND FILL SLOPES MUST BE SURFACE ROUGHENED AND VEGETATED WITHIN (7) DAYS OF THEIR CONSTRUCTION.
  - ALL DISTURBED AREAS SHALL BE GRASSSED AS SOON AS CONSTRUCTION PHASES PERMIT. NO EXPOSED GRADE WILL BE LEFT UNSTABLE FOR MORE THAN 7 DAYS.
  - PERMANENT GRASSING AND LANDSCAPING OF DISTURBED AREAS SHALL BE COMPLETED AS QUICKLY AS POSSIBLE. TEMPORARY STABILIZATION BY MULCHING AND/OR TEMPORARY SEEDING WILL BE REQUIRED IN THE EVENT OF PROJECT DELAYS.
  - WIRE MESH REINFORCED SEDIMENT BARRIERS SHALL BE PLACED AT THE TOE OF ALL FILL SLOPES.
- DRAINAGE**
- ALL DRAINAGE STRUCTURES SHALL BE EROSION PROOFED.
  - LENGTH OF RIP-RAP PADS AT PIPE OUTLETS SHALL BE A MINIMUM LENGTH OF (6) SIX TIMES THE DIAMETER OF THE PIPE IN FEET.
- TREE PROTECTION**
- ALL BUFFERS AND TREE SAVE AREAS SHALL BE CLEARLY IDENTIFIED WITH FLAGGING AND/OR FENCING PRIOR TO COMMENCEMENT OF ANY LAND DISTURBANCE.
  - ALL TREE PROTECTION DEVICES SHALL BE INSTALLED PRIOR TO START OF LAND DISTURBANCE AND MAINTAINED UNTIL FINAL LANDSCAPING IS INSTALLED.
  - NO PARKING, STORAGE, OR OTHER CONSTRUCTION SITE ACTIVITIES ARE TO OCCUR WITHIN TREE PROTECTION AREAS.
- MAINTENANCE AND INSPECTIONS**
- SEDIMENT AND EROSION CONTROL MEASURES AND PRACTICES SHALL BE INSPECTED DAILY.
  - SEDIMENT STORAGE MAINTENANCE INDICATORS MUST BE INSTALLED IN SEDIMENT STORAGE STRUCTURES, INDICATING THE 1/3 FULL VOLUME.
  - SEDIMENT CONTROL DEVICES MUST BE INSPECTED DAILY AND CHECKED AFTER EACH STORM EVENT AND CLEANED OR REPLACED WHEN THEY REACH 1/3 OF DESIGN CAPACITY.
  - ALL TREE PROTECTION FENCING TO BE INSPECTED DAILY AND REPLACED OR REPAIRED AS NEEDED.
  - MAINTENANCE OF ALL SOIL AND SEDIMENTATION CONTROL MEASURES AND PRACTICES, WHETHER TEMPORARY OR PERMANENT, SHALL BE AT ALL TIMES THE RESPONSIBILITY OF THE CONTRACTOR.

EROSION CONTROL ACTIVITY SCHEDULE

ACTIVITY	MONTH 1	MONTH 2	MONTH 3	MONTH 4
START CONSTRUCTION				
INSTALLATION OF EROSION CONTROL DEVICES				
CLEARING AND GRUBBING				
GRADING				
TEMPORARY VEGETATION AT 14 DAY INTERVALS				
STORY DRAIN SYSTEM INSTALLATION				
PAVING				
BUILDING CONSTRUCTION				
INSTALLATION OF UTILITIES				
PERMANENT VEGETATION AT 30 DAY INTERVALS				
MAINTENANCE OF EROSION CONTROL DEVICES				
REMOVE EROSION CONTROL DEVICES				
TREE PROTECTION FENCING				
END OF CONSTRUCTION				

SCHEDULE IS REPRESENTATIVE FOR OVERALL SITE CONSTRUCTION. THE ENGINEER MUST BE NOTIFIED, IF THIS SCHEDULE IS DEVIATED FROM BY THE CONTRACTOR.  
 ANTICIPATED START DATE: TBD  
 ANTICIPATED COMPLETION DATE: TBD

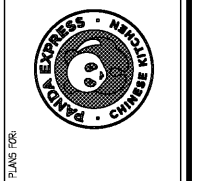
BIORETENTION POND  
 (SEE HULL PLANS BY OTHERS)  
 TOP OF WALL: 531.20'  
 POND BOTTOM EL: 524.32'  
 OUTLET ELEVATION: 525.47'  
 POND TOTAL CAPACITY: 6,000 CU. FT.  
 100 YR EL: 525.85'  
 100 YR VOL: 922 CU. FT.



ingenium  
 PLANNING & ENGINEERING  
 1499 N DALE MERRY HWY  
 SUITE 250  
 TAMPA, FL 33635  
 813.971.0084  
 HHKINGENIUMTEAM.COM



PANDA EXPRESS, INC.  
 STORE NUMBER: #####  
 DEVELOPMENT NUMBER: 6559  
 2740 ELM HILL PIKE  
 NASHVILLE, TENNESSEE



CLIENT:  
 PANDA EXPRESS, INC.  
 1683 WALNUT GROVE AVENUE  
 ROSEMead, CA 91770  
 PHONE: 626-799-9898

REVISION HISTORY

NO.	DESCRIPTION	DATE
1	ISSUED FOR PERMIT	11/30/2018

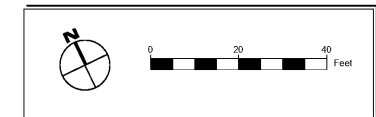
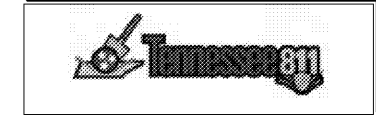
THE CIVIL ENGINEER REGULARLY UPDATES ELECTRONIC FILES DURING THE DEVELOPMENT OF A PROJECT. AS A RESULT, THE DATA INCLUDED IN ANY CAD FILE OR DRAWING PRIOR TO ITS FINAL RELEASE DOES NOT NECESSARILY REFLECT THE COMPLETE SCOPE OR CONTENT AS REVISED IN THE CONTRACT. THE CONTENTS IN THESE FILES MAY THEREFORE BE PRELIMINARY, INCOMPLETE, WORK IN PROGRESS, AND SUBJECT TO CHANGE. FURTHERMORE, THE INFORMATION CONTAINED HEREIN IS THE SOLE PROPERTY OF THE CIVIL ENGINEER. THE ORIGINAL DRAWING REPRESENTED HERE BY THIS INFORMATION SHALL NOT BE LOANED, ALTERED, OR REPRODUCED IN ANY FORMER WITHOUT THE EXPRESSED WRITTEN CONSENT OF THE CIVIL ENGINEER. THESE PLANS ARE SUBJECT TO FEDERAL COPYRIGHT LAWS. ANY USE OF THESE MATERIALS EXCEPTED WRITTEN PERMISSION OF THE CIVIL ENGINEER IS PROHIBITED.

PROJ # 180250  
 DWG NAME 180250 C06.DWG  
 ISSUE DATE 11/30/2018  
 PROJ MGR LLC  
 ESPC PLAN - FINAL PHASE  
 C06.2  
 SHEET NUMBER

CONTRACTOR SHALL PROTECT ALL ITEMS OUTSIDE LIMITS OF CONSTRUCTION UNLESS OTHERWISE NOTED IN THE CONSTRUCTION PLANS OR SPECIFICATIONS.

CONTRACTOR SHALL FIELD VERIFY ALL EXISTING UTILITIES (LOCATIONS AND ELEVATIONS) PRIOR TO STARTING CONSTRUCTION AND ALERT ENGINEER TO ANY DISCREPANCIES IMMEDIATELY.

24-HOUR CONTACT:  
 CLAY WORTHY  
 602-931-6540



Order Plans @ www.Downline.com

ISSUE FOR PERMIT