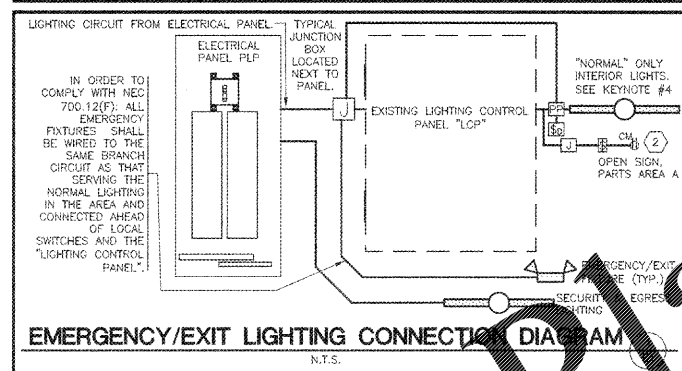
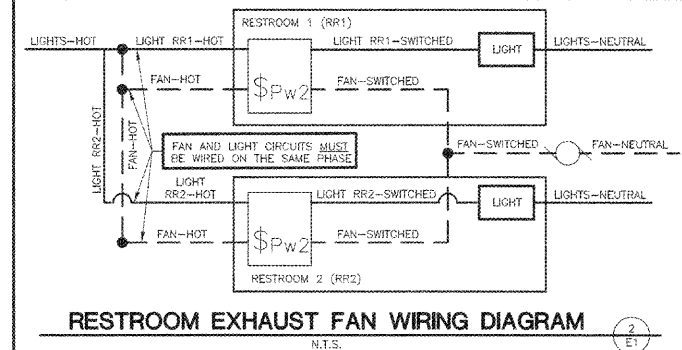


LIGHT FIXTURE SCHEDULE																
ALL ITEMS LISTED ON THE "LIGHT FIXTURE SCHEDULE" WILL BE SUPPLIED BY THE OWNER (O'REILLY). ITEMS SHALL BE DIRECT ORDERED AND OR RELEASED FROM THE LISTED ELECTRICAL EQUIPMENT DISTRIBUTOR:																
GRAYBAR ELECTRIC CO. INC. 11885 LACKLAND ROAD ST. LOUIS, MO 63146																
GRAYBAR O'REILLY TEAM EMAIL: oreilly@graybar.com TOLL FREE: (314) 573-2080																
MARK	MFR.	CATALOG NUMBER	SUPPLY VOLTAGE	FINISH	MOUNTING				LAMP		WATTAGE	DESCRIPTION OF ACCESSORIES	NOTES	FIXTURE QUANTITY		
					LAT-IN RECESSED	SURFACE WALL	SURF. CEILING	OTHER	TYPE	QUANTITY					(General Electric) LAMP CATALOG NUMBER/TYPE	
<b>LED DIMMABLE LIGHTS - ALL INDOOR LIGHT FIXTURES SHALL HAVE DISCONNECTING MEANS TO COMPLY WITH NEC 410.130(G)</b>																
A	LSI	SDL8 LED 80L FL UNV DM1 40 BOCR1 OR NO SUBSTITUTIONS	120	WHITE		X		X			82	GRID HANGER (2 PER FIXTURE)	GRID HANGER (648480) (CEILING GRID ONLY). 0-10 VOLT DIMMING DRIVER STANDARD.	54		
B	LSI	SDL4 LED 40L FL UNV DM1 40 BOCR1 OR NO SUBSTITUTIONS	120	WHITE		X		X			30	GRID HANGER (2 PER FIXTURE)	GRID HANGER (648480) (CEILING GRID ONLY). 0-10 VOLT DIMMING DRIVER STANDARD.	3		
C	LSI	SDL8 LED 80L FL UNV DM1 40 BOCR1 OR NO SUBSTITUTIONS	120	WHITE			X	X			62	3' CHAIN HANGING KIT (1 PER FIXTURE)	HANG TOP OF FIXTURES AT 12" A.F.F. WITH CHAIN HANGERS AND LENGTH OF CHAIN AS REQUIRED. 0-10 VOLT DIMMING DRIVER STANDARD.	78		
D	LSI	SDL4 LED 40L FL UNV DM1 40 BOCR1 OR NO SUBSTITUTIONS	120	WHITE			X	X			30	3' CHAIN HANGING KIT (1 PER FIXTURE)	HANG TOP OF FIXTURES AT 12" A.F.F. WITH CHAIN HANGERS AND LENGTH OF CHAIN AS REQUIRED. 0-10 VOLT DIMMING DRIVER STANDARD.	15		
<b>COMBINATION EXIT/EMERGENCY LIGHTS, EMERGENCY LIGHTS &amp; EXTERIOR EMERGENCY REMOTE HEADS</b>																
XR	COOPER	APCH7R (RED LETTERS)	120	WHITE		X	X		X		2	LED EXIT + (2) 3.6V	2.34	UNIVERSAL (WALL/CLG.) SINGLE PR DOUBLE FACE	BACKUP BATTERIES SHALL MAINTAIN 100% ILLUMINATION FOR A MINIMUM OF 90 MINUTES TO COMPLY WITH ARTICLE 700.12(A) OF THE N.E.C.	13
EM	COOPER	APEL	120	WHITE		X	X		X		2	3.6V	0.33	UNIVERSAL (WALL/CLG.)	BACKUP BATTERIES SHALL MAINTAIN 100% ILLUMINATION FOR A MINIMUM OF 90 MINUTES TO COMPLY WITH ARTICLE 700.12(A) OF THE N.E.C.	33
RM2	COOPER	APWR2	3.6V DC	WHITE		X		X			2	LED REMOTE HEAD	0		POWERED BY EMERGENCY "XR" FIXTURE.	4
<b>LED EXTERIOR LIGHTS</b>																
PC	INTERMATIC	PHOTOCELL - #K4251	120	DARK BRONZE		X									MOUNT ABOVE WALL SCONCE LOCATED NEAR FREIGHT DOOR.	1
L	LSI	LAD6 41 LED 40 75 UE TRRR SFHAZ	120	CLEAR		X									RECESSED CAN.	1
WS1	LSI	XWM-FT-LED-66L-50-UE-BRZ NO SUBSTITUTIONS	120	DARK BRONZE		X		X							PULL OUT-OFF, BUG RATING 91-100-61. ARCHITECTURAL ELEVATIONS SHOW DIMENSIONED LOCATIONS. SEE SITE LIGHTING DETAILS SHEET SP1.	4
P1	LSI	MRM-LED-19L-18L-5W-LW-DM-50-BOCRI-BRZ-IL	120	DARK BRONZE				X	X						ADVANCE BALLASTS, FULL CUT-OFF, NO SUBSTITUTIONS. WITH INTERNAL LOUVER HOUSE SIDE SHIELD, BUG RATING 82-100-63. SEE SITE LIGHTING DETAILS SHEET SP1.	2
P2	LSI	MRM-LED-19L-18L-5W-LW-DM-50-BOCRI-BRZ-IL	120	DARK BRONZE				X	X						25' POLE LENGTH, ADVANCE BALLASTS, FULL CUT-OFF, NO SUBSTITUTIONS. ANCHOR BOLTS W/HARDWARE & TEMPLATE, WITH INTERNAL LOUVER HOUSE SIDE SHIELD, BUG RATING 82-100-63. SEE SITE LIGHTING DETAILS SHEET SP1.	1

FIXTURE QUANTITY TO BE VERIFIED WITH LIGHTING PLAN QUANTITY

**INTERIOR LIGHTING ZONES**  
ALL INTERIOR LIGHTING WITHIN PARTS AREA "A" SHALL BE CONSIDERED "SALES" ZONE (ON ONLY WHEN STORE IS OPEN FOR BUSINESS).  
ALL INTERIOR LIGHTING WITH PARTS AREA "B", PARTS AREA "C", RESTROOMS, OFFICE, AND BREAK AREA SHALL BE CONSIDERED "WORK" ZONES (ON WHENEVER THERE IS MOTION OR THE STORE IS OPEN).

**EMERGENCY/EXIT LIGHTING**  
PLACE EXIT SIGNS HIGH ENOUGH TO BE SEEN ABOVE ALL MERCHANDISE WITH THE FOLLOWING LIMITATIONS: THE MAXIMUM HEIGHT FOR AN EXIT LIGHT ASSOCIATED WITH A SPECIFIC OPENING (I.E. MOUNTED OVER A DOOR OR OPENING) SHALL BE NO GREATER THAN THE CODE ALLOWED 8'-8" ABOVE THE TOP EDGE OF THE DOOR OR OPENING.



**AUTOMATIC LIGHTING CONTROL**  
COMPLIANCE WITH ENERGY CODE IS ACHIEVED BY:  
1. ONCE THE EMS HAS BEEN PROGRAMMED, THE INTERIOR AND EXTERIOR LIGHTS WILL TURN ON AND OFF USING THE FOLLOWING LOGIC: SEE EMS SHEETS.  
INTERIOR WORK LIGHTS WILL TURN ON WITH FIRST MOTION IN THE STORE AND WILL TURN OFF 15 MINUTES AFTER LAST MOTION ONCE THE STORE IS CLOSED.  
INTERIOR SALES LIGHTS WILL TURN ON AT STORE OPENING AND TURN OFF 15 MINUTES AFTER STORE CLOSING.  
EXTERIOR SITE LIGHTS WILL TURN ON WHEN THERE IS ENOUGH LIGHT OUTSIDE ANYTIME DURING STORE HOURS, AND WILL TURN OFF AT STORE CLOSING.  
EXTERIOR SITE LIGHTS WILL TURN OFF WHEN DARK ENOUGH OUTSIDE AND IT IS WITHIN STORE HOURS OR WHEN THERE IS MOTION IN THE STORE. THEY WILL TURN OFF 30 MINUTES AFTER LAST MOTION ONCE THE STORE IS CLOSED.  
FOR NEW STRUCTURE LOCATIONS ONLY, THERE IS A TEMPORARY PROGRAM TO KEEP SIGN AND SITE LIGHTS ON AT ALL TIMES RATHER THAN THE TIMES INDICATED ABOVE. O'REILLY WILL DISABLE THIS PROGRAM ONE YEAR AFTER STORE OPENING.  
2. RESTROOMS AND OFFICES: ALL LIGHTING IN THESE AREAS ARE CONTROLLED BY OCCUPANT-SENSING DEVICES.

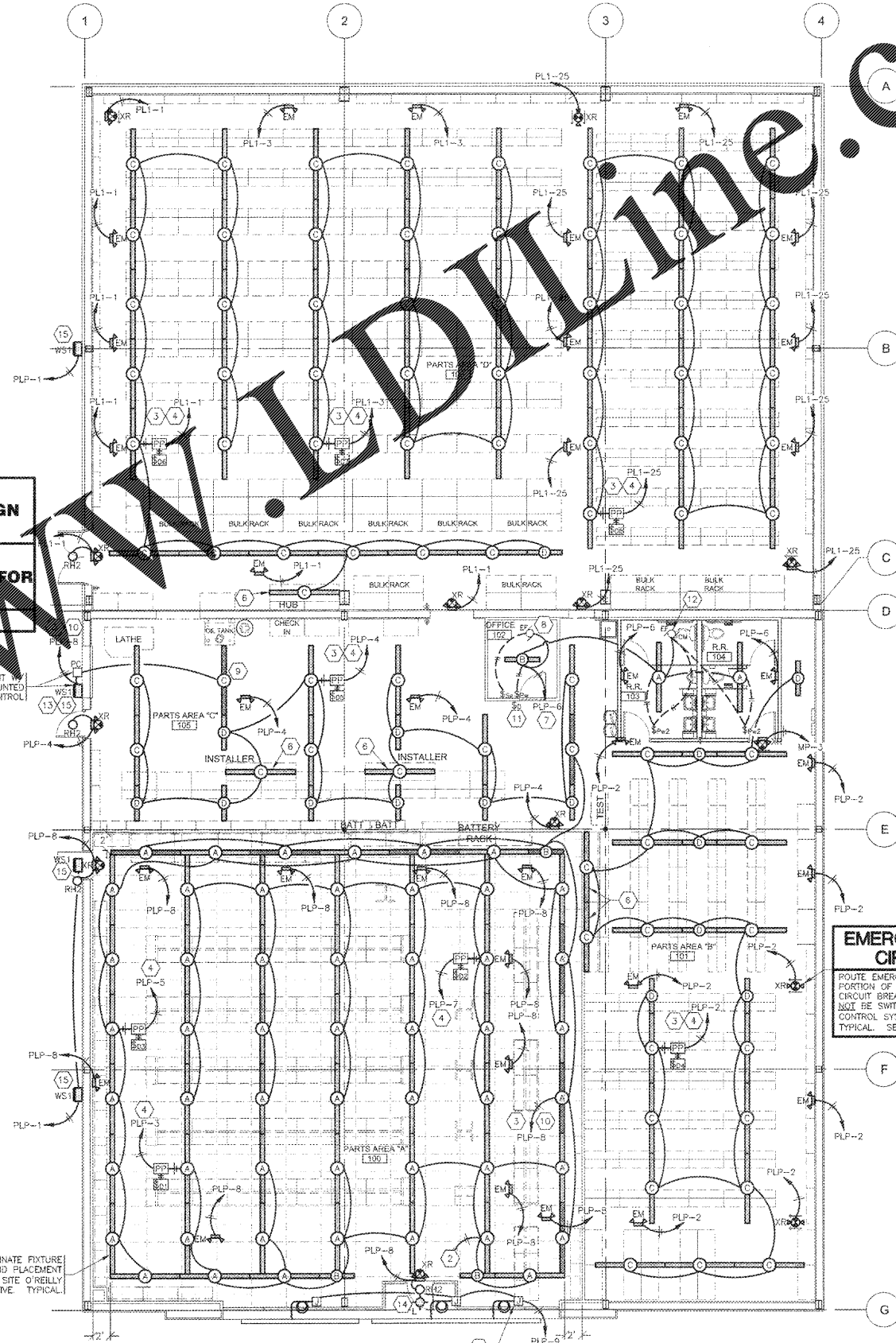
**LIGHTING - KEYNOTES**

- RE-USE EXISTING J-BOX INSIDE BUILDING & FLEX NEW CONDUIT THRU WALL FOR POWER SUPPLY TO NEW ILLUMINATED SIGN. EXACT LOCATIONS OF PENETRATIONS SHALL BE COORDINATED WITH SIGN COMPANY. PENETRATIONS SHALL BE BEHIND SIGNAGE. WATERPROOF W/ ELASTOMERIC POLYURETHANE (NO EXCEPTIONS) EQUAL TO "VULKEN" 118. WIRE TO SIGN WITH 15' OF WIRING "WHIP" (SHALL BE FLEX OR TYPE MC CABLE). COIL AND "CABLE TIE" WIRING "WHIP" TO WALL ABOVE CEILING. TYPICAL.
- TO "OPEN" SIGN. SEE SHEET E2.
- SEE "E" PANEL TRANSFER SWITCH SCHEDULE FOR POSITION OF CIRCUIT WIRES THROUGH TRANSFER SWITCH.
- CIRCUIT THRU EXISTING GROUPOINT ADM-1204 SYSTEM. SEE 3/E1.
- NOT USED.
- SUSPEND 8'-0" A.F.F. THIS FIXTURE ONLY.
- ROUTE THE OFFICE AND RESTROOM'S LIGHTING CIRCUIT THRU THE LOCAL OCCUPANCY SENSORS AND DIRECTLY TO THE CIRCUIT BREAKER. THESE FIXTURES SHALL NOT BE SWITCHED BY THE LIGHTING CONTROL PANEL. SEE "E" PANEL TRANSFER SWITCH SCHEDULE FOR POSITION CIRCUIT WIRES THROUGH TRANSFER SWITCH.
- ELECTRICAL CONTRACTOR TO WIRE EXHAUST FAN TO SPEED SWITCH. REFER TO FAN SCHEDULE ON SHEET ME1.
- SECURITY & EGRESS FIXTURE TO BE AS CLOSE AS POSSIBLE BUT NOT OVER THE OVERHEAD DOOR WHEN OPEN.
- ROUTE SECURITY & EGRESS LIGHTING CIRCUIT DIRECTLY TO THE ELECTRICAL PANEL.
- DIMMER LIGHTING CONTROL UNITS LOCATED ON OUTSIDE WALL. SEE LIGHTING PLAN FOR QUANTITY. SEE DETAIL 1/E4, AND 3/E4.
- ELECTRICAL CONTRACTOR TO WIRE NEW EXHAUST FAN TO PUMP ON WHEN OTHER BATHROOM LIGHT IS ON USING DOUBLE-PHASE WIRE SWITCH. SEE DETAIL 2/E1.
- REPLACE EXISTING WALL LIGHT WITH NEW LED "WS1" LIGHT. FIELD VERIFY EXACT LOCATION. EXISTING LIGHTING CIRCUIT TO REMAIN AS IS.
- REPLACE EXISTING RECESSED LIGHT WITH NEW LED "L" LIGHT. FIELD VERIFY EXACT LOCATION. EXISTING LIGHTING CIRCUIT TO REMAIN AS IS.
- REFER TO ARCHITECTURAL ELEVATIONS SHEETS SHOWING DIMENSIONED LOCATIONS. TYPICAL ALL WALL SCONCES.

**LIGHTING SCOPE OF WORK**

**EXISTING LIGHTING:** ALL EXISTING INTERIOR LIGHTING SHALL BE REMOVED.  
**EMERGENCY MANAGEMENT SYSTEM:** EXISTING GROUPOINT ADM-1204 TO REMAIN AS IS. CONTRACTOR SHALL CONNECT NEW LIGHTING THROUGHOUT TO EXISTING EMERGENCY MANAGEMENT SYSTEM (EMS). FIELD VERIFY LOCATION OF EXISTING EMS.  
**NEW LIGHTING:** CONTRACTOR SHALL INSTALL ALL NEW LED LIGHTING THROUGHOUT CIRCUIT AS SHOWN TO EXISTING PANELS AND EMERGENCY MANAGEMENT SYSTEM.  
**CEILING:** ARCHITECTURAL PLAN FOR ANY CEILING GRID CHANGES OR REMOVAL.  
**EXISTING WALL SCONCES:** REMOVE EXISTING AND REPLACE WITH NEW L.E.D.  
**NEW WALL SCONCES:** CONTRACTOR TO INSTALL NEW LED WALL SCONCES AT NEW LOCATIONS.

**SEISMIC RESTRAINTS (ONLY REQUIRED FOR SEISMIC DESIGN CATEGORIES C,D,E,F)**  
**CONTRACTOR TO REFER TO ARCHITECTURAL SHEET G14 FOR SEISMIC DESIGN CATEGORY.**  
IF REQUIRED SEE SEISMIC DETAILS SHEET ME1.



**ORDER**



**O'Reilly AUTO PARTS**  
CORPORATE OFFICES  
233 SOUTH PATTERSON  
SPRINGFIELD, MISSOURI 65802  
(417) 862-2674 TELEPHONE

PROJECT: BUILDING ADDITION  
**O'REILLY AUTO PARTS STORE**  
1040 SOUTH MCKENZIE STREET  
FOLEY, ALABAMA  
**LIGHTING PLAN**

3885 S. JEFFERSON AVE.  
SPRINGFIELD, MO 65807  
P: 417-882-2640  
F: 417-882-1188  
WWW.OREILLYAUTO.COM

**SGE**  
SOUTH-GUYTON ENGINEERS, INC.

DRAWN BY: CEV  
CHECKED BY: NEG  
DATE: 10/12/18  
REVISION:  
PROJECT NUMBER: FOL-1133

SHEET NUMBER: **E1**

REPRODUCTION PROHIBITED WITHOUT THE EXPRESSED WRITTEN CONSENT OF THE DESIGN PROFESSIONAL. DESIGNS, DRAWINGS AND SPECIFICATIONS ARE INSTRUMENTS OF SERVICE AND ARE THE PROPERTY OF THE DESIGN PROFESSIONAL. COPYRIGHT 2018-2019