

- EXISTING CONDITIONS NOTES**
1. THE CONTRACTOR IS OBLIGATED TO INSPECT FOR EXISTING CONDITIONS/INSTALLATIONS AND AVAILABLE INFORMATION PRIOR TO SUBMITTING A BID, REFER TO SPECIFICATIONS ALSO.
 2. EXISTING INSTALLATIONS (SUCH AS WATER MAINS/LINES, GAS MAINS/LINES, SEWER MAINS/LINES, TELEPHONE LINES, POWER LINES, AND UTILITY STRUCTURES IN THE VICINITY OF THE WORK TO BE DONE) ARE INDICATED ON THE DRAWINGS ONLY TO THE EXTENT THAT SUCH INFORMATION HAS BEEN MADE AVAILABLE TO OR DISCOVERED BY THE ENGINEER IN PREPARING THE DRAWINGS. THERE IS NO GUARANTEE AS TO THE ACCURACY OR COMPLETENESS OF SUCH INFORMATION, AND ALL RESPONSIBILITY FOR THE ACCURACY AND COMPLETENESS THEREOF IS EXPRESSLY DISCLAIMED.
 3. THE CONTRACTOR SHALL BE SOLELY RESPONSIBLE FOR LOCATING ALL EXISTING INSTALLATIONS.
 4. ANY DELAY, ADDITIONAL WORK, FEES OR EXTRA COST TO THE CONTRACTOR CAUSED BY OR RESULTING FROM DAMAGE TO OR MODIFICATION OF EXISTING INSTALLATIONS BY THE CONTRACTOR OR AFFECTED UTILITY COMPANY SHALL NOT CONSTITUTE A CLAIM FOR EXTRA WORK, ADDITIONAL PAYMENT OR DAMAGES.
 5. THE CONTRACTOR SHALL FIELD VERIFY ALL EXISTING CONSTRUCTION PRIOR TO SUBMITTING HIS BID. NO EXTRAS WILL BE PAID DUE TO UNANTICIPATED EXISTING CONDITIONS/INSTALLATIONS.

GENERAL NOTE:
PRIOR TO INSTALLATION, GENERAL CONTRACTOR SHALL CONFIRM THAT LIGHT POLES, LANDSCAPING AND UTILITIES DO NOT CONFLICT WITH SIGN LOCATION SHOWN. IF ANY POTENTIAL CONFLICT IS DISCOVERED, GENERAL CONTRACTOR SHALL CONTACT THE O'REILLY PROJECT ADMINISTRATOR BEFORE PROCEEDING.

STOP-CALL BEFORE YOU DIG!

811

UTILITIES CONTACTS:

ELECTRIC: RIVERA UTILITIES, LEON BARBER, 261-943-5001
WATER: RIVERA UTILITIES, TONY SCHACHLE, 261-970-4110

CONTRACTOR TO CONTACT UTILITY COMPANIES FOR TAPPING AND FINAL CONNECTION RESPONSIBILITIES.

NEW UTILITIES

W	WATER SERVICE	P.O.C. = POINT OF CONNECTION BETWEEN SITE PIPING (SPEC 02700) AND BUILDING PIPING (SPEC 21 13 13, 22 00 00), AS NECESSARY - SPEC 21 13 13 DENOTES LANDSCAPE IRRIGATION).
IR	IRRIGATION SERVICE	
UE	UNDERGROUND ELECTRIC	
UGT	UNDERGROUND TELEPHONE	
S	SANITARY SEWER	
OHE	OVERHEAD ELECTRIC	
OHT	OVERHEAD TELEPHONE	
G	GAS SERVICE (BY GAS CO.)	
SC	SAW CUT	
B	BORE	
G	GRAVEL	

F.O.C. FROM THE BUILDING PIPING TO THE SITE PIPING IS 5 FEET AWAY FROM BUILDING

SAWCUT NOTE

WHERE NEW UTILITY SERVICES ARE ROUTED UNDER EXISTING PAVED AREAS, ALL EXISTING PAVING SHALL BE REMOVED IN THE FOLLOWING STEPS:

- 1) SAWCUTTING PAVING, CONCRETE CURB & GUTTER.
- 2) REMOVAL & TRENCHING.
- 3) INSTALLATION OF UTILITY.
- 4) BACKFILL & COMPACTION.
- 5) INSTALLATION OF NEW PAVING, CONCRETE CURB & GUTTER THAT MATCHES THE EXISTING SURROUNDING PAVING, CURB & GUTTER IN BOTH MATERIAL & ELEVATION.

CONTRACTOR SHALL COORDINATE, OBTAIN & PAY FOR ALL REQUIRED PERMITS & LICENSES TO PERFORM THIS WORK & SHALL BE RESPONSIBLE FOR ALL TRAFFIC CONTROL WHILE PERFORMING SAWCUTTING OPERATIONS AS NECESSARY.

ADM-1204 KEYNOTE

1 VIA EXISTING ADM-1204 / LIGHTING CONTROL PANEL.

STATE OF ALABAMA LIMITATION

I HEREBY CERTIFY THAT THESE ENGINEERING DOCUMENTS WERE PREPARED BY ME OR UNDER MY DIRECT PERSONAL SUPERVISION AND THAT I AM A DULY LICENSED PROFESSIONAL ENGINEER UNDER THE LAWS OF THE STATE OF ALABAMA.

NORMAN S. GIBBY (DATE) 2/8/19

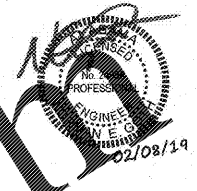
LICENSE RENEWAL DATE IS DECEMBER 31, 2019

PAGES OR SHEETS COVERED BY THE SEAL: US1, SP1, SP2, M1, P1, M2, M3, E1, E2, E3, AND E4.

THE ABOVE-DATED DRAWINGS ARE VALID AND AUTHENTIC ONLY IF EACH COPIED SHEET BEARS THE SEAL, SIGNATURE, AND DATE AFFIXED TO THE ORIGINAL DRAWING BY THE ENGINEER.

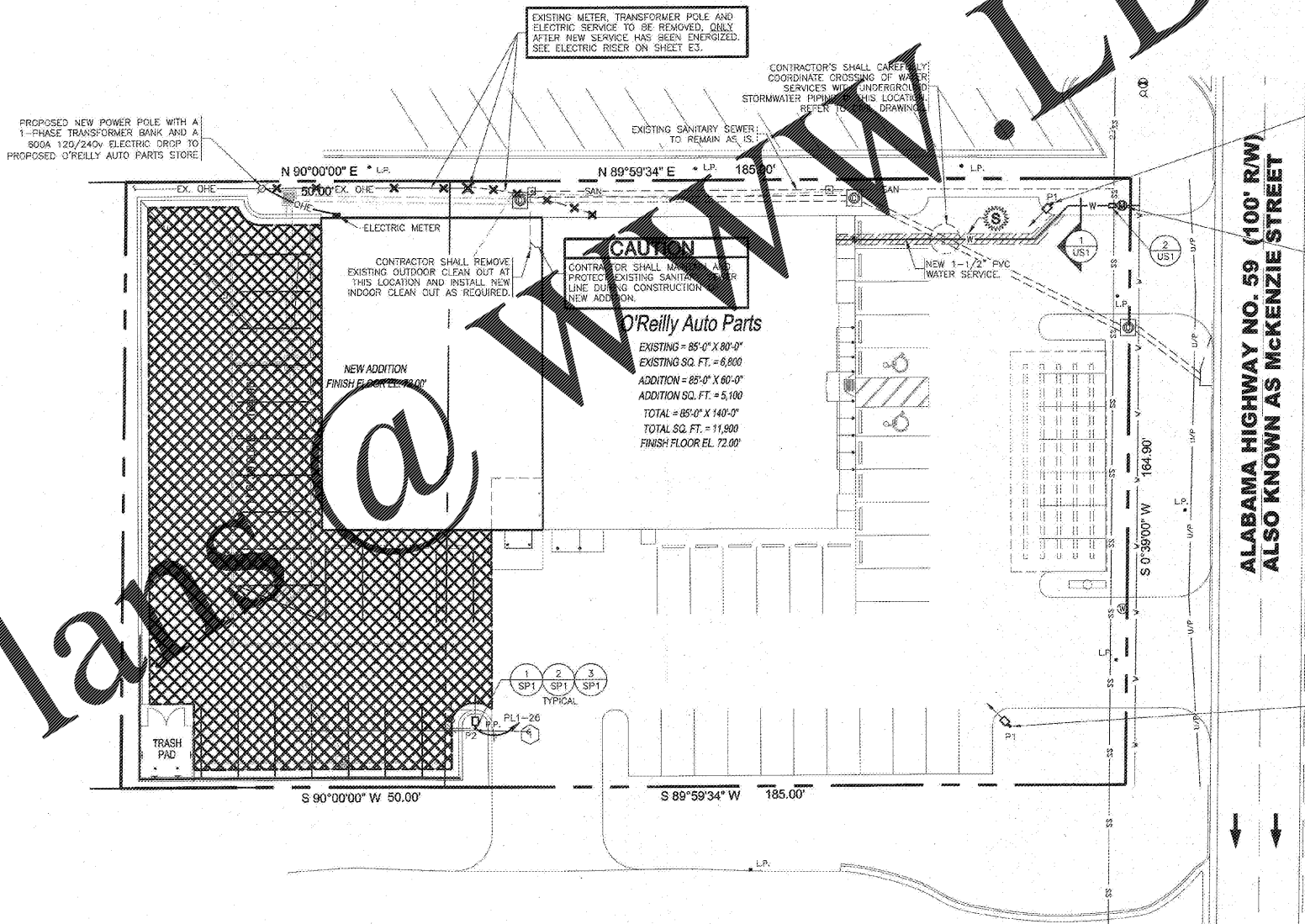
THE AUTHORITY AND COPYRIGHT OF THE ABOVE-DATED DRAWINGS AND SPECIFICATIONS REMAIN WITH THE ENGINEER. ANY CHANGES BY OTHERS ARE AUTHORIZED ONLY IF AN INSTRUMENT OF SERVICE AND ARE INTENDED FOR USE ON THE INDICATED PROJECT ONLY. THEY SHALL NOT BE REPRODUCED OR USED FOR ANY OTHER WORK WITHOUT THE WRITTEN PERMISSION OF THE ENGINEER.

PAGES OF SHEETS DESIGNATED AS INCLUDED ONLY FOR REFERENCE: EM1, EM2, EM3, EM4, EM5, EM6, EM7, EM8, EM9, EM10, EM11, EM12, EM13, EM14, EM15, EM16, EM17, EM18, EM19, EM20, EM21, EM22, EM23, EM24, EM25, EM26, EM27, EM28, EM29, EM30, EM31, EM32, EM33, EM34, EM35, EM36, EM37, EM38, EM39, EM40, EM41, EM42, EM43, EM44, EM45, EM46, EM47, EM48, EM49, EM50, EM51, EM52, EM53, EM54, EM55, EM56, EM57, EM58, EM59, EM60, EM61, EM62, EM63, EM64, EM65, EM66, EM67, EM68, EM69, EM70, EM71, EM72, EM73, EM74, EM75, EM76, EM77, EM78, EM79, EM80, EM81, EM82, EM83, EM84, EM85, EM86, EM87, EM88, EM89, EM90, EM91, EM92, EM93, EM94, EM95, EM96, EM97, EM98, EM99, EM100, EM101, EM102, EM103, EM104, EM105, EM106, EM107, EM108, EM109, EM110, EM111, EM112, EM113, EM114, EM115, EM116, EM117, EM118, EM119, EM120, EM121, EM122, EM123, EM124, EM125, EM126, EM127, EM128, EM129, EM130, EM131, EM132, EM133, EM134, EM135, EM136, EM137, EM138, EM139, EM140, EM141, EM142, EM143, EM144, EM145, EM146, EM147, EM148, EM149, EM150, EM151, EM152, EM153, EM154, EM155, EM156, EM157, EM158, EM159, EM160, EM161, EM162, EM163, EM164, EM165, EM166, EM167, EM168, EM169, EM170, EM171, EM172, EM173, EM174, EM175, EM176, EM177, EM178, EM179, EM180, EM181, EM182, EM183, EM184, EM185, EM186, EM187, EM188, EM189, EM190, EM191, EM192, EM193, EM194, EM195, EM196, EM197, EM198, EM199, EM200, EM201, EM202, EM203, EM204, EM205, EM206, EM207, EM208, EM209, EM210, EM211, EM212, EM213, EM214, EM215, EM216, EM217, EM218, EM219, EM220, EM221, EM222, EM223, EM224, EM225, EM226, EM227, EM228, EM229, EM230, EM231, EM232, EM233, EM234, EM235, EM236, EM237, EM238, EM239, EM240, EM241, EM242, EM243, EM244, EM245, EM246, EM247, EM248, EM249, EM250, EM251, EM252, EM253, EM254, EM255, EM256, EM257, EM258, EM259, EM260, EM261, EM262, EM263, EM264, EM265, EM266, EM267, EM268, EM269, EM270, EM271, EM272, EM273, EM274, EM275, EM276, EM277, EM278, EM279, EM280, EM281, EM282, EM283, EM284, EM285, EM286, EM287, EM288, EM289, EM290, EM291, EM292, EM293, EM294, EM295, EM296, EM297, EM298, EM299, EM300, EM301, EM302, EM303, EM304, EM305, EM306, EM307, EM308, EM309, EM310, EM311, EM312, EM313, EM314, EM315, EM316, EM317, EM318, EM319, EM320, EM321, EM322, EM323, EM324, EM325, EM326, EM327, EM328, EM329, EM330, EM331, EM332, EM333, EM334, EM335, EM336, EM337, EM338, EM339, EM340, EM341, EM342, EM343, EM344, EM345, EM346, EM347, EM348, EM349, EM350, EM351, EM352, EM353, EM354, EM355, EM356, EM357, EM358, EM359, EM360, EM361, EM362, EM363, EM364, EM365, EM366, EM367, EM368, EM369, EM370, EM371, EM372, EM373, EM374, EM375, EM376, EM377, EM378, EM379, EM380, EM381, EM382, EM383, EM384, EM385, EM386, EM387, EM388, EM389, EM390, EM391, EM392, EM393, EM394, EM395, EM396, EM397, EM398, EM399, EM400, EM401, EM402, EM403, EM404, EM405, EM406, EM407, EM408, EM409, EM410, EM411, EM412, EM413, EM414, EM415, EM416, EM417, EM418, EM419, EM420, EM421, EM422, EM423, EM424, EM425, EM426, EM427, EM428, EM429, EM430, EM431, EM432, EM433, EM434, EM435, EM436, EM437, EM438, EM439, EM440, EM441, EM442, EM443, EM444, EM445, EM446, EM447, EM448, EM449, EM450, EM451, EM452, EM453, EM454, EM455, EM456, EM457, EM458, EM459, EM460, EM461, EM462, EM463, EM464, EM465, EM466, EM467, EM468, EM469, EM470, EM471, EM472, EM473, EM474, EM475, EM476, EM477, EM478, EM479, EM480, EM481, EM482, EM483, EM484, EM485, EM486, EM487, EM488, EM489, EM490, EM491, EM492, EM493, EM494, EM495, EM496, EM497, EM498, EM499, EM500, EM501, EM502, EM503, EM504, EM505, EM506, EM507, EM508, EM509, EM510, EM511, EM512, EM513, EM514, EM515, EM516, EM517, EM518, EM519, EM520, EM521, EM522, EM523, EM524, EM525, EM526, EM527, EM528, EM529, EM530, EM531, EM532, EM533, EM534, EM535, EM536, EM537, EM538, EM539, EM540, EM541, EM542, EM543, EM544, EM545, EM546, EM547, EM548, EM549, EM550, EM551, EM552, EM553, EM554, EM555, EM556, EM557, EM558, EM559, EM560, EM561, EM562, EM563, EM564, EM565, EM566, EM567, EM568, EM569, EM570, EM571, EM572, EM573, EM574, EM575, EM576, EM577, EM578, EM579, EM580, EM581, EM582, EM583, EM584, EM585, EM586, EM587, EM588, EM589, EM590, EM591, EM592, EM593, EM594, EM595, EM596, EM597, EM598, EM599, EM600, EM601, EM602, EM603, EM604, EM605, EM606, EM607, EM608, EM609, EM610, EM611, EM612, EM613, EM614, EM615, EM616, EM617, EM618, EM619, EM620, EM621, EM622, EM623, EM624, EM625, EM626, EM627, EM628, EM629, EM630, EM631, EM632, EM633, EM634, EM635, EM636, EM637, EM638, EM639, EM640, EM641, EM642, EM643, EM644, EM645, EM646, EM647, EM648, EM649, EM650, EM651, EM652, EM653, EM654, EM655, EM656, EM657, EM658, EM659, EM660, EM661, EM662, EM663, EM664, EM665, EM666, EM667, EM668, EM669, EM670, EM671, EM672, EM673, EM674, EM675, EM676, EM677, EM678, EM679, EM680, EM681, EM682, EM683, EM684, EM685, EM686, EM687, EM688, EM689, EM690, EM691, EM692, EM693, EM694, EM695, EM696, EM697, EM698, EM699, EM700, EM701, EM702, EM703, EM704, EM705, EM706, EM707, EM708, EM709, EM710, EM711, EM712, EM713, EM714, EM715, EM716, EM717, EM718, EM719, EM720, EM721, EM722, EM723, EM724, EM725, EM726, EM727, EM728, EM729, EM730, EM731, EM732, EM733, EM734, EM735, EM736, EM737, EM738, EM739, EM740, EM741, EM742, EM743, EM744, EM745, EM746, EM747, EM748, EM749, EM750, EM751, EM752, EM753, EM754, EM755, EM756, EM757, EM758, EM759, EM760, EM761, EM762, EM763, EM764, EM765, EM766, EM767, EM768, EM769, EM770, EM771, EM772, EM773, EM774, EM775, EM776, EM777, EM778, EM779, EM780, EM781, EM782, EM783, EM784, EM785, EM786, EM787, EM788, EM789, EM790, EM791, EM792, EM793, EM794, EM795, EM796, EM797, EM798, EM799, EM800, EM801, EM802, EM803, EM804, EM805, EM806, EM807, EM808, EM809, EM810, EM811, EM812, EM813, EM814, EM815, EM816, EM817, EM818, EM819, EM820, EM821, EM822, EM823, EM824, EM825, EM826, EM827, EM828, EM829, EM830, EM831, EM832, EM833, EM834, EM835, EM836, EM837, EM838, EM839, EM840, EM841, EM842, EM843, EM844, EM845, EM846, EM847, EM848, EM849, EM850, EM851, EM852, EM853, EM854, EM855, EM856, EM857, EM858, EM859, EM860, EM861, EM862, EM863, EM864, EM865, EM866, EM867, EM868, EM869, EM870, EM871, EM872, EM873, EM874, EM875, EM876, EM877, EM878, EM879, EM880, EM881, EM882, EM883, EM884, EM885, EM886, EM887, EM888, EM889, EM890, EM891, EM892, EM893, EM894, EM895, EM896, EM897, EM898, EM899, EM900, EM901, EM902, EM903, EM904, EM905, EM906, EM907, EM908, EM909, EM910, EM911, EM912, EM913, EM914, EM915, EM916, EM917, EM918, EM919, EM920, EM921, EM922, EM923, EM924, EM925, EM926, EM927, EM928, EM929, EM930, EM931, EM932, EM933, EM934, EM935, EM936, EM937, EM938, EM939, EM940, EM941, EM942, EM943, EM944, EM945, EM946, EM947, EM948, EM949, EM950, EM951, EM952, EM953, EM954, EM955, EM956, EM957, EM958, EM959, EM960, EM961, EM962, EM963, EM964, EM965, EM966, EM967, EM968, EM969, EM970, EM971, EM972, EM973, EM974, EM975, EM976, EM977, EM978, EM979, EM980, EM981, EM982, EM983, EM984, EM985, EM986, EM987, EM988, EM989, EM990, EM991, EM992, EM993, EM994, EM995, EM996, EM997, EM998, EM999, EM1000.



O'Reilly AUTO PARTS

CORPORATE OFFICES
233 SOUTH PATTERSON
SPRINGFIELD, MISSOURI 65802
(417) 862-2874 TELEPHONE

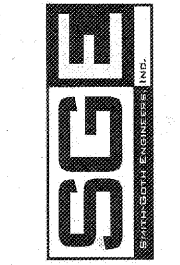


Order Plans @ O'Reilly Auto Parts

PROJECT: BUILDING ADDITION
O'REILLY AUTO PARTS STORE
1040 SOUTH MCKENZIE STREET
FOLEY, ALABAMA

UTILITIES SITE PLAN

3855 S. JEFFERSON AVE.
SPRINGFIELD, MO 65807
P: 417-882-2200
F: 417-882-1188
WWW.O'REILLY.COM



DRAWN BY: CEV
CHECKED BY: NEG
DATE: 09/28/18
REVISION: ADDENDUM 1 (02/09/19)
PROJECT NUMBER: FOL-1133
SHEET NUMBER: US1

SITE BASE PLAN
REVISED, NO
CHANGE TO MPE
SYSTEM.