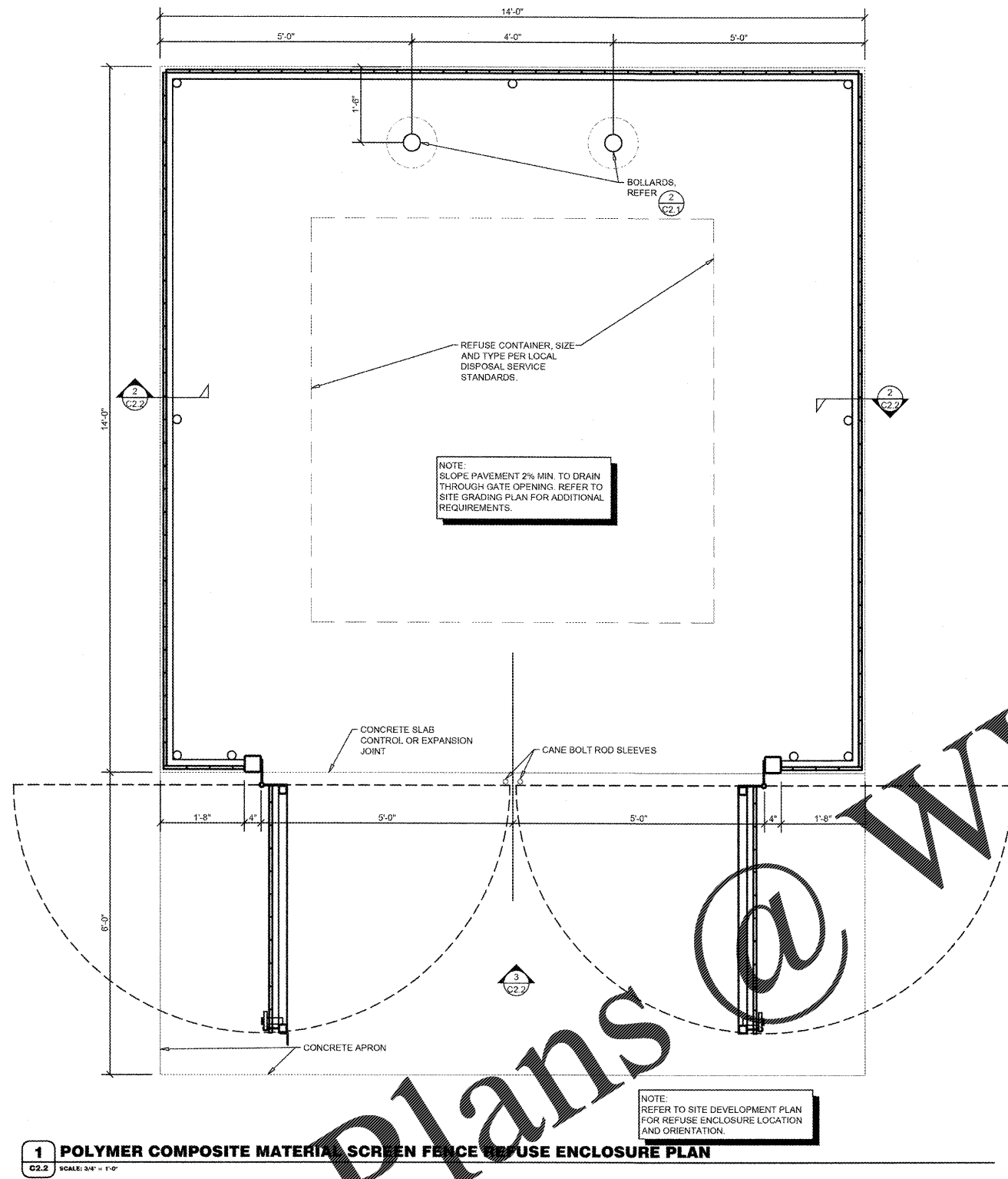
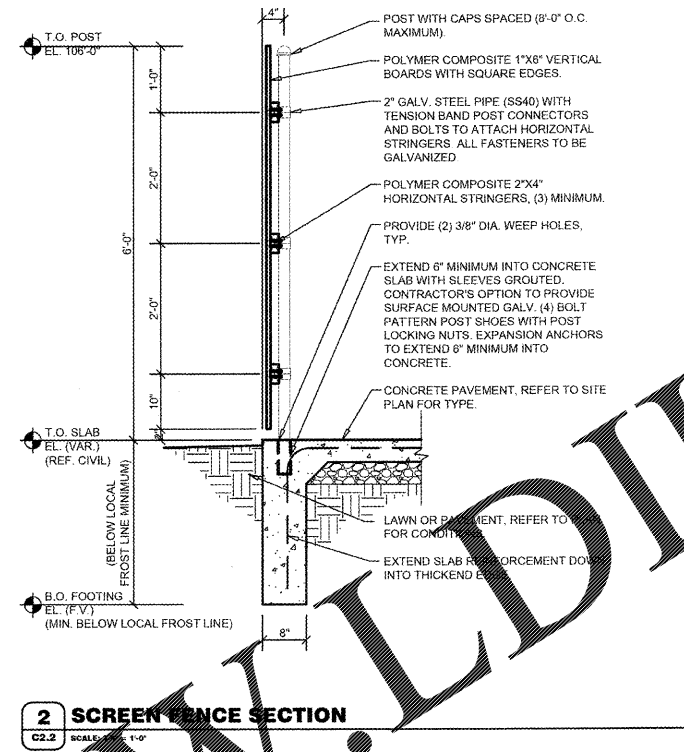


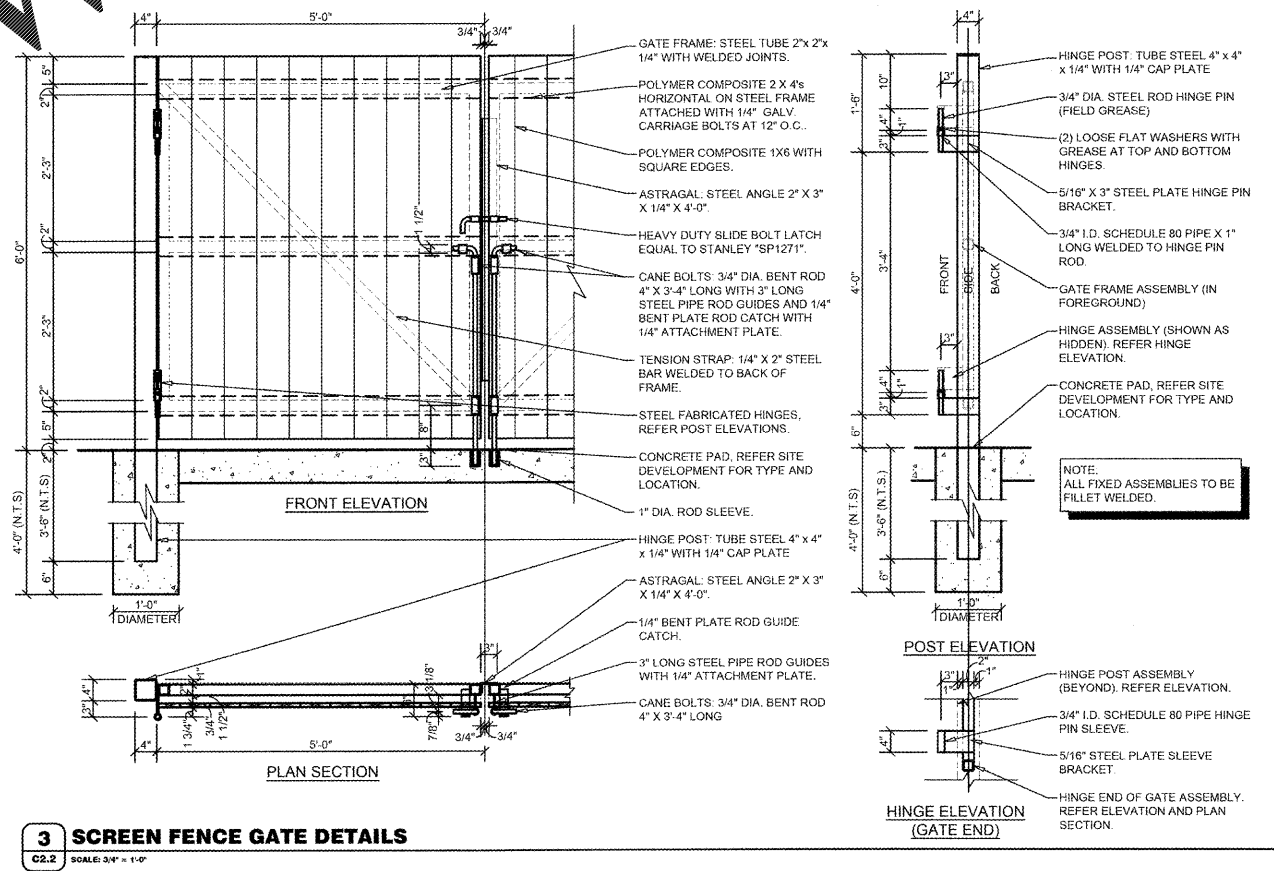
Order Plans



**1 POLYMER COMPOSITE MATERIAL SCREEN FENCE REFUSE ENCLOSURE PLAN**  
C2.2 SCALE: 3/4" = 1'-0"



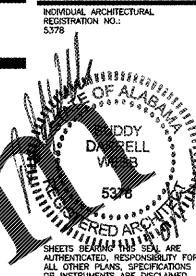
**2 SCREEN FENCE SECTION**  
C2.2 SCALE: 1'-0" = 1'-0"



**3 SCREEN FENCE GATE DETAILS**  
C2.2 SCALE: 3/4" = 1'-0"

**GENERAL NOTES**

- A REFER TO PROJECT MANUAL FOR ADDITIONAL REQUIREMENTS.
- B DIMENSIONS ARE TO ROUGH FACE OF CONCRETE, FRAMING, OR CENTER LINE OF STRUCTURE UNLESS OTHERWISE INDICATED.
- C REFER TO CIVIL DRAWINGS FOR ADDITIONAL REQUIREMENTS.
- D REFER TO ARCHITECTURAL EXTERIOR FINISH SCHEDULE FOR MATERIAL TYPES, COLORS, AND FINISHES. UNLESS OTHERWISE INDICATED PROVIDE FINISHES AS FOLLOWS:
  1. ALL NON-GALVANIZED METAL PARTS TO BE PRIMED AND PAINTED (2) COATS SHERWIN WILLIAMS SV968 "HUNT COAT".
  2. POLYMER COMPOSITE MATERIAL COLOR TO BE EQUAL TO "TREX" SELECT SERIES "PEBBLE GREY". FINISH COLOR TO BE SELECTED BY OWNER FROM MANUFACTURER'S BOARD SAMPLES.



**O'Reilly AUTO PARTS**  
CORPORATE OFFICES  
233 SOUTH PATTERSON  
SPRINGFIELD, MISSOURI 65802  
(417) 862-2674 TELEPHONE

PROJECT: (ADDITION)  
**O'REILLY AUTO PARTS STORE**  
1040 SOUTH MCKENZIE STREET  
FOLEY, ALABAMA  
**SITE DEVELOPMENT DETAILS**

**Buddy Webb, NCARB, AIA**  
**Architect - Consultant**  
3057 EAST CAIRO  
SPRINGFIELD, MISSOURI 65802  
(417) 877-1385 TELEPHONE  
(417) 877-9736 FAX

DRAWN BY: **KB** CHECKED BY: **RV**  
DATE: **09/28/18**  
REVISION:  
PROJECT NUMBER: **FOL-1133**  
SHEET NUMBER

**C2.2**

DESIGN PROFESSIONAL. REPRODUCTION PROHIBITED WITHOUT THE EXPRESSED WRITTEN CONSENT OF THE DESIGN PROFESSIONAL. COPYRIGHT 2018