

**SPECIAL NOTE:**  
PRIOR TO CONTRACT CLOSEOUT, CONTRACTOR SHALL SECURE THE SERVICES OF A REGISTERED LAND SURVEYOR TO PROVIDE SITE SURVEY OF COMPLETED PROJECT CONDITIONS AND SUBMIT FOR REVIEW AND APPROVAL BY OWNER. REFER TO PROJECT MANUAL FOR ADDITIONAL REQUIREMENTS.

ZONING CODE	
ZONING CLASSIFICATION:	B-1-A
PROPERTY AREA:	38,751 SQ. FT. (89 ACRES)
PAVEMENT AREA:	27,950 SQ. FT.
<b>PARKING SUMMARY</b>	
PARKING FORMULA:	1 SP. PER 400 SQ. FT. GFA
SPACE SIZE:	8' x 19', 9' x 18'
SPACES REQUIRED:	24
SPACES PROVIDED:	60
H.C. SPACES PROVIDED:	(2) @ 8' X 20' EXISTING

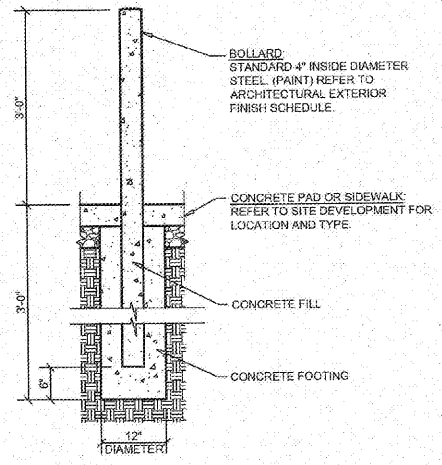
- GENERAL NOTES**
- (A) REFER TO PROJECT MANUAL FOR ADDITIONAL REQUIREMENTS. ALL ON SITE CONCRETE TO BE 4,000 PSI.
  - (B) SITE DIMENSIONS TO FACE OF CONCRETE FOUNDATION, SIDEWALK, CURB GUTTER LINE, PROPERTY LINE, OR CENTER LINE OF STRIPING UNLESS OTHERWISE NOTED.
  - (C) COORDINATE WORK WITH OTHER SITE RELATED DEVELOPMENT DRAWINGS.
  - (D) REFER TO STRUCTURAL DRAWINGS FOR BUILDING DIMENSIONS AND LAYOUT OF SIDEWALKS ADJACENT TO BUILDING PERIMETER.
  - (E) PRIOR TO INSTALLATION, CONTRACTOR TO VERIFY LOCATION OF LIGHT POLES, LANDSCAPING, AND UTILITIES DO NOT CONFLICT WITH SITE SIGN LOCATION SHEET. IF CONFLICT IS DISCOVERED, CONTRACTOR TO NOTIFY OWNER REPRESENTATIVE PRIOR TO PROCEEDING WITH THE WORK.

**SYMBOLS LEGEND**

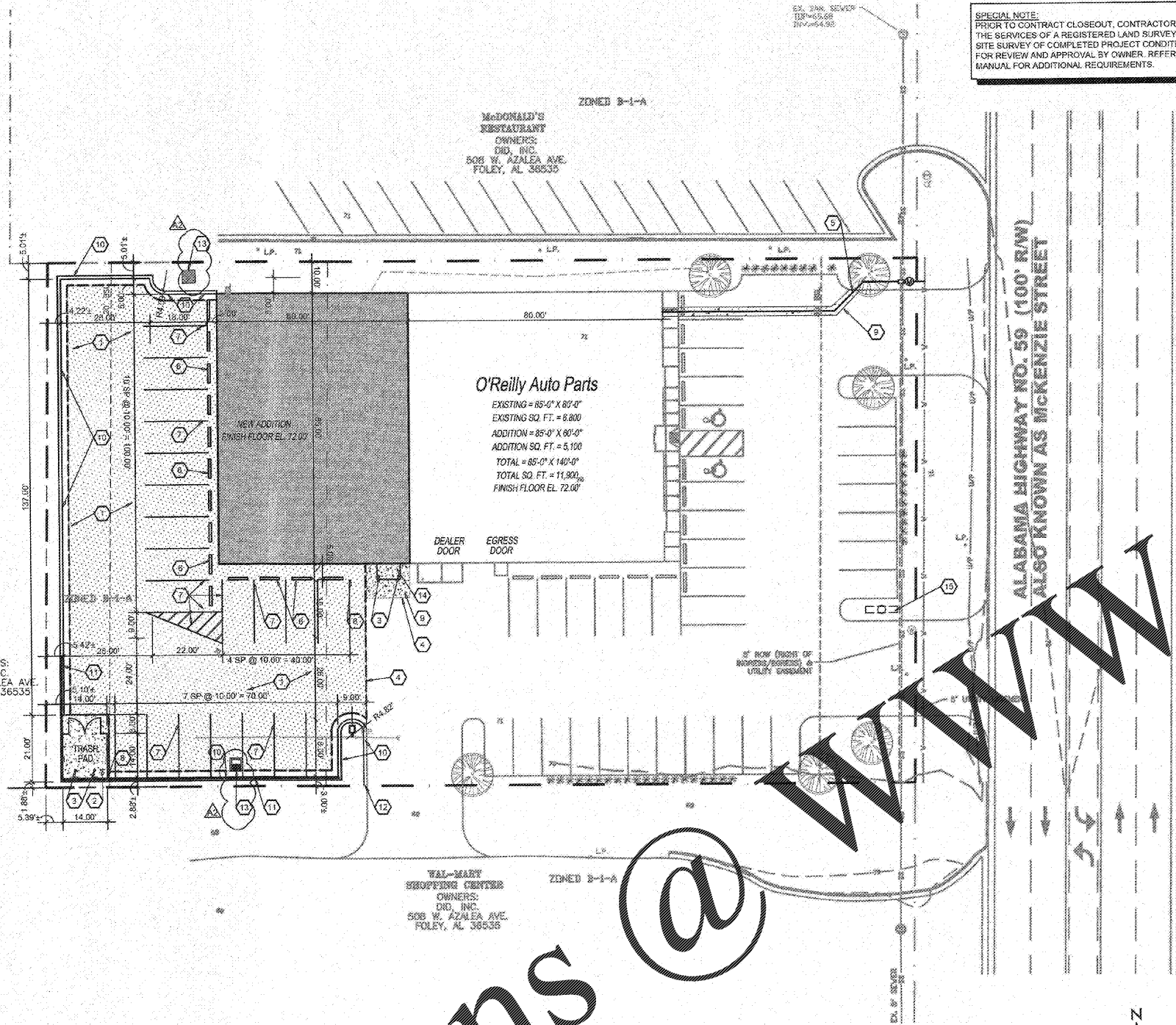
NOTE: REFER TO SURVEY FOR EXISTING CONDITIONS SYMBOLS LEGEND.

	NEW BUILDING CONSTRUCTION
	AREA CONCRETE
	AREA SYMPAVE PERVIOUS PAVERS
	EXISTING POLE SIGN LOCATION
	CONCRETE PAVING BLOCK
	NEW LIGHT POLE LOCATION
	NEW FENCE CONSTRUCTION

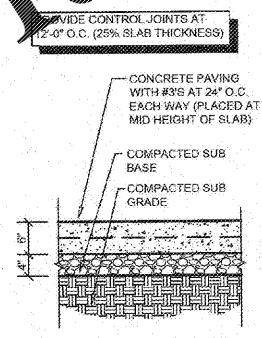
- KEY NOTES**
- (1) INSTALL APPROXIMATELY 8,871 SQ. FT. OF SYMPAVE PERVIOUS PAVERS. REFER TO SHEET C1.2 FOR SYMPAVE DETAILS.
  - (2) CONCRETE PAVING (HEAVY DUTY) AT FIRE LANES AND REFUSE AREA. REFER TO DETAIL 4C2.1.
  - (3) STEEL BOLLARD, REFER TO DETAIL 2C2.1 PROVIDE (2) AT REFUSE CONTAINER AREA.
  - (4) LIMITS OF NEW PAVING MATCH EXISTING PAVEMENT TRANSITION ELEVATIONS AT TRANSITIONS OF NEW SYMPAVE PERVIOUS PAVERS TO EXISTING CONCRETE PAVEMENT. EPOXY DOWEL 6" MINIMUM INTO EXISTING WITH #4 X 1'-6" SMOOTH DOWELS MATCHING NEW PAVEMENT REINFORCEMENT SPACING. PROVIDE SEALANT AT JOINTS.
  - (5) REPLACE EXISTING CURB AND GUTTER AS REQUIRED (MATCH EXISTING) REFER TO DETAIL 5C2.1.
  - (6) NEW CONCRETE BUMPER BLOCK (8" W X 5" H X 6'-0" LONG) ANCHORED TO PAVING WITH (2) 1" 6" LONG #4 REBAR.
  - (7) 4" WIDE PAVEMENT STRIPING AS SHOWN USING HIGHWAY MARKING PAINT - YELLOW (2 COATS).
  - (8) REFUSE ENCLOSURE, REFER TO 1C2.2.
  - (9) REPLACE EXISTING PAVEMENT AS REQUIRED FOR INSTALLATION OF NEW CONSTRUCTION. (MATCH EXISTING) AT TRANSITION OF NEW CONCRETE PAVEMENT TO EXISTING CONCRETE PAVEMENT EPOXY DOWEL 6" MINIMUM INTO EXISTING WITH #4 X 1'-6" SMOOTH DOWELS MATCHING NEW PAVEMENT REINFORCEMENT SPACING. PROVIDE SEALANT AT JOINTS.
  - (10) CONCRETE CURB, REFER TO DETAIL 5C2.1.
  - (11) CONCRETE RETAINING CURB, REFER TO SITE GRADING PLAN.
  - (12) ROLL DOWN CURB TRANSITION SLOPING 1:2.
  - (13) CONCRETE STORM WATER CONTROL SYSTEM, REFER TO SITE GRADING PLAN.
  - (14) CONCRETE DOOR LANDINGS. REFER TO DETAIL 5C2.1 AND STRUCTURAL DRAWINGS. LANDING MAY BE POURED MONOLITHIC W/ PAVING IF CONCRETE PAVING IS PROVIDED.
  - (15) EXISTING POLE SIGN TO REMAIN.



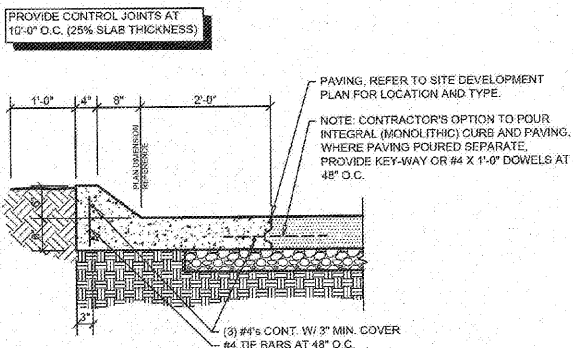
**2 STEEL BOLLARD SECTION**  
C2.1 SCALE: 3/4" = 1'-0"



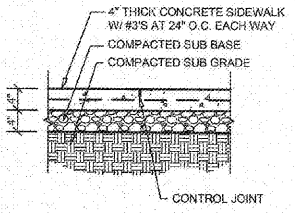
**1 SITE DEVELOPMENT PLAN**  
C2.1 SCALE: 1" = 20'-0"



**4 CONCRETE (HEAVY DUTY) PAVING SECTION**  
C2.1 SCALE: 3/4" = 1'-0"



**5 CONCRETE CURB SECTION**  
C2.1 SCALE: 3/4" = 1'-0"

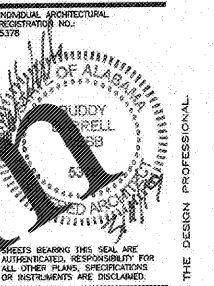


**6 CONCRETE SIDEWALK SECTION**  
C2.1 SCALE: 3/4" = 1'-0"

**CAUTION:**  
INFORMATION ON THIS DRAWING CONCERNING TYPE AND LOCATION OF UNDERGROUND AND OTHER UTILITIES IS NOT GUARANTEED TO BE ACCURATE OR ALL INCLUSIVE. THE CONTRACTOR IS RESPONSIBLE FOR MAKING HIS OWN DETERMINATION AS TO THE TYPE AND LOCATION OF UNDERGROUND AND OTHER UTILITIES AS MAY BE NECESSARY TO AVOID DAMAGE THERETO.



Know what's below  
Call before you dig.



**O'Reilly AUTO PARTS**  
CORPORATE OFFICES  
233 SOUTH PATTERSON  
SPRINGFIELD, MISSOURI 65802  
(417) 862-2674 TELEPHONE

PROJECT: (ADDITION)  
**O'REILLY AUTO PARTS STORE**  
1040 SOUTH MCKENZIE STREET  
FOLEY, ALABAMA  
**SITE DEVELOPMENT PLAN AND DETAILS**

**Buddy Webb, NCARB, AIA**  
**Architect - Consultant**  
3057 EAST CAIRO  
SPRINGFIELD, MISSOURI 65802  
(417) 877-1385 TELEPHONE  
(417) 877-9736 FAX

DESIGN BY:	CREATED BY:
KB	RV
DATE:	
09/28/18	
REVISION:	
AD2 03/11/2019	
PROJECT NUMBER:	
FOL-1133	
SHEET NUMBER:	

**C2.1**

**Order Plans**

COPYRIGHT 2018 - DESIGNS, DRAWINGS AND SPECIFICATIONS ARE INSTRUMENTS OF SERVICE AND ARE THE PROPERTY OF THE DESIGN PROFESSIONAL. REPRODUCTION PROHIBITED WITHOUT THE EXPRESSED WRITTEN CONSENT OF THE DESIGN PROFESSIONAL.