

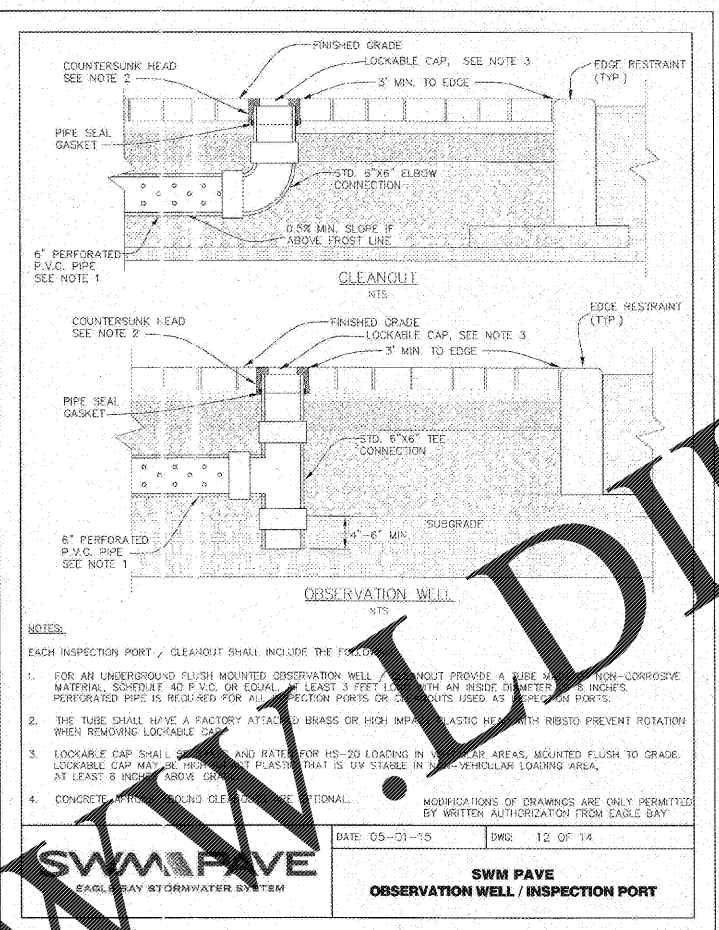
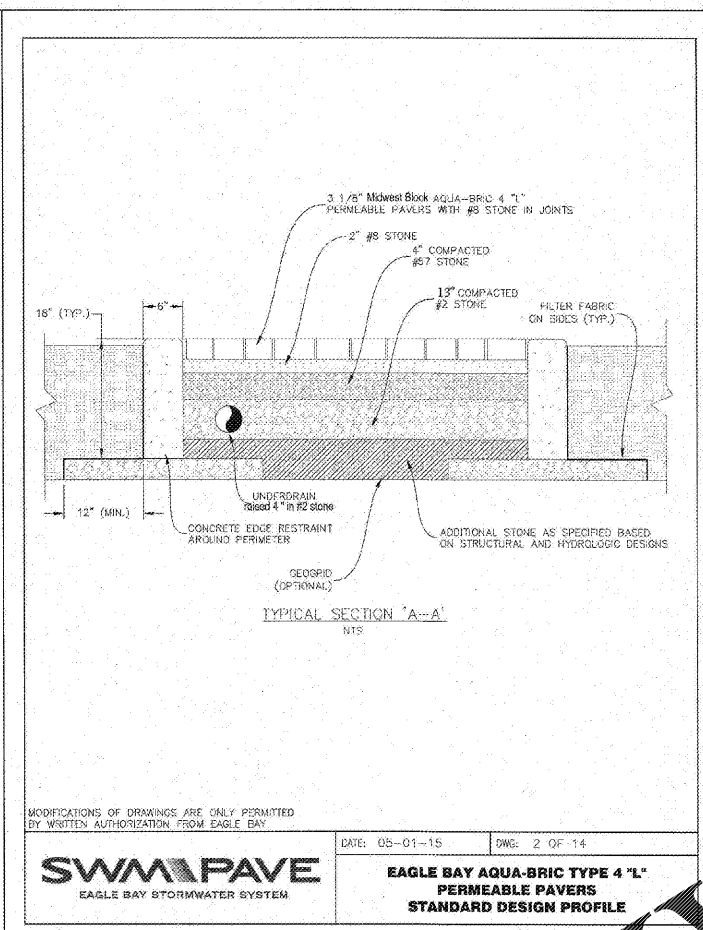
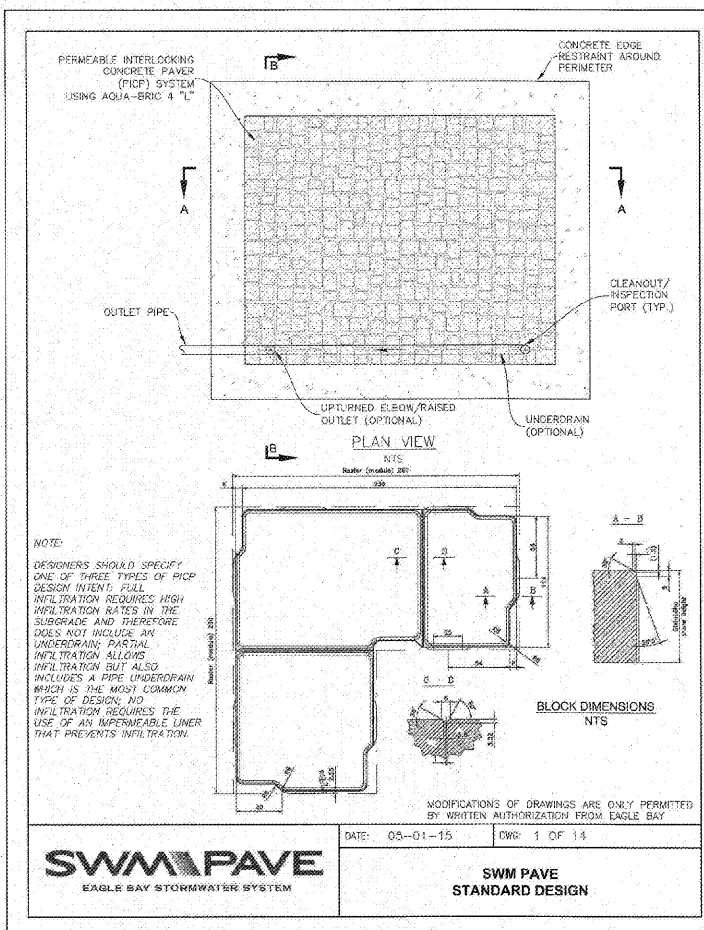
O'Reilly AUTO PARTS
CORPORATE OFFICES
233 SOUTH PATTERSON
SPRINGFIELD, MISSOURI 65802
(417) 862-2674 TELEPHONE

PROJECT: BUILDING ADDITION
O'REILLY AUTO PARTS STORE
1040 SOUTH MCKENZIE STREET
FOLEY, ALABAMA
STORMTECH DETAILS 1

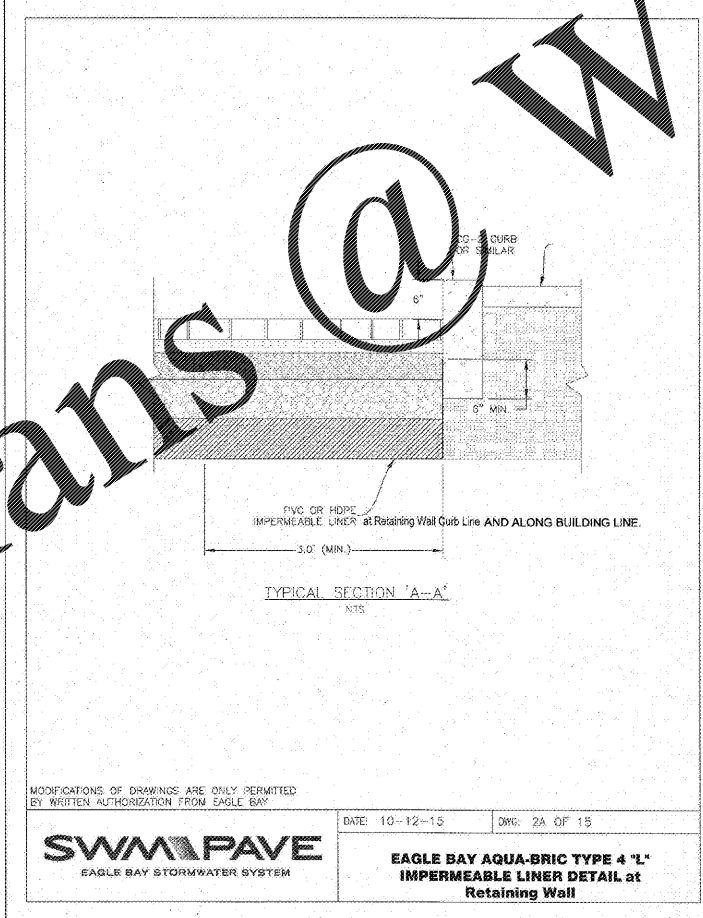
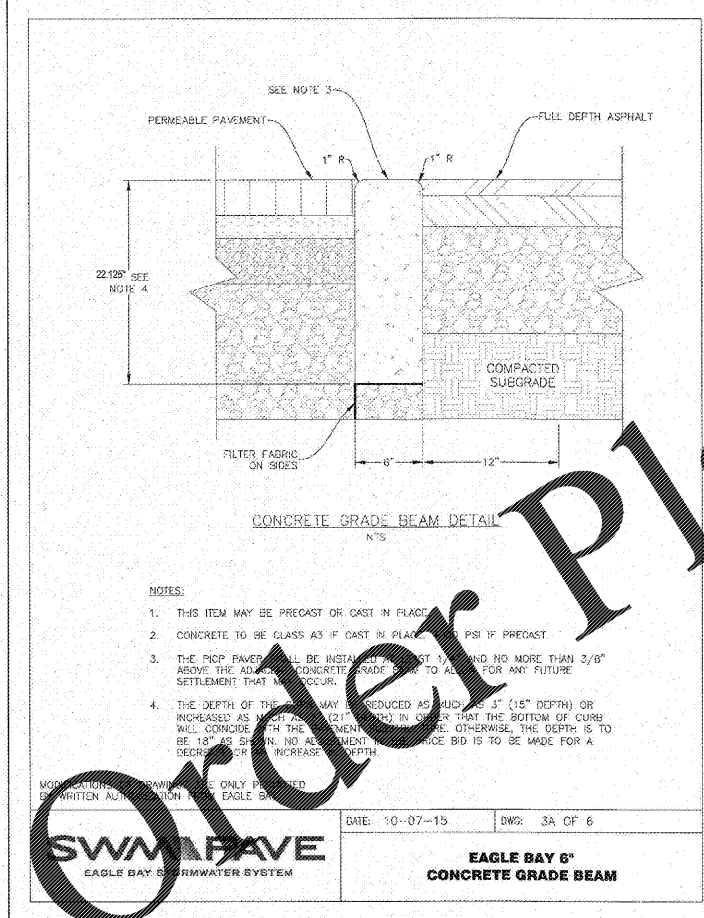
ANDERSON ENGINEERING
EMPLOYEE OWNED
ENGINEERS • SURVEYORS • LABORATORIES • DRILLING
2015 W. WOODLAND SPRINGFIELD, MISSOURI 65807 • PHONE (417) 862-2761
ANDERSON@COG.COM
PROJ.# 19SP10026 DRAWING # WB-111-120

DRAWN BY: **DN** CHECKED BY: **NB**
DATE: **09/28/18**
REVISION:
AC1 02/08/2019
PROJECT NUMBER:
FOL-1133
SHEET NUMBER

C1.2



SPECIAL NOTE:
THIS ENTIRE SHEET HAS BEEN REVISED DUE TO CITY COMMENTS AND STORMWATER REQUIREMENTS FEBRUARY 9, 2019.



PAVERS KEY NOTES:

- INSTALL SWM PAVE EAGLE BAY AQUA-BRIC TYPE 4 'L' PERMEABLE PAVERS. REFER TO DETAIL 1012.
- PROVIDE HDPE OR PVC IMPERMEABLE LINER AT EDGE OF PAVERS ALONG THE RETAINING WALL CURB LINE AND ALONG THE BUILDING. SEE IMPERMEABLE LINER STANDARD DETAIL FOR ADDITIONAL INFORMATION.
- LIMITS OF ADDITIONAL COMPACTED #2 STONE FOR DETENTION STORAGE. SUBGRADE / BASE OF STONE TO BE 6\"/>

