

WASTE PIPING NOTES:

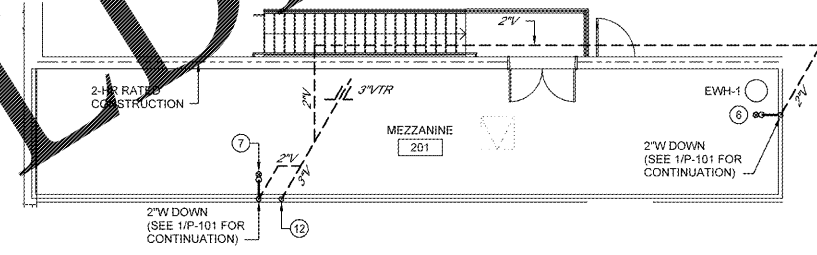
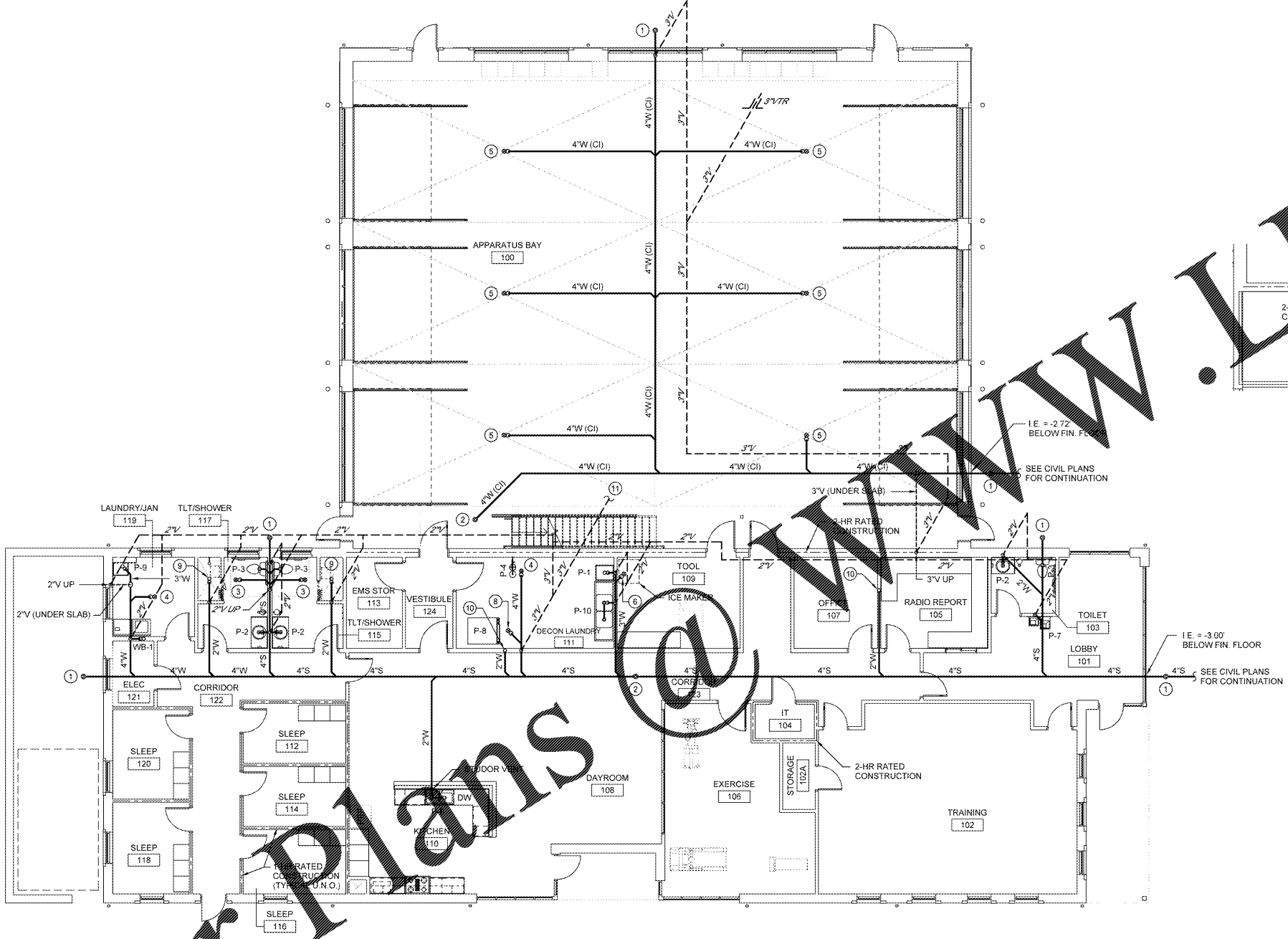
- ① - 4"-GCO
- ② - 4"-FCO
- ③ - 3"-FD-2
- ④ - 4"-FD-2
- ⑤ - 4"-FD-1 (APPARATUS BAYS)
- ⑥ - 2"-FD-2
- ⑦ - 2"-HD
- ⑧ - 4"-FD-2 (INSTALL PER MANUFACTURERS RECOMMENDATIONS)
- ⑨ - 2"-SD
- ⑩ - 2"W FROM MEZZANINE (SEE 2/P-10 FOR CONTINUATION)
- ⑪ - 3"V (SEE 2/P-10 FOR CONTINUATION)
- ⑫ - 3"V FROM BELOW (SEE 1/P-101 FOR CONTINUATION)

1980
Architects Engineers Planners Architects
JOHNSON, LABCHOBER & ASSOCIATES, P.C.
1001 W. GA. • MT. PLEASANT, SC
TEL: (706) 724-5736 • TEL: (843) 619-4656
FAX: (706) 724-3935
WWW.THEJLAGROUP.COM

CLIENT: AUGUSTA, GA
535 TELFAIR STREET, AUGUSTA, GA 30901

PROJECT NAME: **FIRE STATION #20**

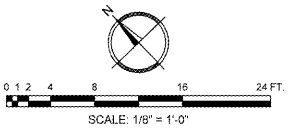
PROJECT LOCATION: 2820 OLD HIGHWAY 1, HEPHIZIBAH, GEORGIA 30815



② MEZZANINE WASTE PIPING PLAN
SCALE: 1/8" = 1'-0"

- NOTES:
- SEE PLUMBING FIXTURE SCHEDULE FOR INDIVIDUAL FIXTURE RUN-OUT SIZES.
 - PLUMBING CONTRACTOR SHALL COORDINATE UNDERGROUND PIPING WITH STRUCTURAL COLUMN AND FOOTING LOCATIONS. REROUTE PIPING AS NECESSARY TO AVOID INTERFERENCES.

① WASTE PIPING PLAN
SCALE: 1/8" = 1'-0"



PROJECT NO:	3042.1604
DRAWN BY:	WBR
CHECKED BY:	MNB
DATE:	8/10/18
SHEET TITLE:	
WASTE PIPING PLANS	
SCALE:	AS NOTED
DRAWING NO:	REV:
P-101	0

Order Plans

WWW.LDILine.com

This document is the property of Johnson, Labchober & Associates, P.C. The unauthorized reproduction, copying or otherwise use of this document is strictly prohibited and any infringement thereupon may be subject to legal action.