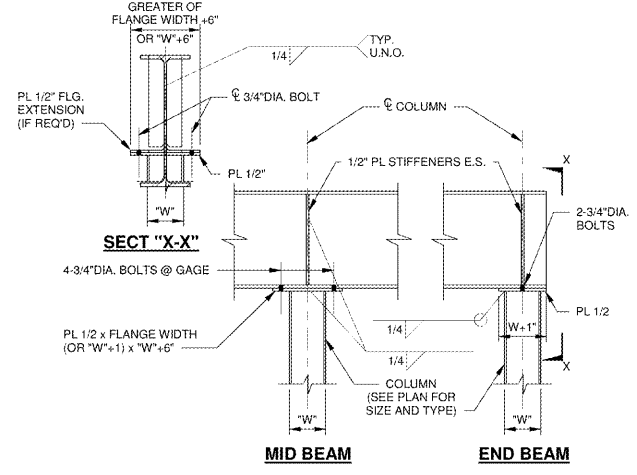


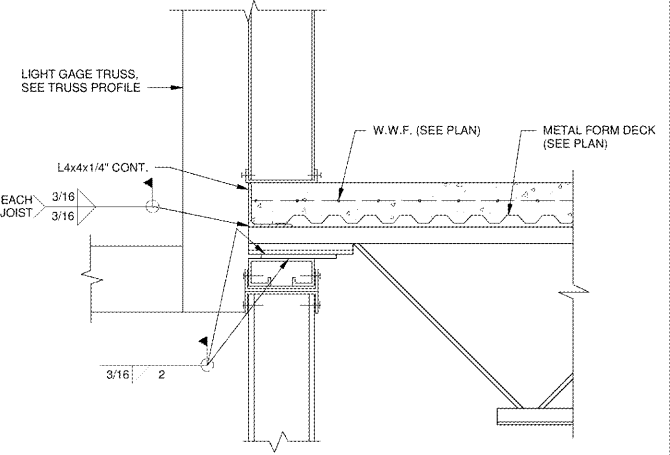
BOLT TYPE: ASTM 325, TYPE N

| BEAM SIZE      | NO. OF BOLTS PER VERT. ROW | L (in.) | T (in.) | W (in.) |
|----------------|----------------------------|---------|---------|---------|
| W6             | 1                          | 3       | 1/4     | 3/16    |
| W8 & W10       | 2                          | 6       | 1/4     | 3/16    |
| W12 & W14      | 3                          | 9       | 5/16    | 1/4     |
| W16 & W18      | 4                          | 12      | 5/16    | 1/4     |
| W21, W24 & W27 | 6                          | 18      | 3/8     | 5/16    |
| W30, W33 & W36 | 8                          | 24      | 3/8     | 5/16    |

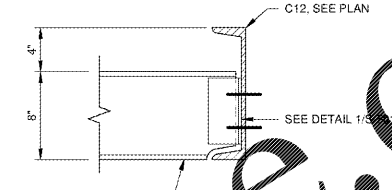
**DETAIL**  
NO SCALE



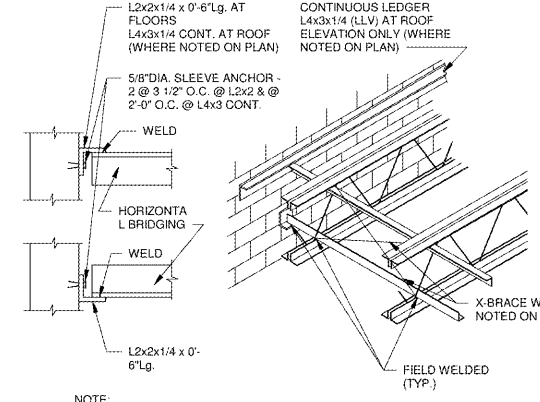
**DETAIL**  
NO SCALE



**DETAIL**  
SCALE: 1 1/2\"/>

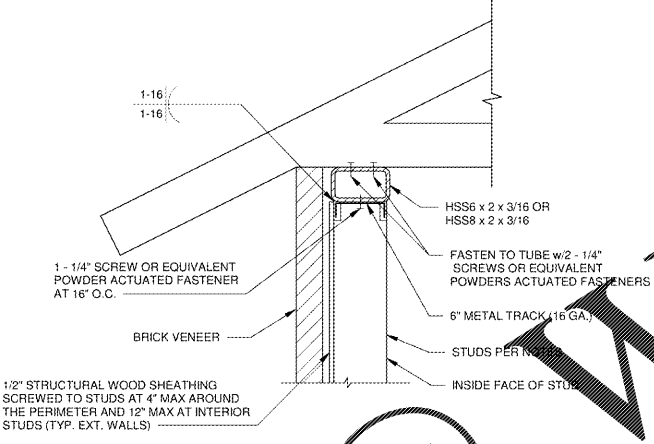


**DETAIL**  
SCALE: 1 1/2\"/>



**K OR LH SERIES**

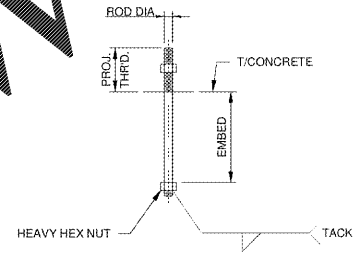
**DETAIL**  
NO SCALE



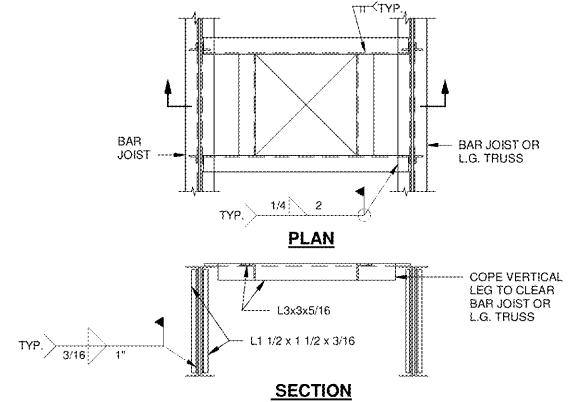
**DETAIL**  
NO SCALE

**ANCHOR BOLT DIMENSIONS**

| ROD DIA. | PROJECTION OF HEAD | EMBEDMENT LENGTH |
|----------|--------------------|------------------|
| 3/4"     | 3"                 | 12"              |
| 7/8"     | 4"                 | 15"              |
| 1"       | 4"                 | 18"              |
| 1 1/4"   | 4"                 | 21"              |

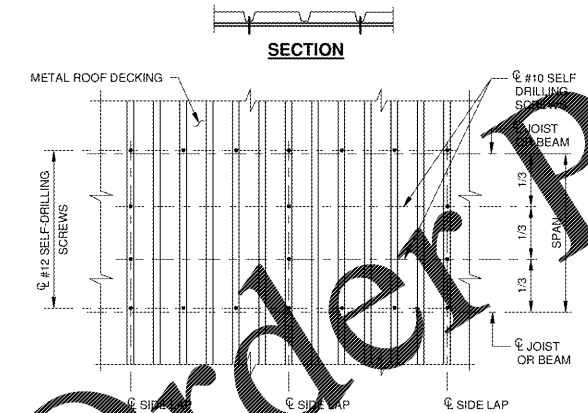


**DETAIL**  
NO SCALE



**SECTION**

**DETAIL**  
NO SCALE



**LOOSE STEEL LINTEL SCHEDULE**

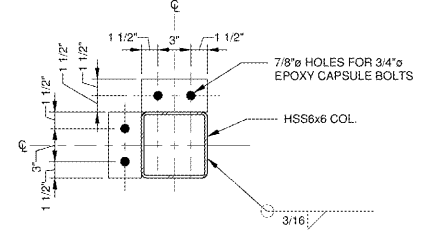
| CLEAR SPAN    | LINTEL TYPE AND SIZE |
|---------------|----------------------|
| UP TO 4'-0"   | L4 x 3-1/2 x 5/16    |
| 4'-0" - 6'-0" | L5 x 3-1/2 x 3/8     |
| 6'-0" - 8'-0" | L6 x 3-1/2 x 3/8     |

- NOTES:
- ONE ANGLE PER 4" THICKNESS OF MASONRY.
  - 6" MINIMUM BEARING EACH END OF EACH ANGLE.
  - LONG LEG SHALL BE PLACED VERTICAL.
  - ALL EXTERIOR ANGLES SHALL BE GALVANIZED.

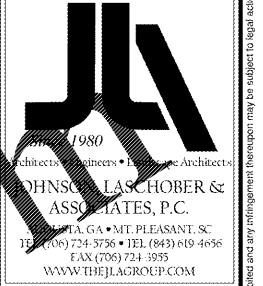
**DETAIL**  
NO SCALE

**DETAIL**  
NO SCALE

- NOTES:
- GROUT FOR SETTING BASE PLATES SHALL BE NON-SHRINK, NON-METALLIC TYPE. PLUMB COLUMN BY USING LEVELING NUTS OR STEEL WEDGES AT EDGES OF BASE PLATE AND GROUT. WHEN GROUT HAS GAINED SUFFICIENT STRENGTH TO SUPPORT LOAD (5000 PSI) ALL WEDGES AND SHIMS SHALL BE REMOVED & RESULTING VOIDS FILLED WITH GROUT BEFORE ANCHOR BOLTS ARE TIGHTENED.



**DETAIL**  
NO SCALE



CLIENT: AUGUSTA, GA  
535 TELFAIR STREET, AUGUSTA, GA 30901  
PROJECT NAME: FIRESTATION #20  
PROJECT LOCATION: 2820 OLD HIGHWAY 1, HEPHIZBAH, GEORGIA 30815

| REV. | DATE     | BY  | ISSUED FOR     | DESCRIPTION |
|------|----------|-----|----------------|-------------|
| 0    | 12/21/18 | MWL | ISSUED FOR BID |             |

PROJECT NO. 3042.1604  
DRAWN BY: CB  
CHECKED BY: MWL  
DATE: 8/10/18  
SHEET TITLE: STEEL SECTIONS AND DETAILS  
SCALE: AS NOTED  
DRAWING NO. S-501  
REV. 0

Order Plans @ www.weldline.com