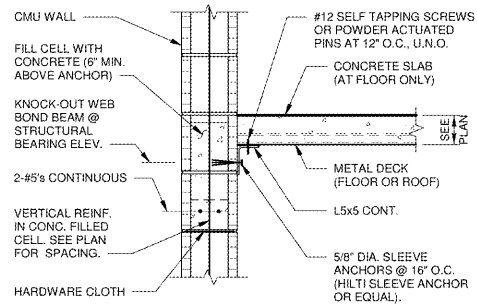
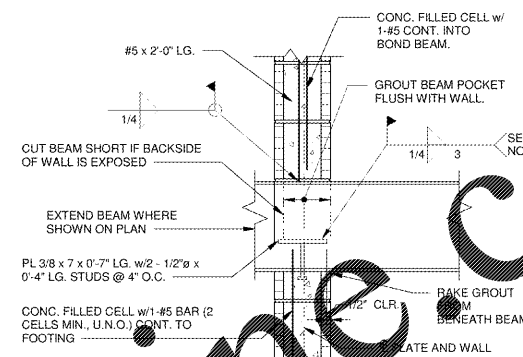


NOTE: OPENINGS LESS THAN 16" IN WIDTH AND HEIGHT NEED NOT BE REINFORCED UNLESS VERTICAL OR HORIZONTAL WALL REINFORCING IS INTERRUPTED BY THE OPENING.

**DETAIL**  
SCALE: 3/16" = 1'-0"

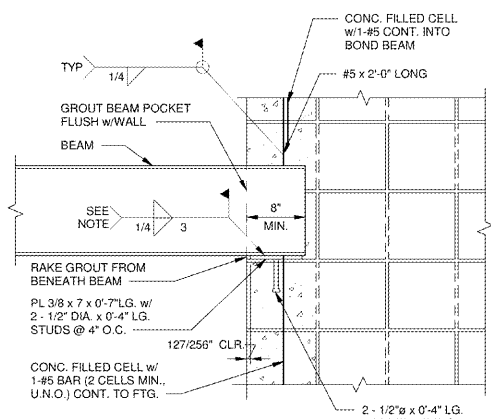


**DETAIL**  
SCALE: 1" = 1'-0"



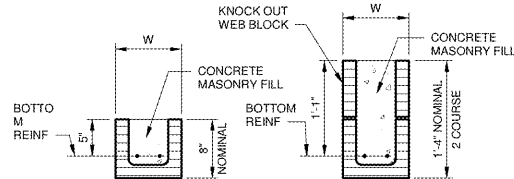
**(BEAM PERPENDICULAR TO WALL)**

**DETAIL**  
SCALE: 1" = 1'-0"



**(BEAM PARALLEL TO WALL)**

**DETAIL**  
SCALE: 1" = 1'-0"

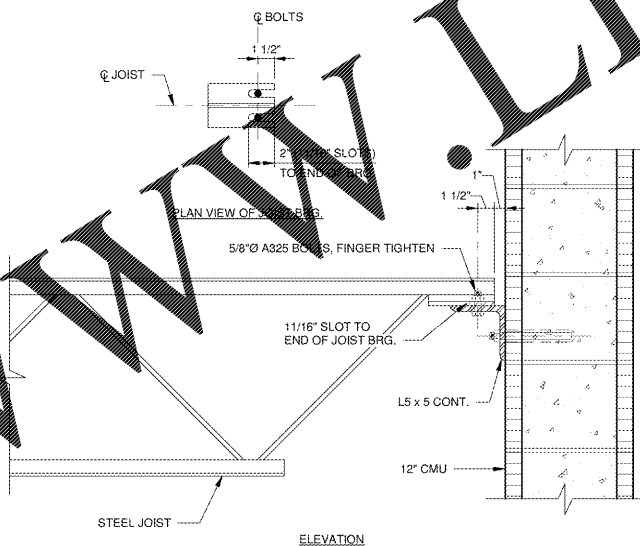


**NOTES:**

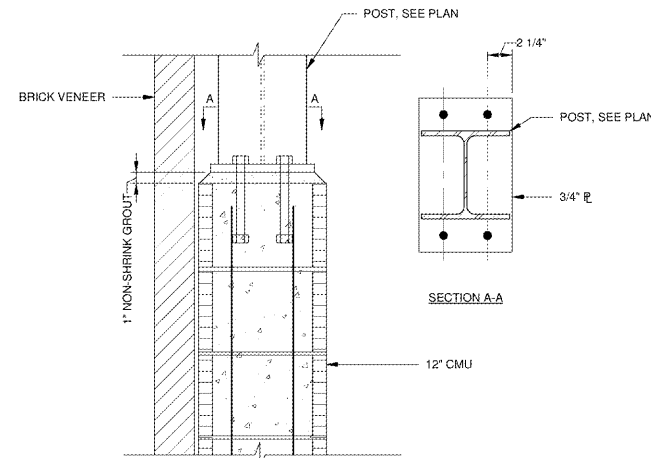
1. BEARING LENGTH AND DISTANCE FROM CLEAR OPENING TO JOINT AT EACH END OF LINTEL SHALL NOT BE LESS THAN 8".
2. FOR DOOR AND WINDOW OPENING SIZES AND SPANS REFER TO ARCHITECTURAL DRAWINGS. FOR LOUVER OPENINGS AND DUCTS THROUGH WALLS REFER TO MECHANICAL DRAWINGS.
3. LINTELS ARE FOR WALL LOADS ONLY AND SHALL NOT BE USED WHERE POINT LOADS TO WALL ARE LOCATED WITHIN CLEAR SPAN/2 OF TOP OF LINTEL.

CLEAR SPAN	MASONRY LINTEL SCHEDULE	
	BOTTOM REINFORCING	LINTEL HEIGHT
UP TO 6'-0"	W = 8" 2 - #4s	3 - #4s 8"
6'-1" - 8'-0"	2 - #5s	3 - #5s 8"
8'-1" - 10'-0"	2 - #4s	3 - #5s 16"
10'-1" - 12'-0"	2 - #5s	3 - #5s 16"

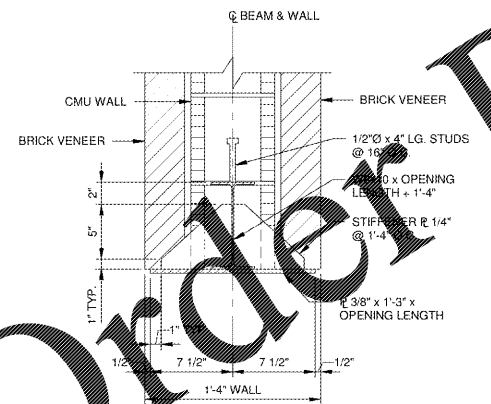
**DETAIL**  
SCALE: 1" = 1'-0"



**DETAIL**  
SCALE: 1 1/2" = 1'-0"

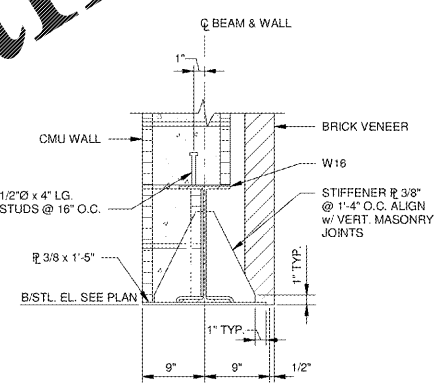


**DETAIL**  
SCALE: 1 1/2" = 1'-0"



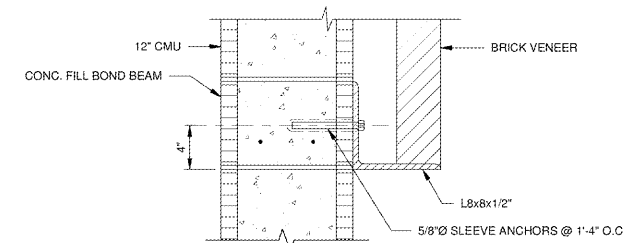
**DETAIL**  
NO SCALE

**DETAIL**  
NO SCALE



**DETAIL**  
NO SCALE

**DETAIL**  
NO SCALE



**DETAIL**  
NO SCALE

**DETAIL**  
NO SCALE

**JL**  
1980  
Architects • Engineers • Planners • Architects  
**JOHNSON, LASCHNER & ASSOCIATES, P.C.**  
1000 W. PINE BLVD., SUITE 100, ATLANTA, GA 30309  
TEL: (404) 224-5756 • TEL: (843) 619-4656  
FAX: (706) 724-3995  
WWW.THEJLAGROUP.COM

CLIENT: AUGUSTA, GA  
535 TELFAIR STREET, AUGUSTA, GA 30901  
PROJECT NAME: **FIRESTATION #20**  
PROJECT LOCATION: 2820 OLD HIGHWAY 1, HEPHIZBAH, GEORGIA 30815

NO.	REV.	DATE	BY	DESCRIPTION
0	12/21/18	12/21/18	MWL	ISSUED FOR BID

PROJECT NO. 3042.1604  
DRAWN BY: CB  
CHECKED BY: MWL  
DATE: 8/10/18  
SHEET TITLE: **MASONRY SECTIONS AND DETAILS**  
SCALE: AS NOTED  
DRAWING NO. **S-401** REV. 0

Order Plans

WWW.LDILLINE.COM

This document is the property of Johnson, Laschner & Associates, P.C. The unauthorized reproduction, copying or otherwise use of this document is strictly prohibited and any infringement thereupon may be subject to legal action.