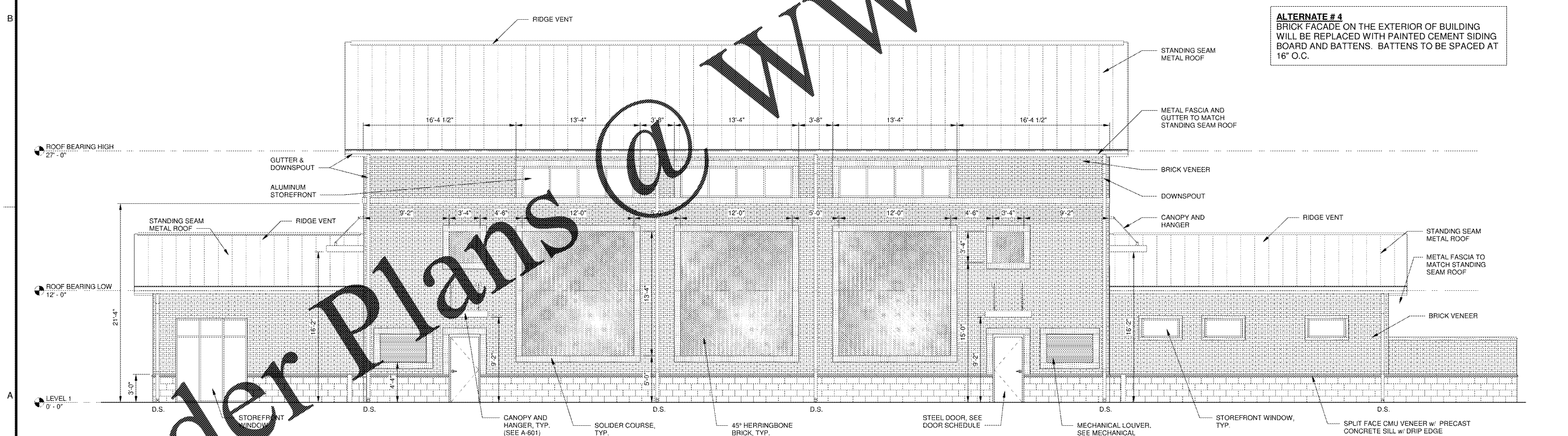


1 SOUTH
A-401 SCALE: 3/16" = 1'-0"



1 NORTH
A-401 SCALE: 3/16" = 1'-0"

ALTERNATE # 4
BRICK FACADE ON THE EXTERIOR OF BUILDING WILL BE REPLACED WITH PAINTED CEMENT SIDING BOARD AND BATTENS. BATTENS TO BE SPACED AT 16" O.C.

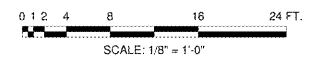
1980
Architects • Engineers • Interiors • Architects
JOHNSON, LASCHOB & ASSOCIATES, P.C.
101 W. GA. • MT. PLEASANT, SC
TEL: (803) 724-5756 • TEL: (843) 619-4656
FAX: (706) 724-3935
WWW.THEJLAGROUP.COM

CLIENT: AUGUSTA, GA
535 TELFAIR STREET, AUGUSTA, GA 30901
PROJECT NAME: **FIRE STATION #20**
PROJECT LOCATION: 2820 OLD HIGHWAY 1, HEPHIZBAH, GA 30815

REV	DATE	BY	DESCRIPTION
0	12/21/18	WLD	ISSUED FOR BID

PROJECT NO.	3042.1604
DRAWN BY:	CBW
CHECKED BY:	WLD
DATE:	8/10/18
SHEET TITLE:	EXTERIOR ELEVATIONS
SCALE:	AS NOTED
DRAWING NO.	A-401
REV:	0

SCALE: AS NOTED
DRAWING NO. **A-401**
REV: **0**



JOHNSON, LASCHOB & ASSOCIATES, P.C. 12/21/2018 4:21:59 PM

This document is the property of Johnson, Laschober & Associates, P.C. The unauthorized reproduction, copying or otherwise use of this document is strictly prohibited and any infringement thereupon may be subject to legal action.