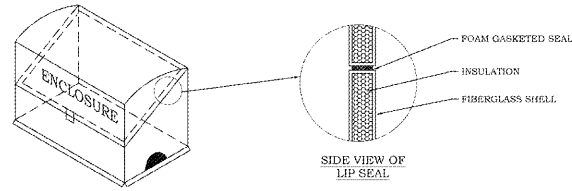
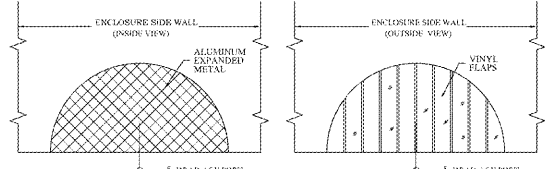


NO REVISION OR MODIFICATION OF THIS DETAIL SHALL BE MADE WITHOUT PRIOR WRITTEN APPROVAL FROM AUGUSTA UTILITIES DEPARTMENT.	REVISED: JANUARY 2018
REDUCED PRESSURE ZONE (RPZ) ASSEMBLY	AUGUSTA UTILITIES DEPARTMENT 452 WALKER STREET, SUITE 200 AUGUSTA, GA 30901
AUD DETAIL 5.5	Water Is Life AUGUSTA UTILITIES



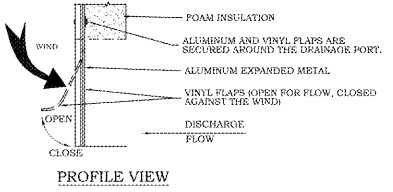
- NOTES:
1. BOX SHALL BE HUBBELL LOK BOX OR ENCLASURE OR EQUAL.
 2. BOX SHALL BE SIZED TO RPZ OR DOUBLE CHECK VALVE ASSEMBLIES 1" TO 12".
 3. BOX SHOULD BE INSULATED TO PROTECT FROM FREEZING.
 4. STANDARD COLORS OF BOX ARE WHITE & BEIGE.
 5. ELECTRICAL OUTLET AND HEATER OPTIONAL.

NO REVISION OR MODIFICATION OF THIS DETAIL SHALL BE MADE WITHOUT PRIOR WRITTEN APPROVAL FROM AUGUSTA UTILITIES DEPARTMENT.	REVISED: JANUARY 2018
RPZ OR DOUBLE CHECK ABOVE GROUND ENCLOSURE ASSEMBLY PROPERTIES	AUGUSTA UTILITIES DEPARTMENT 452 WALKER STREET, SUITE 200 AUGUSTA, GA 30901
AUD DETAIL 5.6	Water Is Life AUGUSTA UTILITIES



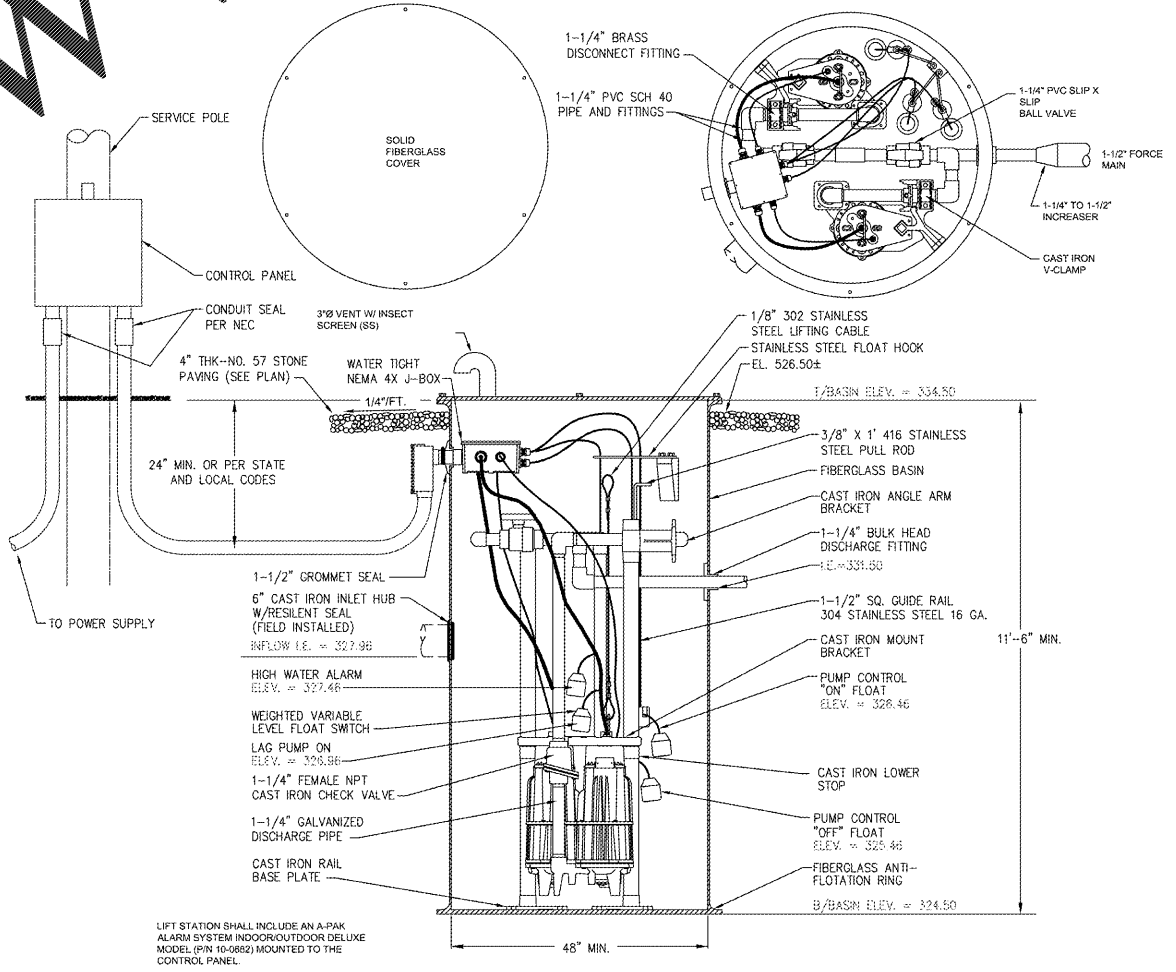
STEP ONE: INSTALLATION OF ALUMINUM FLATTENED EXPANDED METAL FOR THE PREVENTION OF ENTRY OF SMALL ANIMALS, INSECTS AND SPARKS WHILE ALLOWING THE ENTIRE OF THE DRAINAGE DISCHARGE FROM THE ENCLOSURE.

STEP TWO: INSTALLATION OF SOLID VINYL FLAPS OVER THE ALUMINUM EXPANDED METAL. FLAPS PREVENT WIND FROM ENTERING THE ENCLOSURE THROUGH THE DRAINAGE PORTS WITHOUT OBSTRUCTING THE DRAINAGE DISCHARGE.



- NOTES:
1. ALL REDUCED PRESSURE ZONE (RPZ) ASSEMBLIES ARE TO BE INSTALLED ABOVE GROUND OR INSIDE THE FACILITY TO PROTECT FROM FREEZING. EXPOSURE TO FREEZING WILL RESULT IN IMPROPER FUNCTIONING OF THE RPZ AND MAY CAUSE UNREPAIRABLE DAMAGE TO THE ASSEMBLY.
 2. SOUTHERN BUILDING CODES SECTION 304.4 - FREEZING (1994): A WATER, SOIL OR WASTE PIPE SHALL NOT BE INSTALLED OR CONCEALED IN OUTSIDE WALLS OR ANY PLACE WHERE THEY MAY BE SUBJECT TO FREEZING TEMPERATURES, UNLESS ADEQUATE PROVISION IS MADE TO PROTECT THEM FROM FREEZING.
 3. FACILITIES REQUIRING AN RPZ MAY BE ALLOWED TO INSTALL THEM INSIDE THE BUILDING PROVIDED THAT THERE IS NO OTHER CONNECTION BETWEEN THE METER AND BUILDING AND IT IS UNLIKELY ANOTHER RPZ WILL BE INSTALLED IN THE FUTURE, OR A DOUBLE CHECK VALVE IS INSTALLED AT THE METER.
 4. ALL ABOVE GROUND ENCLOSURES FOR RPZ ASSEMBLIES ARE TO BE SIZED TO THE RPZ OR LARGER PER MANUFACTURER'S SPECIFICATIONS.
 5. IF A PERIMETER FOOTER IS USED GRAVEL COVERING THE ENTIRE BOTTOM OF THE ENCLOSURE MUST BE CLEANED 12" DEEP.
 6. ALL ENCLOSURES ARE TO BE DESIGNED WITH DRAIN OPENINGS LARGE ENOUGH TO ACCOMMODATE A FULL DISCHARGE OF THE ASSEMBLY.

NO REVISION OR MODIFICATION OF THIS DETAIL SHALL BE MADE WITHOUT PRIOR WRITTEN APPROVAL FROM AUGUSTA UTILITIES DEPARTMENT.	REVISED: JANUARY 2018
ABOVE GROUND ENCLOSURE DRAIN DETAIL	AUGUSTA UTILITIES DEPARTMENT 452 WALKER STREET, SUITE 200 AUGUSTA, GA 30901
AUD DETAIL 5.7	Water Is Life AUGUSTA UTILITIES



- DUPLIX GRINDER PUMP STATION:
- (1) 48" DEEP MIN. LONG DUPLIX FIBERGLASS BASIN W/ FIBERGLASS COVER
 - (2) 2 HP GRINDER PUMP (ZOELLER MODEL F640 (PIN 840-004) OR EQUAL SYSTEM HEAD CURVE POINTS:
 1. MINIMUM OPERATING POINT: 25 GPM @ 33' (TDH) FT
 2. ADDITIONAL OPERATING POINTS: 33 GPM @ 106' (TDH) FT, 33 GPM @ 181' (TDH) FT
 - (3) ZEP NEMA 4X DUPLIX CONTROL PANEL W/ THERMOPLASTIC COVER (ZOELLER PIN 19-0387) OR EQUAL
 - (4) VARIABLE LEVEL FLOAT SWITCH WITH 25' CORD & ADJUSTABLE WEIGHT (ZOELLER PIN 10-0330) OR EQUAL
- *NOTE: PUMP MODEL & CONTROL PANEL SPECIFIED CORRESPOND TO 230V-240V, PHASE.

LIFT STATION SHALL INCLUDE AN A-PAK ALARM SYSTEM INDOOR/OUTDOOR DELUXE MODEL (PIN 10-0882) MOUNTED TO THE CONTROL PANEL.

DUPLIX WETWELL & LIFT STATION
NO SCALE

Order Plans @ www.WWLine.com

JLA
Since 1981
Architects, Engineers, and Surveyors
JOHNSON, LACROIX & ASSOCIATES, P.C.
AUGUSTA, GA • MT. PLEASANT, SC
TEL (706) 724-3755 • TEL (843) 619-4656
FAX (706) 724-3935
WWW.THEJLAGROUP.COM

CLIENT: **AUGUSTA, GA**
555 TELFAIR STREET, AUGUSTA, GA 30901

PROJECT NAME: **FIRE STATION #20**

PROJECT LOCATION: **2820 OLD HIGHWAY 1, HEPHIZIBAH, GEORGIA 30815**

NO.	DATE	BY	DESCRIPTION
0	12/21/18	WTE	ISSUED FOR BID

PROJECT NO: 3042.1604
DRAWN BY: DRWN
CHECKED BY: CHK
DATE: 8/10/18
SHEET TITLE: **CONSTRUCTION DETAILS**

SCALE: 1" = 20'

DRAWING NO: **C-607** REV: 0