

Species	Rates per Acre	Rates per 1,000 sq. ft.	Planting Dates by Region		
			M-L	P	C
Barley	3 bu.	3.3 lb.	8/15-11/15	8/15-12/15	8/1-12/31
Oats	4 bu.	2.9 lbs.	9/1-11/30	9/1-11/30	9/1-11/30
Trifolium	3 bu.	2.9 lbs.	---	---	9/15-1/31
Ryegrass, Annual	40 lbs.	0.9 lb.	8/1-4/30	8/1-4/15	8/15-3/31
Rye Grain (alone)	3.0 bu.	3.9 lb.	7/15-11/30	8/15-12/31	9/1-2/28
Rye Grain (in mixtures)	0.5 bu.	0.6 lb.	7/15-11/30	8/15-12/31	9/1-2/28
Lespedeza, Annual	40 lbs.	0.9 lb.	2/1-4/30	2/15-4/30	1/15-3/15
Weeping Lovegrass	4 lbs.	0.1 lb.	3/15-6/15	3/15-6/15	2/15-6/15
Sudangrass	80 lbs.	1.4 lb.	4/1-8/31	4/1-8/31	3/1-7/31
Millet, Browntop	40 lbs.	0.9 lb.	4/1-8/30	4/1-7/15	4/1-7/15
Millet, Pearl	50 lbs.	1.1 lbs.	5/1-7/31	4/15-8/31	4/1-8/31
Wheat	3 bu.	4.1 lb.	9/1-12/31	9/1-12/31	9/15-1/31

1. Temporary cover crops are very competitive and will crowd out perennials if seeded too heavily.
2. Reduce seeding rates by 50% when drilled.
3. Unusual site conditions may require heavier seeding rates.
4. Seeding rates may need to be altered to fit temperature variations and local conditions.

Types of Species	Planting Year	Fertilizer (N-P-K)	Rate (lbs./acre)	N Top Dressing Rate (lbs./acre)
Cool season grasses	First	6-12-12	1500	50-100
	Second Maintenance	6-12-12	400	30
Cool season grasses & legumes	First	6-12-12	1500	0-50
	Second Maintenance	6-12-12	400	30
Temporary cover crops seeded alone	First	10/10/10	500	30
Warm season grasses	First	6-12-12	1500	50-100
	Second Maintenance	6-12-12	400	30

M-L represents the Mountain, Blue Ridge, and Ridge and Valleys MLRAs  
P represents the Southern Piedmont Region MLRA  
C represents the Southern Coastal Plain, Sand Hills, Black Lands, and Atlantic Coast Flatwoods MLRAs

Species	Rate per Acre	Rates per 1,000 sq. ft.	Planting Dates by Region			Remarks
			M-L	P	C	
Bermuda, Common (hulled seed) Alone With Perennials	10 lbs. 6 lbs.	0.2 lb. 0.1 lb.	---	3/1-8/30	2/15-8/30	Quick cover, low growing; sod forming, needs full sun.
Bermuda, Common (unhulled seed) With temporary cover With other perennials	10 lbs. 6 lbs.	0.2 lb. 0.1 lb.	---	10/1-2/28	1/1/1-1/31	Plant with winter annuals.
Bermuda Sprigs With temporary cover	40cu ft. Sod plugs 3' x 3'	0.9cu ft. sq. ft.	3/15-7/15	3/15-7/31	1/1-12/31	1 cu. ft. = 650 sprigs; 1 bu. = 1.25 cu. ft. or 800 sprigs

Types of Species	Planting Year	Fertilizer (N-P-K)	Rate (lbs./acre)	N Top Dressing Rate (lbs./acre)
Cool season grasses	First	6-12-12	1500	50-100
	Second Maintenance	6-12-12	400	30
Cool season grasses & legumes	First	6-12-12	1500	0-50
	Second Maintenance	6-12-12	400	30
Ground covers	First	10-10-10	1300	---
	Second Maintenance	10-10-10	1300	---
Pine seedlings	First	20-10-6	one 2 1/2-gal. potlet per seedling placed in the closing hole	---
	Second Maintenance	10-10-10	1100	---
Shrub Lespedeza	First	0-10-10	700	---
	Second Maintenance	0-10-10	700	---
Temporary cover crops seeded alone	First	10-10-10	500	30
	Second Maintenance	10-10-10	500	30
Warm season grasses	First	6-12-12	1500	50-100
	Second Maintenance	6-12-12	400	30
Warm season grasses & legumes	First	6-12-12	1500	50
	Second Maintenance	6-12-12	400	30

\* APPLY AGRICULTURAL LIME AS PRESCRIBED BY SOIL TESTS OR AT A RATE OF 1 TO 2 TONS PER ACRE

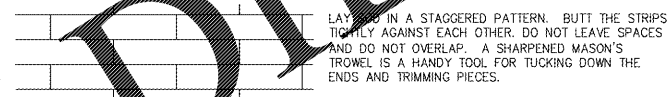
Material	Depth
Dry Straw Or Hay	2" To 4"
Wood Waste (sawdust, Bark, Chips)	2" To 3"
Clayback Asphalt (slow curing)	1200 Gal./acre (1/4 Gal./sq.yd.)
Black Polyethylene Film	Completely Cover Area, Hold in Place With Soil On Outer Edge

Fertilizer Type	Fertilizer Rate (lbs/acre)	Fertilizer Rate (lbs/sq ft)	Season
10-10-10	1000	.025	Fall

Types of Species	Planting Year	Fertilizer (N-P-K)	Rate (lbs./acre)	Nitrogen Top Dressing Rate (lbs./acre)
cool season grasses	first	6-12-12	1500	50-100
	second maintenance	6-12-12	400	30
warm season grasses	first	6-12-12	1500	50-100
	second maintenance	6-12-12	400	30

Grass	Varieties	Resource Area	Growing Season
Bermudagrass	Common Tifway Tifgreen Tiflawn	M-L,P C P.C P.C	warm weather
Bahiagrass	Pensacola	P.C	warm weather
Centipede	---	P.C	warm weather
St. Augustine	Common Bitterblue Raleigh	C	warm weather
Zoysia	---	---	warm weather
Tall Fescue	Kentucky	M,L,P	cool weather

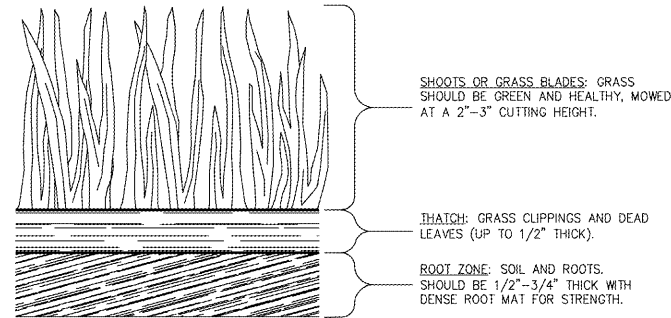
**SOD LAYOUT AND PREPARATION**



**DIRECTIONS FOR INITIAL MAINTENANCE**

- Step 1. ROLL SOD IMMEDIATELY TO ACHIEVE FIRM CONTACT WITH THE SOIL
- Step 2. WATER TO A DEPTH OF 4" AS NEEDED. WATER WELL AS SOON AS THE SOD IS LAID.
- Step 3. MOW WHEN THE SOD IS ESTABLISHED --- IN 2-3 WEEKS. SET THE MOWER HIGH (2"-3").

**APPEARANCE OF GOOD SOD**



**SOD MAINTENANCE AND INSTALLATION**

**Ds4 PERMANENT GRASSING - SOD**

**Ds2 TEMPORARY GRASSING**

1. ALL SEEDED AREAS WILL BE MULCHED WITH HAY OR STRAW AT A RATE OF 2-2 1/2 TONS PER ACRE WITHIN 24 HRS. AFTER SEEDING. USE OF A TACKIFIER IS REQUIRED ON ALL SLOPES EXCEEDING 3:1.
2. GRASSING WILL BE ACCEPTED WHEN A 95% COVER BY PERMANENT GRASSING IS OBTAINED AND WEEDS ARE NOT DOMINANT.
3. GRASSING OF DISTURBED AREAS WILL COMMENCE AT COMPLETION OF EACH PHASE OF CONSTRUCTION OR IN THE SEQUENCE AS INDICATED. IN ANY CASE, GRASSING OF ANY DISTURBED AREA WILL

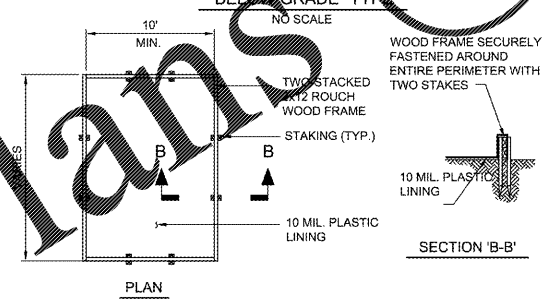
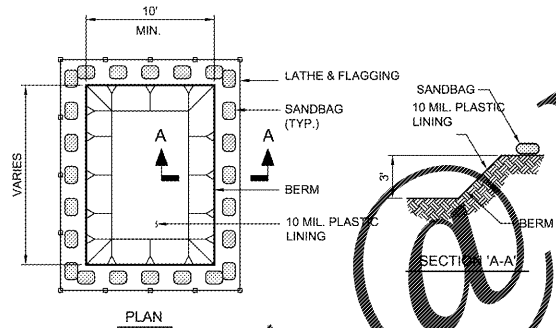
**Ds3 PERMANENT GRASSING**

4. IRRIGATION WILL BE APPLIED AT A RATE THAT WILL NOT CAUSE RUNOFF.
5. TOPDRESSING WILL BE APPLIED ON ALL TEMPORARY & PERMANENT SPECIES PLANTED ALONE OR IN MIXTURES WITH OTHER SPECIES.
6. PERMANENT GRASSING SHALL BE IRRIGATED AND MAINTAINED. BERMUDA GRASS MAY BE MOWED AS DESIRED MAINTAINING AT LEAST 4 TO 6 INCHES OF TOP GROWTH.

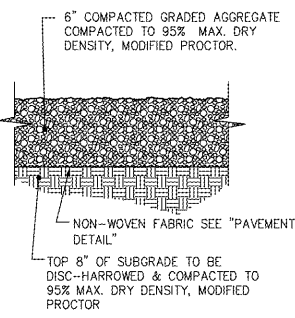
**Ds1 MULCHING**

**GRASSING, FERTILIZATION & MULCH**

NO SCALE



- NOTES:
1. CONTRACTOR MUST PROVIDE A DESIGNATED AREA FOR CONCRETE WASHDOWN OF TOOLS, CONCRETE MIXER CHUTES, AND THE REAR OF THE VEHICLES. THIS AREA MUST HAVE A CONCRETE WASHOUT FACILITY AND SHALL BE CONSTRUCTED PER THE DETAIL SHOWN ABOVE.
  2. THE CONCRETE WASHOUT FACILITY SHALL BE LOCATED AT A MINIMUM OF 50 FEET FROM STORM DRAINS, OPEN DITCHES, OR WATER BODIES.
  3. WASHOUT DISCHARGE FROM THE CLEANING OF CONCRETE TRUCKS, TOOLS AND OTHER EQUIPMENT SHALL BE TRANSPORTED OFF-SITE AND DISPOSED OF PROPERLY.
  4. IT IS PROHIBITED TO WASH OUT THE MIXING DRUM OF CONCRETE TRUCKS ON-SITE.
  5. ACTUAL LAYOUT CAN BE DETERMINED IN FIELD OR AS SHOWN IN PLAN.
  6. CONCRETE WASHOUT SIGN SHALL BE PROVIDED WITHIN 30' OF THE CONCRETE WASHOUT FACILITY.



**Cr CONSTRUCTION ROAD STABILIZATION**

NO SCALE

**DESCRIPTION:**

PREVENT OR REDUCE THE DISCHARGE OF POLLUTANTS TO STORMWATER FROM CONCRETE WASTE BY CONDUCTING OFF-SITE WASHOUT, PERFORMING ON-SITE WASHOUT IN A DESIGNATED AREA, AND TRAINING EMPLOYEES AND SUBCONTRACTORS.

**TARGETED POLLUTANTS: CONCRETE WASTE**

**CONSTRUCTION GUIDELINES:**

1. AVOID MIXING EXCESS AMOUNTS OF FRESH CONCRETE OR CEMENT ON SITE.
2. PERFORM WASHOUT OF CONCRETE TRUCKS OFF SITE OR IN DESIGNATED AREAS ONLY.
3. DO NOT WASH OUT CONCRETE TRUCKS INTO STORM DRAINS, OPEN DITCHES, STREETS, OR STREAMS.
4. AVOID DUMPING EXCESS CONCRETE IN NON-DESIGNATED DUMPING AREAS.

**FOR ON-SITE WASHOUT:**

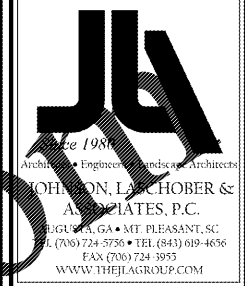
1. LOCATE WASHOUT AREA AT LEAST 50 FT FROM STORM DRAINS, OPEN DITCHES, OR WATER BODIES. CONSTRUCT A TEMPORARY PIT OR BERMED/DIKED AREA WITH A PAVED OR GRAVEL APPROACH TO CAPTURE LIQUID AND SOLID WASTE.
2. WASH OUT WASTES INTO THE TEMPORARY PIT WHERE THE CONCRETE MUST BE BROKEN UP, AND THEN DISPOSED OF PROPERLY.
3. WHEN WASHING CONCRETE TO REMOVE FINE PARTICLES AND EXPOSE THE AGGREGATE, DRAIN THE WATER TO A BERMED, DIKED OR LEVEL AREA.
4. AVOID WASHING SWEEPINGS FROM EXPOSED AGGREGATE CONCRETE TO THE STREET OR STORM DRAIN. COLLECT AND RETURN SWEEPINGS TO AGGREGATE BASE STOCKPILE OR DISPOSE IN THE TRASH.
5. TRAIN EMPLOYEES AND SUBCONTRACTORS IN PROPER CONCRETE WASTE MANAGEMENT.

**MAINTENANCE:**

1. INSPECT SUBCONTRACTORS TO ENSURE THAT CONCRETE WASTES ARE BEING PROPERLY MANAGED. TEMPORARY WASHOUT FACILITIES MUST BE CLEANED, OR NEW FACILITY MUST BE CONSTRUCTED AND READY FOR USE ONCE THE WASHOUT IS 75% FULL.
2. IF USING A TEMPORARY PIT, DISPOSE HARDENED CONCRETE ON A REGULAR BASIS. DEPRESSIONS OR OTHER GROUND DISTURBANCE CAUSED BY THE REMOVAL OF THE TEMPORARY CONCRETE WASHOUT SHALL BE BACKFILLED AND REPAIRED.

**CWM CONCRETE WASTE MANAGEMENT**

NO SCALE



**J.A. BUCHANAN & ASSOCIATES, P.C.**  
Architects • Engineers • Planners • Architects  
1000 W. BROADWAY, SUITE 1000 • AUGUSTA, GA 30901  
TEL: (706) 724-5756 • TEL: (843) 619-4656  
FAX: (706) 724-3955  
WWW.THEJAGROUP.COM

CLIENT: AUGUSTA, GA  
555 TELFAIR STREET, AUGUSTA, GA 30901  
PROJECT NAME: FIRE STATION #20  
PROJECT LOCATION: 2820 OLD HIGHWAY 1, HEPHZIBAH, GEORGIA 30815

NO.	DATE	BY	DESCRIPTION
0	12/21/18	W/TB	ISSUED FOR BID

PROJECT NO. 3042.1604  
DRAWN BY DRWN  
CHECKED BY: CHK  
DATE: 8/10/18

**E.S.P.C. NOTES & DETAILS - 2 OF 5**

SCALE: AS NOTED  
DRAWING NO. REV. 0

**C-505**

**GSWCC** Georgia Soil and Water Conservation Commission  
**WILLIAM T. BUCHANAN**  
Level II Certified Design Professional  
CERTIFICATION NUMBER: 0000065516  
ISSUED: 1/25/2018 EXPIRES: 1/25/2021

ORDER PLANS @ WWW.IDLINE.COM

This document is the property of Johnson, Lamborn & Associates, P.C. The unauthorized reproduction, copying or otherwise use of this document is strictly prohibited and any subsequent infringement may be subject to legal action.