

1

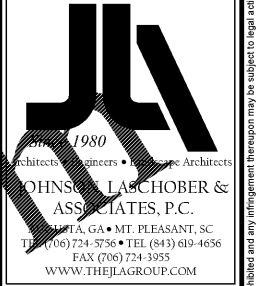
2

3

4

HVAC CONSTRUCTION NOTES:

- ① - SEE 2/M-101 FOR CONTINUATION.
- ② - SEE 1/M-101 FOR CONTINUATION.
- ③ - 6/8 EA DUCT UP TO KEF-1 ON ROOF.
- ④ - 10/12 OA DUCT UP TO KSF-1 ON ROOF.
- ⑤ - PROVIDE GREASE DUCT (CLEANOUTS) WITH A 12"X12" OPENING ON THE VERTICAL SIDE OF THE HORIZONTAL GREASE DUCT. PER IMC 2012 WRAP GREASE DUCT IN TWO LAYERS OF FIRE BARRIER DUCT WRAP, EQUAL TO 3M² FIRE BARRIER DUCT WRAP 615+, PER IMC 2012.
- ⑥ - PROVIDE FIRE DAMPER AT SA DUCT PENETRATION OF 1-HR RATED CEILING. ROUTE SA DUCTWORK BELOW 1-HR RATED CEILING TO SA DIFFUSER USING FLEXIBLE DUCTWORK.
- ⑦ - PROVIDE FIRE DAMPER AT DUCT PENETRATION OF 1-HR RATED CEILING.
- ⑧ - 10" Ø DUCT DOWN TO RA DUCT, WITH MANUAL VOLUME DAMPER.
- ⑨ - 6" Ø DUCT DOWN TO RA DUCT, WITH MANUAL VOLUME DAMPER.
- ⑩ - COVER IL-3 MOUNTED IN EXTERIOR SIDEWALL ABOVE LOBBY 101 ROOF.



CLIENT: AUGUSTA, GA
535 TELFAIR STREET, AUGUSTA, GA 30601

PROJECT NAME: FIRE STATION #3

PROJECT LOCATION: 2649 GORDON HWY., AUGUSTA, GA 30609

ISSUED FOR BID

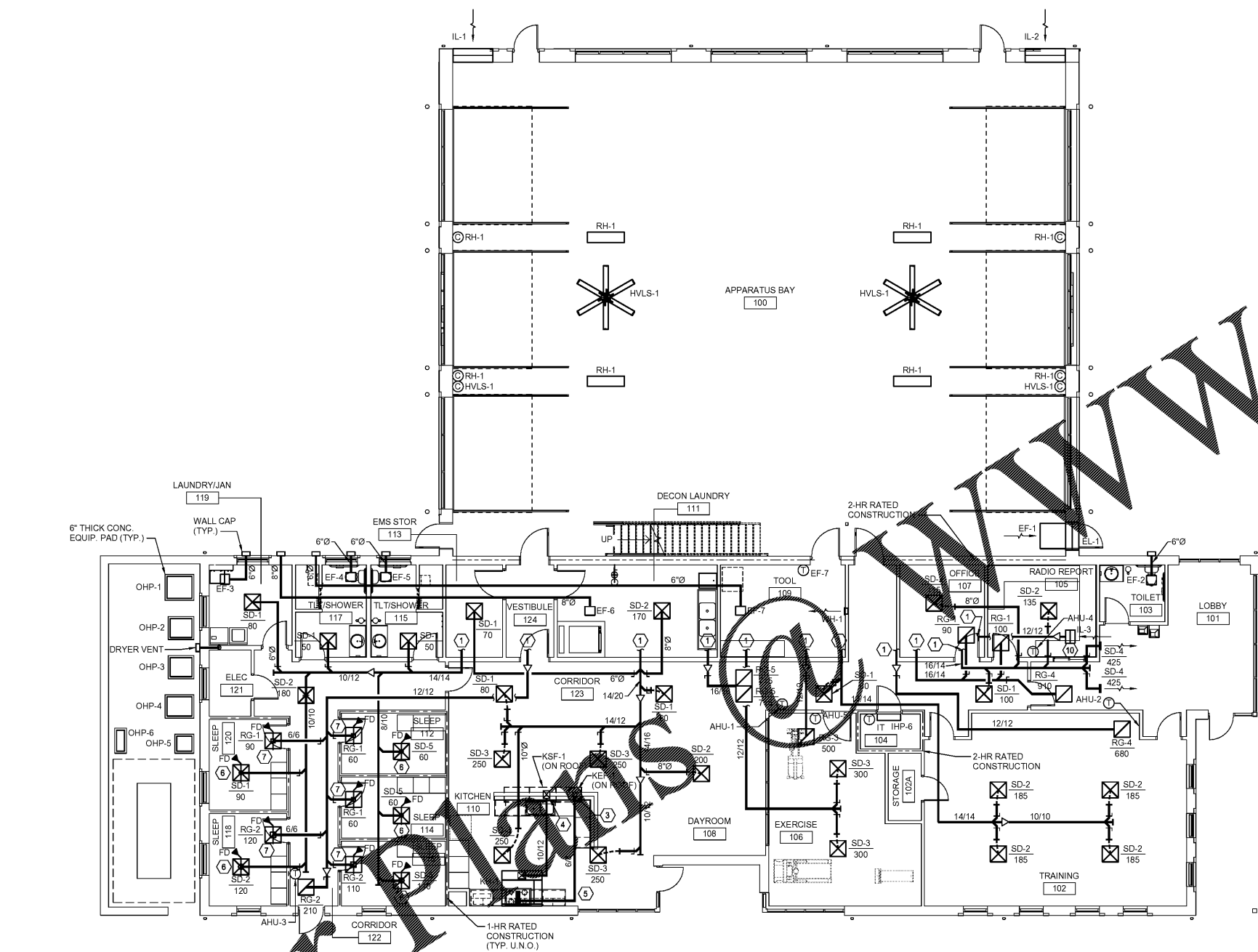
REV	DATE	BY	DESCRIPTION
0	12/21/18	MNB	ISSUED FOR BID

PROJECT NO. 3042.1604
DRAWN BY: MNB
CHECKED BY: CVW
DATE: 10/18/17

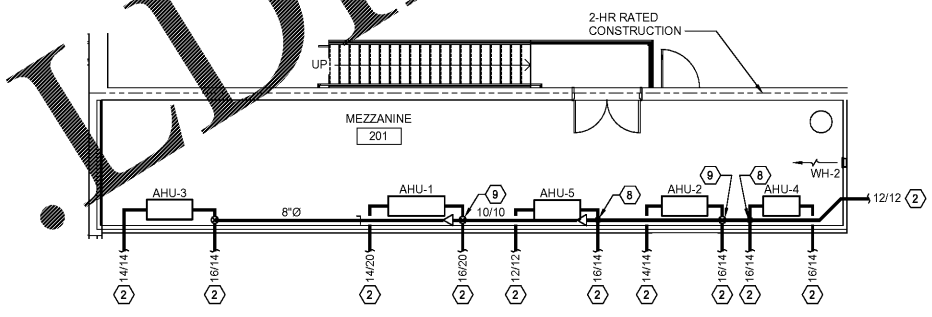
SHEET TITLE: HVAC PLAN

SCALE: AS NOTED

DRAWING NO. M-101 REV. 0

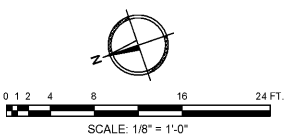


① HVAC PLAN
M-101 SCALE: 1/8" = 1'-0"



② MEZZANINE HVAC PLAN
M-101 SCALE: 1/8" = 1'-0"

FIRE DAMPER NOTE:
FIRE DAMPERS ARE NOT REQUIRED TO BE INSTALLED AT DUCTS THAT PENETRATE 1-HR RATED FIRE PARTITIONS. PER 2012 IMC, SECTION 607.5.3. EXCEPTION 4. DUCTS AT SUCH WALL PENETRATIONS SHALL COMPLY FULLY WITH REQUIREMENTS OF EXCEPTION 4.



Order

10/20/18 10:43:48 AM REV. 11/15/2017 BJB

This document is the property of Johnson, Lascobor & Associates, P.C. The unauthorized reproduction, copying or otherwise use of this document is strictly prohibited and any infringement thereupon may be subject to legal action.