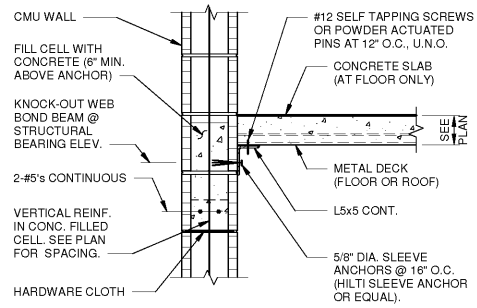
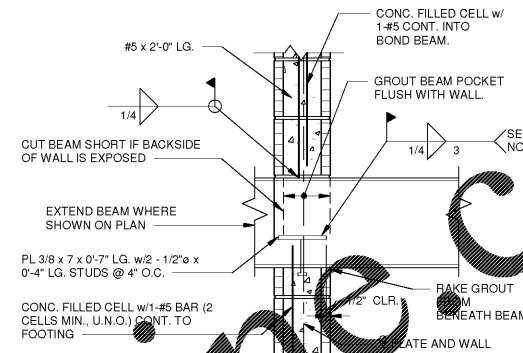


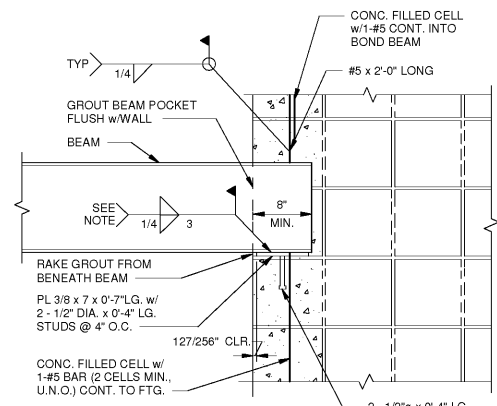
**DETAIL**  
SCALE: 3/16" = 1'-0"



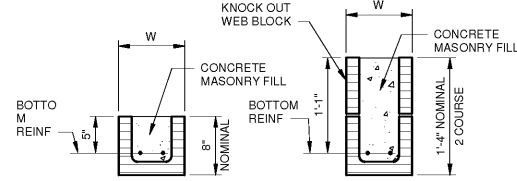
**DETAIL**  
SCALE: 1' = 1'-0"



**DETAIL**  
SCALE: 1' = 1'-0"



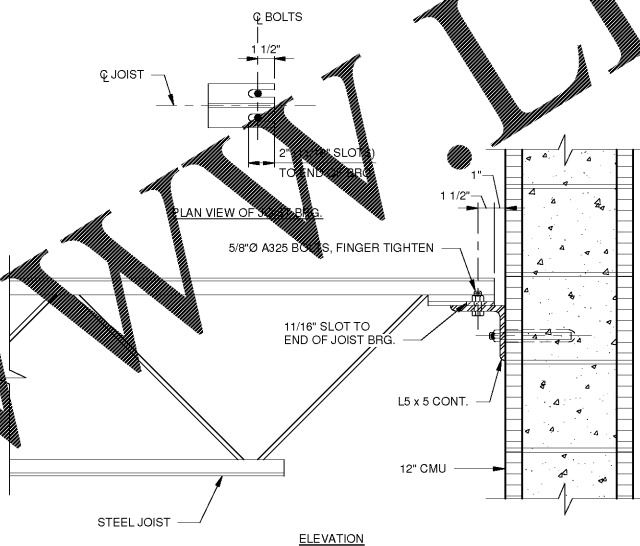
**DETAIL**  
SCALE: 1' = 1'-0"



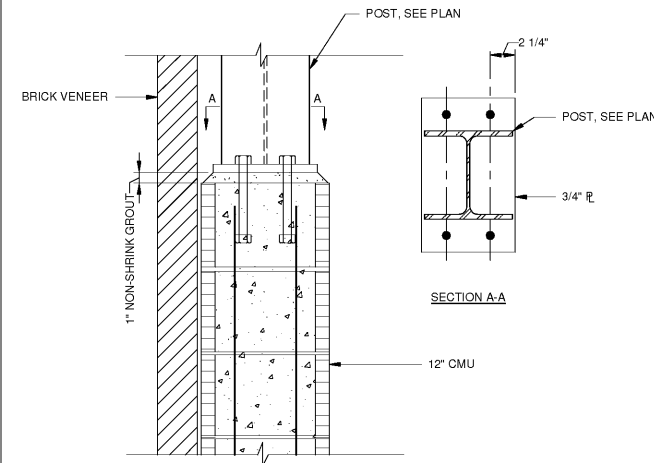
- NOTES:**
1. BEARING LENGTH AND DISTANCE FROM CLEAR OPENING TO JOINT AT EACH END OF LINTEL SHALL NOT BE LESS THAN 8".
  2. FOR DOOR AND WINDOWS OPENING SIZES AND SPANS REFER TO ARCHITECTURAL DRAWINGS. FOR LOUVER OPENINGS AND DUCTS THROUGH WALLS REFER TO MECHANICAL DRAWINGS.
  3. LINTELS ARE FOR WALL LOADS ONLY AND SHALL NOT BE USED WHERE POINT LOADS TO WALL ARE LOCATED WITHIN CLEAR SPAN/2 OF TOP OF LINTEL.

CLEAR SPAN	MASONRY LINTEL SCHEDULE	
	BOTTOM REINFORCING	LINTEL HEIGHT
UP TO 6'-0"	W = 8" 2 - #4s	3 - #4s
6'-1" - 8'-0"	2 - #5s	3 - #5s
8'-1" - 10'-0"	2 - #4s	3 - #5s
10'-1" - 12'-0"	2 - #5s	3 - #5s

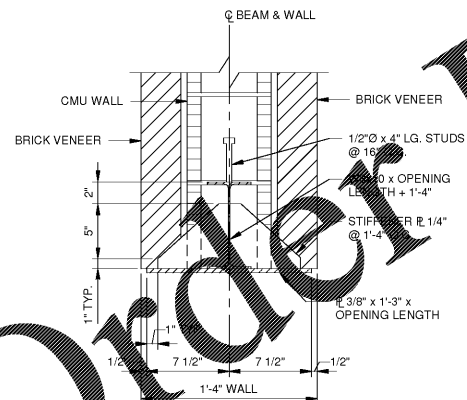
**DETAIL**  
SCALE: 1' = 1'-0"



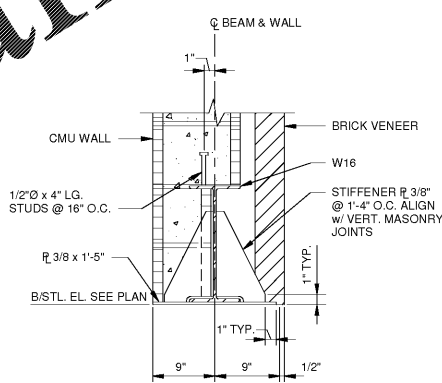
**DETAIL**  
SCALE: 1 1/2" = 1'-0"



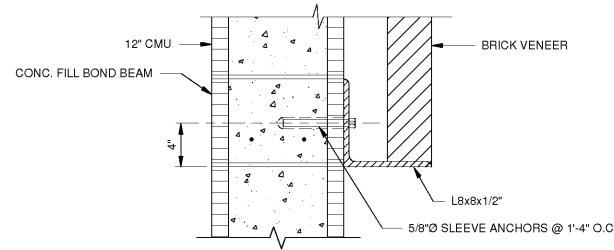
**DETAIL**  
SCALE: 1 1/2" = 1'-0"



**DETAIL**  
NO SCALE



**DETAIL**  
NO SCALE



**DETAIL**  
NO SCALE

**JL**  
1980  
Architects • Engineers • Planners • Architects  
**JOHNSON, LASCHNER & ASSOCIATES, P.C.**  
1000 W. GA. HWY. • MT. PLEASANT, SC  
TEL: (863) 724-5756 • TEL: (843) 619-4656  
FAX: (706) 724-3935  
WWW.THEJLAGROUP.COM

CLIENT: AUGUSTA, GA  
535 TELFAIR STREET, AUGUSTA, GA 30901  
PROJECT NAME: **FIRESTATION #3**  
PROJECT LOCATION: 2649 GORDON HWY., AUGUSTA, GA 30909

DESCRIPTION

REV	DATE	BY	ISSUED FOR BID
0	12/21/18	MWL	ISSUED FOR BID

PROJECT NO. 3042.1604  
DRAWN BY: CB  
CHECKED BY: MWL  
DATE: 10/08/18  
SHEET TITLE: **MASONRY SECTIONS AND DETAILS**  
SCALE: AS NOTED  
DRAWING NO. **S-401** REV. **0**

Order Plans

WWW.LDILLINE.COM

This document is the property of Johnson, Laschner & Associates, P.C. The unauthorized reproduction, copying or otherwise use of this document is strictly prohibited and any infringement thereupon may be subject to legal action.