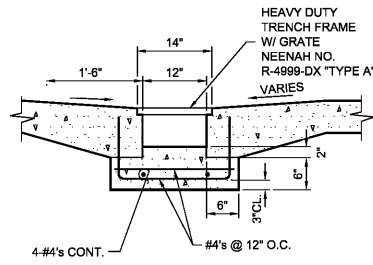


SECTION THRU TRENCH DRAIN AT DRIVEWAY

NOTES:

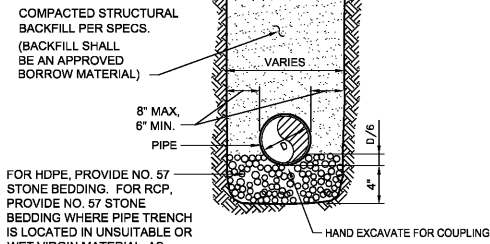
1. ALL CONCRETE IN TRENCH SHALL BE 3,000PSI W/ NO. 4 REBARS @ 12" O.C. B.W.
2. TRENCH FRAMES & GRATES SHALL BE CAT. NO. R-4999-DX "TYPE A" AS MANUFACTURED BY NEENAH FOUNDRY COMPANY OR EQUAL (MUST BE APPROVED BY THE ENGINEER).

TRENCH DRAIN DETAIL
NO SCALE

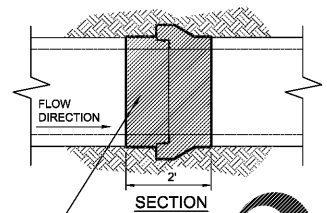


SECTION "A-A"

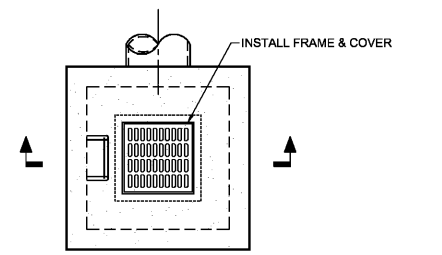
- NOTE:
1. PROVIDE GREEN WARNING TAPE OVER STORM PIPES.
 2. THERMOPLASTIC PIPE SHALL BE INSTALLED PER THIS DETAIL & PER ASTM D-2321 "STANDARD PRACTICE FOR UNDERGROUND INSTALLATION OF THERMOPLASTIC PIPE FOR SEWERS & OTHER GRAVITY FLOW APPLICATIONS."
 3. REINFORCED CONCRETE PIPE (RCP) SHALL BE INSTALLED PER THIS DETAIL & PER ASTM C1479-01 "STANDARD PRACTICE FOR INSTALLATION OF PRECAST CONCRETE SEWER, STORM DRAIN, AND CULVERT PIPING USING STANDARD INSTALLATIONS."



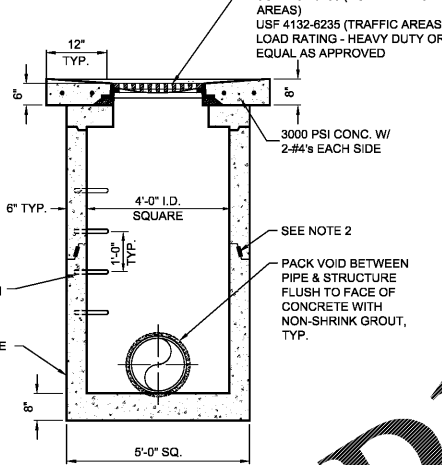
TYPICAL TRENCH SECTION FOR GRAVITY STORM SEWER INSTALLATION
NO SCALE



TYPICAL JOINT FOR RCP GRAVITY STORM SEWER INSTALLATION
NO SCALE



TOP VIEW

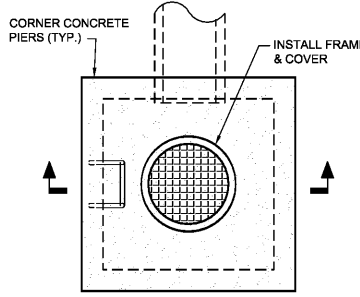


SECTION

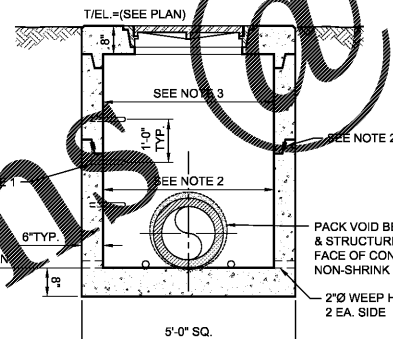
NOTES:

1. STRUCTURES LESS THAN 5 FT. IN HEIGHT (MEASURED FROM THROAT ELEVATION TO STRUCTURE BOTTOM) DO NOT REQUIRE STEPS.
2. SEE SPECIFICATIONS FOR INFORMATION ON THE STEPS.
3. IF HEIGHT OF STRUCTURE REQUIRES THAT IT BE CAST IN PIECES, SEAL JOINTS W/ CUT-OFF RAMNECK FLUSH W/ INSIDE OF WALLS & GROUT SECTIONS OF MANHOLE INSIDE & OUTSIDE. W/ PIPE SMOOTH, TYP.
4. FOR STRUCTURES WITH 36" & LARGER PIPES, THE PIPE DIMENSION SHALL BE 4" MIN., U.N.O. FOR STRUCTURES WITH LARGER THAN 36", THE INSIDE DIMENSION SHALL BE OUTSIDE DIAMETER OF PIPE PLUS 6" CLEARANCE EACH SIDE & ROUNDED UP TO THE NEAREST FOOT, U.N.O.
5. STRUCTURES WITH HDPE PIPE SHALL BE ROUND AND SHALL HAVE A FLEXIBLE BOOT WITH STAINLESS STEEL CLAMP FOR THE PIPE-STRUCTURE CONNECTION.
6. STRUCTURES SHALL HAVE A 12" SLUMP CONCRETE APRON NOT REQUIRED FOR STRUCTURES LOCATED IN UNSCALED (NON-TRAFFIC) AREAS.
7. STRUCTURES WITH RCP PIPE SHALL BE CAST W/ BLOCKOUTS. KNOCK-OUT PANELS ARE NOT ACCEPTABLE.

GRATE INLET DETAIL
NO SCALE



TOP VIEW

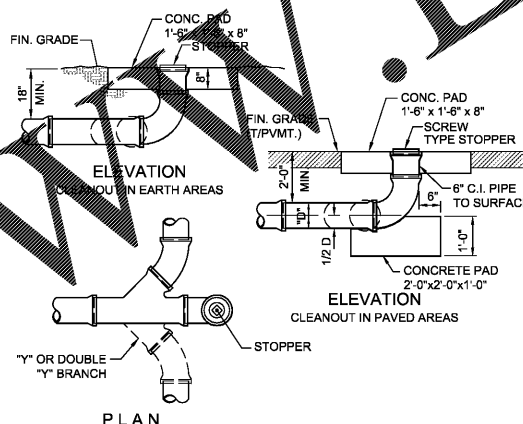


SECTION

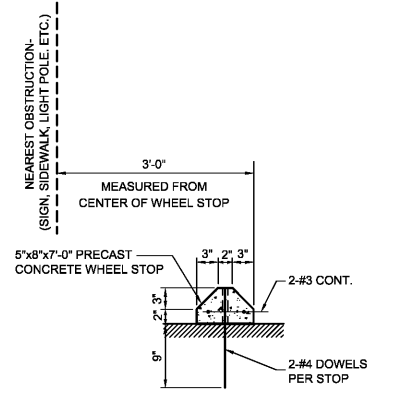
NOTES:

1. STRUCTURES LESS THAN 5 FT. IN HEIGHT (MEASURED FROM THROAT ELEVATION TO STRUCTURE BOTTOM) DO NOT REQUIRE STEPS.
2. SEE SPECIFICATIONS FOR INFORMATION ON THE STEPS.
3. IF HEIGHT OF STRUCTURE REQUIRES THAT IT BE CAST IN PIECES, SEAL JOINTS W/ CUT-OFF RAMNECK FLUSH W/ INSIDE OF WALLS & GROUT SECTIONS OF MANHOLE INSIDE & OUTSIDE & W/ PIPE SMOOTH, TYP.
4. FOR STRUCTURES WITH 36" & SMALLER PIPES, THE INSIDE DIMENSION SHALL BE 4'-0" MIN., U.N.O. FOR STRUCTURES WITH LARGER THAN 36", THE INSIDE DIMENSION SHALL BE OUTSIDE DIAMETER OF PIPE PLUS 6" CLEARANCE EACH SIDE & ROUNDED UP TO THE NEAREST FOOT, U.N.O.
5. STRUCTURES WITH HDPE PIPE SHALL BE ROUND AND SHALL HAVE A FLEXIBLE BOOT WITH STAINLESS STEEL CLAMP FOR THE PIPE-STRUCTURE JOINT CONNECTION.
6. STRUCTURES SHALL HAVE A 12" SLUMP CONCRETE APRON NOT REQUIRED FOR STRUCTURES LOCATED IN UNSCALED (NON-TRAFFIC) AREAS.
7. STRUCTURES WITH RCP PIPE SHALL BE CAST W/ BLOCKOUTS. KNOCK-OUT PANELS ARE NOT ACCEPTABLE.

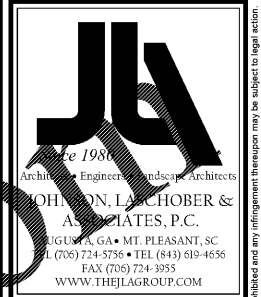
PRECAST JUNCTION BOX DETAIL
NO SCALE



CLEANOUT DETAILS
NO SCALE



CONC. WHEEL STOP DETAIL
NO SCALE



CLIENT: AUGUSTA, GA
535 TELFAIR STREET, AUGUSTA, GA 30901
PROJECT NAME: FIRE STATION #3
PROJECT LOCATION: 2648 GORDON HWY., AUGUSTA, GA 30909

REV	DATE	BY	DESCRIPTION
0	12/21/18	WTB	ISSUED FOR BID

PROJECT NO. 3042.1604
DRAWN BY: DRWN
CHECKED BY: CHK
DATE: 10/18/17
SHEET TITLE: CONSTRUCTION DETAILS 3 OF 7
SCALE: 1" = 20'
DRAWING NO. C-603
REV. 0