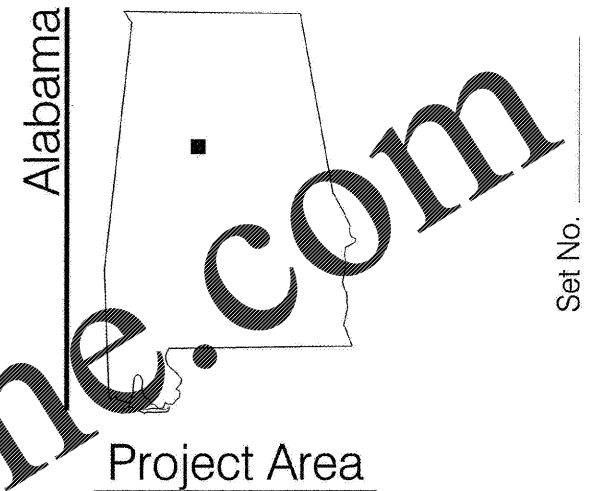
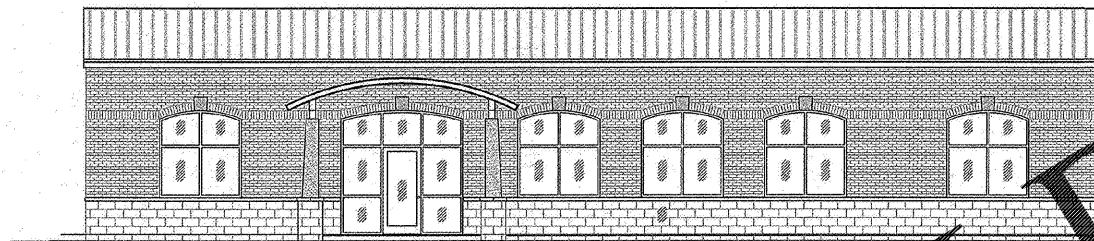


Vicinity Map
Jefferson County, Alabama
December 2018

Construction Plans

Brighton Community Center Project

Project No. CD16-03E-M02-BCC
3810 7th Avenue
Brighton, Alabama 35020

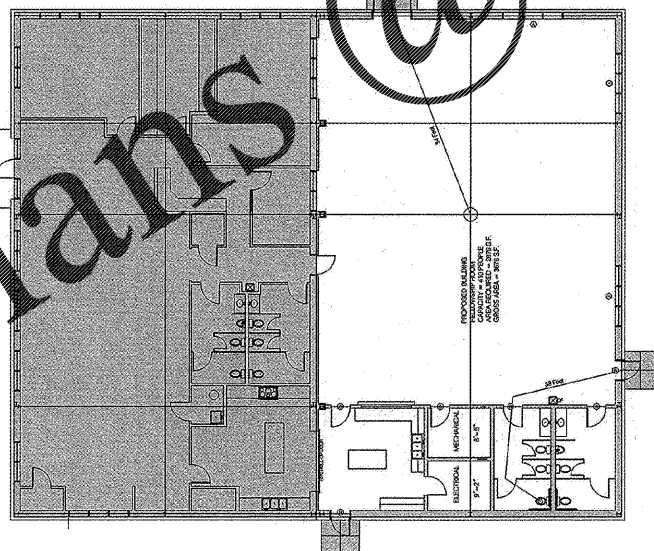


Set No. _____

Index to Sheets

COVER SHEET	
PLANS LEGEND SHEET	C1-C2
STANDARD DETAIL SHEETS	C3-C5
PROJECT NOTES	C6
FIRM MAP	C7
BOUNDARY SURVEY AND TOPOGRAPHIC SURVEY	C8
SITE DEMOLITION PLAN	C9
SITE STAKING PLAN	C10
SITE GRADING PLAN	C11
OMIT	C12
EROSION & SEDIMENT CONTROL PLANS LEGEND	C13
EROSION CONTROL PLAN	C14
EXISTING ELEVATIONS	A1-A2
EXISTING FLOOR PLAN	A3
PROPOSED ELEVATIONS	A4-A5
PROPOSED FLOOR PLAN	A6
REFLECTIVE CEILING PLAN	A7
SECTION VIEWS	A8
FOUNDATION PLAN	S1
ROOF PLAN	S2
STRUCTURAL DETAILS	S
GENERAL HVAC NOTES, LEGENDS, & SCHEDULES	M100
HVAC PLAN	M101
HVAC DETAILS	M102
ELECTRICAL GENERAL NOTES, LEGENDS, & SCHEDULES	E100
ELECTRICAL POWER WIRING PLAN	E101
ELECTRICAL LIGHTING WIRING PLAN	E102
ELECTRICAL AUXILIARY WIRING PLAN	E103
ELECTRICAL PANEL SCHEDULES AND DETAILS	E201
GENERAL PLUMBING NOTES, LEGENDS, & SCHEDULES	P100
UNDERGROUND PLUMBING PLAN	P101
PLUMBING PLAN	P102
FIRE PROTECTION GENERAL NOTES, LEGEND, & SCHEDULES	FP100
FIRE PROTECTION PLAN	FP101

639 Black Bears Way, Tuscaloosa, Alabama 35401
Phone 205-752-5564 / Fax 205-752-5569
www.sentell.net / sentell@sentell.net



PROJECT DESCRIPTION
New building for use as a community storm shelter.

BUILDING INFORMATION
Floor Area: 3676 s.f.
Height: 1 Story

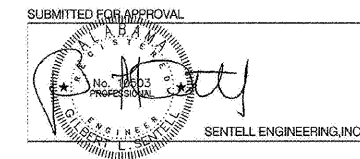
APPLICABLE CODES
International Building Code, 2015 edition
International Plumbing Code, 2015 edition
International Mechanical Code, 2015 edition
National Electrical Code, 2014 edition

Revised ADA Accessibility Guidelines
FEMA 361

LINE SAFETY INFORMATION
OCCUPANCY CLASSIFICATION A-3
(Section 303.4)

CONSTRUCTION TYPE Type I A, Sprinklered

OCCUPANCY LOAD - 2015 IBC Assembly	5sf/ person-Net Area 3676sf/ 5sf/ person = 575 people
Assembly with out fixed seats Concentrated (chairs only - not fixed)	7sf/ person-Net Area 3676sf/ 7sf/ person = 410 people
Unconcentrated (table & chairs)	15sf/ person- Net Area 3676sf/ 15sf/ person = 198 people



APPROVED
Fredrick S. Hamilton
DIRECTOR OF COMMUNITY SERVICES & WORKFORCE DEVELOPMENT

APPROVED
Tony Petelos
JEFFERSON COUNTY MANAGER

APPROVED
Sheila Tyson
COMMISSIONER, DISTRICT 2

APPROVED
Howard P. White
MAYOR
City of Brighton

ARCHITECT:
HOWARD P. WHITE, AIA
4131 HILLSBORO DR.
TUSCALOOSA, ALABAMA 35404

ELECTRICAL & HVAC ENGINEER:
ROBBINS ENGINEERING COMPANY, LLC
5945 KNIGHT AVE SUITE B
TUSCALOOSA, ALABAMA 35405

Order Plans