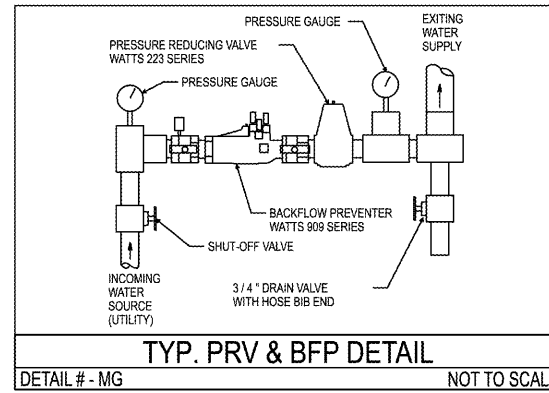
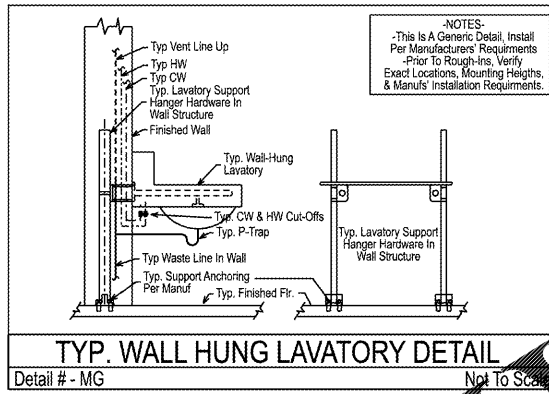


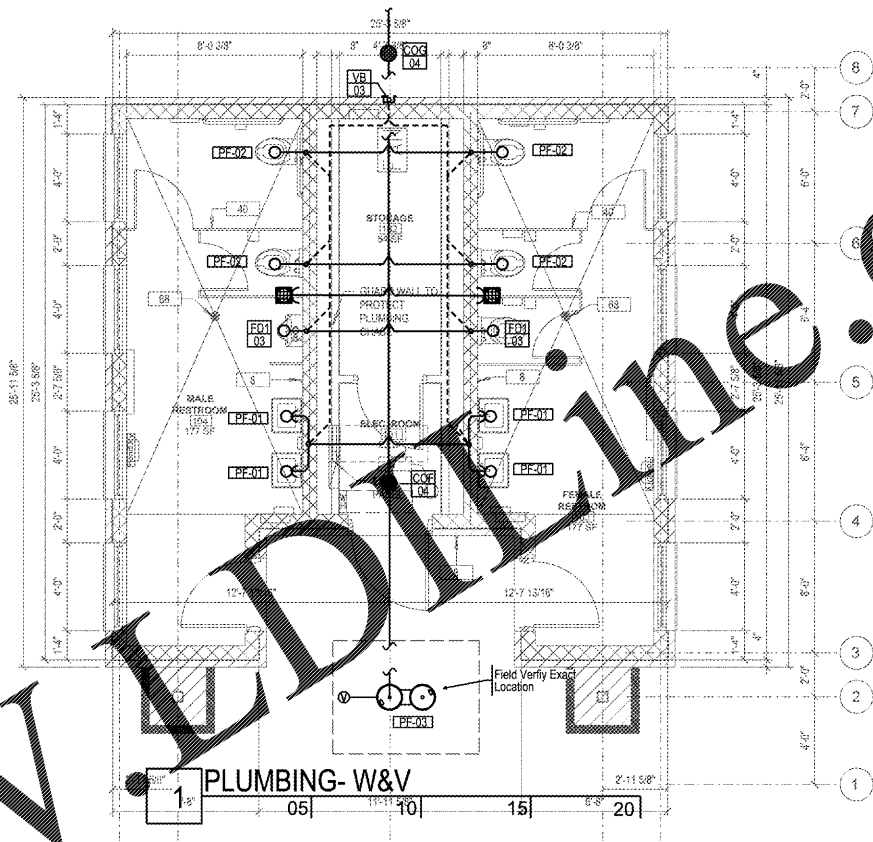
Base Plan - Restrooms 606-GSF



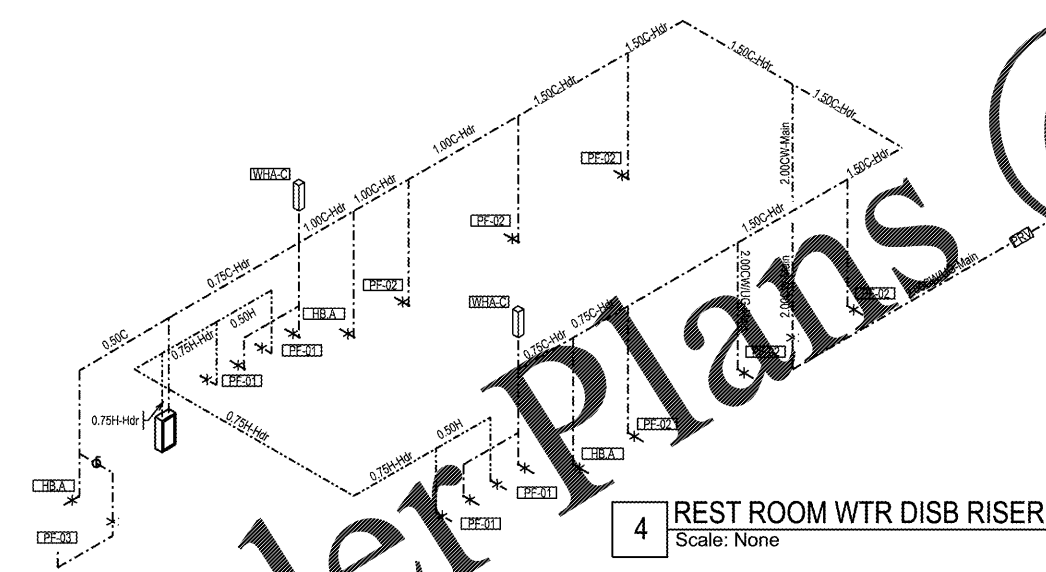
TYP. PRV & BFP DETAIL



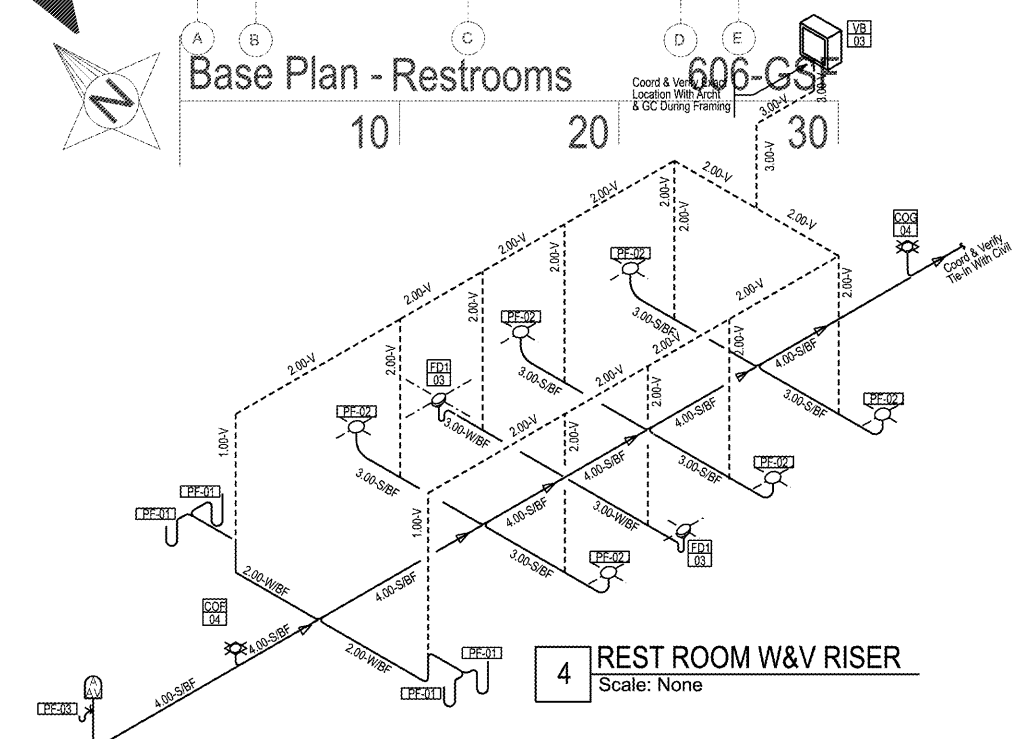
TYP. WALL HUNG LAVATORY DETAIL



Base Plan - Restrooms 606-GSF



4 REST ROOM WTR DISB RISER  
Scale: None



4 REST ROOM W&V RISER  
Scale: None

PLUMBING SYMBOLS	
SYMBOLS	DESCRIPTION
---	Sanitary-Waste Drain Line
- - - -	Sanitary-Waste Vent Line
---	Domestic Cold Water Line
---	Domestic Hot Water Line
---	Special System 01 Line Work As Noted
---	Special System 02 Line Work As Noted
XXXX	ID-Tags Refer To Schedules For Data

Order Plans @

WWW.LDLINE.COM

RELEASED FOR CONSTRUCTION

FOR THE EXCLUSIVE USE OF JOEL AVILES ARCHITECTS

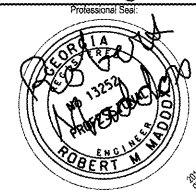
ARCHITECT  
**JOEL AVILES ARCHITECTS**  
 ARCHITECTURE & ENGINEERING RENDERINGS  
 40 N. Peachtree Street, Suite 3000, Atlanta, Georgia 30308  
 Tel: 404.525.1885 email: joel@joelaviles.com  
 Fax: 770.251.0285 www.joelaviles.com  
 © 2019 JOEL AVILES ARCHITECTS, LLC.

Prepare For:  
**City of Forest Park, GA**

745 Forest Parkway  
 Forest Park, GA 30297

Consultant:  
**THE MADDOX GROUP**  
 DESIGN & ENGINEERING  
 9309 Seminole Road  
 Jonesboro, GA 30236  
 770-471-9076  
 maddoxgroup@comcast.net

This Drawing And Its Reproductions Are The Property Of The Engineer And May Not Be Reproduced, Published Or Used In Any Way Without The Permission Of The Engineer.  
 COPYRIGHT © 2019

Professional Seal  
  
**ROBERT M. MADDOX**  
 ENGINEER  
 STATE OF GEORGIA  
 License No. 13252

Notes:

YR/AM/CD	Action-Issue-Revs Description	Rev #
	Project & Address	

**MAIN STREET RESTROOMS**

Main Street & College Street  
 Intersection  
 Forest Park, Georgia

Drawing Title:  
**PLUMBING PLANS**

Drawing Status:  
**Released For Construction**

Scale: As Shown Project #: TMGH 19.102  
 Drawn By: TMG Comm Date: 2019.01.15  
 Reviewed By: TMG Stamped: 2019.02.01

Drawing:  
**P-02**