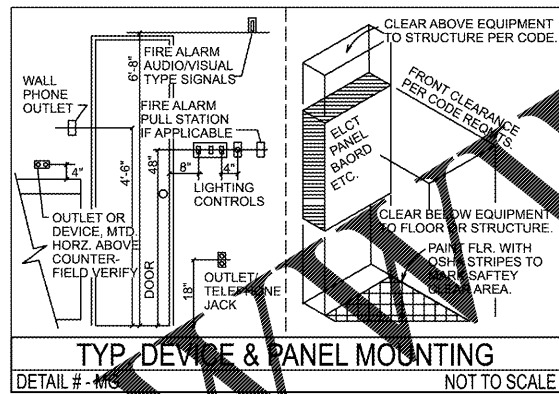
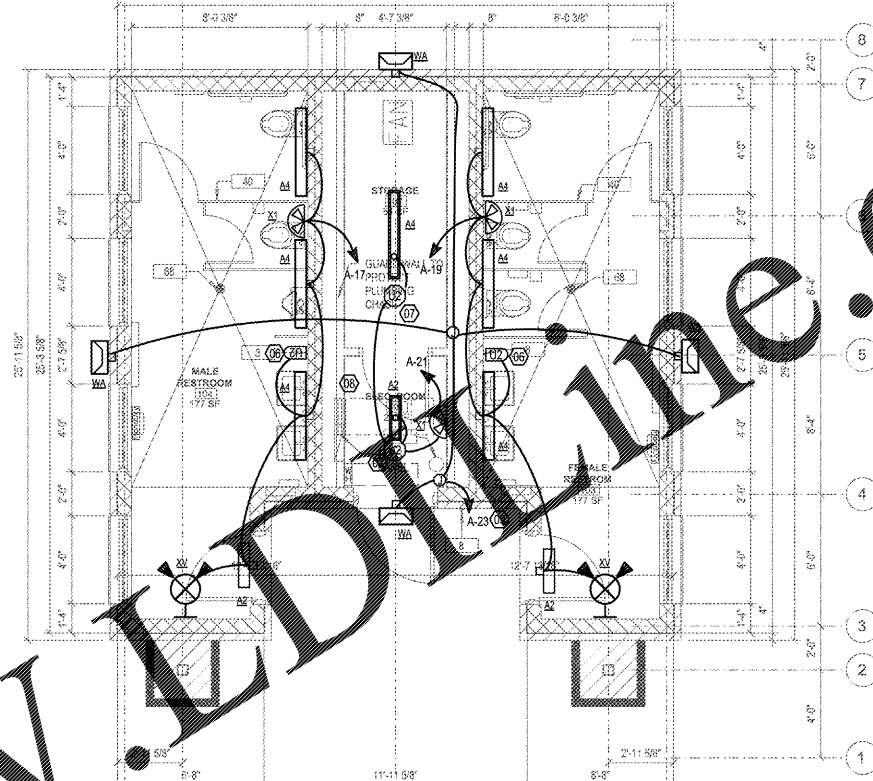


1 ELECTRICAL - PLAN
Base Plan - Restrooms 606-GSF

LEGEND NOTES		
19.03.01	Forest Park Main St Restrooms	CO
#	Rv	
01	-	Wtr. Htr. Instant Type, 8.0-KW, 240V, 1Phs, (Verify), Coord With Plumb, Connect Per Manuf.
02	-	Heater in Wall, 3.6-KW, 240V, 1Phs, (Verify), Coord With HVAC, Connect Per Manuf.
03	-	Hand Dryer, Provide, Install & Connect, 1.4-KW, 240V, 1Phs, (Verify), Coord Mtg With Archt. Connect Per Manuf. Excel Xlerator XL-Color +Wall-Guard + ADA Kit
04	-	Exhaust Fan, Coordinate With HVAC & Provide Control Wiring Per HVAC
05	-	Panel Mtg. Coord. With GC Regarding Mounting Of Panel In "Guard-Wall". Provide Steel Channel Supports For Panel & Wiring.
06	-	Dual-Tech (PIR & US) Wall Mtd. Occupancy Sensor, Vandal-Resistant Decora Style, Aub-On & Auto-Of, 20/40 Ft Range, Self Contained, 120V-800W / 277V-2700W Rated; Hubbell Light-Hawk-2, Leviton OSSMT-MD-X Or Equal. Mount High On Wall
07	-	Dual-Tech (US+PIR) Ctg Mtd. Line-Voltage Occupancy Sensor, 500 SF Coverage, 120V-277V-20A Rated; Hubbell OMNI-DT-XXX-RP-1277 Series
08	-	Astro-Time Switch> Digital Astronomic 2-Channel, 24-7-365 Schedule, Capacitor Back-up, Day-Light Saving & Leap-Year. (2) 20A Load Contacts. Set Schedule Per Owner / Tenant. NSI-Tork DZM-200-BP-O
09	-	Extend Ltg Ckt Thru Astro-Time-Switch
End Of Legend Notes		



TYP. DEVICE & PANEL MOUNTING
DETAIL # - M01 NOT TO SCALE



2 ELECTRICAL - PLAN
Base Plan - Restrooms 606-GSF

LIGHTING GENERAL NOTES	
NOTES & COMMENTS	
FIXTURE TYPES ARE INDICATED BY UPPER CASE CHARACTERS. SWITCHING GROUPS SHOWN BY LOWER CASE LTRS. WHERE APPLICABLE. CIRCUIT GROUPING SHOWN BY NUMBERS, WHERE APPLICABLE. REFER TO REFLECTED CEILING PLANS FOR EXACT FIXTURE LOCATIONS. WP INDICATES WEATHER PROOF SWITCH COVER.	

LIGHTING FIXTURE SYMBOLS		
SYMBOLS	MTG/UNO	DESCRIPTIONS
[Symbol]	SEE SCHD.	LIGHTING FIXTURES, GENERALLY CEILING MOUNTED SHAPE GENERALLY INDICATES SHAPE OF FIXTURE
[Symbol]	SEE SCHD.	FLUORESCENT STRIP TYPE FIXTURE
[Symbol]	SEE SCHD.	WALL OR BRACKET MOUNTED TYPE FIXTURE
[Symbol]	SEE SCHD.	LIGHTING TRACK & FIXTURES
[Symbol]	SEE SCHD.	EXIT SIGNAGE FIXTURE
[Symbol]	SEE SCHD.	EXIT SIGNAGE WITH DIRECTIONAL ARROWS
[Symbol]	SEE SCHD.	EXIT SIGNAGE WITH EMERGENCY FLOOD LIGHTS
[Symbol]	SEE SCHD.	BATTERY TYPE EGRESS FIXTURES
[Symbol]	SEE SCHD.	LIGHTING FIXTURE TYPE ID / TAG- SEE LTG FIXTURE SCHEDULE

LIGHTING CONTROLS - MANUAL, LINE-VOLTAGE, HARD-WIRED			
SYMBOLS	MTG/UNO	GENERIC DESCRIPTIONS	MANUF. & SERIES LEGRAND/P&S-UNO
MANUAL DEVICES - LINE VOLTAGE TYPE			
[Symbol]	48" AFF	1-Toggle Switch, 1= SPST; 2= 2PST; 3= 3-Way; 4= 4-Way	20A, Gnd 120V & 277V PT-262-XX
[Symbol]	48" AFF	(Key Operated Switch, 1= SPST; 2= 2PST; 3= 3-Way; 4= 4-Way	20A, Gnd 120V & 277V PT-20AC-XX
[Symbol]	48" AFF	(Illuminated When On Switch (UNO), 1= SPST; 2= 2PST; 3= 3-Way; 4= 4-Way	20A, Gnd 120V & 277V PT-262-XX
[Symbol]	48" AFF	(Momentary Contact Switch, 1-Pole 3-Position (a) Subscript Indicates Switching Group, Etc.	20A, Gnd 120V & 277V TMB11-DTMO-XX
[Symbol]	48" AFF	(Dimmer Line Volt, (1/3) Way, Full-Off, Incand., CFL & LED; NEMA-SSL7, Forward Pns Dim.	120V, G 150W-CFL, 600W-I Lutron Maestro C-L Dimmers
[Symbol]	48" AFF	(Dimmer, 0-10V Analog Control; 1%-100%; On-Off Switch, Level Slider, Pwr-Fail Memory	120V, G 0-10V Analog Control Wires Lutron Diva Series
[Symbol]	48" AFF	(Weather-IP) Toggle Switch, 1-Pole & WP Cover	20A, 120V, 277V G PT-262-XX & CA1GL
[Symbol]	48" AFF	Switch Motor Rated, NEMA 3R Enclosure	3 Pole, 30A, 600V 7803 Switch & 7833 Ends
COMMENTS & NOTES			
1- Devices To Be UL20, Listed & Labeled Where Applicable.			
2- Devices To Be NECA (VOC-1 & WD-4) Compliant Where Applicable.			
3- Devices To Be NFTA (Buy American) Where Available.			
4- Devices To Be Legrand / P&S, Plug Tail, Spec. Grade Devices, UNO.			
5- Devices From To Decor Style Unless Not Available In Decor Style.			
6- Provide Smooth Finish Matching P&S Trade-Master Grade Cover Plates.			
7- Color As Selected By Owner / Tenant Or Architect.			
8- Products Of Other Manufacturers, Equivalent In Appearance, Features, Performance, Rating & Size, Are Acceptable.			
9- Field Verify Exact Final Location Prior To Rough-Ins Per Archt., Owner / User.			
10- Control / Grouping Indicated By Lower Case Letters (a-b-c-d)			
11- Multiple Adjacent Devices Shall Be Mounted In Multi-Gang Box With Multi-Gang Cover			

WIRING & EQUIPMENT	
SYMBOLS	DESCRIPTIONS
[Symbol]	J-Box Ctg / Wall Mtd. @ 24" AFF UNO Flexible Conduit, LT Damp-Wet Areas Solid Curved- Concealed Wiring Solid Straight- Exposed Wiring Dashed- In-Slab Or U.G. Wiring
[Symbol]	Arrowhead- Home Run As Shown Surf. Mid Multi-Channel Raceway Grounding Symbol / Gnd Rod Plywood Bktd, Size As Noted Motor, F- Fract. HP, #- HP Manual Motor Rated Switch, 30A, 3P, 600V, NEMA-3R Encs. Magnetic Motor Combo Starter / Switch, Ratings As Noted Or Scheduled Electric Heat Unit Disc. Switch, Ratings As Noted Panel / Distb. Panel & Clearances Distrib. Equip. & Clearances Transformer & Clearances
NOTES & COMMENTS	
1- Single Branch Circuits (2) To The Switch May Be Connected To Multiple Homomans More Than (2) 3-CKT. Homomans. Note Multiple OCP Required At Panel.	
2- Every Ckt., Regardless Of Conduit Type, Shall Have Grounding (Non-Stranded) Neutral & A Shared Insulated Grounding Conductor.	
3- All G.C.Ks. Are Required, Each IG Ckt. Shall Have Grounding (Non-Stranded) Neutral & A Shared Insulated Grounding Conductor.	
4- Grouping Of Controls / Switching May Be Indicated By Lower Case Letters (i.e.- a.b.c.-)	

RECEPTACLE DEVICES			
15A	20A	Mtg/UNO	DESCRIPTIONS
[Symbol]	[Symbol]	18" AFF	Single Rcpt. HD Tamper Resistant
[Symbol]	[Symbol]	18" AFF	Duplex Rcpt.
[Symbol]	[Symbol]	18" AFF	Quad Rcpt. (2-Duplex)
[Symbol]	[Symbol]	18" AFF	Duplex WR-ST-TR GFCI Rcpt
[Symbol]	[Symbol]	18" AFF	Duplex WR-ST-TR-GFCI Rcpt. + WP In-Use Cover
[Symbol]	[Symbol]	18" AFF	Duplex Surge Protected (See Wiring Notes)
[Symbol]	[Symbol]	18" AFF	Two Duplex Surge Prot. (See Wiring Notes)
[Symbol]	[Symbol]	18" AFF	Dplx Rcpt-Top Switched
[Symbol]	[Symbol]	18" AFF	TR Duplex Rcpt & 2-USB Type-A Ports, Class-2.0
[Symbol]	[Symbol]	18" AFF	Tamper Resistant Duplex Rcpt.
[Symbol]	[Symbol]	18" AFF	Tamper Resistant Duplex Rcpt. ST-GFCI

COMMENTS & NOTES	
01-	Devices To Be UL20, UL499 Listed & Labeled Where Applicable.
02-	Devices To Be FSUL, UL984, FSUL, UL984 Compliant Where Applicable.
03-	Devices To Be NFTA (Buy American) Where Available.
04-	Devices To Be Legrand / P&S, Plug Tail, Specification Devices, UNO.
05-	Devices To Be Decor Style Unless Not Available In Decor Style.
06-	Provide Smooth Finish Matching P&S Trade-Master Grade Cover Plates.
07-	Products Of Other Manufacturers, Equivalent In Appearance, Features, Performance, Rating & Size, Are Acceptable.
08-	Color As Selected By Owner / Tenant Or Architect.
09-	Field Verify Final Exact Location Prior To Rough-Ins Per Archt., Owner / User.
10-	Multiple Adjacent Devices Shall Be Mounted In Multi-Gang Box With Multi-Gang Cover
11-	Surge Protective Recept. > UL147, Mode, 340 Series, LED & Audio Alarm.

MISC. DEVICES & ITEMS		
SYMBOL	DESCRIPTIONS	COMMENTS - UNO
[Symbol]	(a) Special Type As Req'd (Verify Final Mtg Htg)	As Noted Or Required
[Symbol]	1-Pole, Type As Noted, Set To Structure	Hubbell AL Serv Poles Series Or Equal
[Symbol]	Poke-Through Floor Device As Noted	Hubbell FRPT Series Or Equal
[Symbol]	Multi-Service Floor Box (P-V-D), Type As Req'd, Coord. Exact Placement	Hubbell 3-4 Gang Series Or Equal
[Symbol]	1-Gang Floor Boxes, Type As Req'd.	Hubbell System-One Series Or Equal
[Symbol]	Plug-Mold Raceway, 2-Channel Type Length As Shown Or Req'd.	Wiremold 4000 Series Or Equal
[Symbol]	Surface Raceway, 2-Channel Type Length As Shown Or Req'd.	Wiremold DS4000 Series Or Equal
[Symbol]	Door Bell Button, Lighted, WP, 48" AFF	Nutone-BK142LWH
[Symbol]	Door Bell Chime, Multi-Tone	Chime Kit
COMMENTS & NOTES		
1- Devices To Be UL Listed & Labeled Where Applicable.		
2- Devices To Be NFTA (Buy American) Where Available.		
3- Color As Selected By Owner / Tenant Or Architect.		
4- Field Verify Final Exact Location Prior To Rough-Ins Per Archt., Owner / User.		
5- Products Of Other Manufacturers, Equivalent In Appearance, Features, Performance, Rating & Size, Are Acceptable.		

RELEASED FOR CONSTRUCTION

FOR THE EXCLUSIVE USE OF JOEL AVILES ARCHITECTS

ARCHITECT

JOEL AVILES ARCHITECTS
ARCHITECTURE, PLANNING & RENDERINGS
1000 Peachtree Street, Suite 2020, Atlanta, Georgia 30326
Tel: 404.757.7855 Fax: 770.251.6289 www.joelaviles.com

Prepared For:
City of Forest Park, GA

745 Forest Parkway
Forest Park, GA 30297

Consultant:
THE MADDOX GROUP
DESIGN & ENGINEERING
9309 Seminole Road
Jonesboro, GA 30236
770-471-9076
madoxgroup@comcast.net

This Drawing And Its Reproductions Are The Property Of The Engineer And May Not Be Reproduced, Published Or Used In Any Way Without The Permission Of The Engineer.
COPYRIGHT © 2019

Professional Seal:

ROBERT M. MADDOX
Professional Engineer
State of Georgia
License No. 13237
Mechanical Engineering

Notes:

YR-MM-DD	Action-Issue-Rev#	Description	Rev.#
		Action-Issue-Rev# Description	
		Action-Issue-Rev# Description	
		Action-Issue-Rev# Description	

MAIN STREET RESTROOMS

Main Street & College Street
Intersection
Forest Park, Georgia

Drawing Title:
ELECTRICAL & LIGHTING PLAN

Drawing Status:
Released For Construction

Scale: As Shown Project #: TMG# 19.102
Drawn By: TMG Comm. Date: 2019.01.15
Reviewed By: TMG Stamp: 2019.02.01

Drawing:
E-03