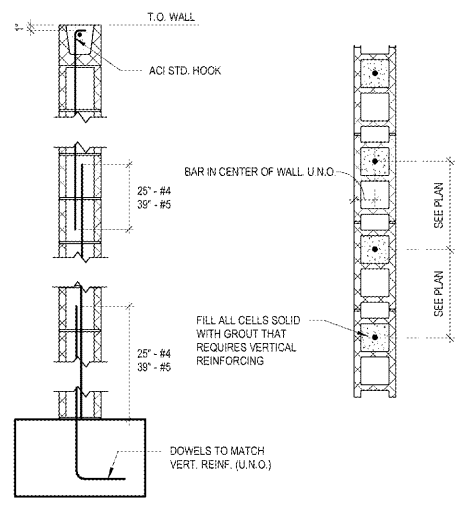
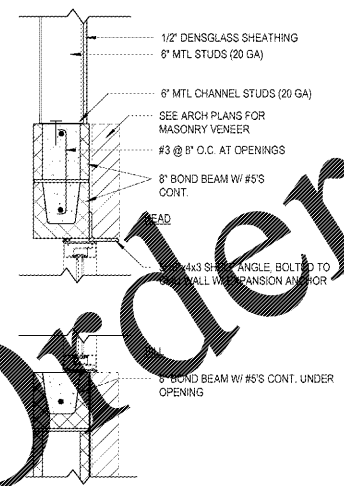


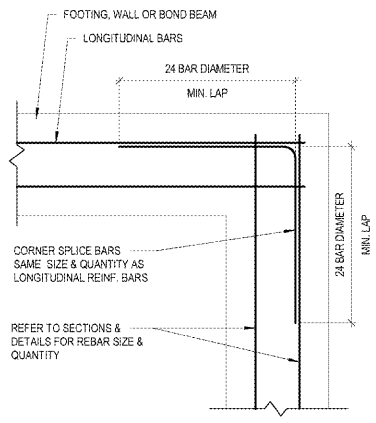
1 TYPICAL CMU WALL REINF.
1/2" = 1'-0"



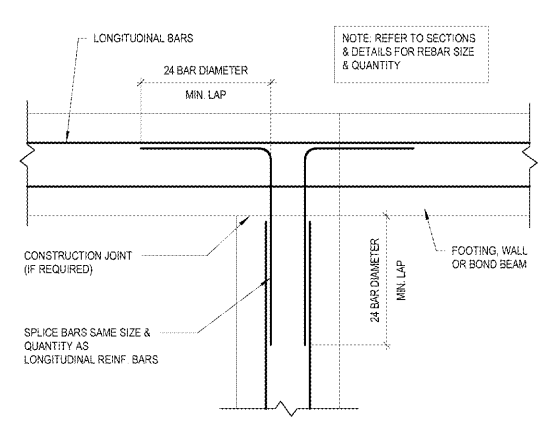
6 DETAIL VERTICAL BARS
3/4" = 1'-0"



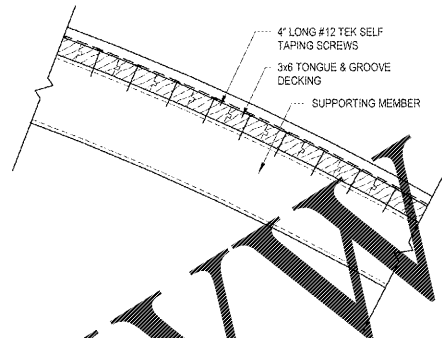
7 BOND BEAM OVER OPENINGS
1" = 1'-0"



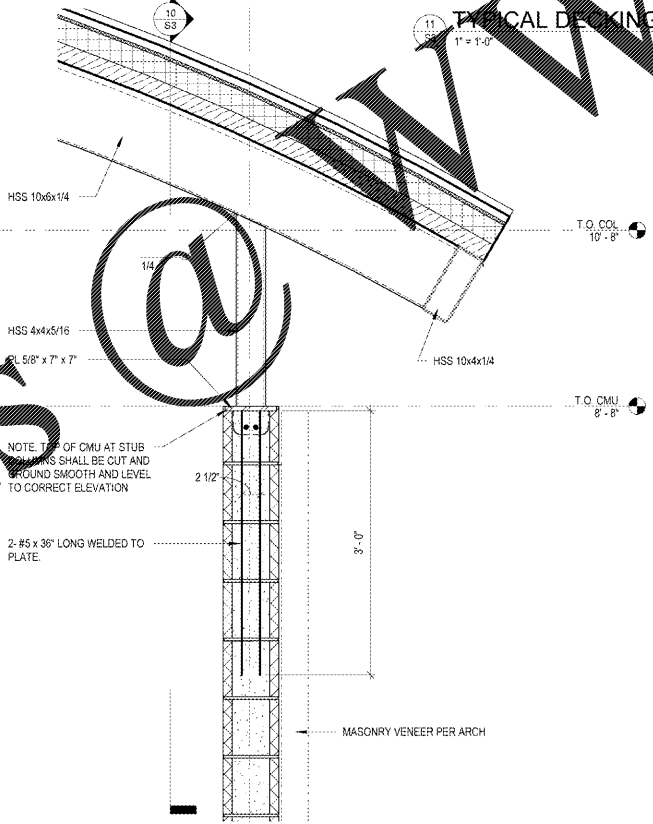
2 TYP. CONTINUITY CORNER
1" = 1'-0"



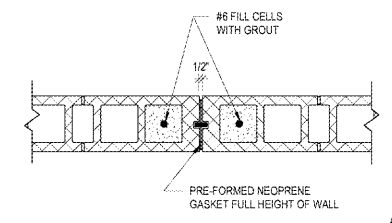
3 TYP. CONTINUITY INT.
1" = 1'-0"



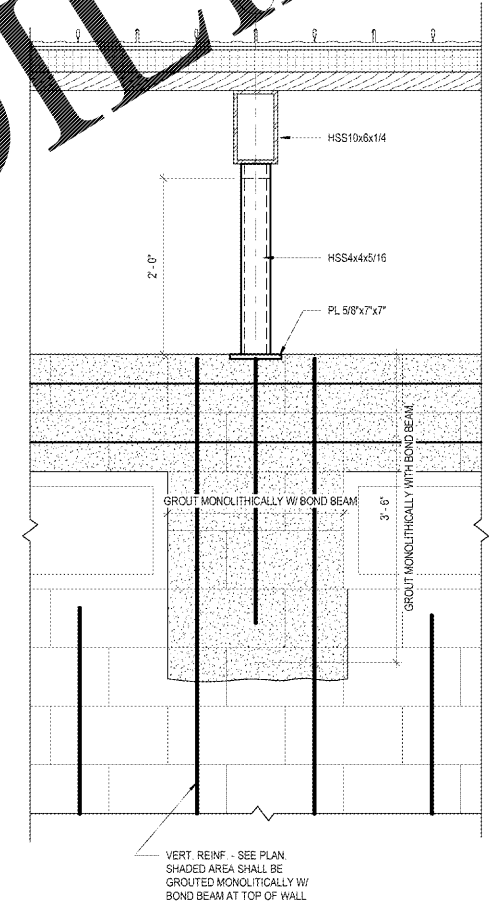
10 TYPICAL DECKING DETAIL
1" = 1'-0"



9 TYP. STUB COLUMN SECTION
1" = 1'-0"



NOTES:
 1. SEE ARCH. FOR EXACT LOCATION OF CONTROL JOINT.
 2. DO NOT LOCATE CONTROL JOINTS WITHIN 2'-0" OF OPENINGS.
 3. MAXIMUM SPACING OF CONTROL JOINTS TO BE 24 FEET OR 1.5 TIMES WALL HEIGHT WHICHEVER IS LESS.
 4. HORIZONTAL JOINT REINFORCEMENT TO BE DISCONTINUED AT JOINT.
 5. HORIZONTAL REINFORCING STEEL DESIGNATED CONTINUOUS SHALL NOT BE INTERRUPTED AT JOINT.



10 TYP. STUB COLUMN ELEVATION
1" = 1'-0"

Prepared by:
JOEL AVILES ARCHITECTS
 ARCHITECTS | PLANNING | RENDERINGS
 110 North Main Street, Forest Park, Georgia 30236
 Tel: 404.876.7895 | Email: joel@joelaviles.com
 www.joelaviles.com
 JOEL AVILES ARCHITECTS, LLC - ALL RIGHTS RESERVED
 Professional Seal:
 STATE OF GEORGIA
 JOEL AVILES
 REGISTERED ARCHITECT
 02.08.2019

Prepared for:
 CITY OF FOREST PARK

Consultants:

NO.	DATE	DESCRIPTIONS	BY
ISSUES / REVISIONS			

Project:
MAIN STREET RESTROOMS

Project Address:
 NORTHEAST QUADRANT OF COLLEGE AND MAIN ST
 FOREST PARK, GA 30297

Drawing Title:
DETAILS

Drawing Status:
RELEASED FOR CONSTRUCTION

Scale: As indicated Drawn by: JA Reviewed by: JA
 Date/Time Printed: 2/7/2019 2:43:38 PM
 Date: 02.08.2019 Project number: 18031

Drawing:
S3

Order Plans @ www.LDILine.com