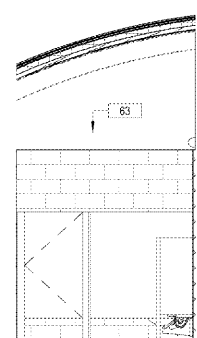
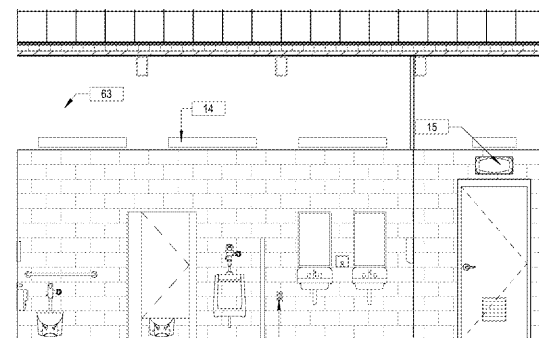


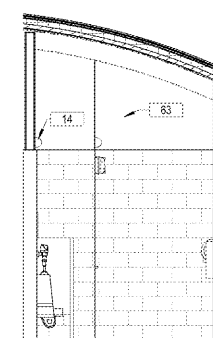
1 MALE INT ELEV 1 - A  
A210 1/4" = 1'-0"



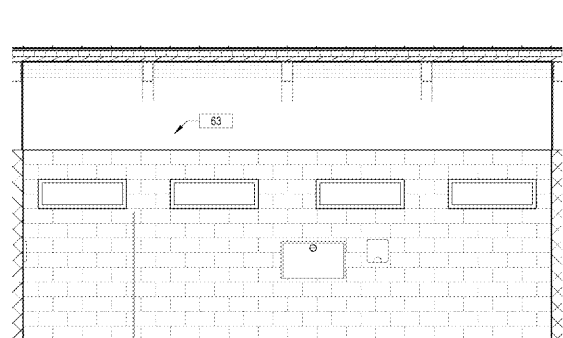
2 MALE INT ELEV 1 - B  
A210 1/4" = 1'-0"



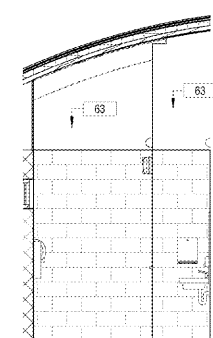
3 MALE INT ELEV 1 - C  
A210 1/4" = 1'-0"



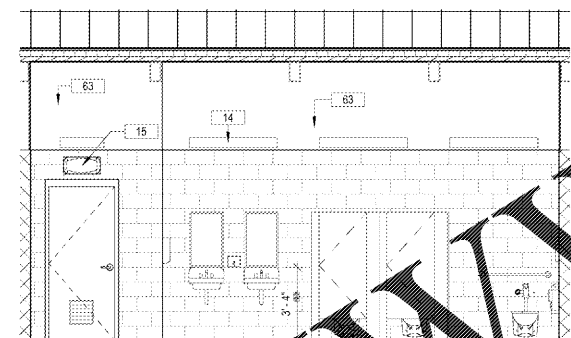
4 MALE INT ELEV 1 - D  
A210 1/4" = 1'-0"



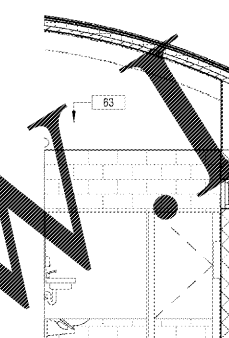
5 FEMALE REST INT ELEV 1 - A  
A210 1/4" = 1'-0"



6 FEMALE INT REST ELEV 1 - B  
A210 1/4" = 1'-0"



7 FEMALE INT REST ELEV 1 - C  
A210 1/4" = 1'-0"



8 FEMALE INT REST ELEV 1 - D  
A210 1/4" = 1'-0"

KEYNOTE LEGEND	
KEYNOTE VALUE	KEYNOTE TEXT
9	HOSE BIBB IN RECESSED LOCK BOX. SEE PLUMBING.
14	WALL MOUNTED LIGHT FIXTURE. SEE ELEC.
15	EXIT SIGN AND EMERGENCY LIGHT COMBO.
63	GOLD BOND HI-IMPACT XP GYPSUM BOARD, 5/8" THICK, PAINTED AND FINISH, INCLUDE ALL TERMINATION TRIMS. ALL INTERIORS.

Prepared by:

**JOEL AVILES ARCHITECTS**  
ARCHITECTS | PLANNING | RENDERINGS  
110 North High Street | Columbus | Georgia 30206  
Tel: 404.253.7885 | email: info@joelaviles.com  
www.joelaviles.com  
© 2019 JOEL AVILES ARCHITECTS. ALL RIGHTS RESERVED.

Professional Seal:

Prepared for:  
CITY OF FOREST PARK

Consultants:

NO.	DATE	DESCRIPTIONS	BY
ISSUES / REVISIONS			

Project:  
**MAIN STREET RESTROOMS**

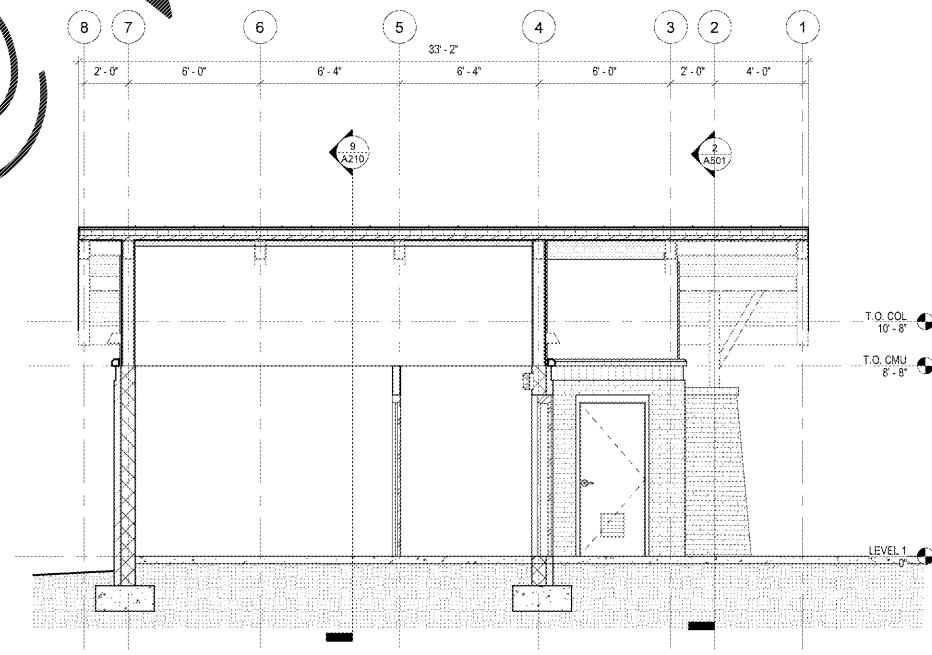
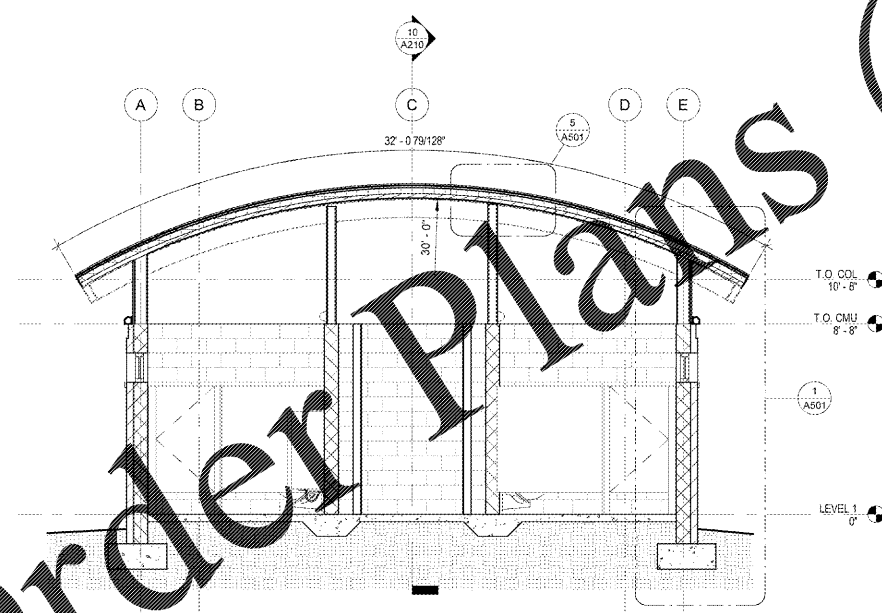
Project Address:  
NORTHEAST QUADRANT OF COLLEGE AND MAIN ST  
FOREST PARK, GA 30297

Drawing Title:  
**INTERIOR ELEVATIONS & BUILDING SECTIONS**

Drawing Status:  
**RELEASED FOR CONSTRUCTION**

Scale: 1/4" = 1'-0" Drawn by: JA Reviewed by: JA  
Date/Time Printed: 2/7/2019 2:43:03 PM  
Date: 02.08.2019 Project number: 18031

Drawing:  
**A210**



Order Plans @

WWW.LDILine.com