

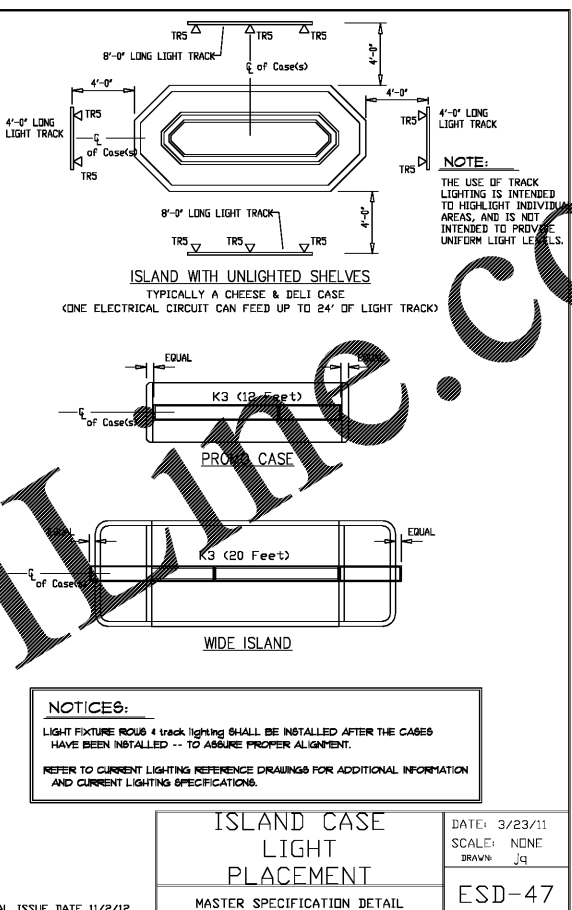
NO.	REVISIONS

A With-in-the-Walls Remodel for:
KROGER STORE #GA-483 SNELLVILLE
1670 STATE HWY 124, SUITE 'F', SNELLVILLE, GEORGIA 30078

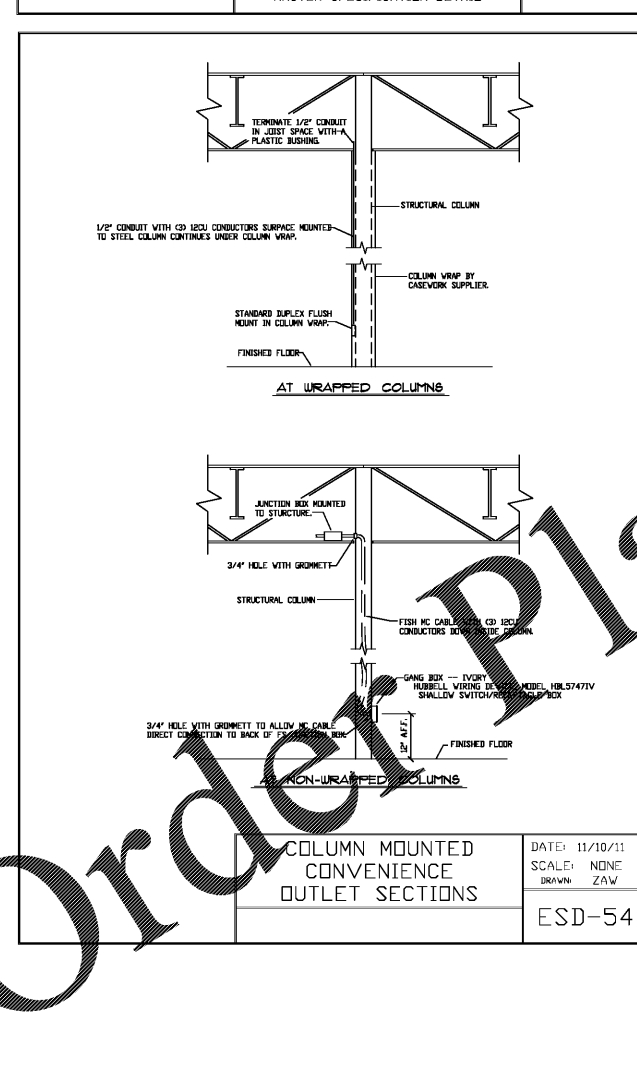
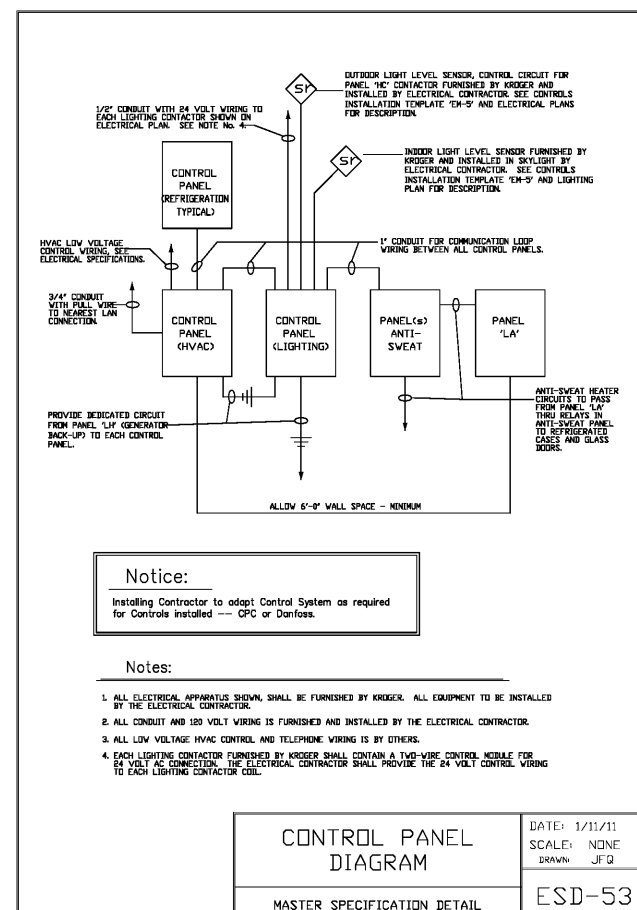
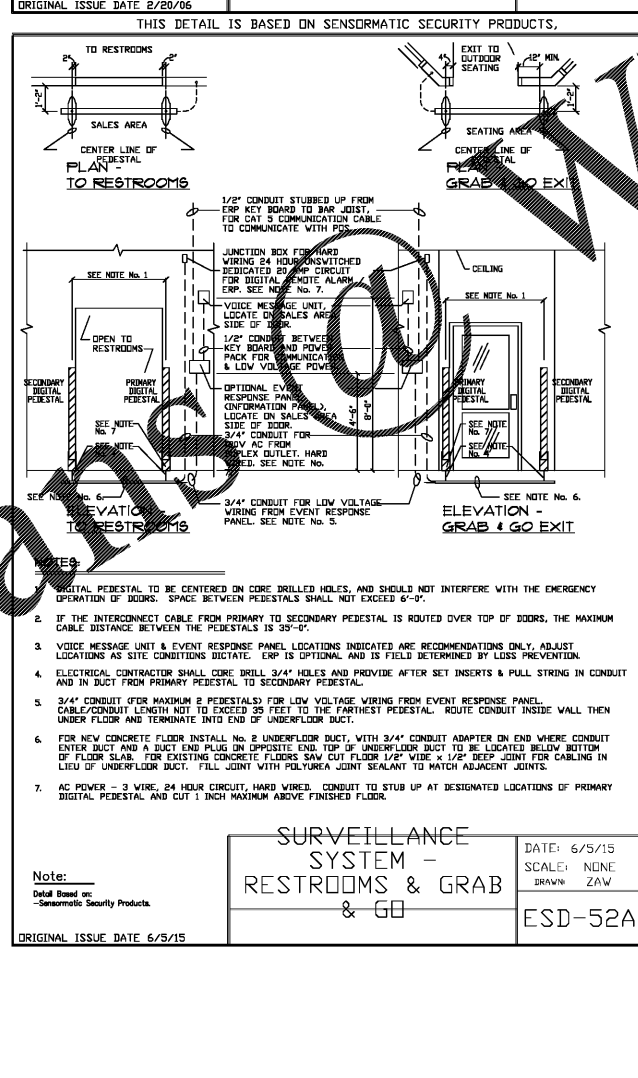
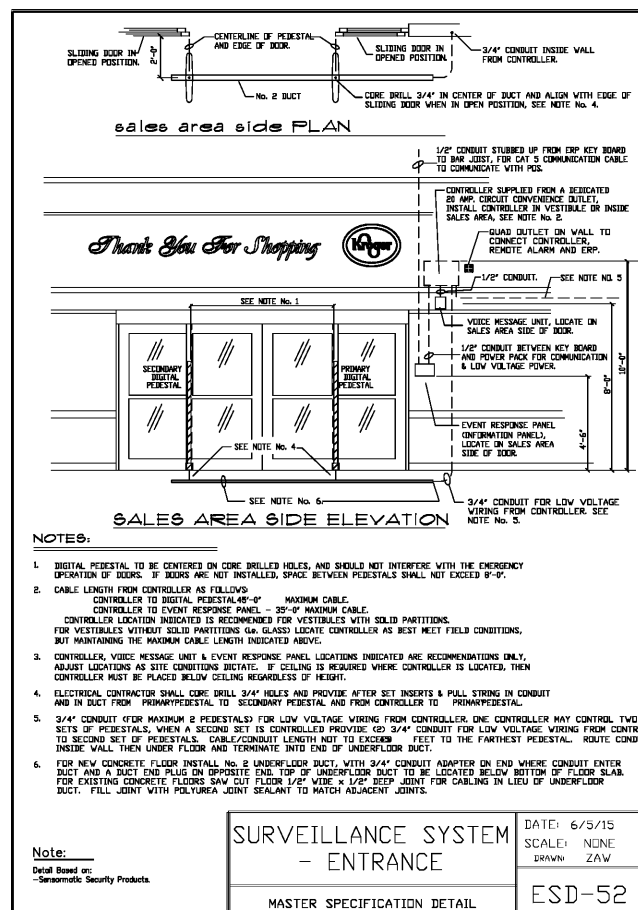
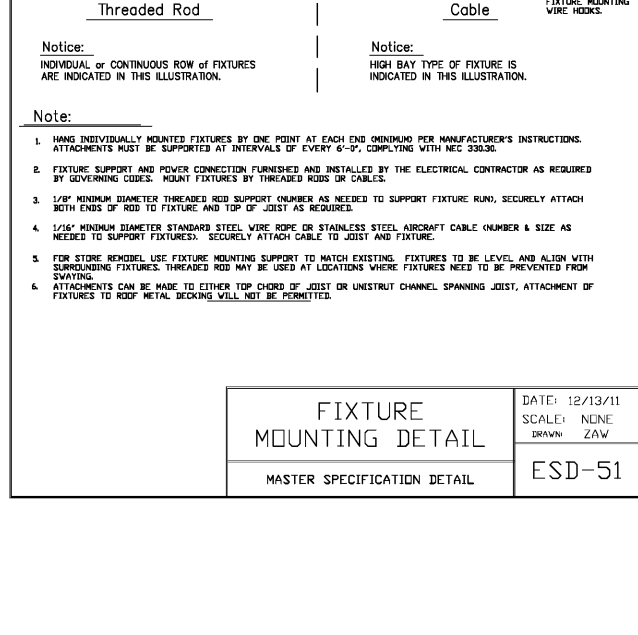
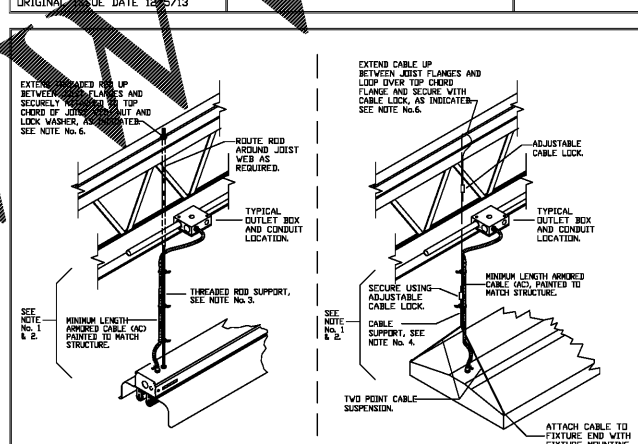
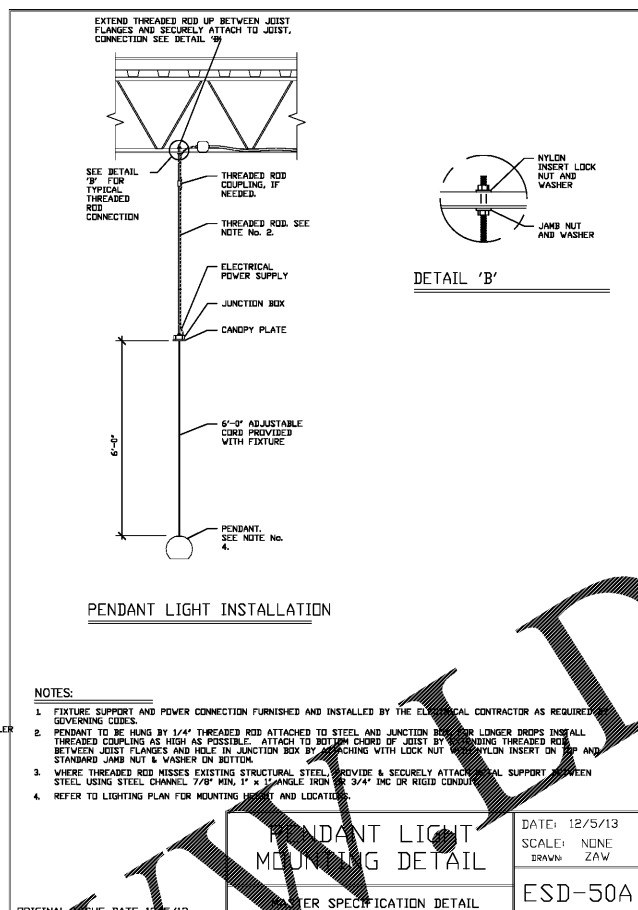
ELECTRICAL STANDARD DETAILS (ESD)

COPYRIGHT
All drawings and specifications are the property of Kevin E. Norris, Electrical Engineer, Inc. No part of this document may be reproduced, stored in a retrieval system, or transmitted in any form or by any means, electronic, mechanical, photocopying, recording, or by any information storage and retrieval system, without the prior written permission of Kevin E. Norris, Electrical Engineer, Inc. This document is intended for use only in the project identified herein. It is not to be used for any other project without the prior written permission of Kevin E. Norris, Electrical Engineer, Inc. The user assumes all liability for any errors or omissions in this document. © 2019 Kevin E. Norris, Electrical Engineer, Inc.

ISSUE DATE: March 04, 2019
PROJECT NO: 219206 / 19001
SHEET NUMBER: **E-5.1.2**



NOTICES:
LIGHT FIXTURE ROWS & TRACK LIGHTING SHALL BE INSTALLED AFTER THE CASES HAVE BEEN INSTALLED -- TO ASSURE PROPER ALIGNMENT.
REFER TO CURRENT LIGHTING REFERENCE DRAWINGS FOR ADDITIONAL INFORMATION AND CURRENT LIGHTING SPECIFICATIONS.



Order Plans

UNWRAPPED

UNWRAPPED

UNWRAPPED

UNWRAPPED

UNWRAPPED