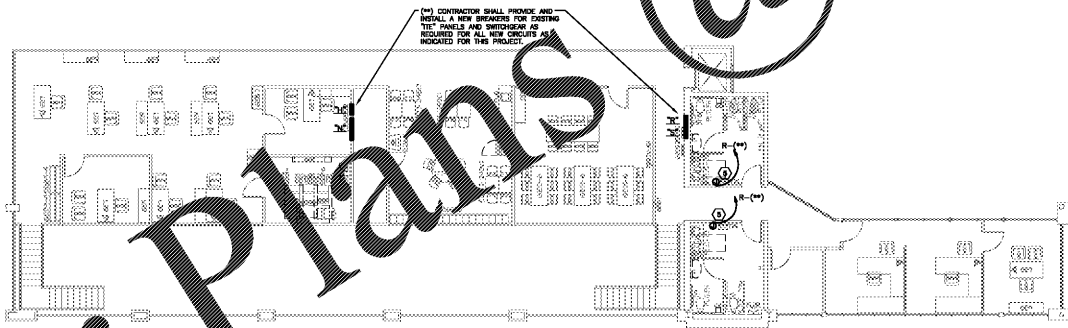


Table with columns: QUANTITY, NAME, STATUS, ELECTRICAL REQUIREMENTS. Lists various electrical components like switches, outlets, and lighting fixtures with their specifications.



OFFICE MEZZANINE LEVEL - POWER PLAN
SCALE: 3/32" = 1'-0"

SPECIFIC POWER PLAN NOTES:

- 1. SET JUNCTION BOXES 8" A.F.F. TO TOP OF BOX AND EXTEND CONDUIT AND CONDUCTORS TO CASE A/S HEATERS PANELS AND CONNECT NEW CIRCUITS AS NOTED.
2. SET JUNCTION BOXES 8" A.F.F. TO TOP OF BOX AND EXTEND CONDUIT AND CONDUCTORS TO CASE FANS PANELS AND CONNECT NEW CIRCUITS AS NOTED.
3. SET JUNCTION BOXES 8" A.F.F. TO TOP OF BOX AND EXTEND CONDUIT AND CONDUCTORS TO CASE LIGHTING PANELS AND CONNECT NEW CIRCUITS AS NOTED.
... (Notes 1-40) ...

LEGEND table with columns: SYMBOL, DESCRIPTION. Lists symbols for fluorescent fixtures, switches, outlets, and other electrical components.

WIRING DEVICE NOTE: ALL WIRING DEVICES LOCATED ADJACENT TO ONE ANOTHER AT THE SAME HEIGHT SHALL BE GROUPED TOGETHER WITH BUILT-IN GANG WALL PLATE WHEN POSSIBLE. HIGH VOLTAGE AND LOW VOLTAGE WIRING SHALL NOT BE INSTALLED IN SAME BOX.



NO. REVISIONS table with columns for revision number and description.

REVISIONS table with empty rows for recording changes.

A With-in-the-Walls Remodel for:
KROGER STORE #GA-483 SNELLVILLE
1670 STATE HWY 124, SUITE 'F', SNELLVILLE, GEORGIA 30078

POWER PLAN NOTES, SCHEDULE AND LEGEND

COPYRIGHT
All drawings and specifications are the property of D&E Dollars & Fitters, Inc. No part of this drawing may be reproduced without the written consent of D&E Dollars & Fitters, Inc.

ISSUE DATE: March 04, 2019

PROJECT NO: 219206 / 19001

SHEET NUMBER: E-1.3-1

KEVIN E. NORRIS
ELECTRICAL ENGINEER
9518 WALLWOOD ROAD
INDUSTRIAL PARK
SNELLVILLE, GA 30078
PHONE: (678) 504-3063