

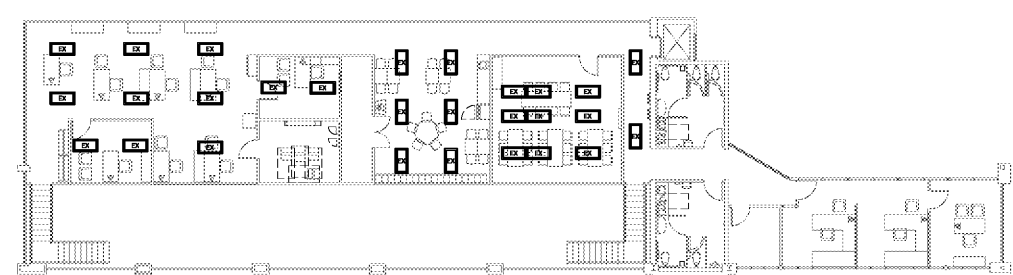
Order Plans

MECHANICAL ROOMS - POWER PACKS / SCHEDULES table with columns for room name, location, and equipment details.

Main lighting fixture schedule table with columns for description, quantity, fixture type, and notes.

Second lighting fixture schedule table with columns for description, quantity, fixture type, and notes.

NOTES section containing electrical specifications, lighting requirements, and installation instructions.



OFFICE MEZZANINE LIGHTING PLAN SCALE: 3/32" = 1'-0"

D&E DOLLAR & FITZGIBbons ARCHITECTURE, INC. logo and contact information.

Professional Engineer seal for Kevin E. Norris, State of Georgia, License No. 0319419.

REVISIONS table with columns for revision number, description, and date.

Project information including store name (KROGER STORE #GA-483 SNELLVILLE), address (1670 STATE HWY 124, SUITE 'F', SNELLVILLE, GEORGIA 30078), and sheet title (LIGHTING DETAILS AND SCHEDULES).

COPYRIGHT notice regarding intellectual property and reproduction rights.

Professional Engineer information for Kevin E. Norris, Electrical Engineer, including address and phone number.