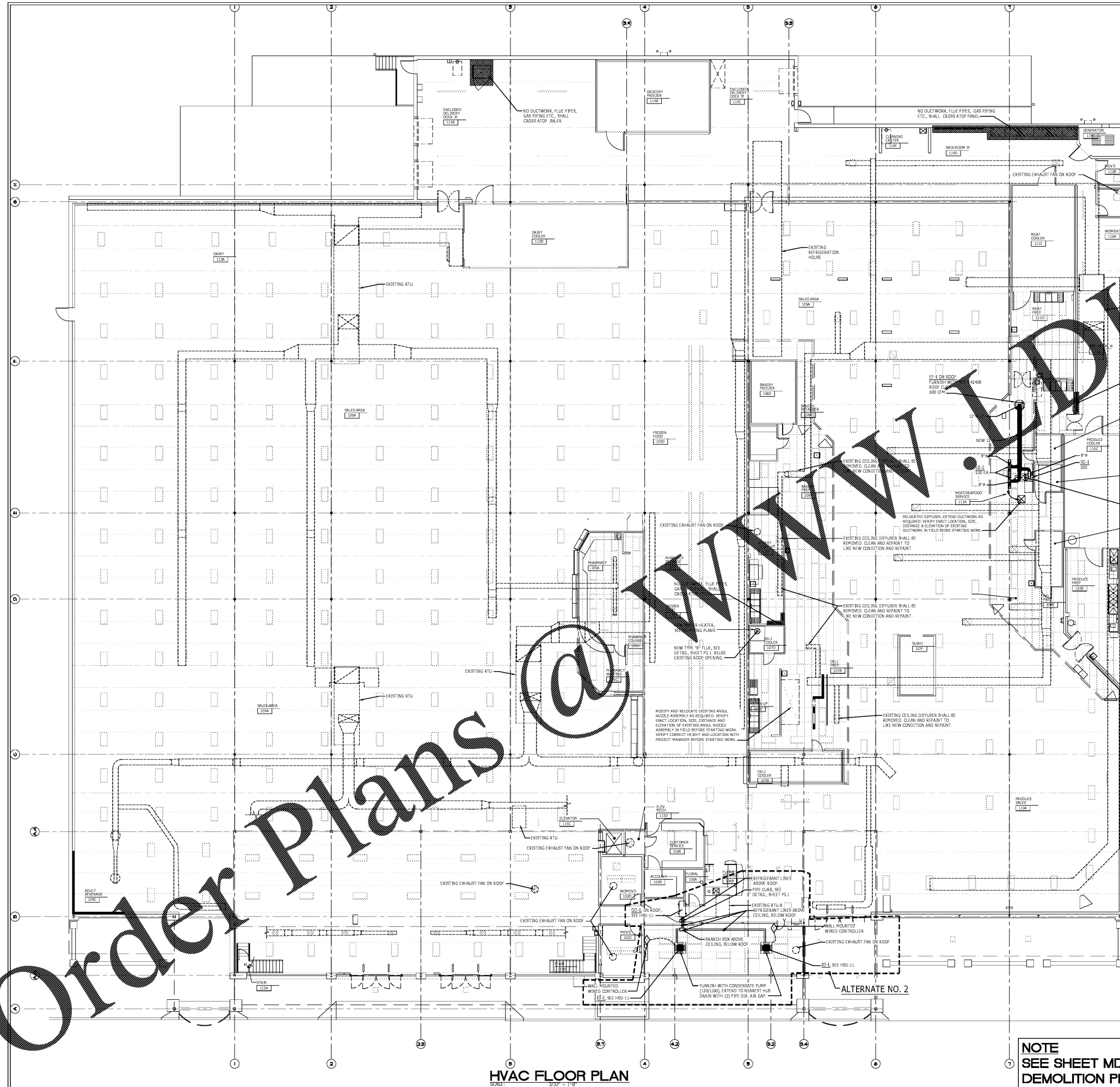


Order Plans @ www.dollandf.com



HVAC LEGEND

[Symbol]	SUPPLY DIFFUSER	[Symbol]	RECTANGULAR DUCT TAKE-OFF
[Symbol]	RETURN GRILLE	[Symbol]	ROUND DUCT TAKE-OFF
[Symbol]	EXHAUST FAN OR GRILLE (SEE DWG. FOR DISTINCTION)	[Symbol]	MANUAL VOLUME DAMPER
[Symbol]	SIDEWALL SUPPLY GRILLE	[Symbol]	FIRE DAMPER
[Symbol]	SIDEWALL RETURN GRILLE	[Symbol]	DESTINATION
[Symbol]	FLEXIBLE DUCT CONNECTION	[Symbol]	CM
[Symbol]	RECTANGULAR DUCT ELBOW	[Symbol]	WALL MOUNTED THERMOSTAT (48" A.F.F.)
[Symbol]	ROUND DUCT ELBOW	[Symbol]	HUMIDITY SENSOR (48" A.F.F.)
[Symbol]	DUCT TRANSITION	[Symbol]	UNDRY
[Symbol]	NEW DUCTWORK	[Symbol]	GRILLE
[Symbol]	SPLITTER DAMPER	[Symbol]	NO DUCTWORK, VERIFY EXACT PIPE SIZE & LOCATION IN FIELD BEFORE STARTING WORK.
[Symbol]	ELECTRIC FAN	[Symbol]	AIR HANDLING UNIT
[Symbol]	GAS UNIT	[Symbol]	SENSING UNIT
[Symbol]	HOOD	[Symbol]	TOP UNIT
[Symbol]		[Symbol]	ELECTRIC DUCT HEATER

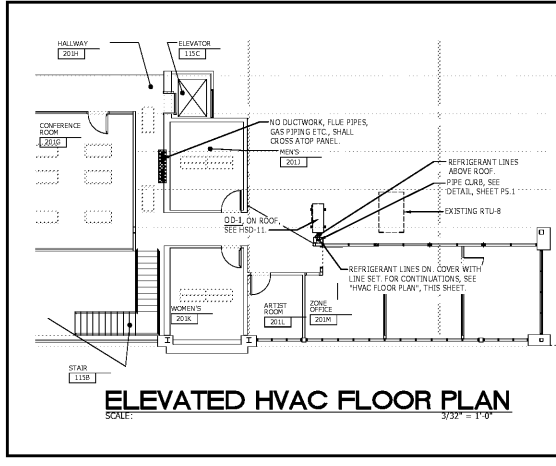
- GENERAL NOTES:**
- THESE DRAWINGS ARE BASED ON ORIGINAL STORE DRAWINGS. CONTRACTOR TO FIELD VERIFY EXISTING CONDITIONS PRIOR TO BIDDING OR PROJECT. WHERE ANY EQUIPMENT ON ROOF IS DISTURBED, IT IS THE HVAC CONTRACTOR'S RESPONSIBILITY TO COORDINATE WITH THE G.C. FOR THE REPAIR OF ANY ROOFING ITEMS AFTER THE COMPLETION OF HVAC WORK.
 - ALL EQUIPMENT SHALL BE CONSIDERED EXISTING UNLESS OTHERWISE NOTED. EXISTING EQUIPMENT NOT SHOWN SHALL REMAIN UNCHANGED.
 - DAMAGED DIFFUSERS, IT IS THE CONTRACTOR'S RESPONSIBILITY TO IDENTIFY AND REPAIR ANY DAMAGED DIFFUSERS.
 - PER BID, LOCATE AND ITEMIZE EXPECTED QUANTITY OF DAMAGED DIFFUSERS TO BE REPLACED.
 - CONSTRUCTION: COORDINATE WITH KROGER ENGINEER FOR REPLACING OF DAMAGED DIFFUSERS.
 - EXISTING DIFFUSERS TO REMAIN, IT IS THE CONTRACTOR'S RESPONSIBILITY TO CLEAN ALL EXISTING DIFFUSERS AND RETURN GRILLES THAT ARE NOT REPLACED.
 - UNUSED DUCTWORK & DIFFUSERS SHALL BE TAKEN DOWN AND PROPERLY DISPOSED OF.

- DUCTWORK LEGEND:**
- NEW DUCTWORK
 - - - EXISTING DUCTWORK
 - ||||| EXISTING DUCTWORK TO BE REMOVED
- DUCTWORK NOTES:**
- H.V.A.C. WORK SHOWN ON THIS PLAN SHALL BE REMOVED UNLESS NOTED OTHERWISE.
 - REMOVE AS FIELD CONDITIONS WARRANT ALL EXISTING H.V.A.C. AS REQUIRED. CONFIRM WITH PROJECT MANAGER BEFORE REMOVAL. DISPOSE OF ALL MATERIAL REMOVED AND NOT REUSED AS DIRECTED BY THE OWNER.
 - EXISTING MATERIALS REMOVED MAY BE REUSED WHERE PRACTICAL, IF PRIOR APPROVAL IS OBTAINED FROM THE ARCHITECT AND PROJECT MANAGER.

POINT OF CONNECTION

⊕ = POINT OF CONNECTION FOR NEW DUCTWORK. CONNECT NEW DUCTWORK TO EXISTING DUCTWORK, VERIFY EXACT SIZE, LOCATION, DISTANCE & ELEVATION IN FIELD BEFORE STARTING WORK.

HSD DETAILS
SEE HSD DETAILS ON SHEET M3.1



NOTE
SEE SHEET MD1.1 FOR DEMOLITION PLAN.

JGC
Jon G. Crye
Consulting Engineer
201 SHERLAKE LANE, SUITE 101
KNOXVILLE, TENNESSEE 37922
PHONE: (865)-588-5348 FAX: (865)-247-0293

D&E DOLLAR & FEVERS ARCHITECTURE, INC.
1500 N. W. 10th St., Suite 101
Knoxville, TN 37915
615-545-1111 • Fax: 615-673-9028
www.dollarandfevers.com

Professional Seal:
J. G. Crye
Professional Engineer
No. 77201
Mechanical
KROGER STORE #GA-483

REVISIONS

NO.	REVISIONS

A With-in-the-Walls Remodel for:
KROGER STORE #GA-483 SNELLVILLE
1670 STATE HWY 124, SUITE 'F', SNELLVILLE, GEORGIA 30078

HVAC FLOOR PLAN

COPYRIGHT
All rights reserved. No part of this drawing may be reproduced, stored in a retrieval system, or transmitted in any form or by any means, electronic, mechanical, photocopying, recording, or by any information storage and retrieval system, without the prior written permission of the copyright owner.

COPYRIGHT

ISSUE DATE: MARCH 04, 2019
PROJECT NO: 219206
SHEET NUMBER: M 1 . 1