

STATE OF GEORGIA
REGISTERED PROFESSIONAL ELECTRICAL ENGINEER
No. 10000

NO.	REVISIONS

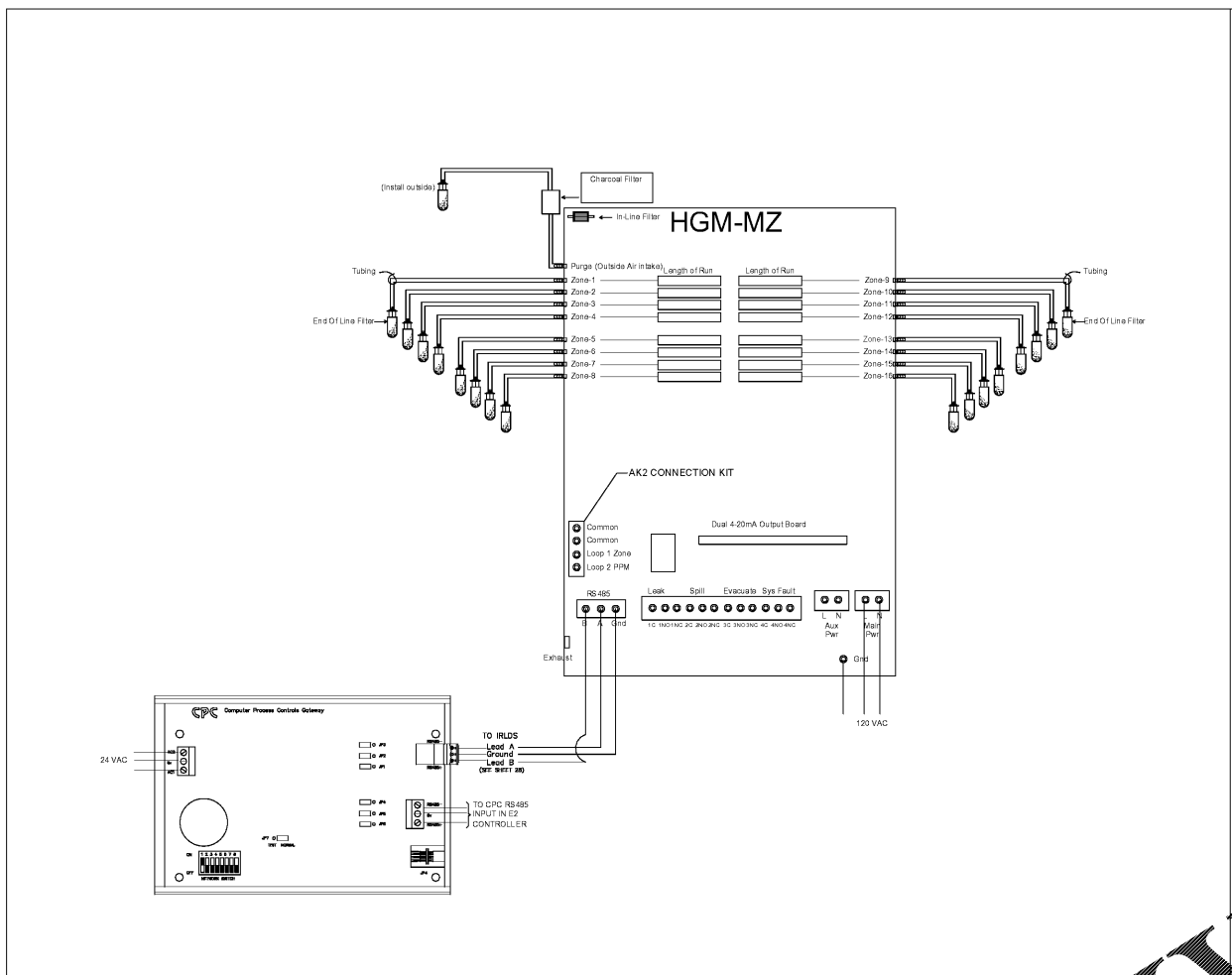
A With-in-the-Walls Remodel for:
KROGER STORE #GA-483 SNELLVILLE
1670 STATE HWY 124, SUITE 'F', SNELLVILLE, GEORGIA 30078

REFRIGERATION LEAK DETECTION DETAILS

COPYRIGHT
All drawings are the property of D&E Architectural, Inc. and shall remain the property of D&E, Inc. and shall not be reproduced or transmitted in any form or by any means, electronic, mechanical, photocopying, recording, or by any information storage and retrieval system, without the prior written permission of D&E Architectural, Inc. © 2019

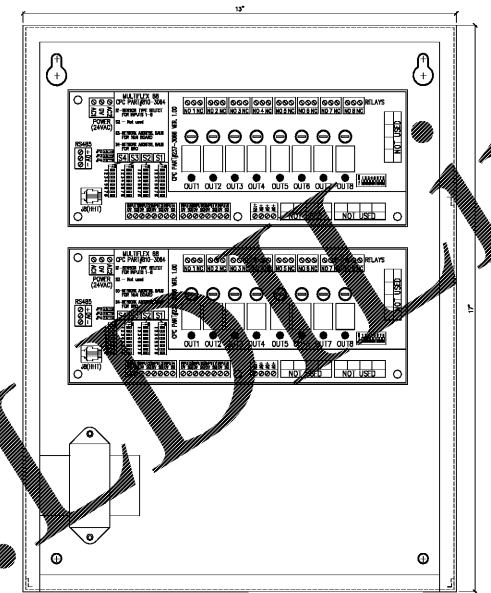
COPYRIGHT

ISSUE DATE:	MARCH 04, 2019
PROJECT NO:	219206
SHEET NUMBER:	RLD1.2



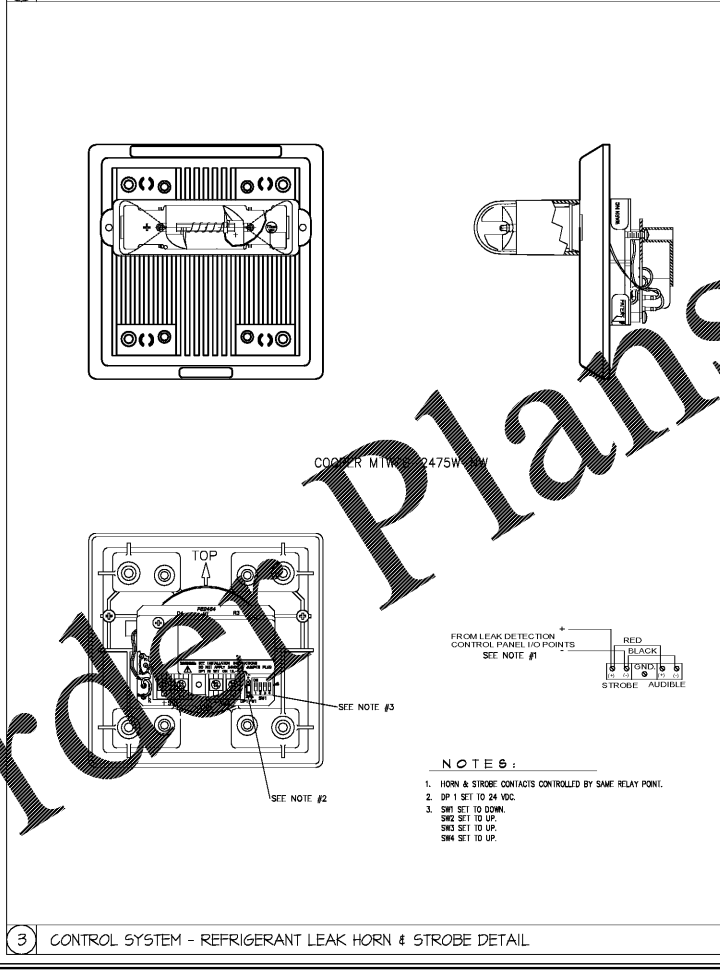
- NOTE:**
1. INSTALL ENCLOSURE ON A VIBRATION FREE SURFACE. MARK HOLE LOCATIONS. USE APPROPRIATE HARDWARE FOR MOUNTING TO STRUCTURE.
 2. FOLLOW ALL NATIONAL AND LOCAL ELECTRICAL CODES WHEN INSTALLING.
 3. WHEN INSERTING WIRING, BE SURE HIGH AND LOW VOLTAGE ARE KEPT ISOLATED.
 4. ALL REMOVED KNOCKOUTS MUST HAVE CONDUIT FITTINGS INSTALLED.

- REFRIGERANT LEAK DETECTION CONTROL PANEL:**
- ONE (1) ENCLOSURE (INSTALLER SUPPLIED & MOUNTED)
 - CPC POWER SUPPLY (INSTALLER MOUNTED)
 - TWO (2) 8A1/BRO COMBO BOARD (INSTALLER MOUNTED)

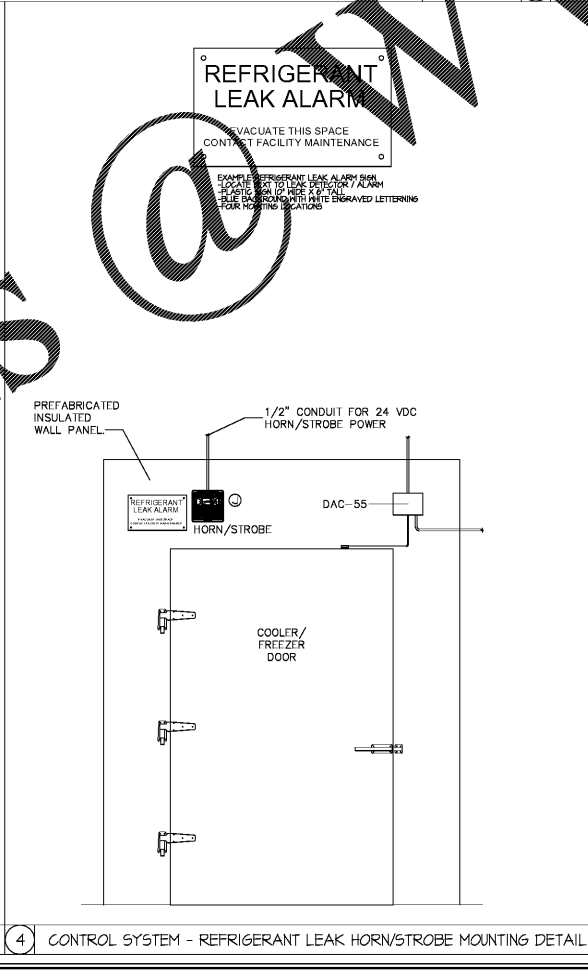


1 REFRIGERANT LEAK DETECTION UNIT - HGM MZ

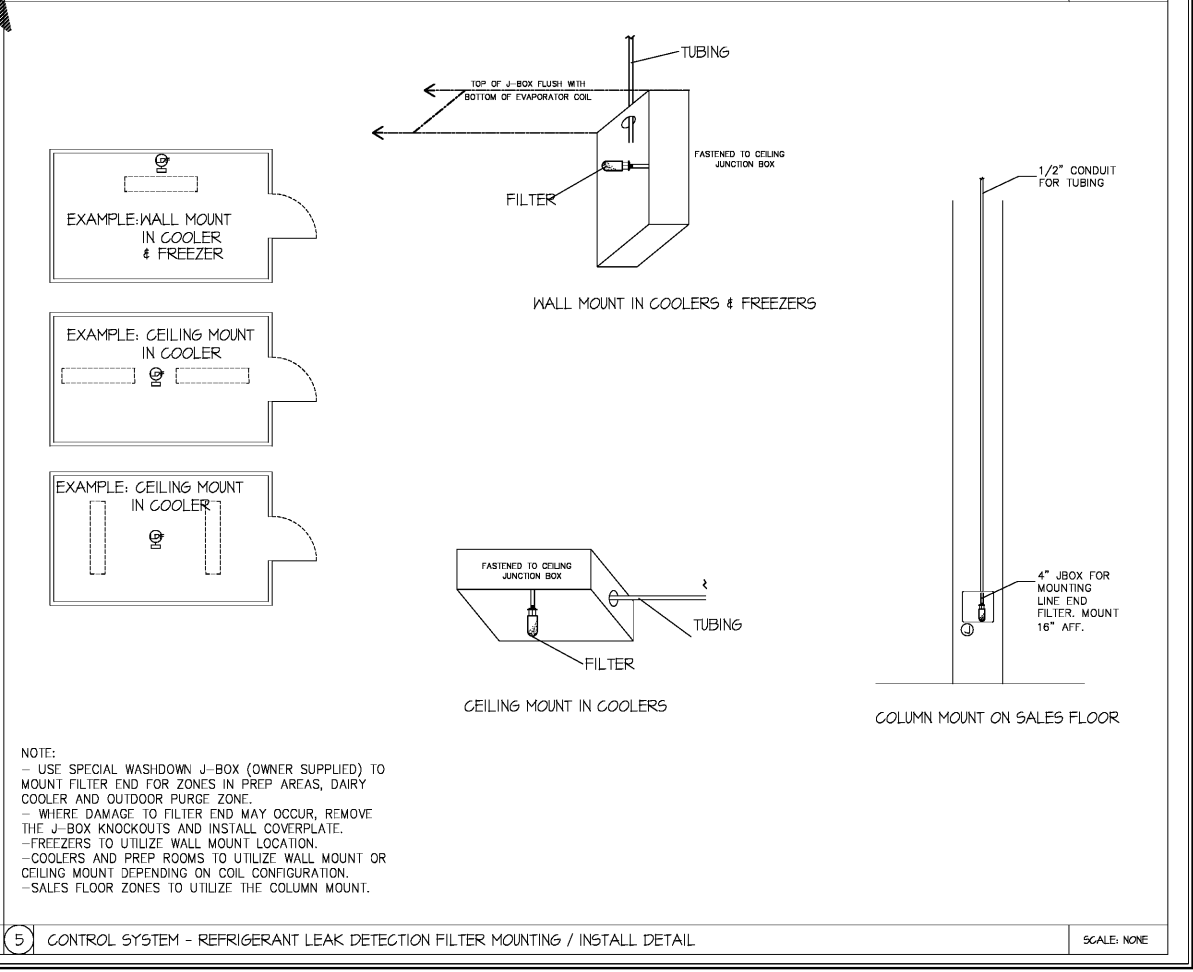
2 CONTROL SYSTEM - DANFOSS LEAK DETECTION CONTROL PANEL



3 CONTROL SYSTEM - REFRIGERANT LEAK HORN & STROBE DETAIL



4 CONTROL SYSTEM - REFRIGERANT LEAK HORN/STROBE MOUNTING DETAIL



5 CONTROL SYSTEM - REFRIGERANT LEAK DETECTION FILTER MOUNTING / INSTALL DETAIL

Order Plans

www.lldline.com