



ARCHITECTURE, INC.
1500 Peachtree Street, N.E.
Atlanta, Georgia 30309
Phone: 404.525.7915
Fax: 404.525.7928
www.dollarandfewers.com



NO.	REVISIONS

A With-in-the-Walls Remodel for:

KROGER STORE #GA-483 SNELLVILLE

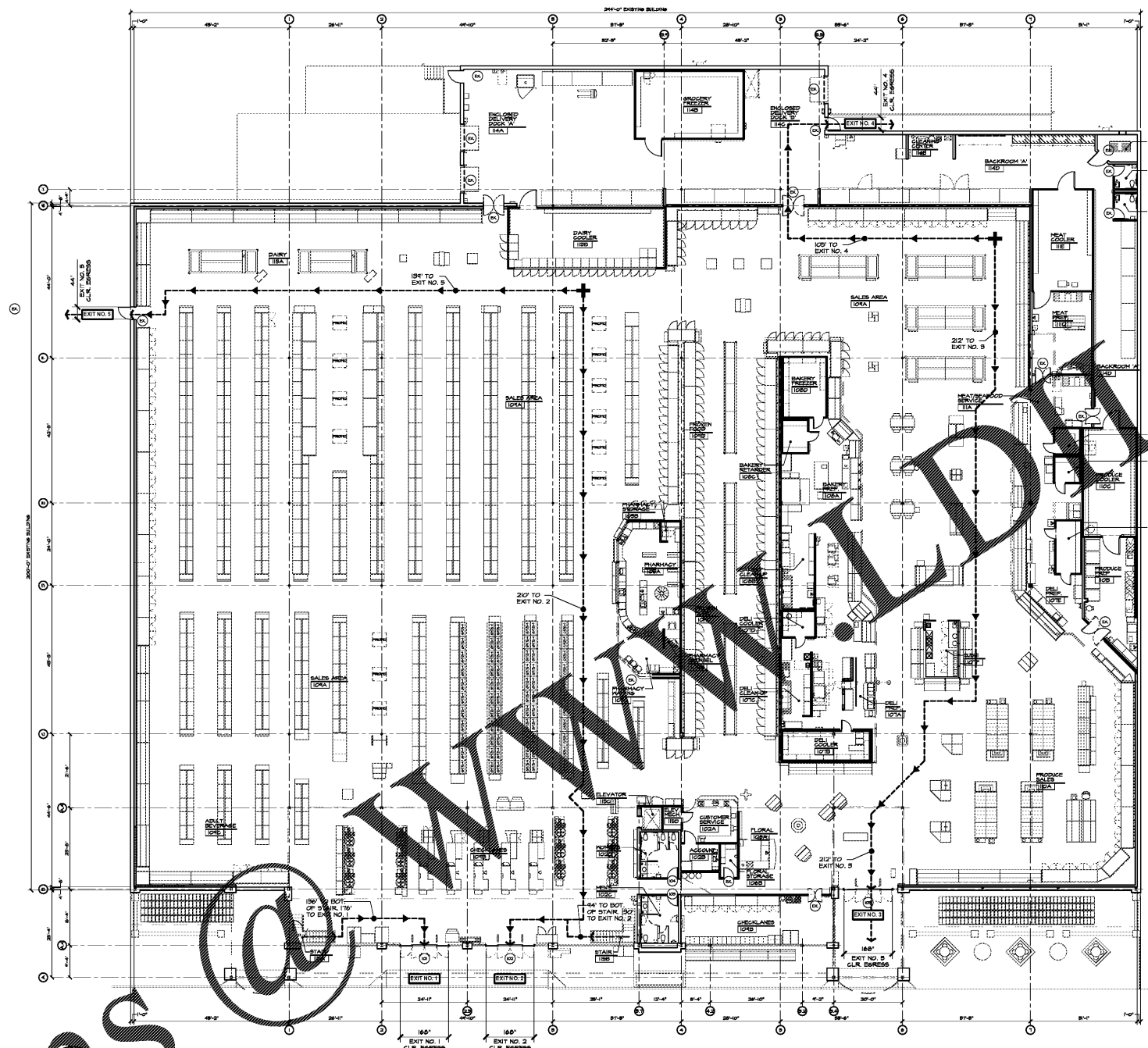
1670 STATE HWY 124, SUITE 'F', SNELLVILLE, GEORGIA 30078

LIFE SAFETY PLAN, NOTES & LEGEND

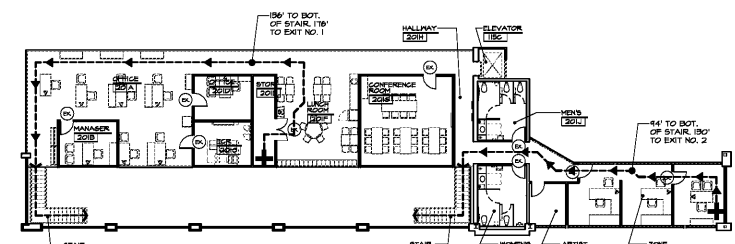
COPYRIGHT
All drawings, specifications and computer programs are the property of Dollar & Fewers Architecture, Inc. No part of this drawing may be reproduced or transmitted in any form or by any means, electronic, mechanical, photocopying, recording, or by any information storage and retrieval system, without the prior written permission of Dollar & Fewers Architecture, Inc. This drawing is to be used only for the project and location specified herein. It is not to be used for any other project, location, or purpose without the prior written permission of Dollar & Fewers Architecture, Inc. The user of this drawing assumes all liability for any errors or omissions. The user of this drawing is advised that it is not to be used for any other project, location, or purpose without the prior written permission of Dollar & Fewers Architecture, Inc.

COPYRIGHT

ISSUE DATE: MARCH 04, 2019
PROJECT NO: 219206
SHEET NUMBER: G0.2



LIFE SAFETY PLAN
SCALE: 1/8" = 1'-0"



ASSOCIATE MEZZANINE LIFE SAFETY PLAN
SCALE: 1/8" = 1'-0"

SYMBOL LEGEND:
 (1) DOOR SYMBOL, SEE SHEET ASD FOR DOOR SCHEDULE, ELEVATIONS AND DETAILS.
 -> EXIT NO. EGRESS PATH AND EXIT.

PROJECT CODE DATA			
USE GROUP CLASSIFICATION:		MERCANTILE	
TYPE OF CONSTRUCTION:	(ALLOWABLE) (ACTUAL)	(IBC) TYPE I-2	
HEIGHT:	55 FEET	20'-2"	
STORIES:	4 STORIES	1 + MEZZ.	
GROSS BUILDING AREA:	UNLIMITED (507.3)	71,536	SQ. FT.
BUILDING AREA (PERMIT):			SQ. FT.
SPRINKLED:		YES	
FIRE ALARM:		YES	
CLIMATE ZONE:	(IEC 301.1)	4A	
SEISMIC DESIGN CATEGORY:		C	
MAX. EXIT ACCESS FROM MEZZ.	(LSC 37.2.4.5)	75 FEET	
MAX. DEAD END CORRIDOR	(LSC 37.2.5.2)	50 FEET	
MAX. TRAVEL DISTANCE	(LSC 37.2.6.1)	250 FEET	
NOTE: THE REQUIREMENTS OF CHAPTER 34 OF THE IBC WILL APPLY TO THIS STRUCTURE FOR ALTERATIONS.			

Occupancy Load per NFPA 101 Life Safety Code (LSC) table 7.3.1.2			
Space Type	Area (SQ. FT.)	Occupant Factor	Occupant Load
Sales Area	30,835	30	1,028
Prep and Storage	15,679	300	52
This includes coolers and freezers, prep areas, bedroom, stocks, miscels, mechanical/electrical and other.			
Office Areas	4,625	100	48
This includes all offices, conference rooms, customer service, restrooms and other.			
Total Occupancy			1,794

Number of Exits & Egress Width per inch			
Required Egress (LSC 7.3.3.1)	(Total Occupancy x 0.2 per person) = 358		
Exits Provided			
Door Size	No. of Doors	Inches	
1'-6" Auto Door - Double Slider	3	465	
3'-8" Swing	2	52	
Total Egress Provided per inch	547		
Number of Exits Required (LSC 7.4.1.2)	4		
Number of Exits Provided	5		

Plumbing Fixtures:			
(IPC) Table 403.1 (IPC) Occupancy Classification	MERCANTILE		
Required	Men	Women	Unisex
Water Closets (1 per 500)	2	2	N/A
Urinals (IPC 419.2)	N/A	N/A	N/A
Lavatories (1 per 750)	2	2	N/A
Drinking Fountains (1 per 1000)	2		
Provided	Men	Women	Unisex
Water Closets (1 per 500)	2	2	N/A
Urinals	2	N/A	N/A
Lavatories (1 per 750)	3	3	N/A
Drinking Fountains (1 per 1000)	2		

Order Plans @ www.dollardfewers.com