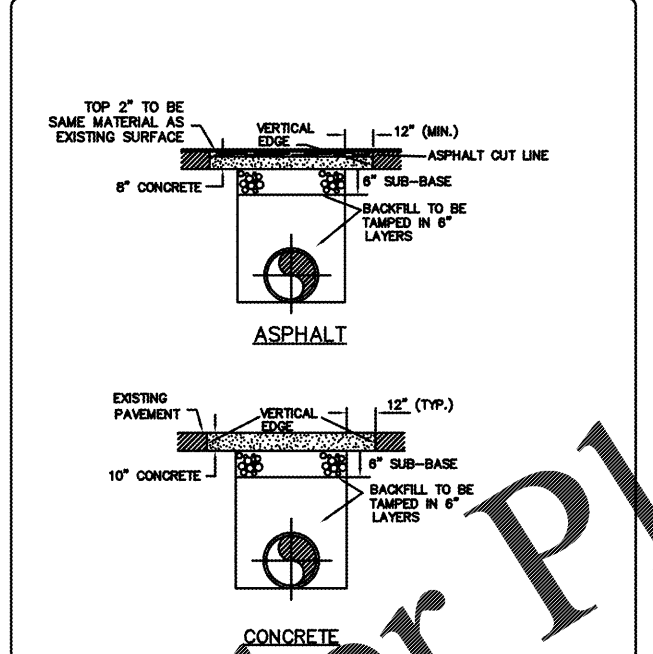
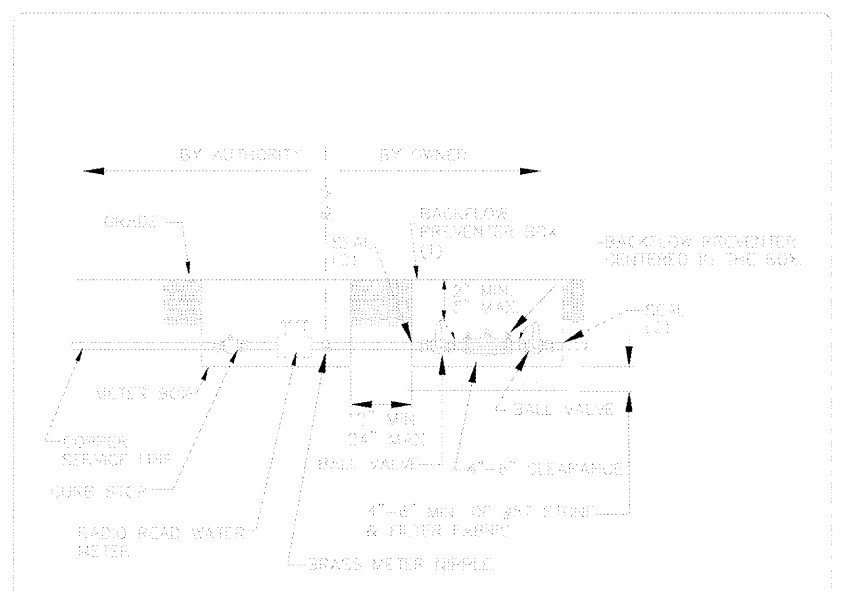


WATER METER INSTALLATION DETAIL
WATER SERVICE LINE
 NOT TO SCALE
 REVISED OCT 2015
 STANDARD DRAWING No. A-11

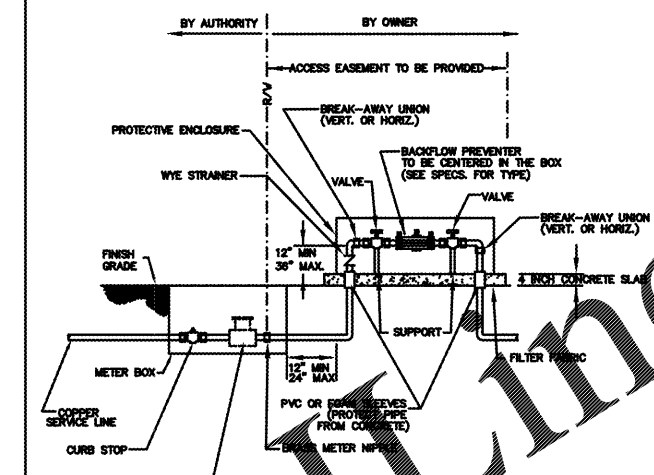


PAVEMENT REPLACEMENT
 NOT TO SCALE
 REVISED OCT 2015
 STANDARD DRAWING No. A-14



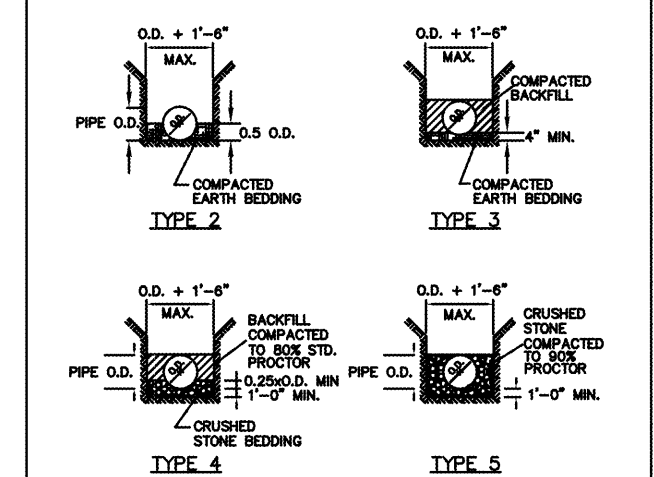
- (1) Leak proof backflow prevention box minimum dimensions 15" H x 18" W x 4" D. All test cocks & valves must be easily accessible.
- (2) Ends sealed with a gasket or foam or silicone caulk on both sides to prevent dirt and water from entering box.
- * Test cocks fitted with brass or plastic plugs or caps.
- (3) Device secured in place with easily accessible break-away unions (Built in on some models)
- (4) Recommended that all related appurtenances to the BFP device be copper or brass.
- (5) Four to six inches of gravel.
- (6) Four to six inches of clearance from top of grave to bottom of device.
- (7) For Polaris use only.

COMMERCIAL 5/8 - 2" WATER METER AND BACKFLOW PREVENTION DEVICE
 NOT TO SCALE
 REVISED OCT 2015
 STANDARD DRAWING No. A-13B



- HOT BOX PROTECTIVE ENCLOSURE SHOULD BE HEATED OR INSULATED TO PROTECT FROM FREEZING.
- RP ENCLOSURE SHOULD BE FREEZE-PROOF WITH GROUND REMOVAL CAPABILITY AND LOCKABLE LID
- APPROVED INSULATED ENCLOSURE MUST HAVE A DRAIN PORT APPROPRIATELY SIZED TO ALLOW DISCHARGE OF WATER IN THE EVENT THE RP VALVE OPENS.
- DEVICE SECURED IN PLACE W/ BREAK-AWAY UNIONS (BUILT IN ON SOME MODELS)
- WYE STRAINER INSTALLED ON THE INLET SIDE OF DEVICE
- PROTECTIVE PVC OR FIBER SLEEVES THROUGH CONCRETE
- RECOMMEND THAT ALL RELATED APPURTENANCES TO THE BFP DEVICE BE COPPER OR BRASS.

COMMERCIAL WATER METER AND RPZ BOX
 NOT TO SCALE
 REVISED OCT 2015
 STANDARD DRAWING No. A-13C



TYPICAL PIPE BEDDING DETAILS
STANDARD LAYING CONDITION FOR PIPE
 NOT TO SCALE
 REVISED OCT 2015
 STANDARD DRAWING No. A-17



georgia civil
 CIVIL ENGINEERING
 LANDSCAPE ARCHITECTURE
 LAND SURVEYING
 311 N. Main St., Unit C, Suite 101
 P.O. Box 868 | Madison, GA 30650
 P: 706.342.1104 | F: 706.342.1105
 www.georgiacivil.com



Project Information

GINN CDR&J
 0025-041, 0025-042, PORTION OF 0025-042B
 ACCESS ROAD - FAIRVIEW ROAD INTERSECTION
 COVINGTON, GA
 NEWTON COUNTY
 CG-GENERAL COMMERCIAL (NEWTON COUNTY)

DRAWING DATE:	2/15/2019
DRAWN BY:	SPO
CHECKED BY:	SPO
REVISIONS	
DATE:	DESCRIPTION:

© Copyright 2016 georgia civil, inc.
 This document and its reproduction are the property of Georgia Civil, Inc. and may not be reproduced, published, or used in whole or in part without the written consent of Georgia Civil, Inc.
 Sheet Title

SITE WORK DETAILS

Sheet Number
C-11.3