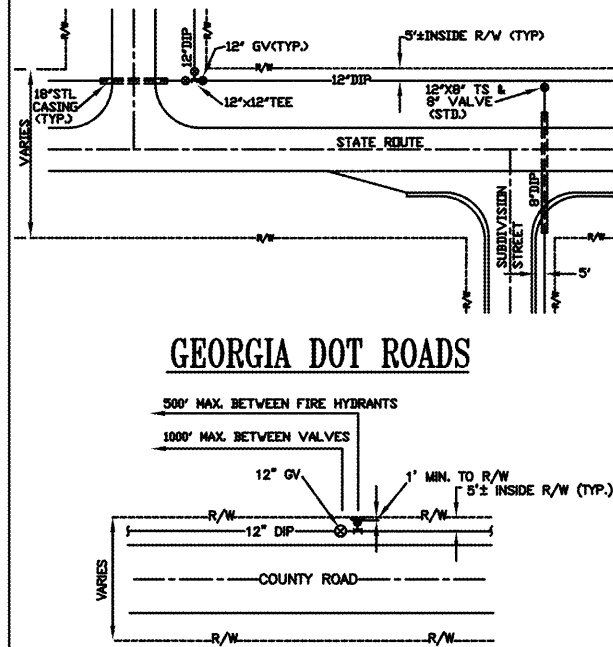


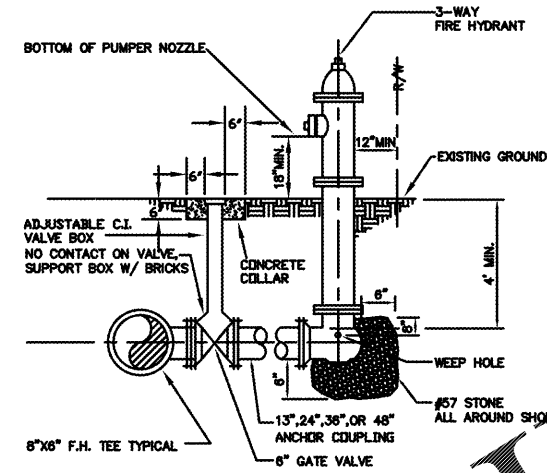
TEE INTERSECTION

**WATER MAIN LOCATION  
SUBDIVISION STREET**  
NOT TO SCALE  
REVISED OCT 2015  
STANDARD DRAWING No. A-2



NEWTON COUNTY ROADS

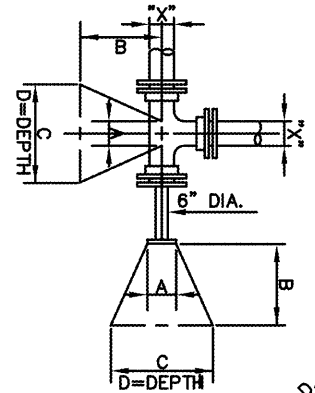
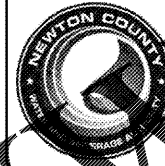
**WATER MAIN LOCATION  
ROADWAYS**  
NOT TO SCALE  
REVISED OCT 2015  
STANDARD DRAWING No. A-4



NOTES: FOR MAIN SIZES 16-INCH AND LARGER, 6-INCH GV MAY BE CONNECTED TO MAIN BY TAPPING SADDLE AND ANCHOR COUPLING IN LIEU OF HYDRANT TEE

FIRE HYDRANT INSTALLATION  
ROADS AND HIGHWAYS

NOT TO SCALE  
REVISED OCT 2015  
STANDARD DRAWING No. A-7



**TYPICAL BLOCKING DETAIL**  
NOT TO SCALE  
REVISED OCT 2015  
STANDARD DRAWING No. A-8

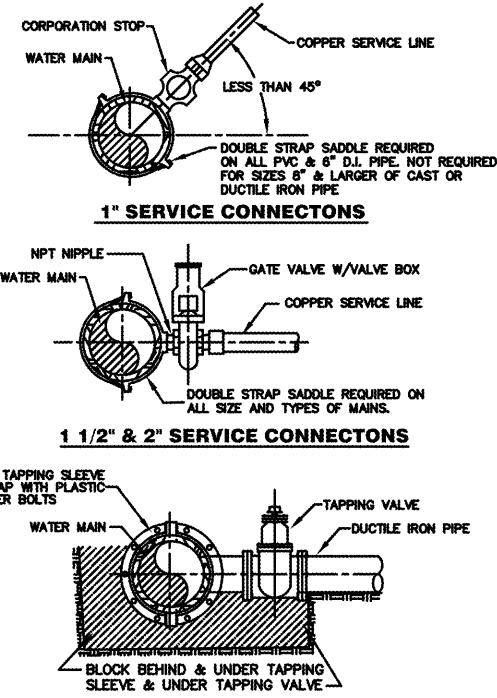


BLOCKING DIMENSIONS					
DEAD END & TEES	X*	A	B	C	D
16"	1'-3"	3'-6"	7'-6"	4'-9"	
12"	1'-0"	3'-0"	5'-6"	3'-6"	
10"	1'-0"	2'-6"	4'-9"	3'-0"	
8"	0'-10"	2'-0"	4'-0"	2'-6"	
6"	0'-8"	1'-6"	2'-9"	1'-9"	
16"	1'-3"	5'-6"	9'-0"	5'-6"	
12"	1'-0"	3'-0"	6'-9"	4'-3"	
10"	1'-0"	3'-0"	5'-9"	3'-6"	
8"	0'-8"	2'-6"	4'-9"	3'-0"	
6"	0'-8"	1'-6"	3'-6"	2'-9"	
16"	1'-3"	6'-6"	9'-0"	4'-3"	
12"	1'-0"	3'-0"	6'-3"	3'-3"	
10"	1'-0"	2'-3"	4'-6"	2'-9"	
8"	0'-10"	1'-6"	3'-6"	2'-3"	
6"	0'-8"	1'-3"	2'-6"	1'-6"	
16"	1'-3"	1'-6"	4'-9"	3'-0"	
12"	1'-0"	1'-6"	3'-6"	2'-3"	
10"	1'-0"	1'-3"	3'-0"	2'-0"	
8"	0'-10"	1'-0"	2'-6"	1'-6"	
6"	0'-8"	1'-0"	1'-9"	1'-3"	
16"	1'-3"	1'-6"	3'-3"	2'-0"	
12"	1'-0"	1'-6"	2'-6"	1'-6"	
10"	1'-0"	1'-0"	2'-3"	1'-3"	
8"	0'-10"	1'-0"	1'-9"	1'-0"	
6"	0'-8"	1'-0"	1'-6"	0'-4"	

NOTE: MECHANICAL JOINT FITTINGS 4" I.D. AND LESS SHALL BE RESTRAINED WITH RETAINER GLANDS

X\* = DIAMETER OF PIPE TO BE BLOCKED  
250 PSI TEST PRESSURE 2000 PSF SOIL BEARING

**TYPICAL BLOCKING SIZES**  
REVISED OCT 2015  
STANDARD DRAWING No. A-9



3" & LARGER SERVICE CONNECTORS

**CONNECTIONS TO WATER MAINS**  
NOT TO SCALE

STANDARD DRAWING No. A-10



**georgia civil**  
CIVIL ENGINEERING  
LANDSCAPE ARCHITECTURE  
LAND SURVEYING  
311 N. Main St., Unit C, Suite 101  
P.O. Box 898 | Madison, GA 30650  
P: 706.342.1194 | F: 706.342.1105  
www.georgiacivil.com



Project Information

**GINN CDR&J**  
0025-041, 0025-042, PORTION OF 0025-042B  
ACCESS ROAD - FAIRVIEW ROAD INTERSECTION  
COVINGTON, GA  
NEWTON COUNTY  
CG-GENERAL COMMERCIAL (NEWTON COUNTY)

DRAWING DATE:	2/15/2019
DRAWN BY:	SPO
CHECKED BY:	SPO
REVISIONS	
DATE:	DESCRIPTION:

© Copyright 2016 georgia civil, inc.  
This document and its reproduction are the property of Georgia Civil, Inc. and may not be reproduced, published, or used in whole or in part without the written consent of Georgia Civil, Inc.  
Sheet Title

SITE WORK DETAILS

Sheet Number  
**C-11.2**