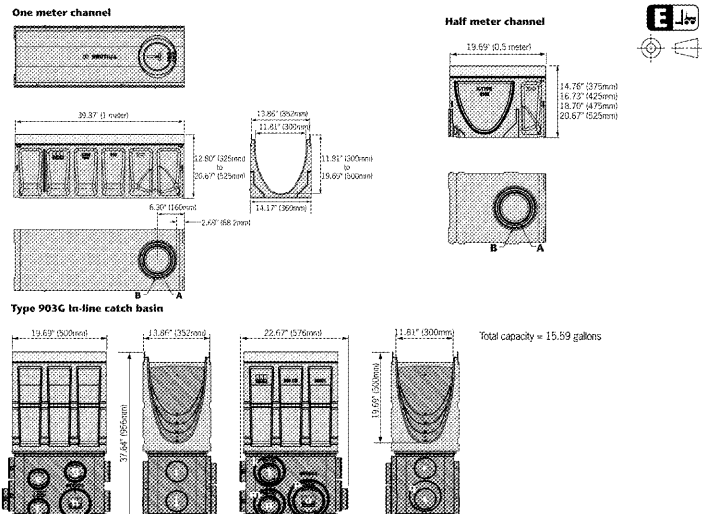


ACO DRAIN

KlassikDrain - K300 Galvanized steel edge rail channel system



Outlet flow rates

Outlet	Product	Outlet size (Sch. 40)	Invert Depth	GPM	CFS
A	Bottom outlet - K300	6" round	11.81"	421	0.94
B	Bottom outlet - K300	8" round	11.81"	748	1.67
C	Bottom outlet - K300	10" round	11.81"	1064	2.35
D	End outlet - K300	6" round	11.81"	364	0.81
E	End outlet - K300	8" round	11.81"	661	1.48
F	End outlet - K300	10" round	11.81"	958	2.15
G	Type K3-903G	4" round	29.80"	297	0.64
H	Type K3-903G	4" round	28.27"	279	0.62
I	Type K3-903G	4" round	26.74"	261	0.58
J	Type K3-903G	4" round	25.21"	243	0.54
K	Type K3-903G	4" round	23.68"	225	0.50
L	Type K3-903G	4" round	22.15"	207	0.46
M	Type K3-903G	4" round	20.62"	189	0.42
N	Type K3-903G	4" round	19.09"	171	0.38
O	Type K3-903G	4" round	17.56"	153	0.34
P	Type K3-903G	4" round	16.03"	135	0.30
Q	Type K3-903G	4" round	14.50"	117	0.26
R	Type K3-903G	4" round	12.97"	99	0.22
S	Type K3-903G	4" round	11.44"	81	0.18
T	Type K3-903G	4" round	9.91"	63	0.14

April 2018 www.ACOdrain.com

ACO DRAIN

Type 878Q Longitudinal ductile iron grate (ADA)

Product Features

- Certified to EN 1433 Load Class E - 135,000 lbs - 2,323 psi
- Uses 'QuickLok' hallow locking system
- Suitable for use with K300, K3300, H300K-13, and H300KS-13 channels and 621G, 621S, 631G, 631S catch basins
- Manufactured from ductile iron to ASTM A 536-84 - Grade 65-45-12
- E-coated for improved resistance against rust
- Complies with ADA - American Disabilities Act of 1990 Section 4.5.4
- Complies with ASME: A112.6.3 - 2001: Section 7.12
- Heel Resistant Strainers and Grates
- Bicycle Tire Penetration Resistant to AS 3996 - 2006

Specifications

General: The grate system shall be ACO Drain K300, K3300, H300K-13, and H300KS-13 channels and 621G, 621S, 631G, and 631S catch basins complete with Type 878Q Longitudinal ductile iron grate with 'QuickLok' locking system, manufactured by ACO, or similar approved.

Materials: The cover shall be manufactured from ductile iron and have minimum tensile strength of 135,000 psi.

Independently certified to meet Load Class E to EN 1433 - 135,000 lbs - 2,323 psi

Ductile iron to ASTM A 536-84 - Grade 65-45-12

Intake area of 61.85 sq. in. (399 cm²) per half meter of grate

The overall width of 1.0" (338mm) and overall length of 0.31" (8mm). Slots measure at a maximum of 1.0" (25.5mm) by 0.31" (8mm).

Installation: The trench drain system and grates shall be installed in accordance with the manufacturer's installation instructions and recommendations.

April 2018 www.ACOdrain.com

ACO DRAIN

KlassikDrain - K300 Galvanized steel edge rail channel system

Description	Part No.	Invert Depth	Weight Lbs.	Description	Part No.	Invert Depth	Weight Lbs.
K3-00 Neutral channel - 39.37" (1m)	76041	11.81"	300	K3-28 Sloped channel - 39.37" (1m)	76028	17.25"	410
K3-12 Sloped channel - 39.37" (1m)	76001	12.01"	305	K3-29 Sloped channel - 39.37" (1m)	76029	17.52"	445
K3-20 Sloped channel - 39.37" (1m)	76002	12.20"	310	K3-30 Sloped channel - 39.37" (1m)	76030	17.72"	450
K3-32 Sloped channel - 39.37" (1m)	76003	12.40"	315	K3-00 Neutral channel - 39.37" (1m)	76041	11.81"	300
K3-44 Sloped channel - 39.37" (1m)	76004	12.60"	320	K3-030 Neutral channel - 19.69" (0.5m)	76048	11.72"	450
K3-56 Sloped channel - 39.37" (1m)	76005	12.80"	325	K3-33 Sloped channel - 39.37" (1m)	76031	17.91"	455
K3-68 Sloped channel - 39.37" (1m)	76006	13.00"	330	K3-34 Sloped channel - 39.37" (1m)	76032	18.11"	460
K3-80 Sloped channel - 39.37" (1m)	76007	13.20"	335	K3-35 Sloped channel - 39.37" (1m)	76033	18.31"	465
K3-92 Sloped channel - 39.37" (1m)	76008	13.40"	340	K3-36 Sloped channel - 39.37" (1m)	76034	18.50"	470
K3-104 Sloped channel - 39.37" (1m)	76009	13.60"	345	K3-37 Sloped channel - 39.37" (1m)	76035	18.70"	475
K3-116 Sloped channel - 39.37" (1m)	76010	13.80"	350	K3-38 Sloped channel - 39.37" (1m)	76036	18.90"	480
K3-128 Sloped channel - 39.37" (1m)	76011	14.00"	355	K3-39 Sloped channel - 39.37" (1m)	76037	19.09"	485
K3-140 Sloped channel - 39.37" (1m)	76012	14.20"	360	K3-40 Sloped channel - 39.37" (1m)	76038	19.29"	490
K3-152 Sloped channel - 39.37" (1m)	76013	14.40"	365	K3-41 Sloped channel - 39.37" (1m)	76039	19.49"	495
K3-164 Sloped channel - 39.37" (1m)	76014	14.60"	370	K3-42 Sloped channel - 39.37" (1m)	76040	19.69"	500
K3-176 Sloped channel - 39.37" (1m)	76015	14.80"	375	K3-43 Sloped channel - 39.37" (1m)	76041	19.89"	505
K3-188 Sloped channel - 39.37" (1m)	76016	15.00"	380	K3-44 Sloped channel - 39.37" (1m)	76042	20.09"	510
K3-200 Sloped channel - 39.37" (1m)	76017	15.20"	385	K3-45 Sloped channel - 39.37" (1m)	76043	20.29"	515
K3-212 Sloped channel - 39.37" (1m)	76018	15.40"	390	K3-46 Sloped channel - 39.37" (1m)	76044	20.49"	520
K3-224 Sloped channel - 39.37" (1m)	76019	15.60"	395	K3-47 Sloped channel - 39.37" (1m)	76045	20.69"	525
K3-236 Sloped channel - 39.37" (1m)	76020	15.80"	400	K3-48 Sloped channel - 39.37" (1m)	76046	20.89"	530
K3-248 Sloped channel - 39.37" (1m)	76021	16.00"	405	K3-49 Sloped channel - 39.37" (1m)	76047	21.09"	535
K3-260 Sloped channel - 39.37" (1m)	76022	16.20"	410	K3-50 Sloped channel - 39.37" (1m)	76048	21.29"	540
K3-272 Sloped channel - 39.37" (1m)	76023	16.40"	415	K3-51 Sloped channel - 39.37" (1m)	76049	21.49"	545
K3-284 Sloped channel - 39.37" (1m)	76024	16.60"	420	K3-52 Sloped channel - 39.37" (1m)	76050	21.69"	550
K3-296 Sloped channel - 39.37" (1m)	76025	16.80"	425	K3-53 Sloped channel - 39.37" (1m)	76051	21.89"	555
K3-308 Sloped channel - 39.37" (1m)	76026	17.00"	430	K3-54 Sloped channel - 39.37" (1m)	76052	22.09"	560
K3-320 Sloped channel - 39.37" (1m)	76027	17.20"	435				

Notes:

- The channel offers a bottom-inclined feature of 1/8" and 1/4" for the male end; for female invert depth, subtract 5mm (0.2") from the male invert length for neutral channels, where it will be same as male invert.
- To calculate the overall channel depth add 20mm (1.0") to invert depth.
- The drain basin kit includes a polymer concrete top, removable QuickLok locking bar, trash bucket and plastic base. Select an appropriate grate.
- The catch basin kit includes a polymer concrete top, removable QuickLok locking bar, deep trash bucket, plastic riser and plastic base. Select an appropriate grate.

Specifications

General: The surface drainage system shall be ACO Drain KlassikDrain - K300 Galvanized steel edge rail channel system, manufactured by ACO, Inc. or approved equal.

Materials: The trench system bodies shall be manufactured from polymer concrete with the minimum properties as follows:

Water absorption	0.0%
Flexural strength	14,000 psi
Compressive strength	14,000 psi
Flexural strength	4,000 psi

The trench drain system shall be installed in accordance with the manufacturer's installation instructions and recommendations.

ACO, Inc.

Northeast Sales Office
9470 Pinecone Drive
Mentor, OH 44060
Tel: (440) 639-7230
Tel. Free: (800) 543-4764
Fax: (440) 639-7235

West Sales Office
825 W. Beechcroft St.
Casa Grande, AZ 85122
Tel: (520) 421-9988
Tel. Free: (800) 490-9552
Fax: (520) 421-9699

Southeast Sales Office
4211 Pleasant Road
Fort Mill, SC 29708
Tel: (803) 543-7664
Tel. Free: (800) 543-4764
Fax: (803) 802-1063

Electronic Contact:
info@ACOdrain.com
www.ACOdrain.com

ACO DRAIN

Type 878Q Longitudinal ductile iron grate (ADA)

Plan view

Side elevation

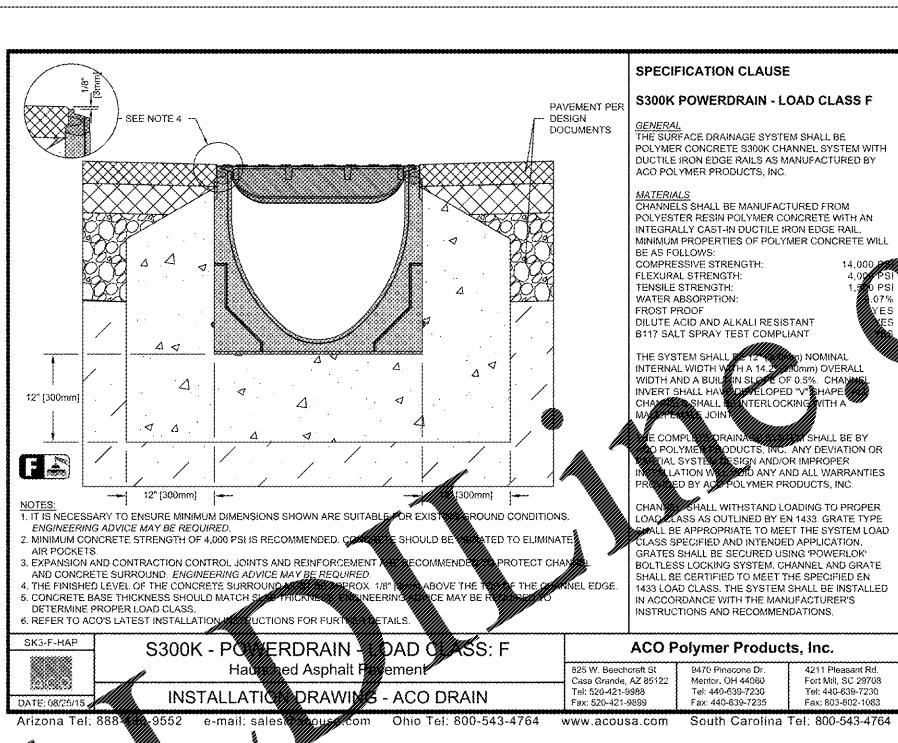
Description	Part No.	Length inches (mm)	Width inches (mm)	Weight Lbs.
QuickLok locking bar	138130	19.69 (500)	13.31 (338)	53.0
Type 878Q Ductile iron longitudinal grate	10458	-	-	0.5
QuickLok locking bar (stake and stud)	01318	-	-	0.5

'QuickLok' locking mechanism

ACO 'QuickLok' is a patented hallow locking system, grates are removed and replaced with the minimum time and effort for ease of maintenance. The unique design provides a positive 'snap down' fit into the locking bar. A stud is fixed to the grate which 'locks' into the spring clip in the locking bar.

The 'QuickLok' stud is made from stainless steel and high density nylon. The locking bar and clip are stainless steel, for use in both general purpose and corrosive environments.

April 2018 www.ACOdrain.com



S300K - POWERDRAIN - LOAD CLASS F

ACO Polymer Products, Inc.

825 W. Beechcroft St. Casa Grande, AZ 85122
Tel: 520-421-9988 Fax: 520-421-9699

9470 Pinecone Dr. Mentor, OH 44060
Tel: 440-639-7230 Fax: 440-639-7235

4211 Pleasant Rd. Fort Mill, SC 29708
Tel: 803-543-7664 Fax: 803-802-1063

Arizona Tel: 888-494-9552 e-mail: sales@acousa.com Ohio Tel: 800-543-4764 www.acousa.com South Carolina Tel: 800-543-4764

April 2018 www.ACOdrain.com

georgia civil

CIVIL ENGINEERING
LANDSCAPE ARCHITECTURE
LAND SURVEYING

311 N. Main St., Unit C, Suite 101
P.O. Box 868 | Madison, GA 30650
P: 706.342.1194 | F: 706.342.1105
www.georgiacivil.com

Professional Seal

GINN CDR&J

0025-041, 0025-042, PORTION OF 0025-042B
ACCESS ROAD - FAIRVIEW ROAD INTERSECTION
COVINGTON, GA
NEWTON COUNTY
CG-GENERAL COMMERCIAL (NEWTON COUNTY)

DRAWING DATE: 2/15/2019

DRAWN BY: SPO

CHECKED BY: SPO

REVISIONS

DATE	DESCRIPTION

© Copyright 2016 georgia civil, inc.
This document and its reproduction are the property of Georgia Civil, Inc. and may not be reproduced, published, or used in whole or in part without the written consent of Georgia Civil, Inc.

Sheet Title

STORM WATER MANAGEMENT SYSTEM DETAILS

Sheet Number

C-4.8