



REVISIONS
 02.22.2019
 GENERAL REVISIONS

ELLSWORTH ARCHITECTS
 3136 LANIER DRIVE
 ATLANTA, GEORGIA 30319
 PHONE: 404.949.9351

PRO BUILDING SYSTEMS
 DESIGN BUILD CONTRACTORS
 3678 North Peachtree Road
 Atlanta, Georgia 30341
 (770) 455-1791 / Fax 455-4123
 www.probdgsystems.com

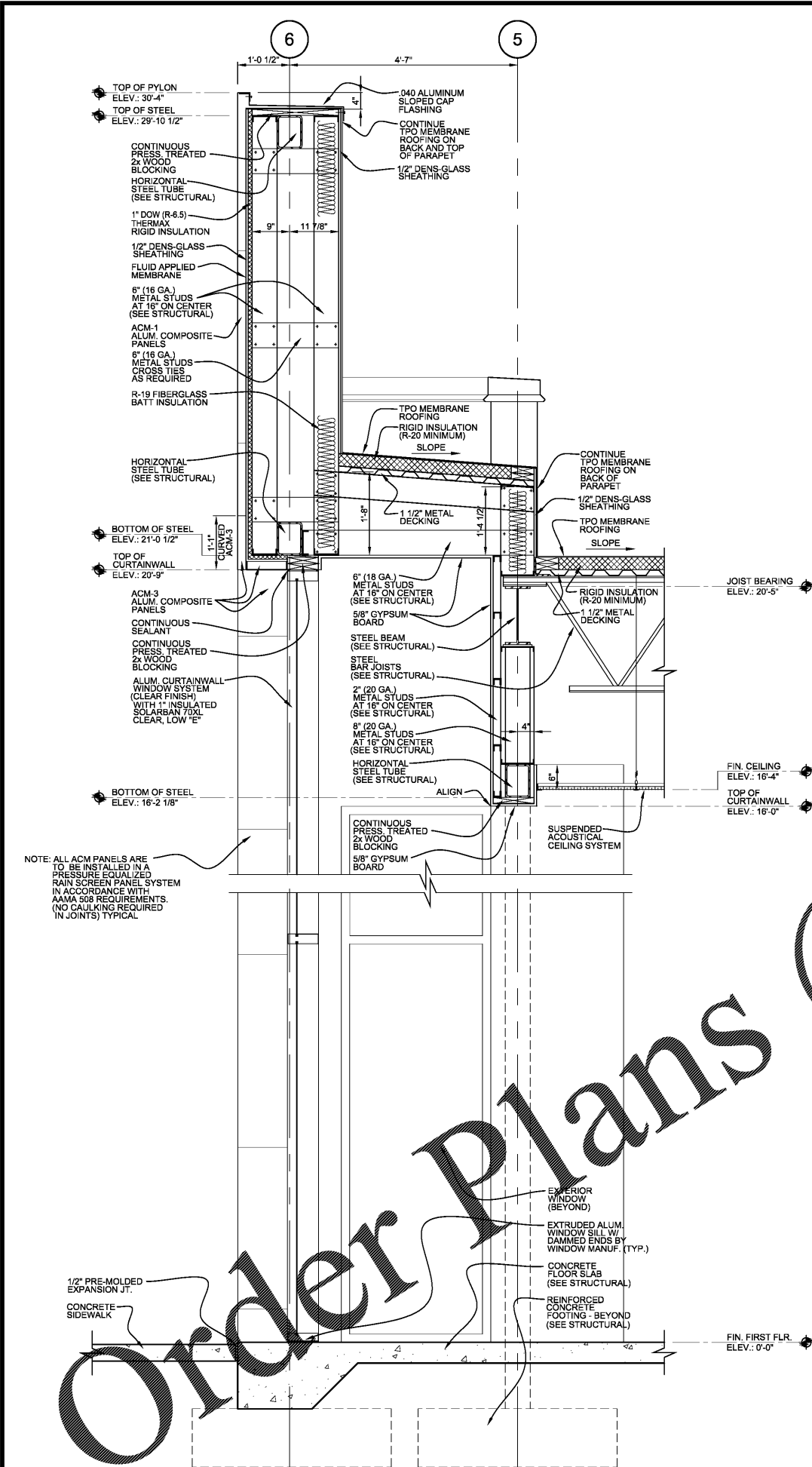
GINN CHRYSLER - DODGE - RAM AND JEEP
 1-20 ACCESS ROAD
 COVINGTON GEORGIA 30040

DATE: 09.26.2018
 SCALE: 3/4"=1'-0"
 BY: RJE
 JOB ID: 18YGIN001

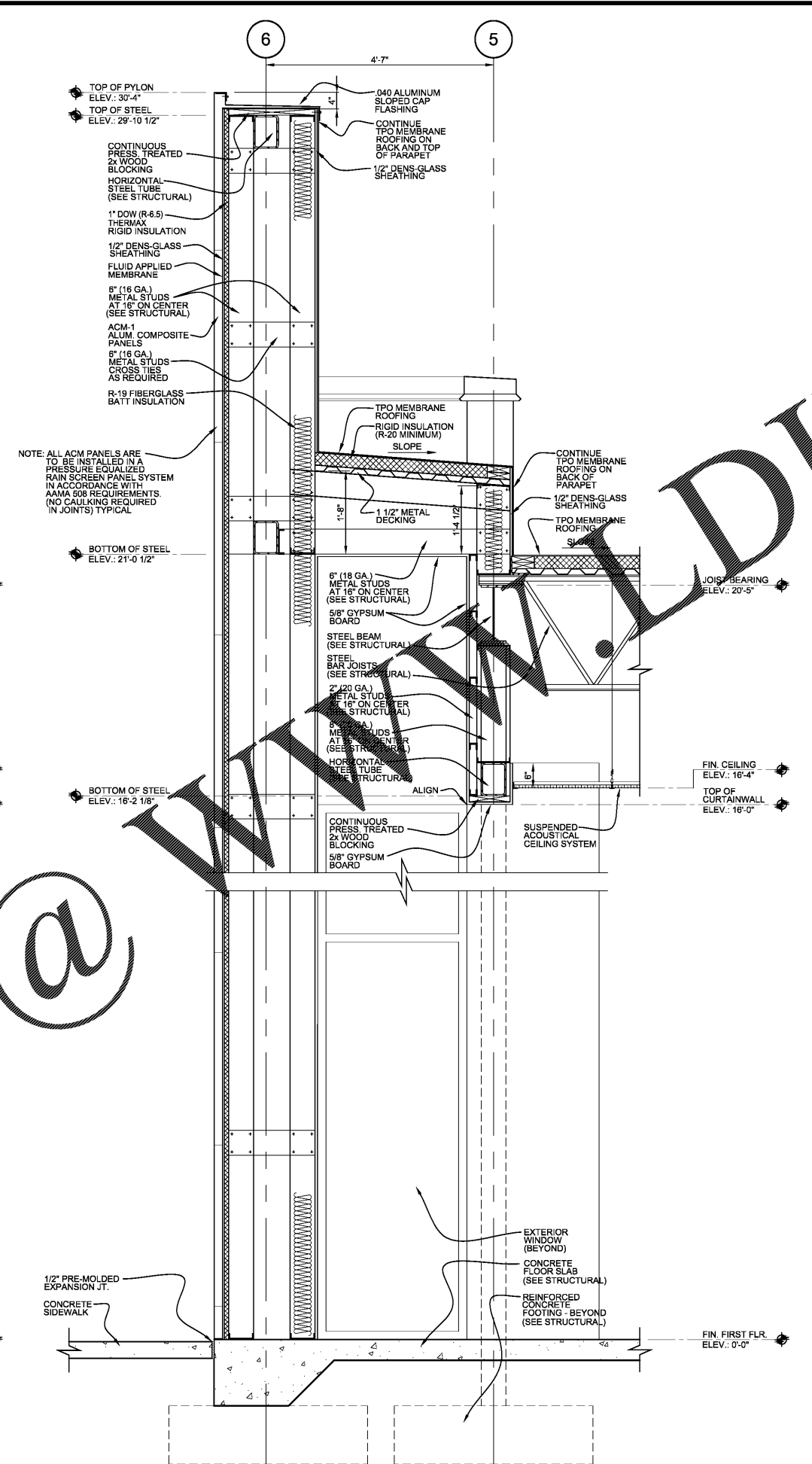
EXTERIOR WALL SECTIONS
 DRAWING TITLE

A6.6

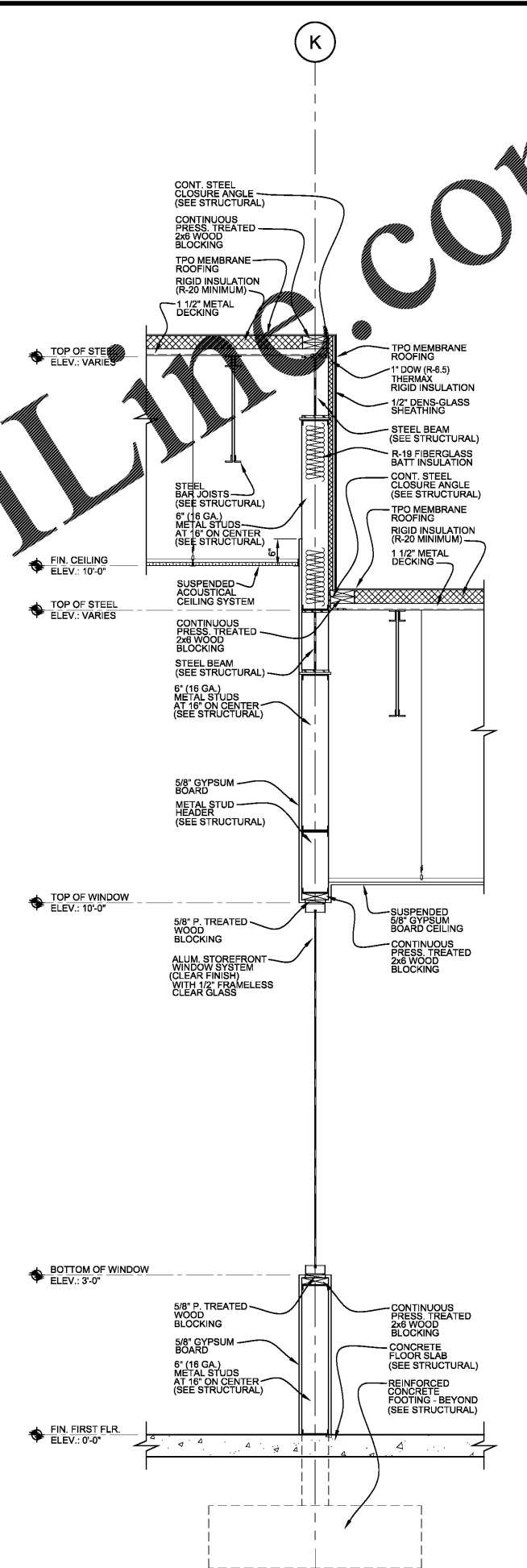
SHEET 24 OF 33



1 EXTERIOR WALL SECTION
 A6.6 3/4"=1'-0"



2 EXTERIOR WALL SECTION
 A6.6 3/4"=1'-0"



3 EXTERIOR WALL SECTION
 A6.6 3/4"=1'-0"

Order Plans @

WWW.WALDILLINC.COM

NOTE: ALL ACM PANELS ARE TO BE INSTALLED IN A PRESSURE EQUALIZED RAIN SCREEN PANEL SYSTEM IN ACCORDANCE WITH AAMA 508 REQUIREMENTS. (NO CAULKING REQUIRED IN JOINTS) TYPICAL

NOTE: ALL ACM PANELS ARE TO BE INSTALLED IN A PRESSURE EQUALIZED RAIN SCREEN PANEL SYSTEM IN ACCORDANCE WITH AAMA 508 REQUIREMENTS. (NO CAULKING REQUIRED IN JOINTS) TYPICAL