



REVISION	DATE
1	02.22.2019
GENERAL REVISIONS	

**ELLSWORTH ARCHITECTS**  
 3136 LANIER DRIVE  
 ATLANTA, GEORGIA 30319  
 PHONE: 404.949.9351

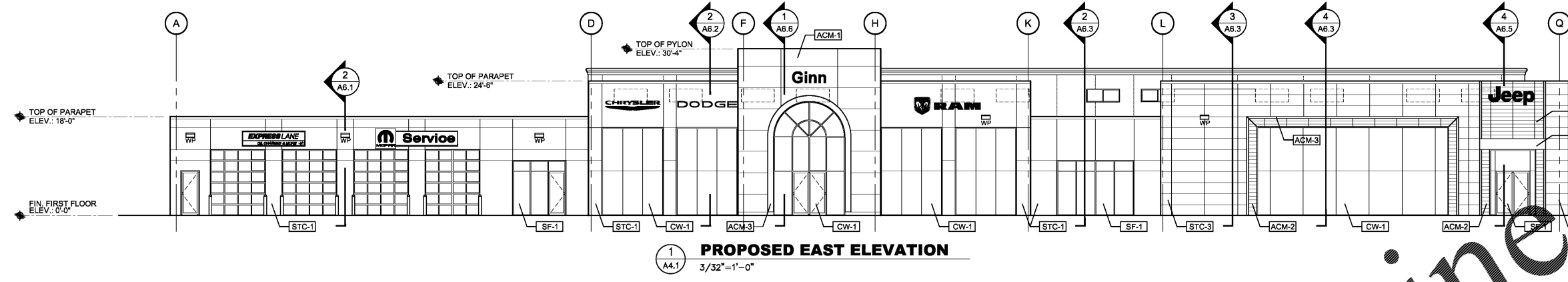
**PRO BUILDING SYSTEMS**  
 DESIGN BUILD CONTRACTORS  
 3878 North Peachtree Road  
 Atlanta, Georgia 30341  
 (770) 455-1781 / Fax 455-4123  
 www.probuildingsystems.com

**GINN CHRYSLER - DODGE - RAM AND JEEP**  
 1-20 ACCESS ROAD  
 COVINGTON GEORGIA 30040

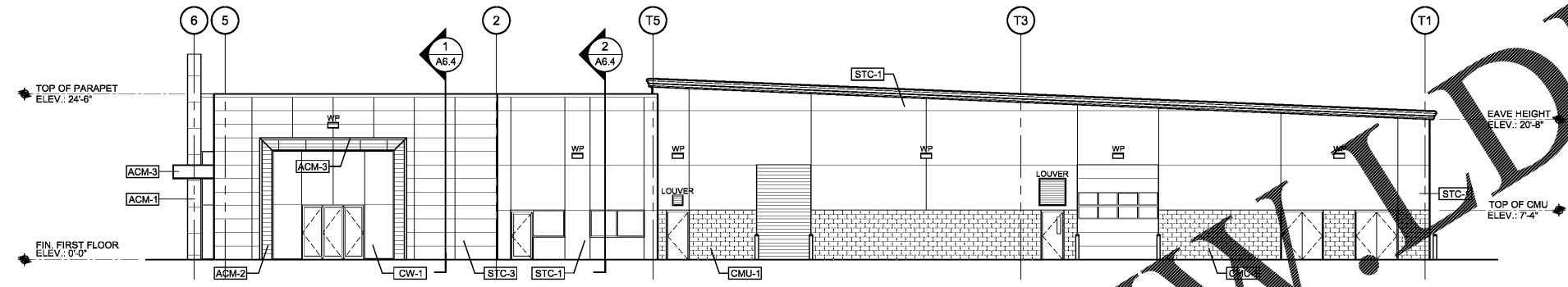
DATE: 09.26.2018  
 SCALE: 3/32"=1'-0"  
 BY: RJE  
 JOB ID: 18YGIN001

PROPOSED EXTERIOR ELEVATIONS  
 DRAWING TITLE

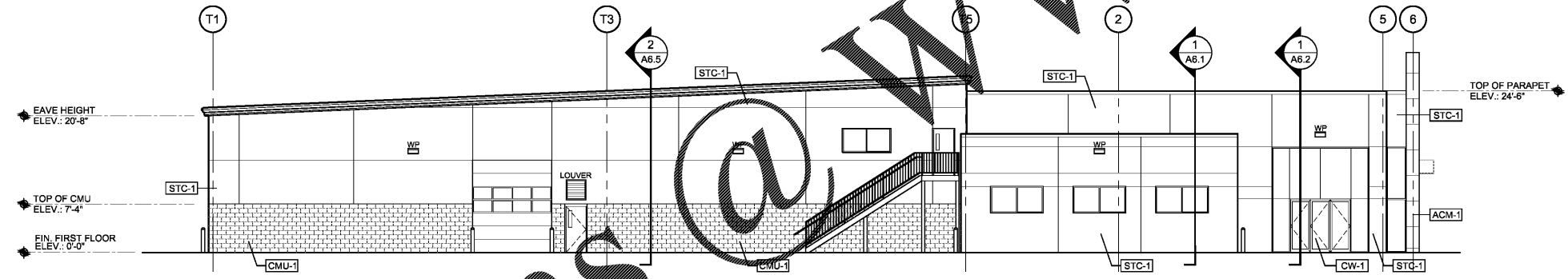
**A4.1**



**1 PROPOSED EAST ELEVATION**  
 3/32"=1'-0"

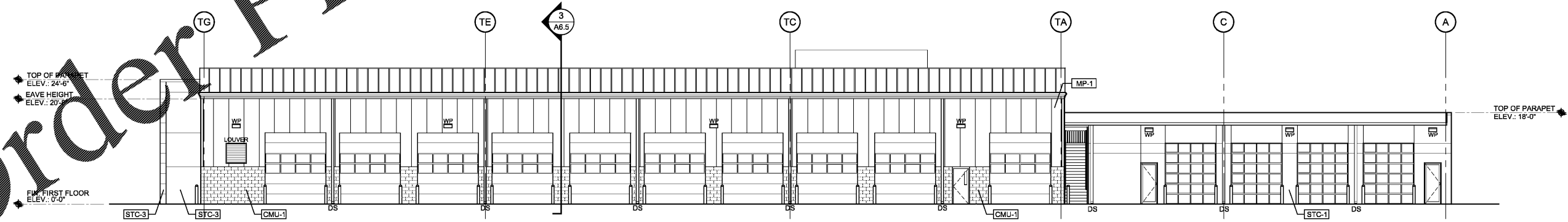


**2 PROPOSED NORTH ELEVATION**  
 3/32"=1'-0"



**3 PROPOSED SOUTH ELEVATION**  
 3/32"=1'-0"

EXTERIOR MATERIAL LEGEND			
MARK	MATERIAL	MANUFACTURER	COLOR / FINISH
ACM-1	ALUMINUM COMPOSITE METAL PANELS	ALPOLIC	SILVER METALLIC
ACM-2	ALUMINUM COMPOSITE METAL PANELS	ALPOLIC	HARVEST TRAIL BAMBOO FINISH
ACM-3	ALUMINUM COMPOSITE METAL PANELS	ALPOLIC	HIGH POLISHED ALUMINUM
STC-1	HARD-COAT STUCCO	DRYVIT	COLOR: TO MATCH BENJAMIN MOORE PELICAN GRAY FINISH TEXTURE: MEDIUM SAND
STC-3	HARD-COAT STUCCO	DRYVIT	COLOR: ANTHRACITE GREY
CMU-1	8" SPLIT-FACE CMU		PAINT - PELICAN GRAY 1612 (FLAT) BY BENJAMIN MOORE PAINT
CW-1	CURTAIN WALL SYSTEM	KAWNEER OR EQUAL	STRUCTURAL SILICON GLAZED KAWNEER 1600 CURTAIN WALL SYSTEM (CLEAR ANODIZED) WITH 1" LOW "E" INSULATED GLASS (CLEAR)
SF-1	ALUMINUM STOREFRONT	KAWNEER OR EQUAL	ALUM. STOREFRONT SYSTEM (CLEAR ANODIZED) W/ 1" LOW "E" INSULATED GLASS (CLEAR)
MP-1	METAL PANELS	PRE-ENG. BUILDING SUPPLIER	COLOR TO MATCH SHERWIN WILLIAMS CITYSCAPE - SATIN



**4 PROPOSED WEST ELEVATION**  
 3/32"=1'-0"

Order Plans @ [www.DIline.com](http://www.DIline.com)