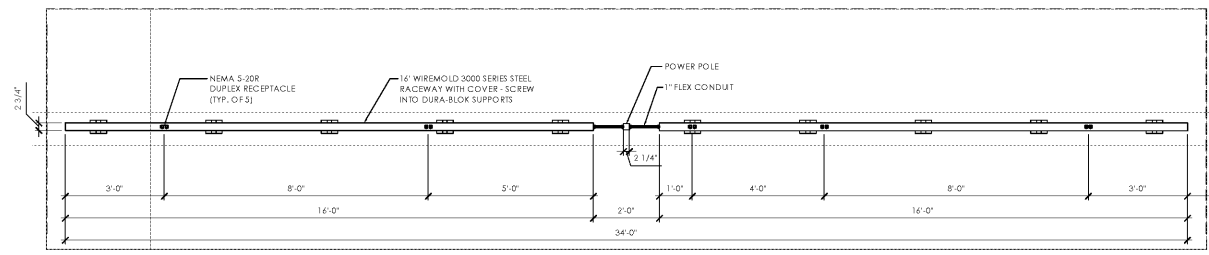
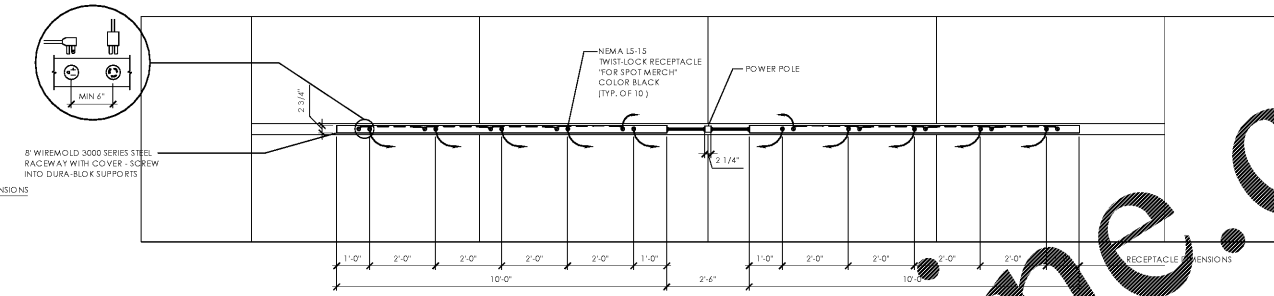


Issued:		Date:
A	Client Review Set	02/15/19
B	Bid Set	03/08/19
C		
D		
Revisions:		Date:
1		
2		
3		
4		
5		
6		
7		
8		

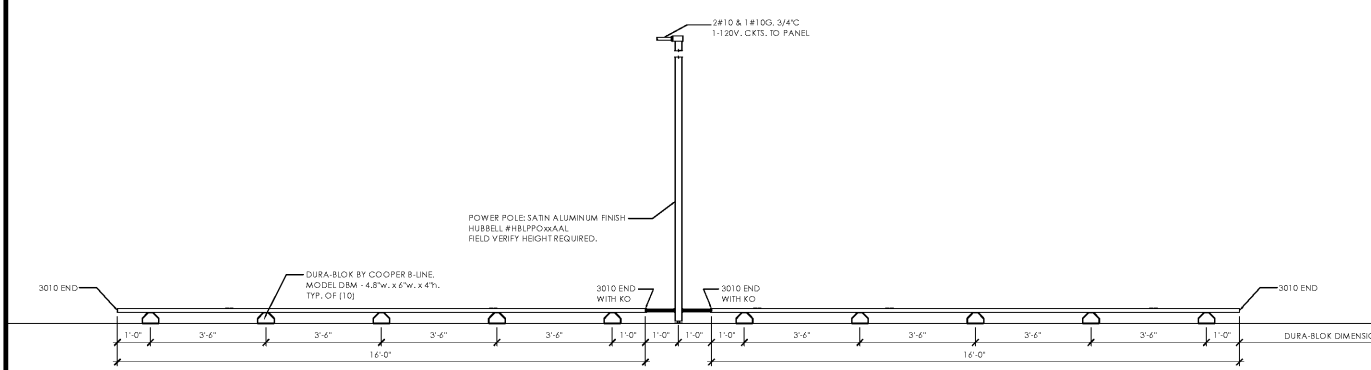


D3 Gondola Lighting Raceway Detail
SCALE: N.T.S.

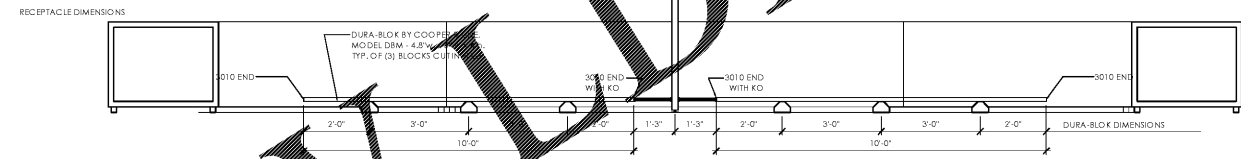


B3 Spot Merchandiser Raceway Detail
SCALE: N.T.S.

NOTE:
CONTRACTOR SHALL FIELD VERIFY
RECEPTACLE TYPE REQUIRED FOR SPOT
MERCHANTISER UNIT.

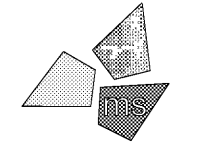


D1 Utility Area Elevation
SCALE: N.T.S.



C1 Utility Area Elevation
SCALE: N.T.S.

DO NOT SCALE PLANS
Copying, Printing, Software and other processes required to produce these prints can stretch or shrink the actual paper or layout. Therefore, scaling of this drawing may be inaccurate. Contact us consultants with any need for additional dimensions or clarifications.



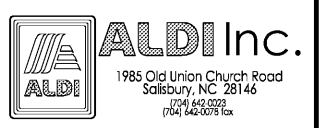
ms consultants, inc.
engineers, architects, planners
920 Main Campus Drive
Suite 430
Raleigh, NC 27606-5213
(919)-772-5565
fax: (919)-779-2308

DRAWN BY: JMM

REVIEWED BY: KFF

Seal

ENGINEER FIRM LICENSE #C-3239
PROFESSIONAL OF RECORD:
DANIEL E. DOWLER No. 042448
EXP. DATE: 12/31/2019



ALDI Inc. Store #: 59
Cary, NC
1315 Kildaire Farm Rd
Cary, NC 27511
Wake County
Project Name & Location:

Electrical Details	
Drawing Name:	
Prototype Rls.	Project No.
	40452-25
Type: v7.1	
	E-502
Scale: As Noted	Drawing No.

Plot Date: 3/7/2019

Order Plans @