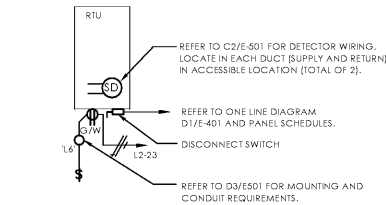


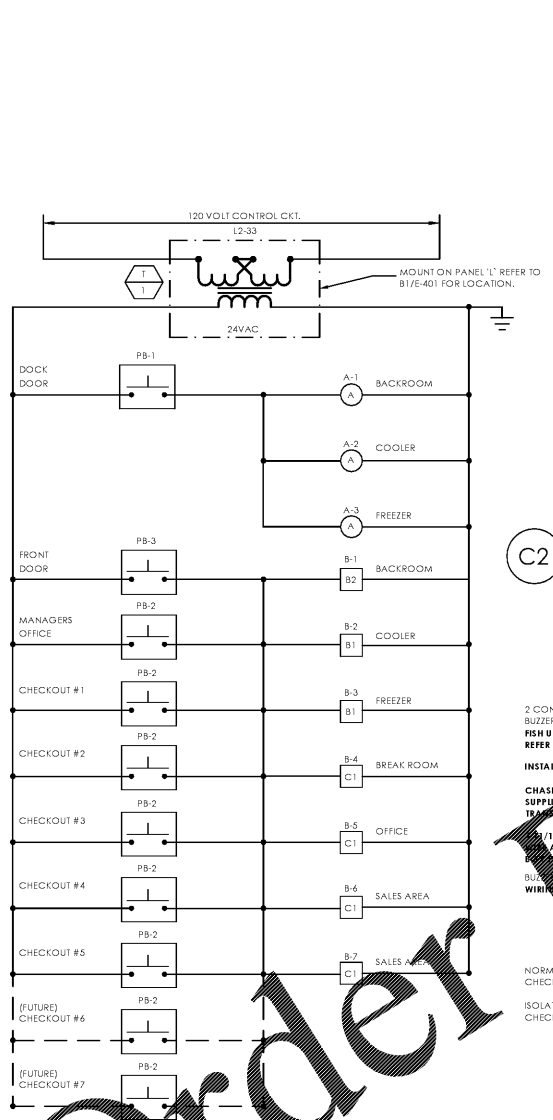
NOTES:  
1. REFER TO DETAIL C3/E-501 AND C2/E-501 FOR WIRING.

**D3** RTU Service Light Mounting Detail  
SCALE: N.T.S.



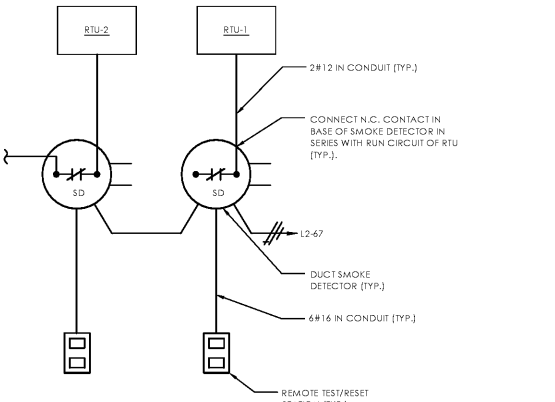
NOTES:  
1. COORDINATE LOCATION OF DISCONNECT WITH MECHANICAL CONTRACTOR. ROUTE CONDUIT THRU ROOF. SEAL ROOF PENETRATION WATER/TIGHT USING METHOD APPROVED BY ROOFING MANUFACTURER. DO NOT PENETRATE DRAIN PAN WITH CONDUITS.  
2. REFER TO SHEET E-201 FOR LOCATION.

**C3** Typical RTU Detail  
SCALE: N.T.S.



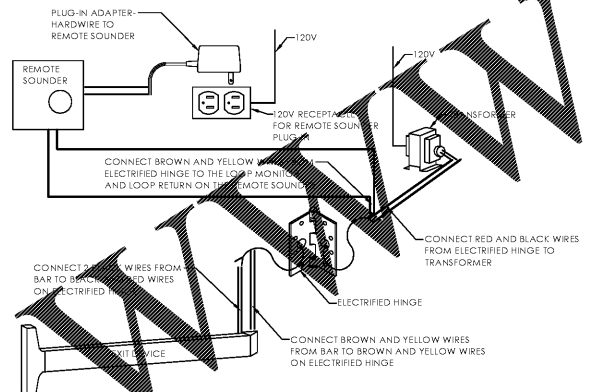
PB-2 FURNISHED BY OTHERS (CHECKOUTS) (TYP. AT CHECKOUTS)  
NOTES:  
1. ALL LOW VOLTAGE CONDUITORS SHALL BE MINIMUM 18 GAUGE AND U.L. RATED FOR USE IN AIR HANDLING FLENUMS. WIRING SHALL BE IN CONDUIT WHERE EXPOSED IN BACK ROOM AND SALES AREA.

**D1** Bell and Buzzer Wiring Diagram  
SCALE: N.T.S.

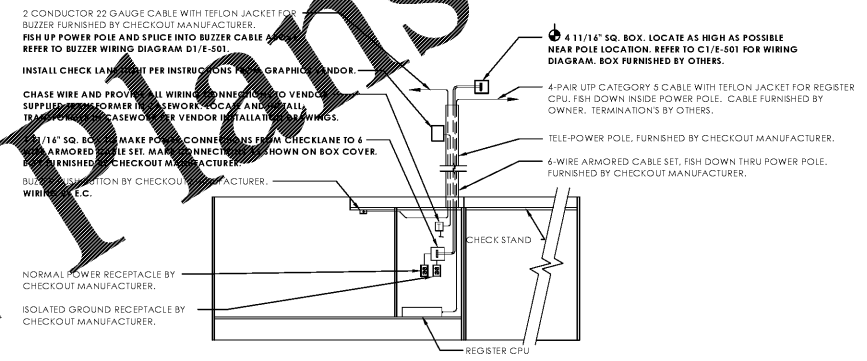


NOTES:  
1. REFER TO DETAIL C3/E-501 FOR LOCATION OF SMOKE DETECTORS.  
2. REFER TO DETAIL B1/E-401 FOR LOCATION OF REMOTE TEST STATIONS.  
3. SMOKE DETECTORS FURNISHED AND INSTALLED BY M.C. ALL WIRING BY E.C.

**C2** Duct Smoke Detector Wiring Detail  
SCALE:

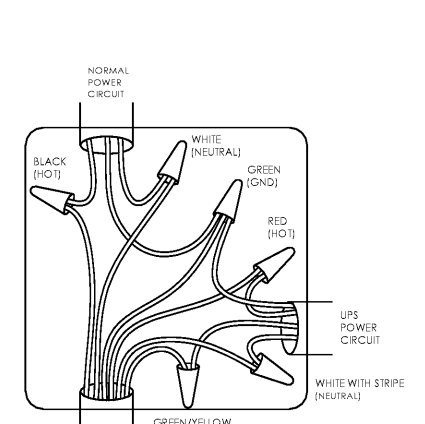


**B2** Exit Device/Remote Sounder Detail  
SCALE:

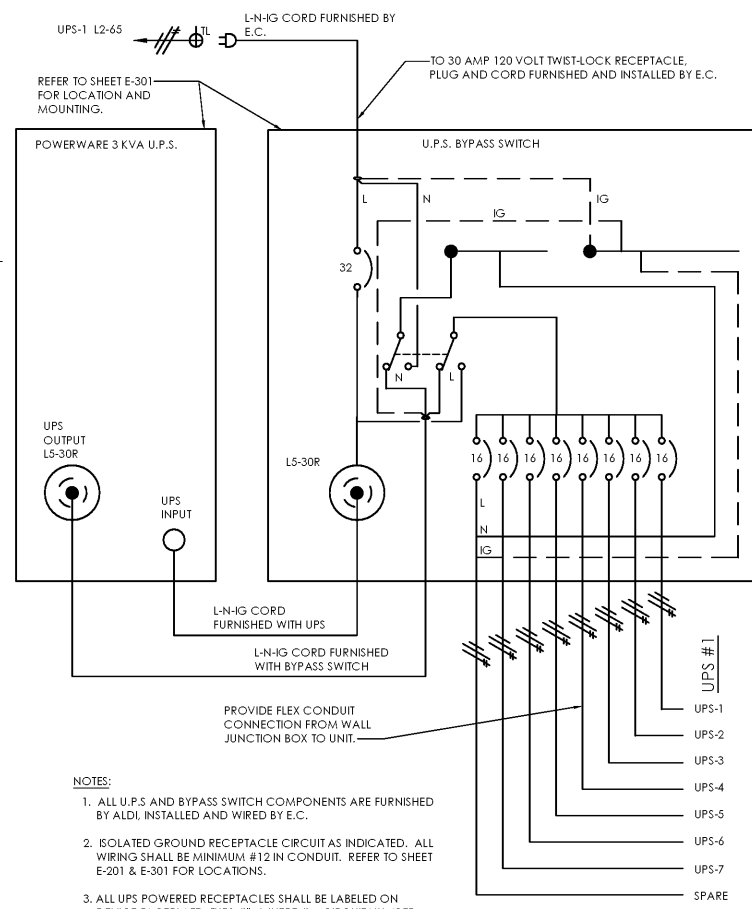


NOTES:  
1. **BOLD PRINT TEXT** IN DETAIL INDICATES WORK BY THE ELECTRICAL CONTRACTOR. LIGHT PRINT TEXT IN DETAIL INDICATES WORK BY OTHERS.  
2. **ALL CONDUITS TO CHECKOUTS SHALL BE RUN AS HIGH AS POSSIBLE. COMBINE POWER CIRCUITS IN COMMON CONDUIT. PROVIDE DEDICATED 2\"/>**

**C1** Checkout Wiring Detail  
SCALE: N.T.S.



**B1** Checkout Wiring Diagram  
SCALE: N.T.S.



NOTES:  
1. ALL U.P.S. AND BYPASS SWITCH COMPONENTS ARE FURNISHED BY ALDI. INSTALLED AND WIRED BY E.C.  
2. ISOLATED GROUND RECEPTACLE CIRCUIT AS INDICATED. ALL WIRING SHALL BE MINIMUM #12 IN CONDUIT. REFER TO SHEET E-201 & E-301 FOR LOCATIONS.  
3. ALL UPS POWERED RECEPTACLES SHALL BE LABELED ON DEVICE FACEPLATE "UPS-#" WHERE # = CIRCUIT NUMBER.

**A1** UPS Wiring Diagram  
SCALE: N.T.S.

Issued:		Date:	
A	Client Review Set		02/15/19
B	Bid Set		03/08/19
C			
D			
Revisions:		Date:	
1			
2			
3			
4			
5			
6			
7			
8			

**DO NOT SCALE PLANS**  
Copying, Printing, Software and other processes required to produce these prints can stretch or shrink the actual paper or layout. Therefore, scaling of this drawing may be inaccurate. Contact us consultants with any need for additional dimensions or clarifications.

**ms consultants, inc.**  
engineers, architects, planners  
920 Main Campus Drive  
Suite 430  
Raleigh, NC 27606-5213  
(919)-772-5565  
fax: (919)-779-2308

DRAWN BY: JMM

REVIEWED BY: KFF

Seal

ENGINEER FIRM LICENSE #C-3239  
PROFESSIONAL OF RECORD:  
DANIEL E. DOWLER No. 042448  
EXP. DATE: 12/31/2019

**ALDI Inc.**  
1985 Old Union Church Road  
Salisbury, NC 28146  
(704) 642-0023  
(704) 642-0079 fax

ALDI Inc. Store #: 59  
Cary, NC  
1315 Kildaire Farm Rd  
Cary, NC 27511  
Wake County  
Project Name & Location:

Electrical  
Details  
Drawing Name:  
Prototype Rls. Project No.  
Type: v7.1 40452-25

Scale: As Noted Drawing No. E-501