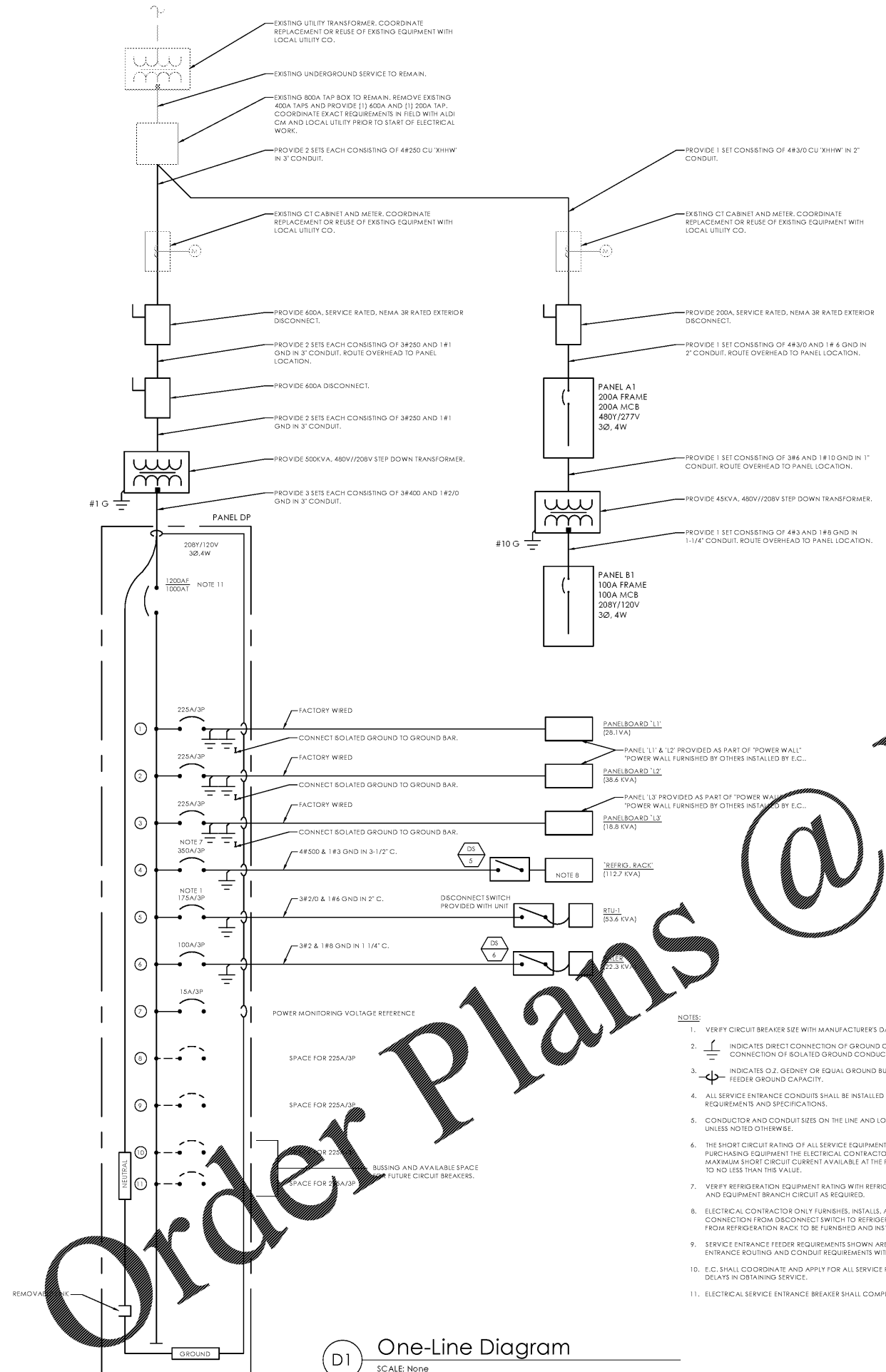


WWW.LDILine.com



Refrigeration Scope of Work:

E.C. SHALL PERFORM THE WIRING OF ALL REFRIGERATION EQUIPMENT PER THE REFRIGERATION DRAWINGS. REFRIGERATION DRAWINGS WILL BE PROVIDED BY THE REFRIGERATION CONTRACTOR UNDER SEPARATE COVER. FOR THE PURPOSES OF BIDDING, THE ELECTRICAL CONTRACTOR SHALL INCLUDE ALL MATERIALS AND LABOR FOR THE FOLLOWING TASKS:

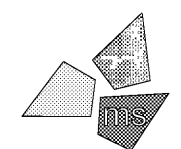
1. INSTALLATION OF ALL LIGHT FIXTURES WITHIN COOLER AND FREEZER.
2. WIRING OF ALL FRAME HEATERS AND DOOR LIGHTS.
3. WIRING OF ANY HEAT TAPE AND THRESHOLD HEATER.
4. ALL WIRING ASSOCIATED WITH REFRIGERATION RACK.
5. WIRING FOR MDU'S IN SALES AREA.
6. WIRING OF ALL REFRIGERATION SYSTEM REMOTE PANELS.
7. WIRING OF THE VAC SYSTEM COMPONENTS.

***NOTE: THIS IS NOT AN EXHAUSTIVE LIST. THE REFRIGERATION CONTRACTOR IS RESPONSIBLE FOR OBTAINING THE REFRIGERATION DRAWINGS AND PERFORMING ALL WORK NECESSARY FOR THE SYSTEM TO FUNCTION PROPERLY.

Issued:		Date:
A	Client Review Set	02/15/19
B	Bid Set	03/08/19
C		
D		
Revisions:		Date:
1		
2		
3		
4		
5		
6		
7		
8		

DO NOT SCALE PLANS

Copying, Printing, Software and other processes required to produce these prints can stretch or shrink the actual paper or layout. Therefore, scaling of this drawing may be inaccurate. Contact us consultants with any need for additional dimensions or clarifications.



ms consultants, inc.
engineers, architects, planners
920 Main Campus Drive
Suite 430
Raleigh, NC 27606-5213
(919)-772-5565
fax: (919)-779-2308

DRAWN BY: JMM

REVIEWED BY: KFF

Seal

ENGINEER FIRM LICENSE #C-3239
PROFESSIONAL OF RECORD:
DANIEL E. DOWLER No. 042448
EXP. DATE: 12/31/2019



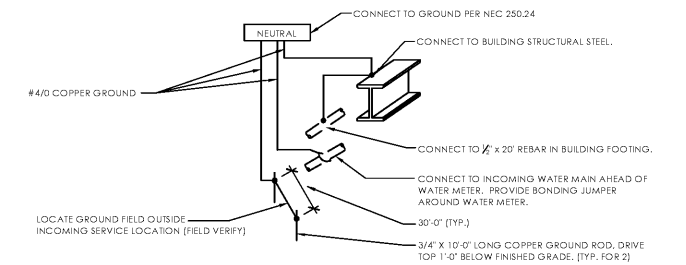
ALDI Inc. Store #: 59
Cary, NC
1315 Kildaire Farm Rd
Cary, NC 27511
Wake County
Project Name & Location:

One-Line Diagram,
Schedules & Elevs.
Drawing Name:

Prototype Rls.	Project No.
	40452-25

Type: v7.1

Scale: As Noted



A1 Service Entrance Grounding Detail
SCALE: None

- NOTES:
1. VERIFY CIRCUIT BREAKER SIZE WITH MANUFACTURER'S DATA RECOMMENDATIONS. BREAKER SHALL BE HACR RATED.
 2. INDICATES DIRECT CONNECTION OF GROUND CONDUCTOR TO GROUND BUS. SUBSCRIPT 'I' INDICATES DIRECT CONNECTION OF ISOLATED GROUND CONDUCTOR TO ISOLATED GROUND BUS.
 3. INDICATES O.Z. GEDNEY OR EQUAL GROUND BUSHING BONDED TO GROUND BUS WITH CONDUCTOR SIZED TO MAXIMUM FEEDER GROUND CAPACITY.
 4. ALL SERVICE ENTRANCE CONDUITS SHALL BE INSTALLED IN ACCORDANCE WITH UTILITY COMPANY REQUIREMENTS, NEC REQUIREMENTS AND SPECIFICATIONS.
 5. CONDUCTOR AND CONDUIT SIZES ON THE LINE AND LOAD SIDES OF ALL NON-FUSIBLE DISCONNECT SWITCHES SHALL BE IDENTICAL UNLESS NOTED OTHERWISE.
 6. THE SHORT CIRCUIT RATING OF ALL SERVICE EQUIPMENT AND PANEL BOARDS SHALL BE NOT LESS THAN 65,000 AIC, BEFORE PURCHASING EQUIPMENT THE ELECTRICAL CONTRACTOR SHALL CONTACT THE POWER CO. AND OBTAIN IN WRITING THE MAXIMUM SHORT CIRCUIT CURRENT AVAILABLE AT THE POINT OF SERVICE. ALL EQUIPMENT SHALL BE RATED AND COORDINATED TO NO LESS THAN THIS VALUE.
 7. VERIFY REFRIGERATION EQUIPMENT RATING WITH REFRIGERATION CONTRACTOR; MODIFY ASSOCIATED CIRCUIT BREAKER RATING AND EQUIPMENT BRANCH CIRCUIT AS REQUIRED.
 8. ELECTRICAL CONTRACTOR ONLY FURNISHES, INSTALLS, AND TERMINATES THE FEEDER FROM DP1 TO DISCONNECT SWITCH. CONNECTION FROM DISCONNECT SWITCH TO REFRIGERATION EQUIPMENT BY REFRIGERATION INSTALLER. ALL BRANCH WIRING FROM REFRIGERATION RACK TO BE FURNISHED AND INSTALLED BY REFRIGERATION INSTALLER.
 9. SERVICE ENTRANCE FEEDER REQUIREMENTS SHOWN ARE MINIMUM REQUIREMENTS. E.C. SHALL FULLY COORDINATE SERVICE ENTRANCE ROUTING AND CONDUIT REQUIREMENTS WITH UTILITY COMPANY PRIOR TO BID.
 10. E.C. SHALL COORDINATE AND APPLY FOR ALL SERVICE REQUESTS FROM UTILITY COMPANY AS EARLY AS POSSIBLE TO AVOID DELAYS IN OBTAINING SERVICE.
 11. ELECTRICAL SERVICE ENTRANCE BREAKER SHALL COMPLY WITH NEC 240.87 FOR ARC ENERGY REDUCTION.

D1 One-Line Diagram
SCALE: None