

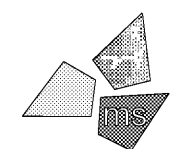
ENLARGED PLAN KEYNOTES

- (E1) EXISTING ELECTRICAL SERVICE ENTRANCE TO REMAIN. EXISTING SERVICE DISCONNECTS TO BE REPLACED. PROVIDE (1) 600A AND (1) 200A SERVICE RATED DISCONNECTS ON EXTERIOR OF BUILDING. REFER TO ONE-LINE DIAGRAM D1/E-401. FULLY COORDINATE METERING AND CONDUIT REQUIREMENTS WITH UTILITY COMPANY PRIOR TO BID.
- (E2) ELECTRICAL CONTRACTOR SHALL PROVIDE 3" MINIMUM PVC CONDUIT UNDERGROUND FOR TELEPHONE. EXTEND RGS CONDUIT A MINIMUM OF 10'-0" HORIZONTAL FROM BUILDING. VERIFY LOCATION AND EXACT REQUIREMENTS WITH TELEPHONE COMPANY. EXTEND CONDUIT 6" ABOVE PALLET CURB AND INSTALL INSULATED BUSHING. BOND TO GROUND BAR IN (DP/1) WITH 1#6 BARE COPPER GROUND. COORDINATE REUSE OF EXISTING TELECOM SERVICE ENTRANCE IN FIELD.
- (E3) REFER TO A1/E-501 FOR WIRING DIAGRAM FOR (UPS/1) SYSTEM BYPASS. (UPS/1) AND SYSTEM BYPASS TO BE MOUNTED ON THE SHELF. SHELF BY G.C. COORDINATE TWIST LOCK RECEPTACLE LOCATION WITH SHELF AND UNIT. VERIFY EXACT LOCATION WITH ALDI REPRESENTATIVE. G.C. SHALL COORDINATE UPS SYSTEM TEST WITH ALDI REPRESENTATIVE AT TIME OF PUNCH LIST.
- (E4) LOCATE TWO RECEPTACLES SPACED ON CENTER AT 9'-0" R.F.F. AND TWO RECEPTACLES SPACED ON CENTER 9'-0" FOR SECURITY SYSTEM POWER PACKS. COORDINATE LOCATION WITH SECURITY SYSTEM INSTALLER PRIOR TO ROUGH-IN.
- (E5) CHIME SHALL BE SURFACE MOUNTED AT LOCATION INDICATED PER MANUFACTURER'S RECOMMENDATIONS. REFER TO D1/E-501 FOR AND E-501 WIRING DIAGRAM AND E-001 FOR MATERIALS LIST.
- (E6) RECEPTACLES TO BE INSTALLED ABOVE COUNTER IN BREAK ROOM. REFER TO ARCHITECTURAL INTERIOR ELEVATIONS. FIELD VERIFY WITH LOCATION OF COUNTER PRIOR TO ROUGH-IN.
- (E7) WIRE THROUGH CIRCUIT BREAKER IN (UPS/1) WITH MINIMUM #12 CONDUCTORS IN CONDUIT. REFER TO A1/E-501 FOR WIRING DIAGRAM. ALL UPS POWERED RECEPTACLES SHALL BE LABELED ON DEVICE FACEPLATE "UPS-#" WHERE # = CIRCUIT NUMBER.
- (E8) PROVIDE DUPLEX RECEPTACLE AND SINGLE GANG JUNCTION BOX WITH 3/4" CONDUIT TO ABOVE CEILING FOR TIME CLOCK. RECEPTACLE AND JUNCTION BOX SHALL BE MOUNTED IN FLAT PANEL CONNECTION ENCLOSURE HUBBELL #NSAV62M WITH #NSAV6C COVER. REFER TO ARCHITECTURAL INTERIOR ELEVATIONS FOR LOCATION.
- (E9) FACILITY STATUS DISPLAY. PROVIDE 3/4" CONDUIT TO ABOVE CEILING FOR COMM. WIRING.
- (E10) RECEPTACLES TO BE INSTALLED ABOVE COUNTER IN OFFICE. REFER TO ARCHITECTURAL INTERIOR ELEVATIONS. FIELD VERIFY WITH LOCATION OF COUNTER PRIOR TO ROUGH-IN.
- (E11) JUNCTION BOX AND RECEPTACLE LOCATION IN IT RACK ALCOVE SHALL LOCATED SO THAT THEY ARE NOT OBSTRUCTED BY RACK FRAMING AND BRACING. REFER TO ARCHITECTURAL INTERIOR ELEVATIONS FOR COORDINATION. COMPUTER/SCANNER CABLES AND INSTALLATION SHALL BE BY OTHERS.
- (E12) PROVIDE 10"x10"x4" RECESSED BOX WITH (3) THREE 2" CONDUITS TO ABOVE CEILING. REFER TO ARCHITECTURAL INTERIOR ELEVATIONS FOR BOX AND RECEPTACLE LOCATIONS.
- (E13) PROVIDE SINGLE GANG BOX AND 3/4" CONDUIT TO ABOVE CEILING FOR CABLING. REFER TO ARCHITECTURAL INTERIOR ELEVATIONS.
- (E14) REFER TO ARCHITECTURAL INTERIOR ELEVATIONS FOR COORDINATION OF COMPUTER OUTLET AND RECEPTACLE LOCATIONS. COMPUTER/SCANNER CABLES AND INSTALLATION SHALL BE BY OTHERS.
- (E15) DUCT SMOKE REMOTE TEST STATIONS SHALL BE LOCATED ADJACENT TO FIRE ALARM PANEL. COORDINATE LOCATIONS WITH FIRE ALARM SYSTEM INSTALLER PRIOR TO ROUGH-IN.
- (E16) INSTALL (HD/1) HAND DRYER IN RESTROOM. REFER TO ARCHITECTURAL INTERIOR ELEVATION FOR LOCATION AND MOUNTING HEIGHT.
- (E17) SWITCH EF-1 IN BREAK ROOM WITH A DIGITAL TIMER SWITCH SWITCH SET TO 30 MIN TIME DELAY. PROVIDE POWER TO EF-1 FROM LIGHTING CIRCUIT.
- (E18) PROVIDE 2" RIGID GALVANIZED STEEL CONDUIT FROM 2' BELOW ROOF DECK UP THROUGH ROOF. PROVIDE WEATHER HEAD AT CONDUIT END MOUNTED A MINIMUM OF 1' ABOVE ROOF LINE. FIELD VERIFY EXACT LOCATION OF PENETRATION PRIOR TO INSTALLATION. E.C. SHALL COORDINATE FLASHING REQUIREMENTS WITH ROOFING MANUFACTURER.
- (E19) REFER TO EMS DRAWINGS FOR ADDITIONAL INFORMATION ON EMS DEVICES MOUNTED IN POWERWALL.
- (E20) ELECTRICAL CONTRACTOR SHALL PROVIDE 17" DIAMETER ELECTRICAL CLEARANCE WARNING LABEL AS DISTRIBUTED BY EME/DCO/SKI/JFD1845. COORDINATE INSTALLATION LOCATION WITH ARCHITECTURAL DRAWINGS AND G.C.
- (E21) PROVIDE 500 KVA 480V//208V PAD MOUNTED STEP DOWN TRANSFORMER (T1). PROVIDE WITH 600A DISCONNECT MOUNTED ADJACENT TO TRANSFORMER. REFER TO ONE LINE DIAGRAM D1/E-401 FOR MORE INFORMATION.

Issued:		Date:
A	Client Review Set	02/15/19
B	Bid Set	03/08/19
C		
D		

Revisions:		Date:
1		
2		
3		
4		
5		
6		
7		
8		

DO NOT SCALE PLANS
 Copying, Printing, Software and other processes required to produce these prints can stretch or shrink the actual paper or layout. Therefore, scaling of this drawing may be inaccurate. Contact us consultants with any need for additional dimensions or clarifications.



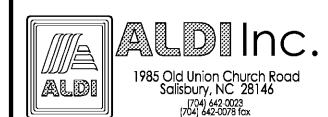
ms consultants, inc.
 engineers, architects, planners
 920 Main Campus Drive
 Suite 430
 Raleigh, NC 27606-5213
 (919)-772-5565
 fax: (919)-779-2308

DRAWN BY: JMM

REVIEWED BY: KFF

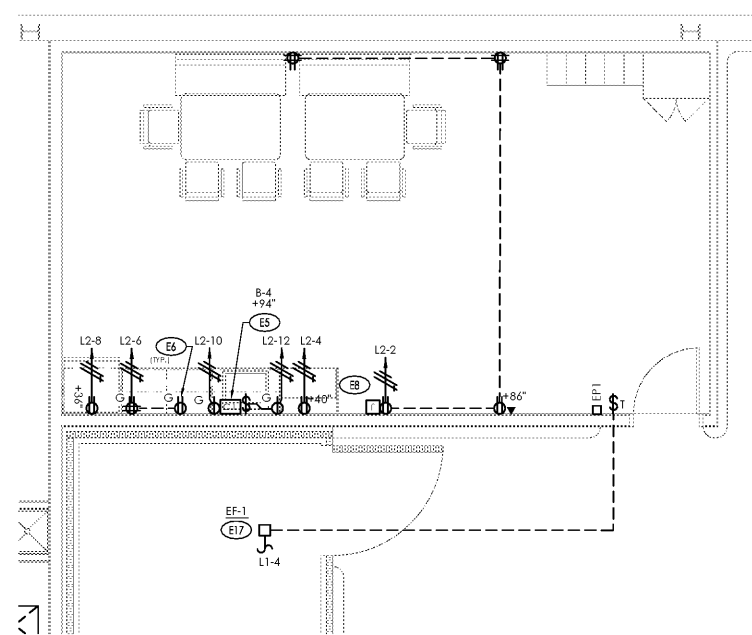
Seal

ENGINEER FIRM LICENSE #C-3239
 PROFESSIONAL OF RECORD:
 DANIEL E. DOWLER No. 042448
 EXP. DATE: 12/31/2019

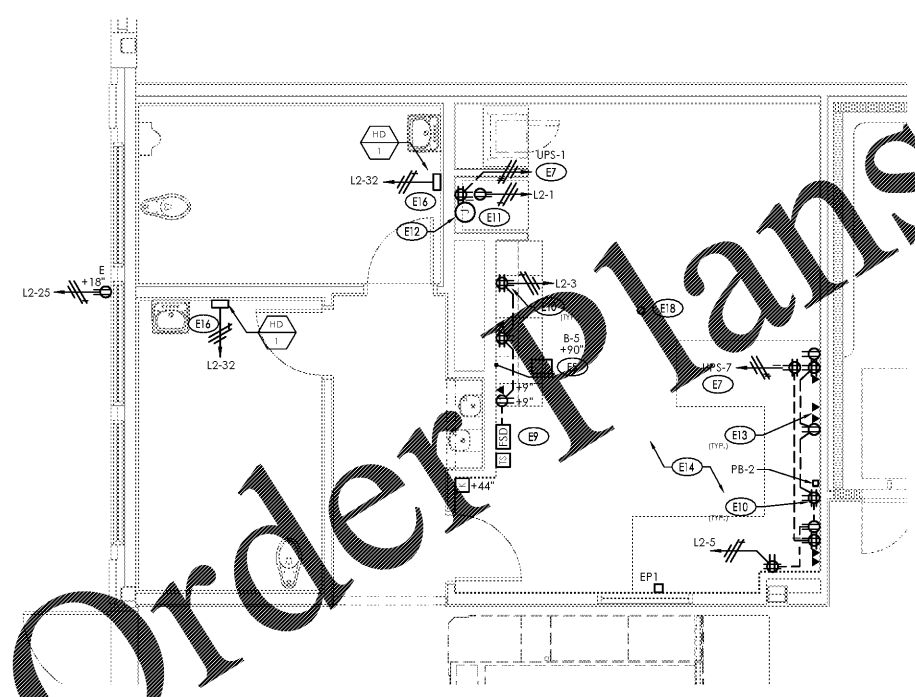


ALDI Inc. Store #: 59
 Cary, NC
 1315 Kildaire Farm Rd
 Cary, NC 27511
 Wake County
 Project Name & Location:

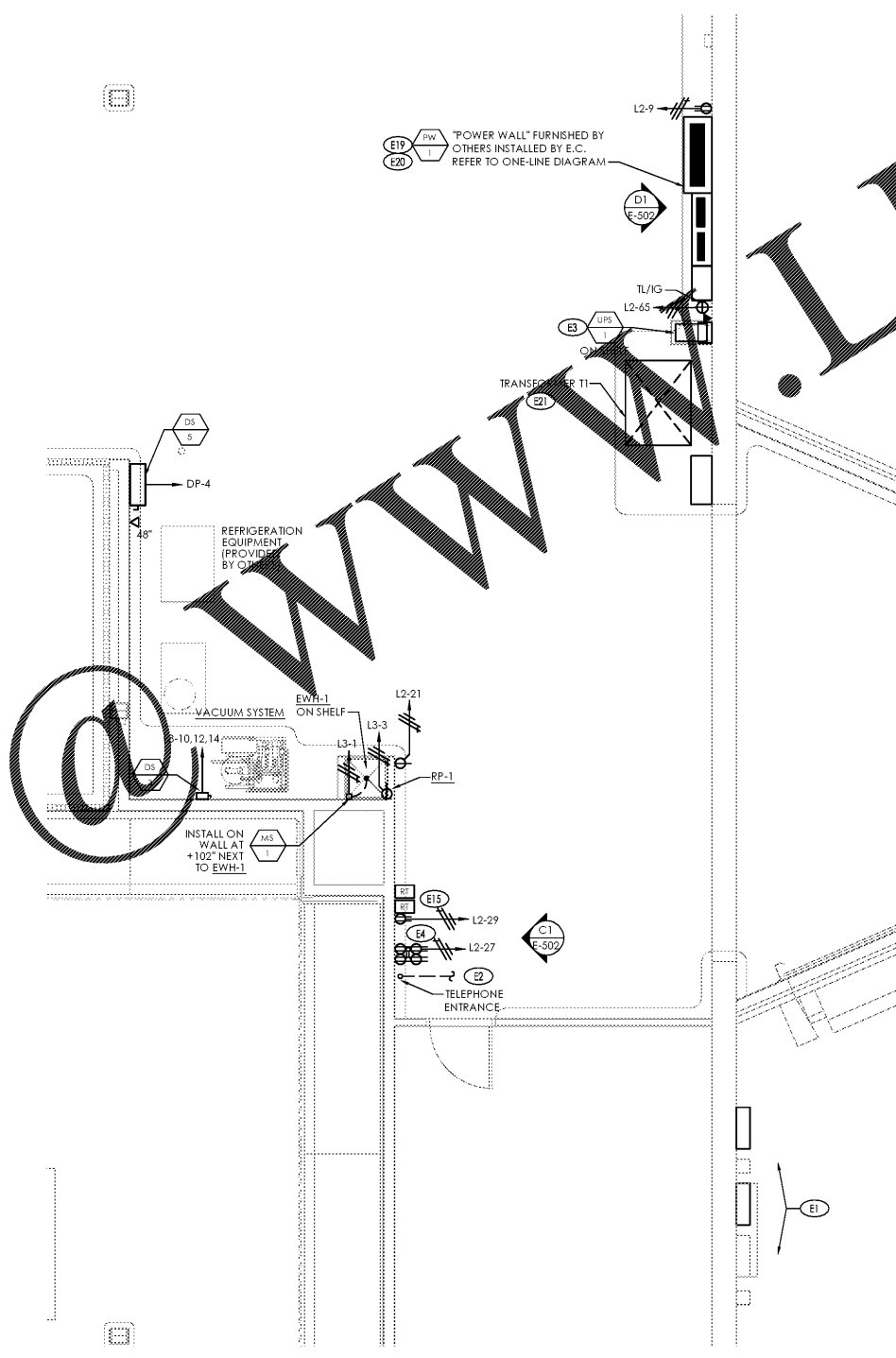
Enlarged Plan	
Drawing Name:	
Prototype Rls.	Project No.
	40452-25
Type: v7.1	
	E-301
Scale: As Noted	Drawing No.



D2 Enlarged Break Room Area
 SCALE: 1/4" = 1'-0"
 PLAN NORTH



D1 Enlarged Office Area
 SCALE: 1/4" = 1'-0"
 PLAN NORTH



B1 Enlarged Utility Area
 SCALE: 1/4" = 1'-0"
 PLAN NORTH

Plot Date: 3/7/2019

Order Plans

WWW.LDILLING.COM